



Art Storage Systems

Facilities for painting collections
in museums, galleries and depots





WELCOME...



Innovative and customer-oriented

Kern Studer Ltd. is specialized in development, construction and production of Art Storage Systems. As producer, we focus on cooperation with our partners, whom we supply all over the world.

The most of our products are developed by ourselves and are optimally adapted to the needs of the museum-market. Swiss ideas paired with national and international suppliers result in a mature and cost-effective product.

We are looking forward to your contact.

Kind regards
Thomas Kern, Urs Studer and Sigi Langer



References

- ▶ Kunstmuseum Basel
- ▶ Städel Museum Frankfurt
- ▶ KHM Wien
- ▶ Kunsthaus Zürich
- ▶ Zentrales Kunstdepot Freiburg
- ▶ Malmö Museer
- ▶ Musée des Beaux-Arts Lausanne
- ▶ Nationalmuseum Stockholm
- ▶ Mittelrhein-Museum Koblenz
- ▶ Sammlungs- und Forschungszentrum Hall in Tirol
- ▶ Kunstmuseum Solothurn
- ▶ ZKB Zürich
- ▶ Kunst-Service Wien
- ▶ Centre Pompidou Paris
- ▶ Musée Paris
- ▶ National Museum of Art Riga
- ▶ The Phoebus Foundation Antwerpen
- ▶ Zentraldepot Potsdam
- ▶ Sörmlands Museum Nyköping
- ▶ Museum für Kunst und Geschichte Fribourg
- ▶ Katoen Natie Art Antwerpen
- ▶ Lindau's Municipal Museum
- ▶ Kunstarchiv Beeskow
- ▶ Louvre Paris
- ▶ MO Museum Vilnius
- ▶ UniCredit Bank Wien
- ▶ Musée national de la Marine Paris
- ▶ Hasenkamp Kelsterbach
- ▶ Möbel-Transport AG Zürich
- ▶ Vanhaerents Art Collection Brussels

CONTENT

CEILING RUNNING SYSTEMS

- 4 Aluminium rails
- 6 Steel rails
- 8 Linear guides

FLOOR RUNNING SYSTEMS

- 10 Floor rails
- 12 Floor rollers
- 14 Art Gallery – Compact systems

ACCESSORIES

- 16 Closed systems
- 18 Front rollers, floor guides, stoppers
- 20 Fixings, specifications
- 22 Painting hooks, shelves, label holders

STATIC STORAGE

- 24 Fixed mesh wall
- 26 Shelf and pole racks

TRANSPORT AND WORKING EQUIPMENT

- 28 Worktables
- 30 Easel, painting trolley

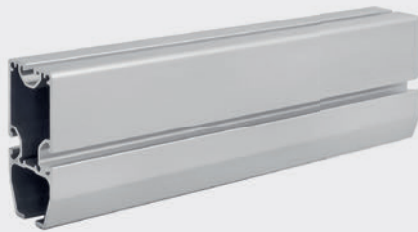
PARTITIONS

- 32 Metal partition walls
- 34 Mesh partition walls



Aluminium rails

Smooth running



Type DL-100: Aluminium rail with roller unit for load capacity up to 400 kg per pull out rack



Type DL-120: Aluminium rail with roller unit for load capacity up to 800 kg per pull out rack



Ceiling running system

We use two different sizes of aluminium rails to adapt the load capacity of the pull out racks. The specially manufactured roller units with steel ball bearings and high-loadable polyamide rollers are extremely smooth. A real alternative to the linear guided system.



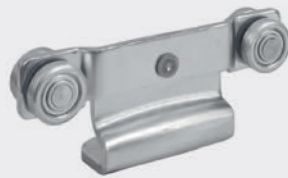
Ceiling running system

We use two different sizes of steel rails to adapt the load capacity of the pull out racks. The roller units with steel ball bearings and steel rollers are robust and high-loadable. An inexpensive alternative to aluminium rails.



Steel rails

Robust and proven



Type M-40: Steel rail with roller unit for load capacity up to 800 kg per pull out rack



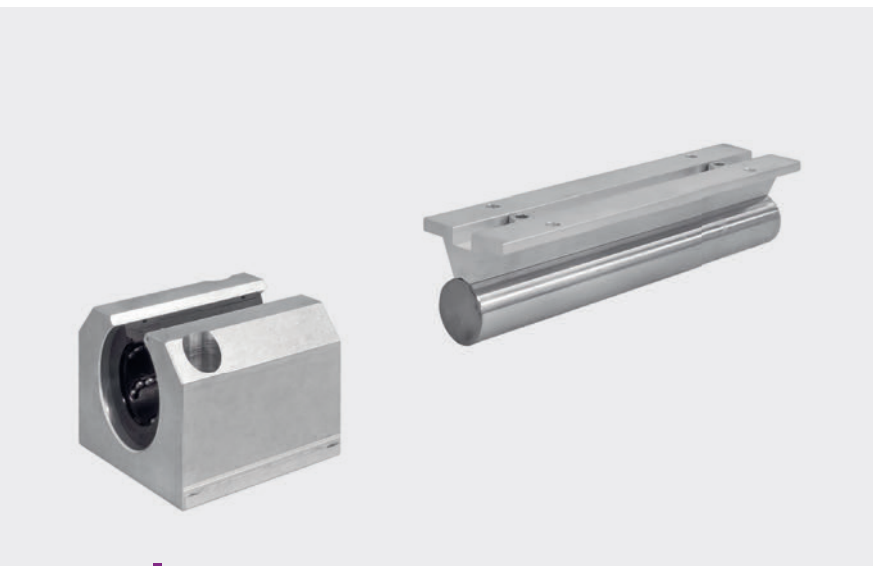
Type M-50: Steel rail with roller unit for load capacity up to 2000 kg per pull out rack

Linear guides

Vibration and shock-free



Type L-30: High-precision hardened and honed steel shafts



Linear guide with high-loadable ball bearings for load capacity up to 2000 kg



Ceiling running system

The linear guide with ball bearings runs completely vibration-free on the high-precision linear shafts and have a very low breakaway force. Linear guide systems are suitable for large and small pull out racks to carry high loads.



Floor running system

We provide this system as standard with wooden platform, alternatively with aluminium platform or with concreted floor rails. With the permanent guidance above and below we achieve a very precise straight run. The rollers with steel ball bearings have a high load capacity and run smoothly.

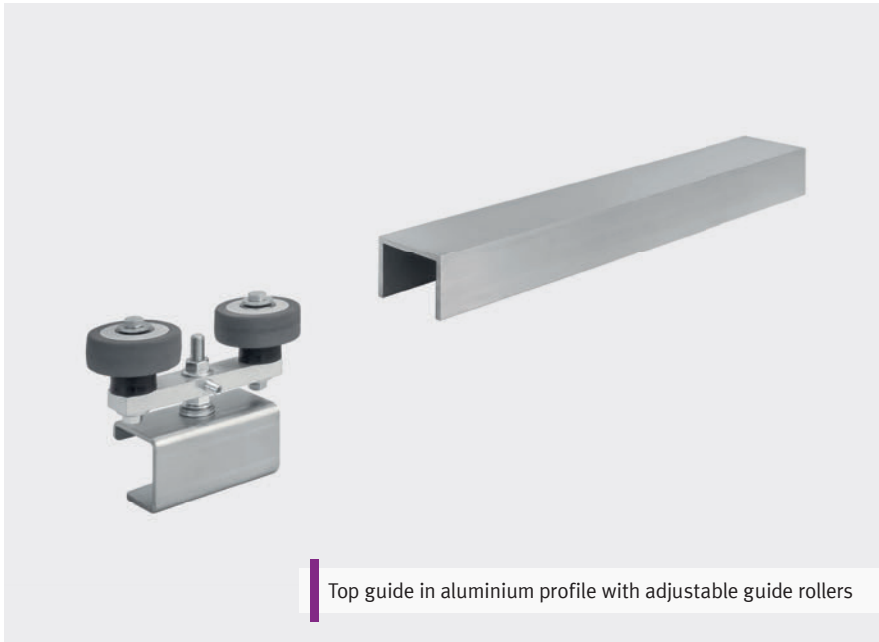


Floor rails

Precise running and permanently guided



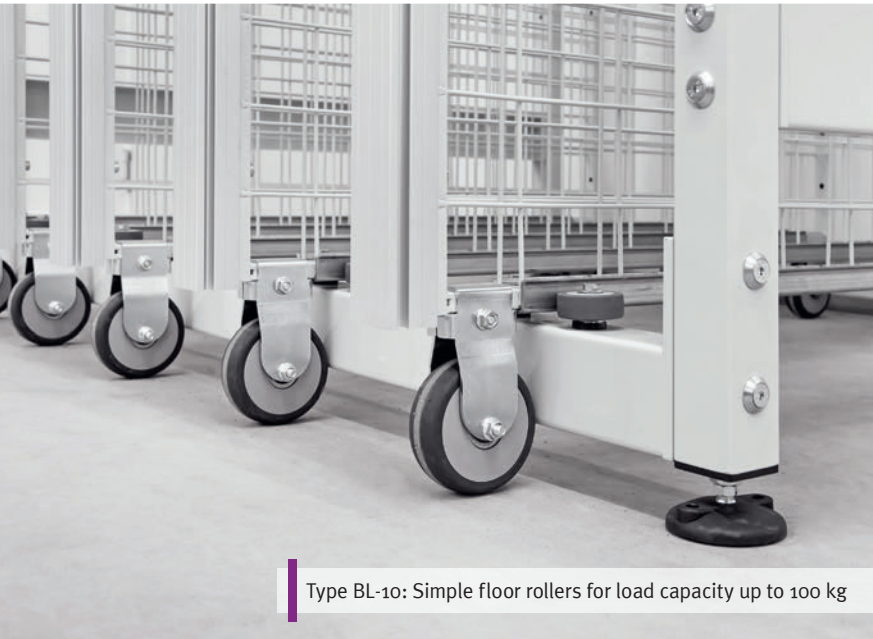
Type BL-30: Aluminium rails with rollers for load capacity up to 2000 kg



Top guide in aluminium profile with adjustable guide rollers

Floor rollers

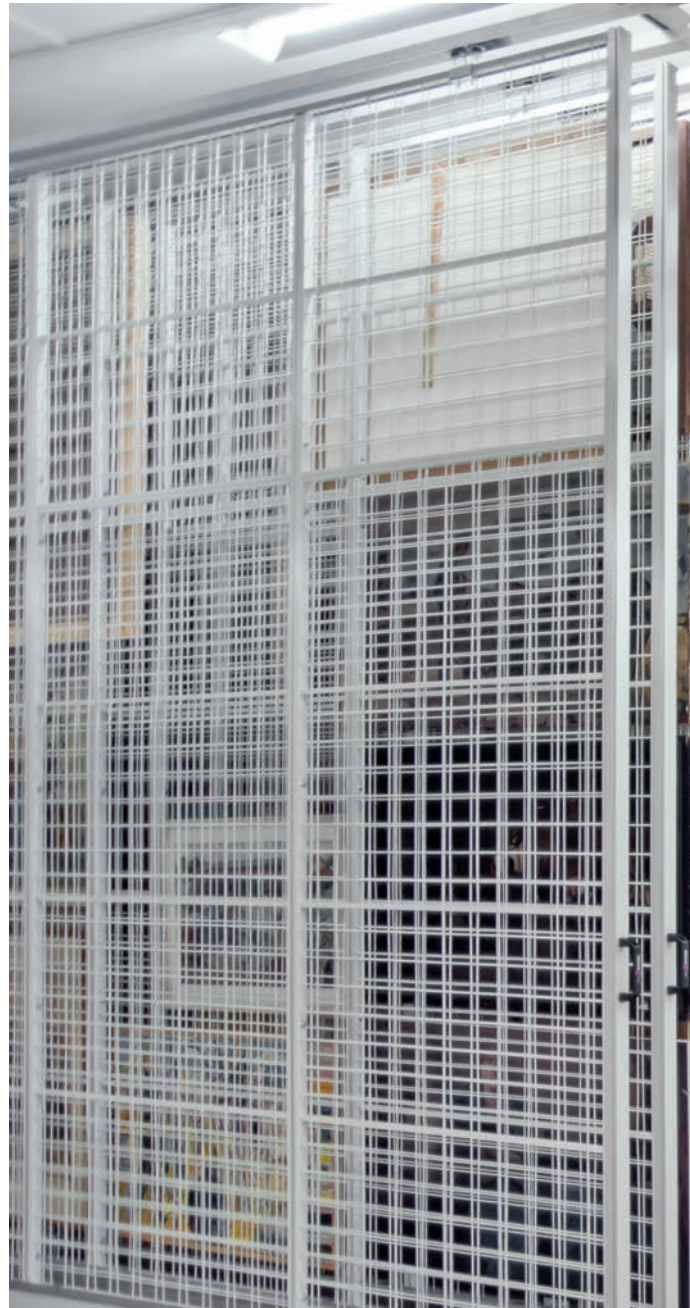
Simple and inexpensive



Type BL-10: Simple floor rollers for load capacity up to 100 kg



Top guide in aluminium profile with adjustable guide rollers



Floor running system

This system is suitable for small pull out racks with low loads. The floor should be as flat as possible. The rollers have a steel ball bearing and a rubber tread.



Floor running system

This system is suitable for galleries, restorers or artists with small space requirements. We offer different basic modules in width and depth. The system is modular and can be extended on both sides. The centre distance of the pull out racks is fixed at 300 mm.



Paintings: Art Pfeffer

Art Gallery

Compact and modular



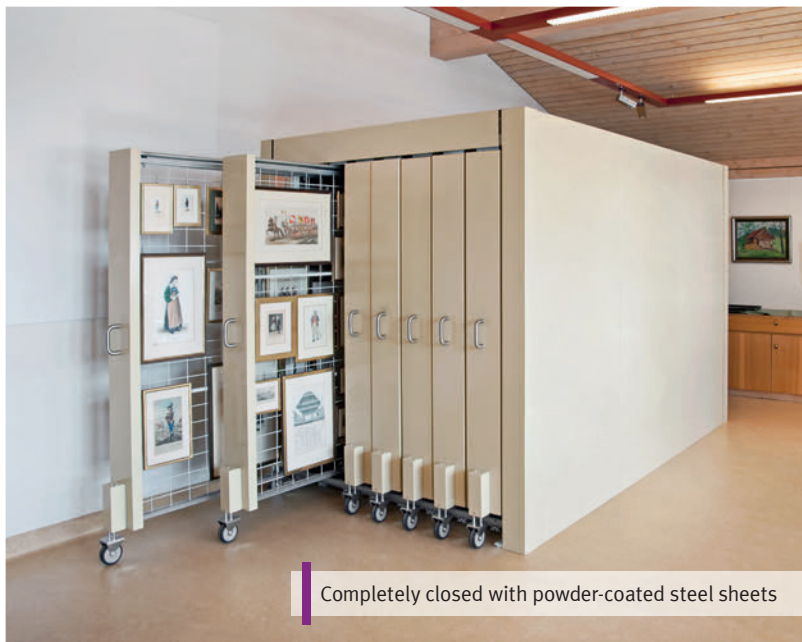
Basic modules with 3 up to 7 pull out racks, 3 depths 1300/2000/2400 mm



Add-on modules with the same dimensions as above

Closed systems

Front panels or completely closed



Completely closed with powder-coated steel sheets



Front panels made of wood, here in the example with maple wood



Closed systems

All our systems can be equipped closed and provide optimal privacy protection. You can choose between powder-coated steel sheets and various types of wood. For additional security, each pull out rack can be locked individually if required.



Accessories

We provide you several accessories for the safe handling of the pull out racks.

Fig. 1: Front rollers spring-loaded

Fig. 2: Floor guides

Fig. 3: Door stopper

Fig. 4: Wedge at the back for the 2nd guide

Fig. 5: Gas spring damper

Fig. 6: Rubber buffer with spring-travel

Fig. 7: Simple stopper

Fig. 8: Handle



Fig. 1

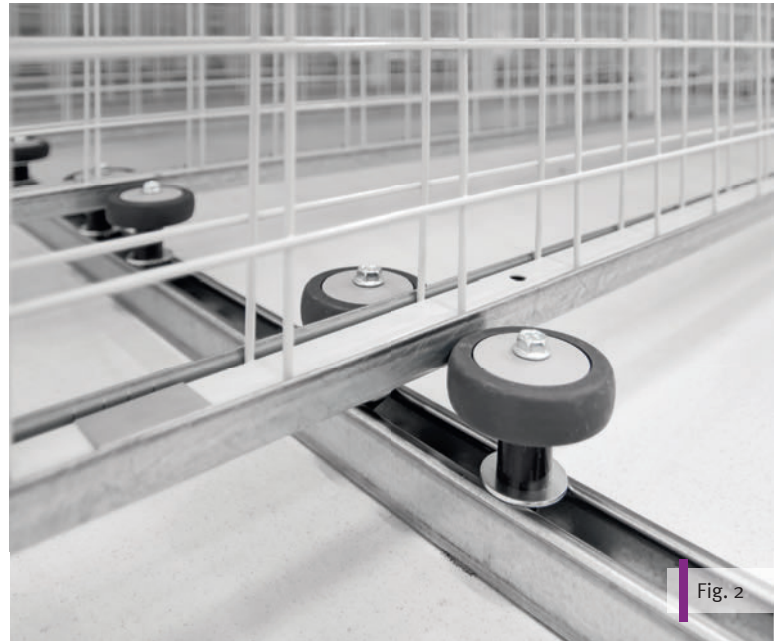


Fig. 2



Fig. 3



Fig. 4

Front rollers, floor guides, stoppers

Safe and easy handling



Fig. 5



Fig. 6



Fig. 7



Fig. 8

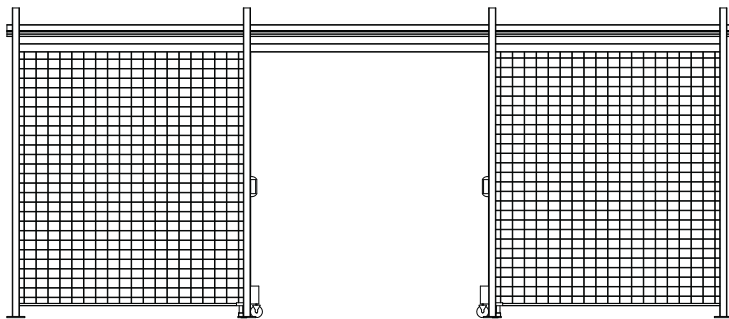
Mesh specifications

The mesh mats are welded on both sides of the surrounding steel frame and are powder-coated. The standard mesh size is 100 x 80 mm (w x h), the wire Ø is 4 mm. We have several standard elements in stock.

Heights: 2200, 2750, 3300, 3850, 4400 mm, widths: 700, 800, 900, 1000, 1100, 1200, 1300 mm

Fixing types, specifications

Floor and ceiling fixing

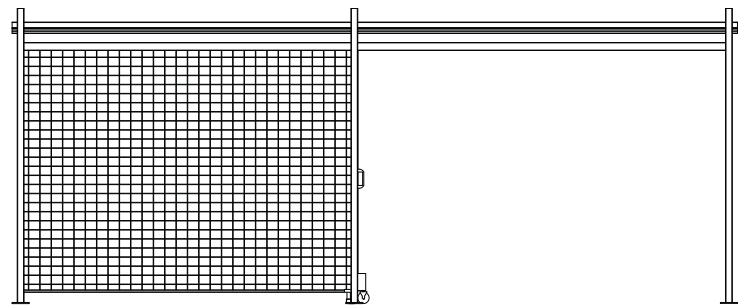


3-part system

The painting racks can be pulled out on both sides to the middle corridor. With this version, you can optimally use the space available. You have 33% more storage capacity with the same area compared to a 2-part system.

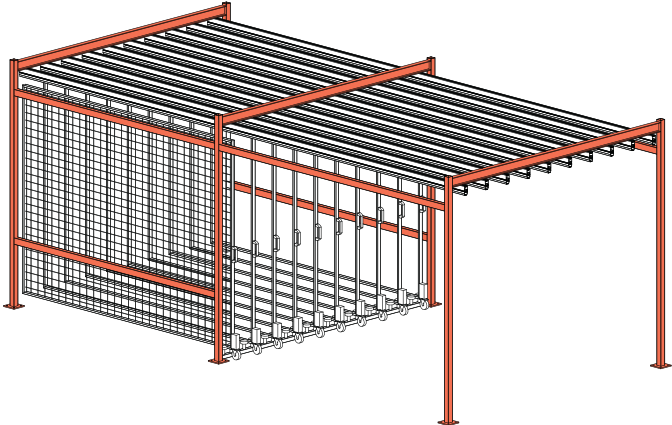
2-part system

The painting racks can be pulled out on one side to the sideways corridor. With this version you use half of the available space. This may be necessary if doors or windows are disturbing.

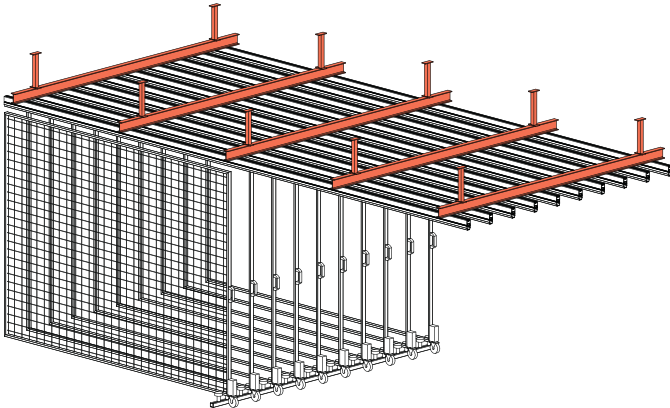


Fixing types

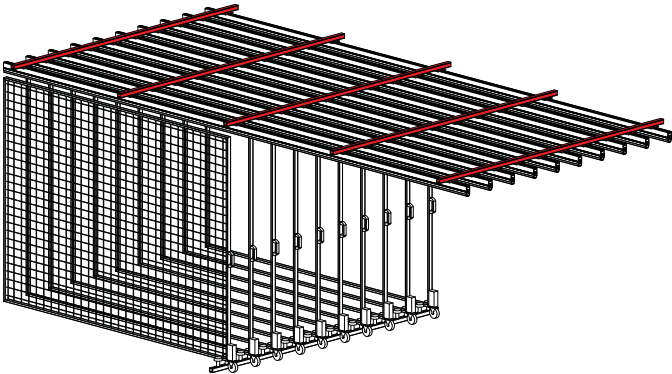
We provide you three different types of fixing. The freestanding version is required if a lot of technology such as ventilation, cable trays and lamps are provided on the ceiling. If the floor load is not sufficient, the system can be installed either directly on the ceiling or suspended from the ceiling.



Fixing to the floor with freestanding steel construction



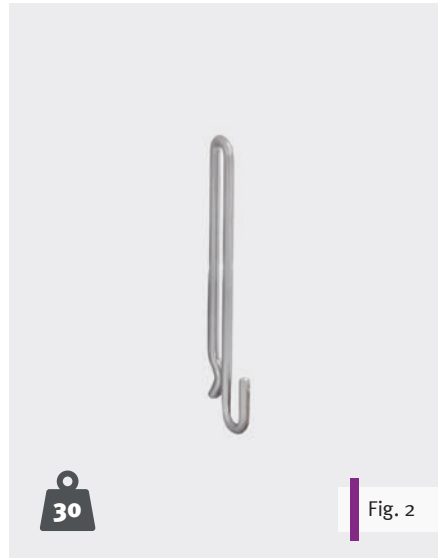
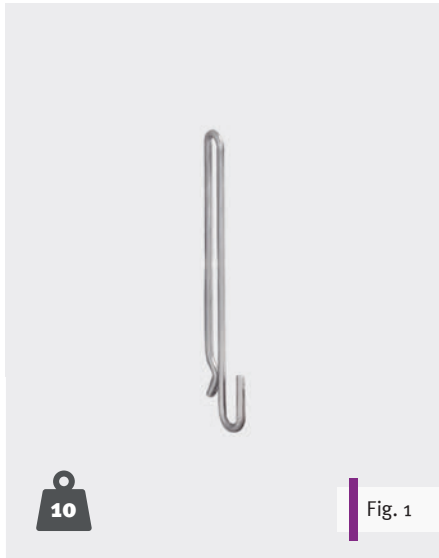
Fixing to the ceiling with suspended steel construction



Fixing directly to the ceiling

Static calculation

We prepare a static calculation for all units. Maximum load of the steel beams bending moments and area loads are shown. In this way we guarantee your safety and we can support you in the planning of a new building. With an existing building we can adapt to the situation.



Accessories

- Fig. 1: Painting hook INOX single, load capacity up to 10 kg, with snap-in for secure hold
- Fig. 2: Painting hook INOX single, load capacity up to 30 kg, with snap-in for secure hold
- Fig. 3: Painting hook INOX double, load capacity up to 50 kg, with snap-in for secure hold
- Fig. 4: Painting hook INOX type M, load capacity up to 70 kg, 2 clamps for secure hold
- Fig. 5: Painting hook INOX type L, load capacity up to 70 kg, 2 holes for fixing to the wire
- Fig. 6: Label holder, size A4, A5, A6, upright or across
- Fig. 7: Drop down safety accessories for shelves
- Fig. 8: Shelves to hang in, height adjustable
- Fig. 9: Shelves with drop down safety

Painting hooks, shelves, label holders

Safe attachment of paintings



Fixed mesh wall

This type of painting storage is suitable wherever free walls are available. The mesh panels can also be fixed directly on the existing steel structure of the Art Storage System.

Specifications: The mesh mats are welded on one side of the surrounding steel frame and are powder-coated. **The standard mesh size is 100 x 80 mm (w x h), the wire Ø is 4 mm.** We have several standard elements in stock.

Heights: 2200, 2750, 3300, 3850, 4400 mm, widths: 700, 800, 900, 1000, 1100, 1200, 1300 mm



Fixed mesh wall

Static painting storage



Fixed freestanding mesh panels

Load carrying with consoles on the floor and fixing with consoles to the ceiling.



Fixed mesh panels with pedestal

Pedestal as a collision protection and load carrying for the paintings.



Fixed mesh panels

Fixed directly to an existing wall using spacers.



Fixed mesh panels without pedestal

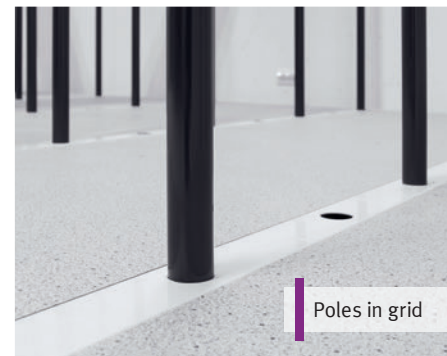
Load transfer to the floor via consoles and fixing to an existing wall using spacers.

Shelf and pole racks

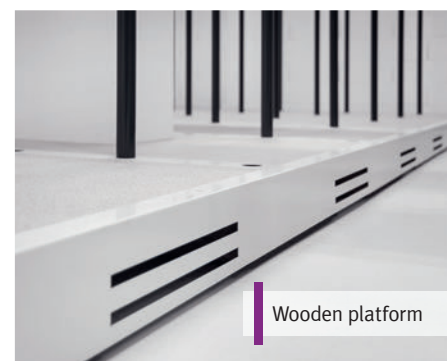
Static painting storage



Shelf rack with mixed subdivision



Poles in grid



Wooden platform



Shelf rack with poles



Fixing to the ceiling

Shelf and pole racks

The pole rack is suitable for storing large objects. The height is adapted to the space of the room and can be individually equipped with or without a wooden platform. For smaller objects we provide shelving racks with or without additional subdivision by poles.



Pole rack



Hand crank



Electric motor



Socket strip

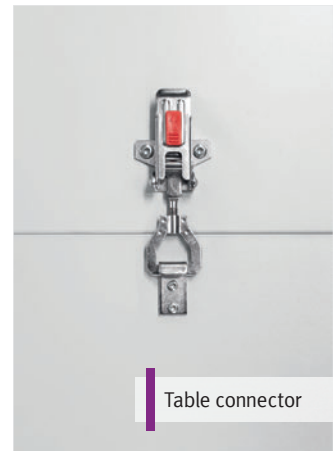


Table connector

Worktables

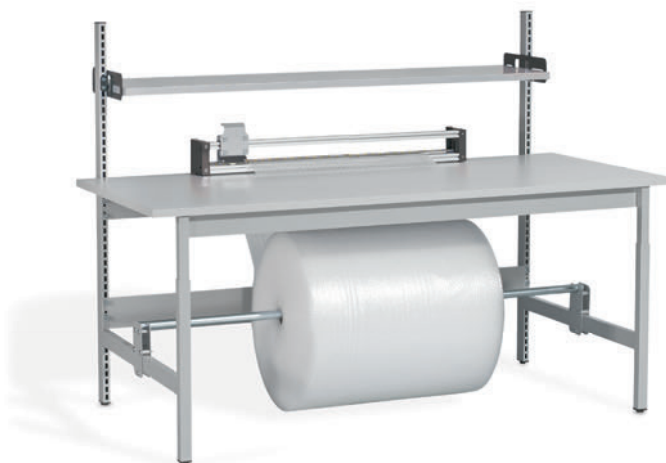
Modular and moveable

Worktables for the museums-market

Flexible table system for universal use in museums. Individual tables, mobile or stationary, can be used individually or, if required, combined to form large work surfaces.

Unrolling and cutting devices for foils or paper simplify the professional packing of exhibits. These are integrated in the table or are also available as individual cutting devices.

- ✓ Modular system with many options
- ✓ Modern look with uniform design
- ✓ Very flexible system, expandable at any time





Easel, painting trolley

Support during restoration and transport

Easel

This tool can simplify your work and assist you in restoring and photographing objects. The easel is electrically adjustable in height and can also be turned electrically forwards and backwards, so that the object is always quickly and easily in the right position or at the right working height at the push of a button.

Painting trolley

The very stable construction allows the safe transport of large and small paintings. The picture trolley is equipped with 4 castors, 2 of them have a stop function.

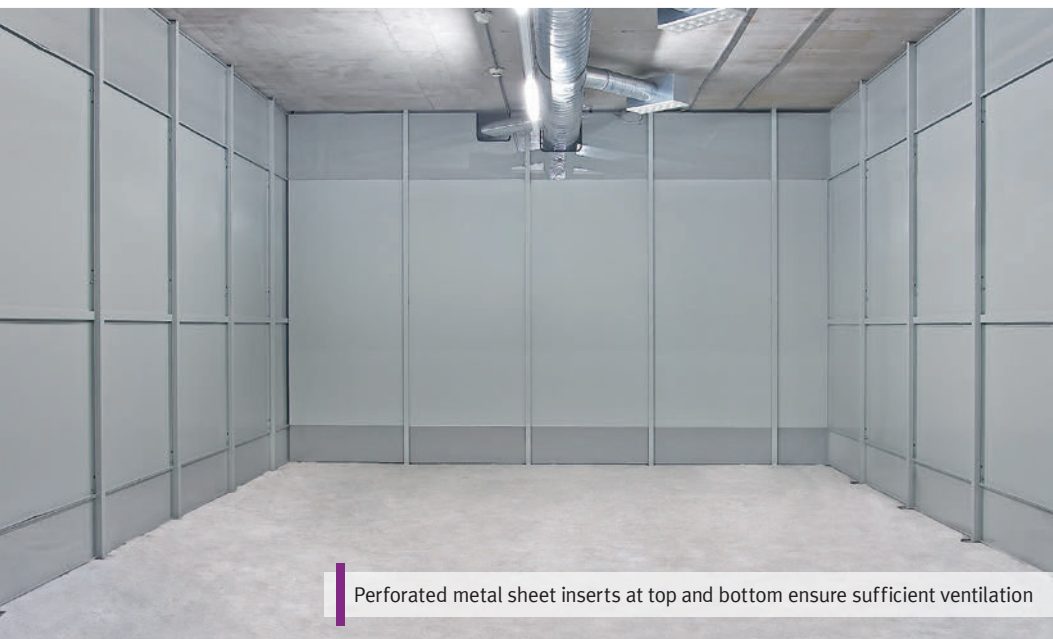


Metal partition walls

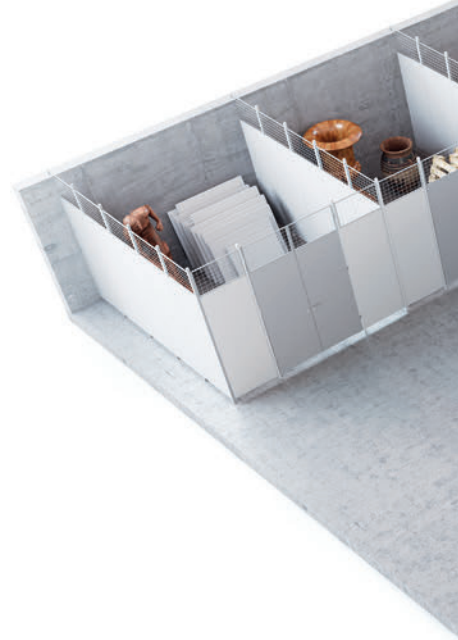
Storage boxes with privacy screen



Doors lockable by cylinder lock



Perforated metal sheet inserts at top and bottom ensure sufficient ventilation





Metal partition walls

Secure storage of art objects with the MultiGuard partition wall system, it provides good privacy protection for your collection. The sheet metal elements are made of steel. The surface is powder-coated.



Mesh partition walls

Secure storage of art objects with the MultiSafe partition wall system, so you have a good overview of your collection. The mesh panels are made of steel. The surface is powder-coated.

Mesh partition walls

Storage boxes with a clear view



Cylinder lock with lever handle knob set



Cylinder lock with handle set



Security locking system for controlled access



Kern Studer Ltd.

Weberrütistrasse 9
CH-8833 Samstagern

Telephone +41 (0) 44 783 22 22

www.art-store.com
info@art-store.com

Kern Studer GmbH

Gewerbering Süd 12
D-97359 Schwarzach am Main

Telephone +49 (0) 9324 97860-0

www.art-store.de
info@art-store.de

Your collection is stored safely in Art Storage Systems

Competitive worldwide!

