

# PRODUCT INTRODUCTION

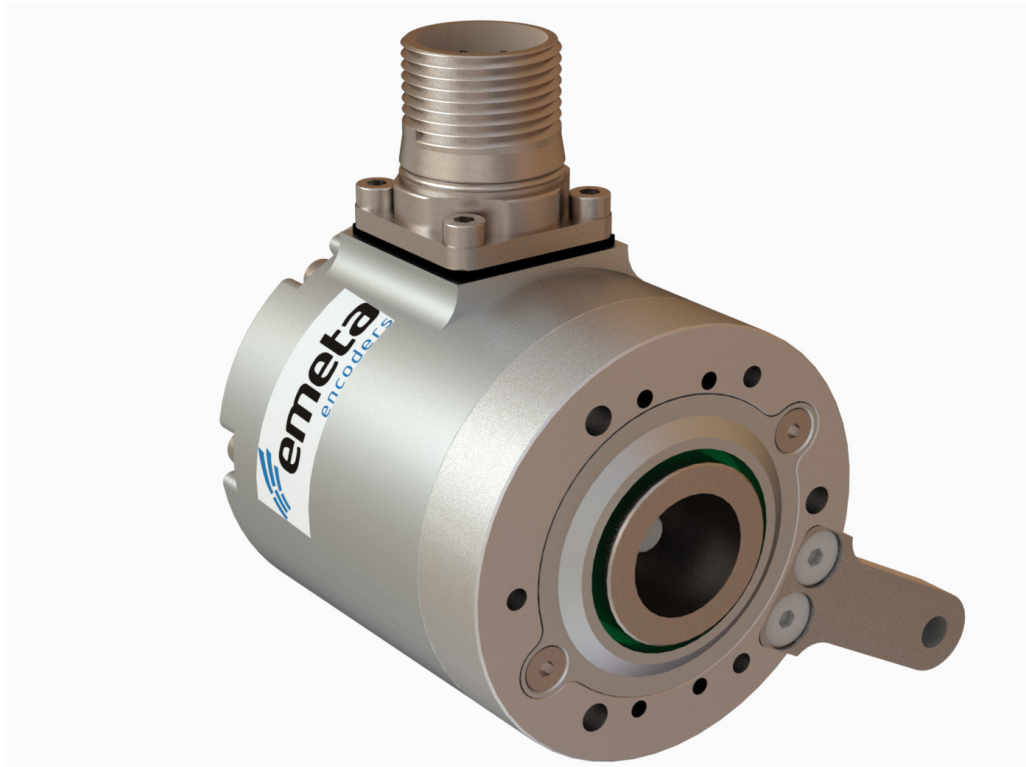


# MB480

## Heavy Duty Encoder

A Robust Incremental Encoder-Series for use in harsh and demanding environments.

## PRODUCT INTRODUCTION



Conical hollow shaft

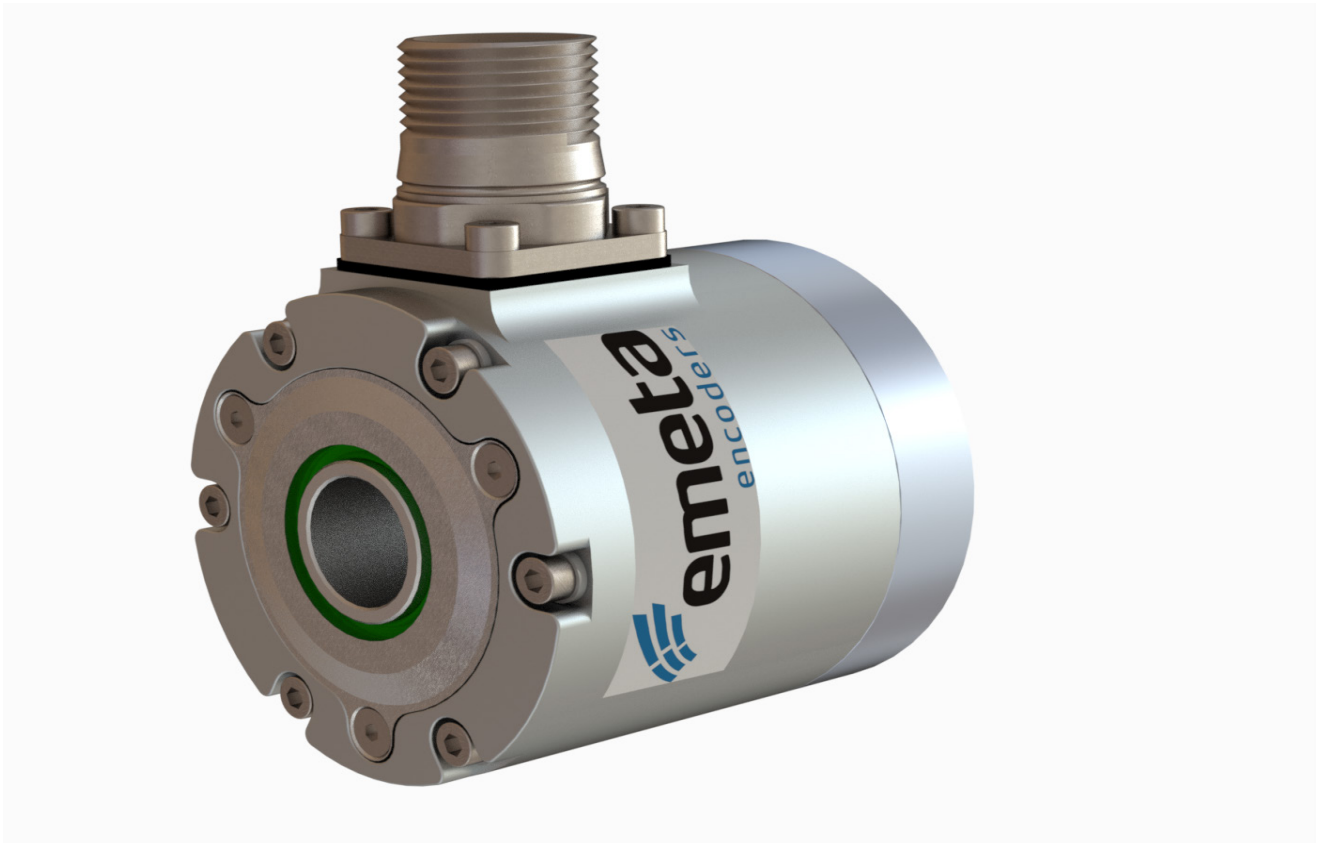
# MB480

## BUILT TO LAST

The MB480-Series from Emeta is designed for harsh and demanding environments. This series offers the versatility of various shaft options. From through hollow shaft to semi hollow shaft and others. A robust incremental encoder with flexible mounting options and smaller dimensions with its outer diameter of 58mm than regular heavy duty encoders.

A well rounded encoder suitable for applications such as cranes, motors, automation and other.

## PRODUCT INTRODUCTION



Through hollow shaft

# MB480

## SOME FEATURES

- \* Enlarged ceramic, non conductive, sturdy bearings
- \* Short circuit and reversed polarity proof
- \* Dust and waterproof IP67
- \* Standard 7-35Vdc or 5Vdc Power Supply

# PRODUCT INTRODUCTION



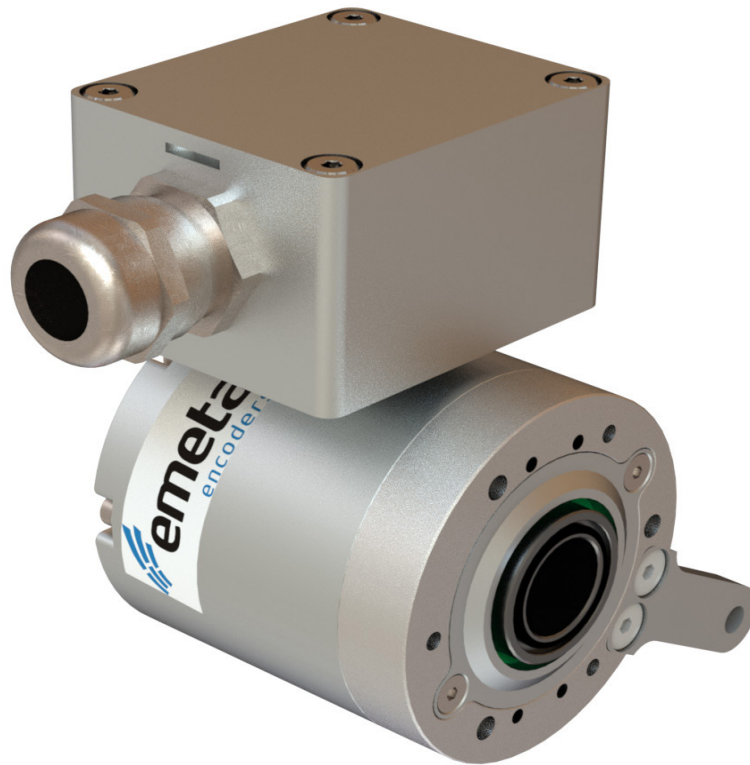
Solid shaft

# MB480

## SHAFT OPTIONS

- 10-17 mm semi hollow shaft
- 10-16 mm full trough hollow shaft
- 1:10 max 17 mm conical shaft
- 10-25 mm solid shaft

# PRODUCT INTRODUCTION



Semi hollow shaft with terminalbox

# MB480

## CONNECTION

Radial M23 Male Connector, CCW

Radial cable, 5m 8x0,25 TP/PUR with screen

Terminal box with cable gland for  $\varnothing 6$ - $\varnothing 12$ mm

# PRODUCT INTRODUCTION



## Customer satisfaction

We aim to please our customers and their needs. We offer our support regarding your Emeta products during the lifespan of the product. We at Emeta strive to have a close relationship with our customers and are happy to help with new projects. Most of our encoders can be customized upon request so if you have special requirements feel free to contact us!

Emeta Encoders

Skogsvägen 1  
645 34 Strängnäs  
SWEDEN

+46(0)152-33 11 90  
info@emetaencoders.com

