

## MG22 - SERIES



### BEARING LESS INCREMENTAL ENCODER Ø 22 MM

*Encoder with synchro flange*

- High ingress protection class IP68
- Non-contact measuring principle
- No wearing parts with long useable life
- Small dimensions & Flat design

Standard: 7-35Vdc Power Supply, 100kHz  
2 Square Wave Signals up to 1024 ppr

Options: Programmable marker pulse  
STATUS output with alarm function  
Extended warranty up to 48 months



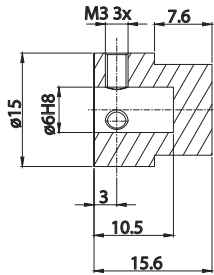
*Flexible and durable  
encoder for demanding  
applications*



Conforms to european EMC directive 89/336/EEC standards:  
EN61000-6-4 emission in industrial environments,  
EN61000-6-2 immunity in industrial environ

# INCREMENTAL ENCODER MODEL MG22

## SENSOR UNIT (ROTATING)



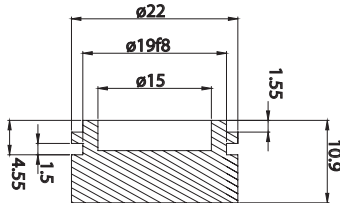
## MOUNTING TOLERANCES

dx	±0.25mm
dy	±0.25mm
dz	±0.5mm

## MOUNTING CLEARANCE

Z = 1 mm

## PICK-UP UNIT (STATIONARY)

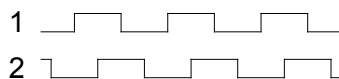
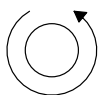


## ELECTRICAL SPECIFICATION, STANDARD

Power supply	Vcc 7–35 Vdc
Current consumption	Max 40 mA, without load
Output circuit	Line driver
Low level output volt	Max <0,5 V at 20 mA load and 20°C
High level output volt	Min >Vcc-2V at 20mA load and 20°C
Short circuit protected	Yes (thermal)
Polarity protected	Yes
Transient protected	Yes
Max load	70 mA

## OUTPUT SIGNALS, STANDARD

CCW rotation seen from shaft end



## SIGNAL ACCURACY

Resolution	1 to 1024 ppr
Reference pulse	90 el°
Channel separation	90 el°
Max frequency	100 kHz
Operating temperature	-40° till +100°C

## MECHANICAL SPECIFICATION

Housing	Aluminum, electrically conductive for increased interference protection
Encapsulation class	IP68
Max rpm	6000
Vibration	50g 20-2000 Hz
Chock	200g at 11 ms
Weight	approx: 30 g (without cable)

## CONNECTIONS

1	Axial cable, 1 m
1X	Axial cable, free cable length

## STATUS

Status output	Active high, indicate when magnet is in tolerance.
---------------	--

## FUNCTION

Model	MG22A	MG22B	MG22C
1	Green	Green	Green
2	Yellow	Yellow	Yellow
0	NC	Gray	NC
+V	Brown	Brown	Brown
0V	White	White	White
STATUS	NC	NC	Gray

NC = Not Connected

## ORDERING CODE

	MG22A	6	100	1	X
Model	_____				
Shaft ø6 mm	_____				
Pulse rate 1-1024	_____				
Connection	_____				
X= meter cable	_____				



Skogsvägen 1, SE-645 34 Strängnäs, Sweden  
 Tel: +46 152 33 11 90. Fax: +46 152 33 11 91  
 E-mail: info@emeta.se  
 www.emetaencoders.com