

A1D – A1D Update guide

V0.0.5

This document is a guide for updating the firmware on A1D.

Equipment needed:

1. Windows PC
2. USB-C cable

1. Connect the A1D to a Windows PC

Connect the A1D to a Windows PC, via a USB-C cable:

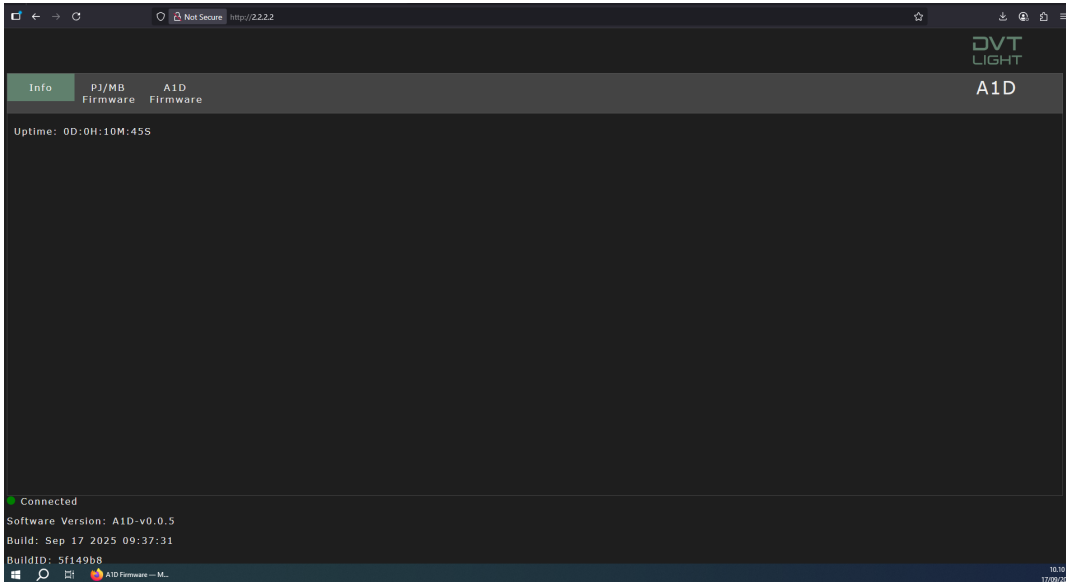


2. Open Browser on your PC

Open a preferred browser on your computer. A1D works with Chrome, Firefox and Edge.

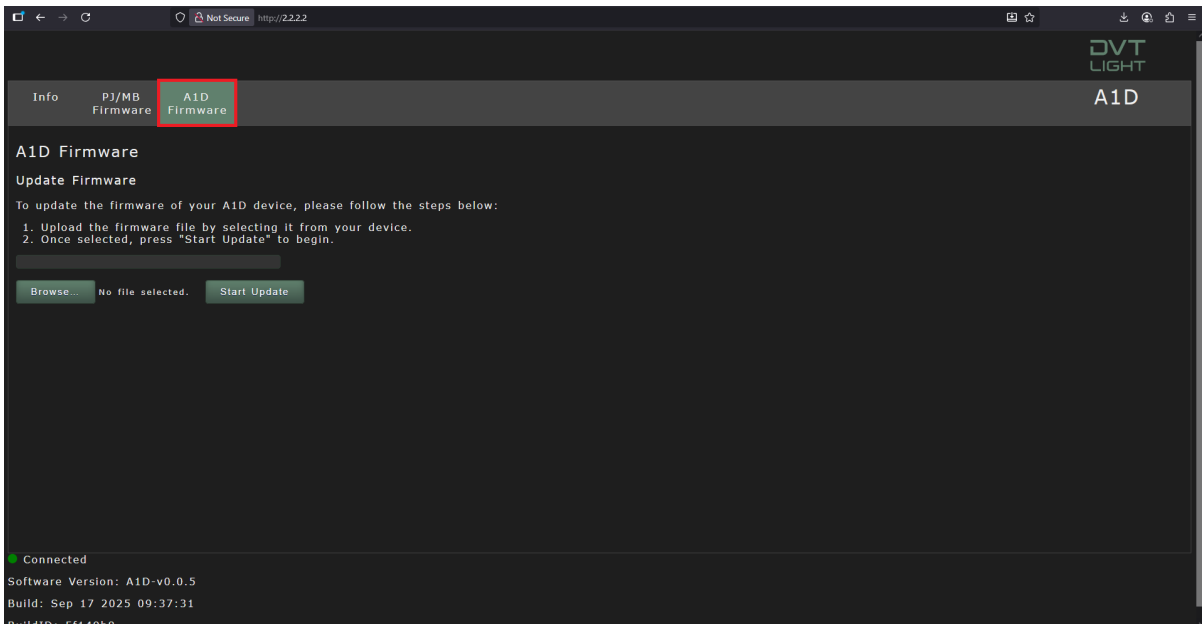
3. Go to 2.2.2.2 in your browser

Navigate to the URL-bar and type **2.2.2.2** and press **ENTER**. You will be presented with a website like this:



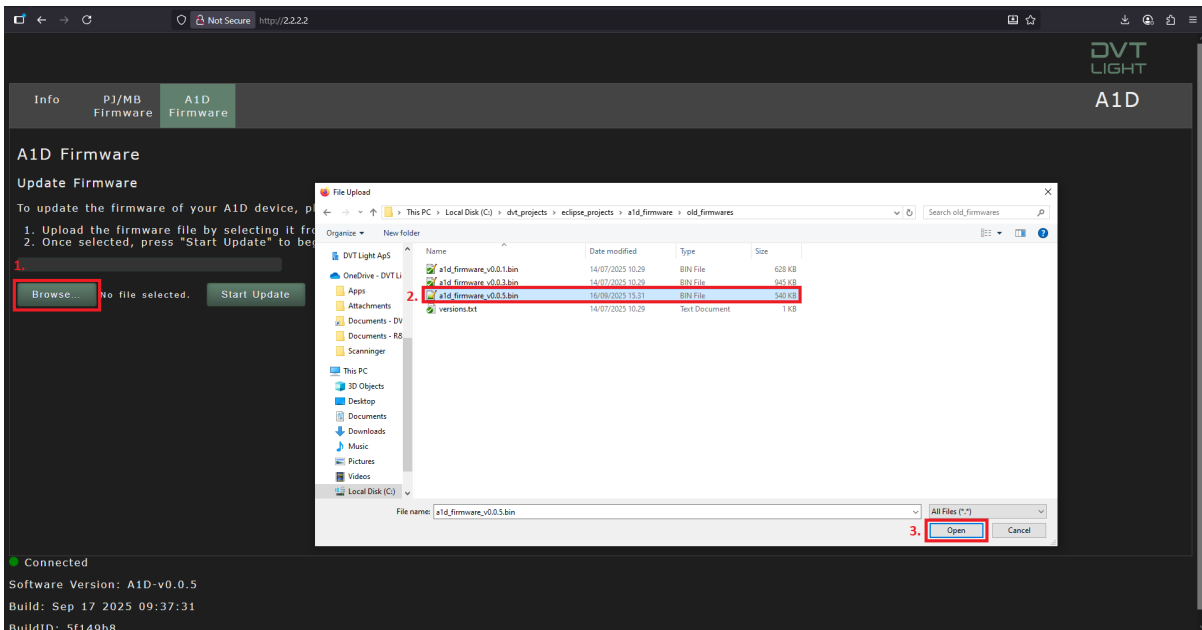
4. Navigate to A1D Firmware

Now press the A1D Firmware tab, as shown below:



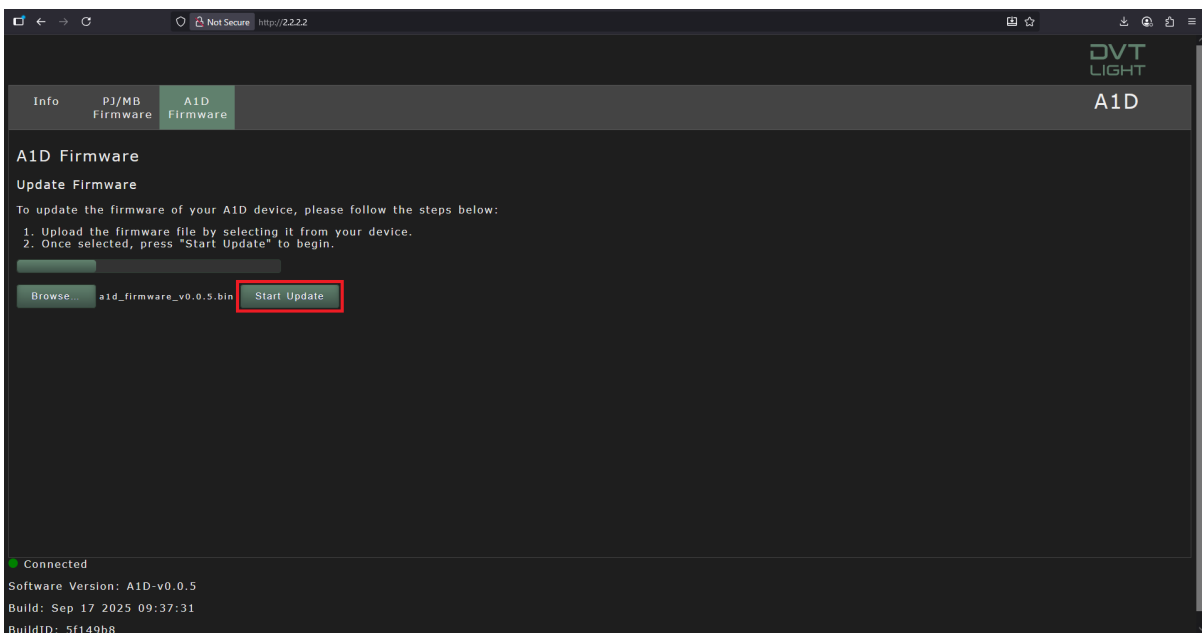
5. Press the browse button and navigate to the new firmware file

Press the **browse** button, select the new **firmware file**, and then press **Open**.



6. Push upload button to start the update process

Push **Start Update** button to start the update process and wait until it has reached 100% on the process bar.



7. Reloading webpage

After the A1D has been successfully updated it will reboot itself and therefore you need to **refresh** the webpage. It is also indicated by the “Disconnected” status at the bottom: