

Light efficiency:

**35 Lumen/Watt**

Light quality:

**CRI: 68,5**

Color temperature:

**4177 K**

**Output: 10946 lm**

**Peak: 324990 cd**

**Power: 311,1 W**

**PF: 0,95**

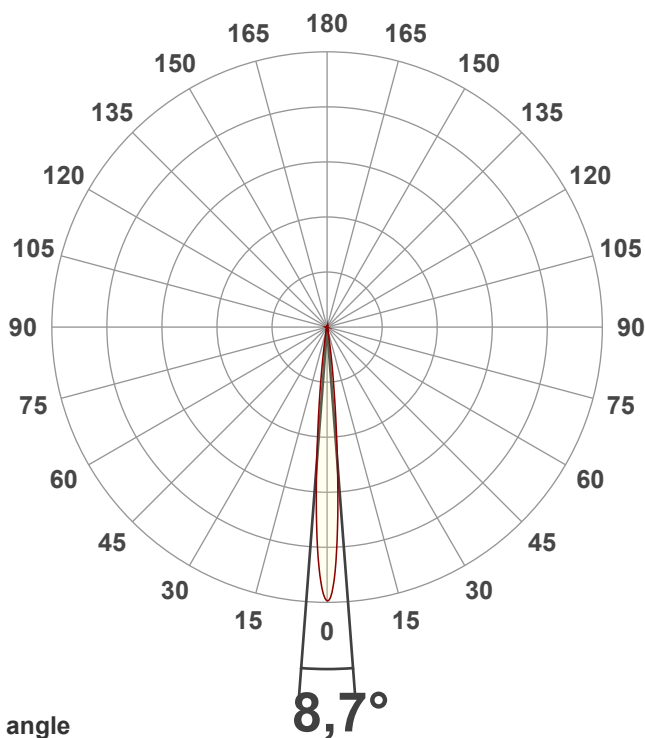


Product name:

**PJ2\_5\_RGB\_SPOT\_CD**

Date and time:

**28/11/2024 12.38.10**



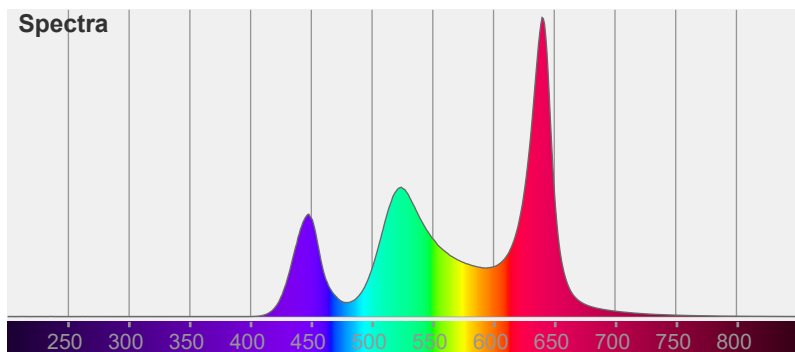
Beam angle

Color



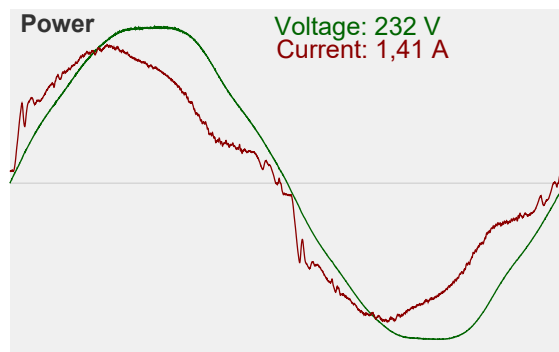
CIE1931  
x: 0,375  
y: 0,381

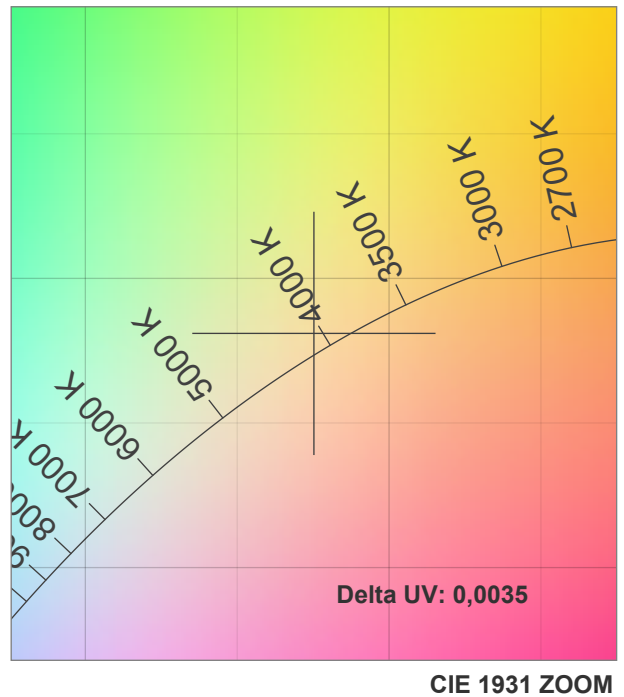
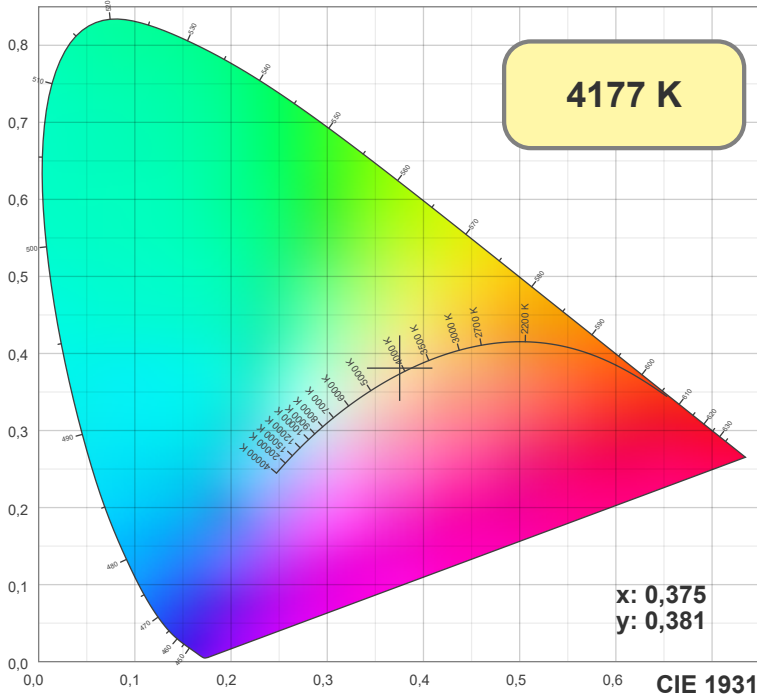
Spectra



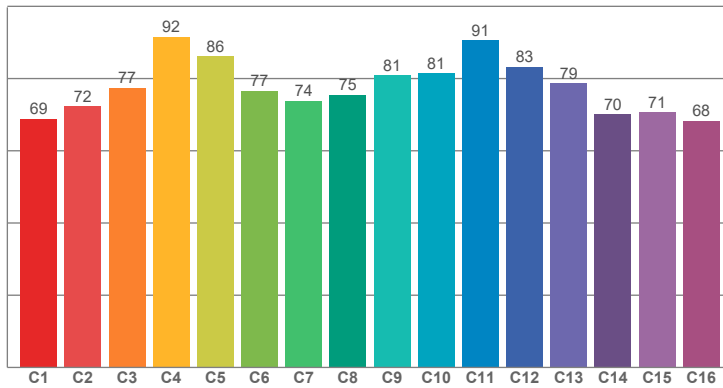
Power

Voltage: 232 V  
Current: 1,41 A

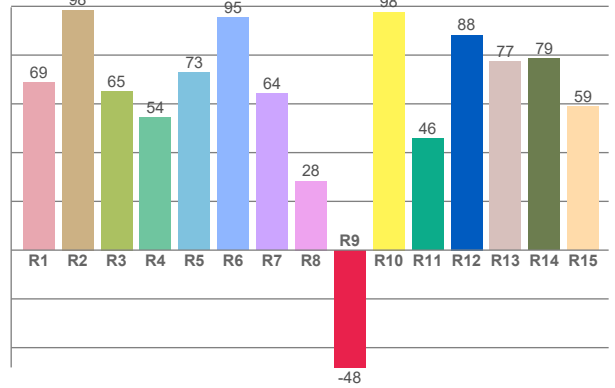




TM30: 79,0



CRI: 68,5 (R1-R8)



CRI R values, only R1-R8 are used to calculate final CRI value

R1	R2	R3	R4	R5	R6	R7	R8	R9	R10	R11	R12	R13	R14	R15
68,68	98,47	65,23	54,38	72,97	95,49	64,31	28,38	-48,12	97,72	45,82	88,28	77,48	78,51	58,97

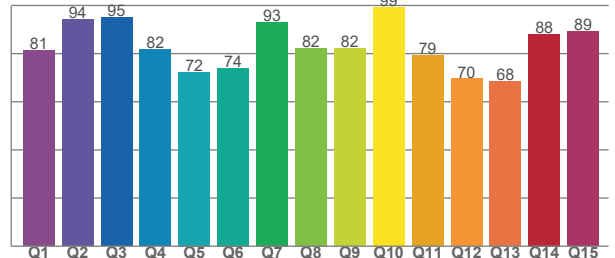
TM30 C values, 16 binned values out of total of 99 C values

C1	C2	C3	C4	C5	C6	C7	C8	C9	C10	C11	C12	C13	C14	C15	C16
68,89	72,36	77,46	91,53	86,18	76,61	73,81	75,48	80,89	81,42	90,62	83,19	78,74	70,05	70,59	68,30

CQS Q values

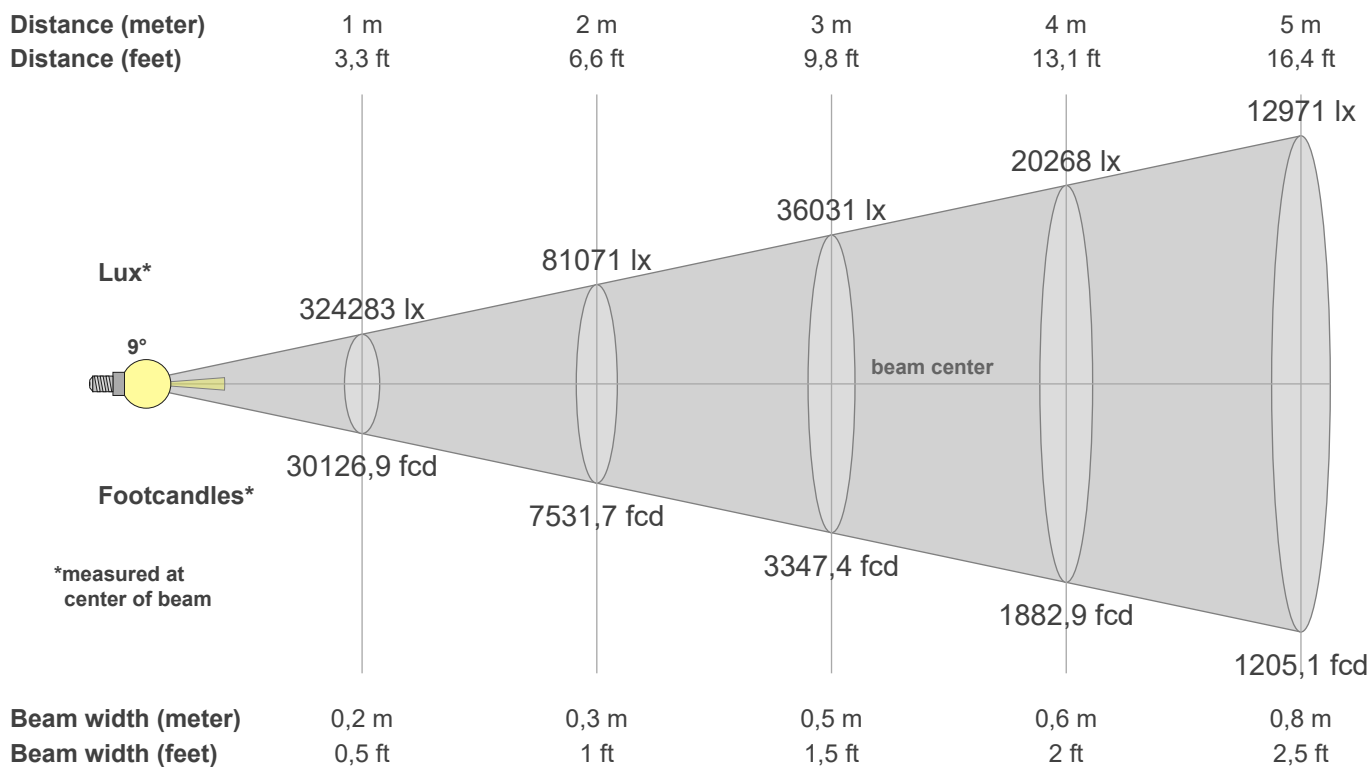
Q1	Q2	Q3	Q4	Q5	Q6	Q7	Q8	Q9	Q10	Q11	Q12	Q13	Q14	Q15
81,38	94,10	95,11	81,67	72,37	74,02	93,09	82,31	82,06	99,30	79,30	69,55	68,43	88,21	89,15

CQS: 80,9



## Color parameters

CCT	CRI	CRI R9	TM30 Rf	TM30 Rg	CQS	x	y	u	v	Duv
4177 K	68,5	-48,1	79,0	117,1	80,9	0,4	0,4	0,2	0,3	0,0035



**Intensities in 0° c-plane**

0°	1°	2°	3°	4°	5°	6°	7°	8°	9°	10°	11°	12°	13°	14°	15°	16°	17°	18°	19°
324K	315K	285K	237K	181K	129K	86K	56K	34K	20K	12K	8K	6K	5K	4K	4K	4K	3K	3K	2K
100%	97%	88%	73%	56%	40%	27%	17%	10%	6%	4%	3%	2%	2%	1%	1%	1%	1%	1%	1%

**Intensities in 0° c-plane**

0°	1°	2°	3°	4°	5°	6°	7°	8°	9°	10°	11°	12°	13°	14°	15°	16°	17°	18°	19°
324K	315K	285K	237K	181K	129K	86K	56K	34K	20K	12K	8K	6K	5K	4K	4K	4K	3K	3K	2K
100%	97%	88%	73%	56%	40%	27%	17%	10%	6%	4%	3%	2%	2%	1%	1%	1%	1%	1%	1%

**Intensities in 180° c-plane**

0°	1°	2°	3°	4°	5°	6°	7°	8°	9°	10°	11°	12°	13°	14°	15°	16°	17°	18°	19°
324K	312K	283K	237K	182K	129K	87K	56K	34K	21K	14K	9K	7K	6K	5K	4K	4K	3K	3K	2K
100%	96%	87%	73%	56%	40%	27%	17%	11%	7%	4%	3%	2%	2%	1%	1%	1%	1%	1%	1%

**Intensities in 180° c-plane**

0°	1°	2°	3°	4°	5°	6°	7°	8°	9°	10°	11°	12°	13°	14°	15°	16°	17°	18°	19°
324K	312K	283K	237K	182K	129K	87K	56K	34K	21K	14K	9K	7K	6K	5K	4K	4K	3K	3K	2K
100%	96%	87%	73%	56%	40%	27%	17%	11%	7%	4%	3%	2%	2%	1%	1%	1%	1%	1%	1%

Beam angle 50%	Field angle 10%	Cutoff angle 2,5%	Intensity ratio in 120° cone	Intensity ratio in 90° cone
8,7°	16,2°	22,5°	98,2%	96,5%