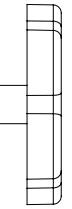
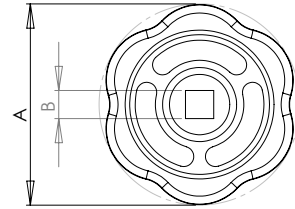
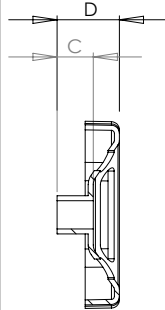


WOLLENBERG

PATENT HANDWHEELS



TYPE	DIAMETER Ø MM	HEIGHT WITHOUT HUB MM	NO. OF SPOKES
P 50 Ø / S	50	6	3
P 60 Ø / S	60	7,5	3
P 70 Ø / S	70	9	3
P 80 Ø / S	80	9	3
P 90 Ø / S	90	12	3
P 100 Ø / S	100	11	4
P 120 Ø / S	120	16,5	4
P 140 Ø / S	140	16,5	4
P 160 Ø / S	160	17	4
P 180 Ø / S	180	20	4

Surface treatment: Ferro-phosphated and electrostatically powder coated with a polyester based coating.

Standard colors: Black RAL No. 9005 and Red RAL No. 3000.

By larger quantities, special requirements for colors may be met.