



DUPLIX OFFICE

SUITE

OVERVIEW



ABOUT THE PROPERTY

Located in Prague 3 near the VŠE university and 50 metres away from Husinecká tram stop and in walking distance of main train station, this Office Suite situated on the 3rd and 4th floor of this pop-art refurbished building complex with the elevator. 3rd floor consists of 4 rooms, large entrance lobby, 2 bath rooms and a kitchen with balcony, ideal for back office and administration.

Top floor Office Suite consists of large entrance lobby, 4 rooms including a terrace, spacious kitchen and two bathrooms. Ideal for client reception area. Parquet flooring throughout. Currently unrefurbished awaiting new tenant. The charges include all common building charges and own consumption of electricity, gas and heating.

| Palac Mariagrazia | |
|--------------------------|--|
| | Office Suite n.3 & n.4 Third and fourth floor |
| Floor space | 214 m ² |
| Rent / Month | 62.000,-CZK monthly |
| Charges / Month | 16.000,-CZK monthly |
| Minimum lease | 36months |
| Deposit | 3 months |

CONTACT

+ 420 775 555 090
 rent@czechparking.com

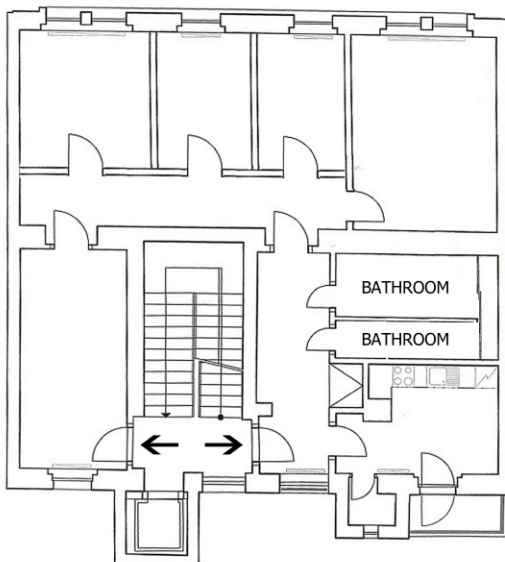
www.czechparking.com
 Czech Parking Management - CPM s.r.o.

Husinecká - Prague 3



FLOOR PLANS

HUSINECKÁ 5 - 3rd FLOOR



HUSINECKÁ 5 - 4th FLOOR

