



The Custom  
Clothing Experts

[www.customsportsclothing.co.uk](http://www.customsportsclothing.co.uk)

# CUSTOM HEADWEAR

We Create Custom Garments for ALL Sports And More..

Get In Touch For Free Custom Clothing Design Services or Advice

Contacts: Unit 6, Trevenwyth Rural Workshops  
St. Ives Road Lelant St. Ives Cornwall TR26 3EU

Mon - Fri | 10 AM – 5:30 PM PST  
[info@customsportsclothing.co.uk](mailto:info@customsportsclothing.co.uk)  
Call US: 01736 697237



---

We provide one-stop custom service, can handle every aspect of custom designs, from ordering to delivery by the Meidiney professional team. Main products: Baseball hats, Snapback hats, Trucker hats, Sports hats, Tactical hats, LED hats, Golf hats, Bucket hats, Visors, Beanies etc.

We always put customers firstly, provide customers with various design solutions and convenient services to meet customer expectations all the time.

QUALITY FIRST, EFFICIENCY FIRST, SERVICE FIRST, that is Meidiney Team.

We're available 24/7 - Welcome to reach out or email us at anytime.

# Content

1. Our Team
2. About Us
3. Our Services & Certificate
4. Hats Catalogue
  - Trucker Hats
  - Baseball Hats
  - Snapback Hats
  - Camp Hats
  - Perforated Hats
  - Bucket Hats
  - Visor Hats
  - Beanies
  - Tactical Hats
  - Straw Hats
5. Description of logo designs

# Our Services

1) MOQ: 50pcs

2) Production time: -

Sample time: 5-7 Days -

Delivery Time: 20-35 Days

- Certificate: BSCI

3) Service: OEM ODM CUSTOM

We provide professional one-stop service for customers, the custom process as followings:

1. Customer services confirm all the details with clients;
2. Designers provide design support and make the mockup;
3. Workers complete the production with high quality;
4. Photographers take HD pictures after production finished;
5. Three times inspection before delivery to ensure the quality.

The free pre-production samples will be made for customers to check before bulk production, to ensure the order meet your needs.

# FW 005 5 PANEL TRUCKER HATS

SIZE:51-64cm CUSTOM

FABRIC:SUEDE& POLYESTER MESH

BRIM:F-023 CURVED 7CM

New fantastic curved brim trucker hats,front panel is with puff embroidery logo.It's made of special suede fabric.No matter special fabric or unique color combination,we can do it for you.



## DF WM SUEDE



## BACK COLOR SWATCHES:CCJM



# 9041 5 PANEL TRUCKER HATS

**SIZE:**51-64cm CUSTOM

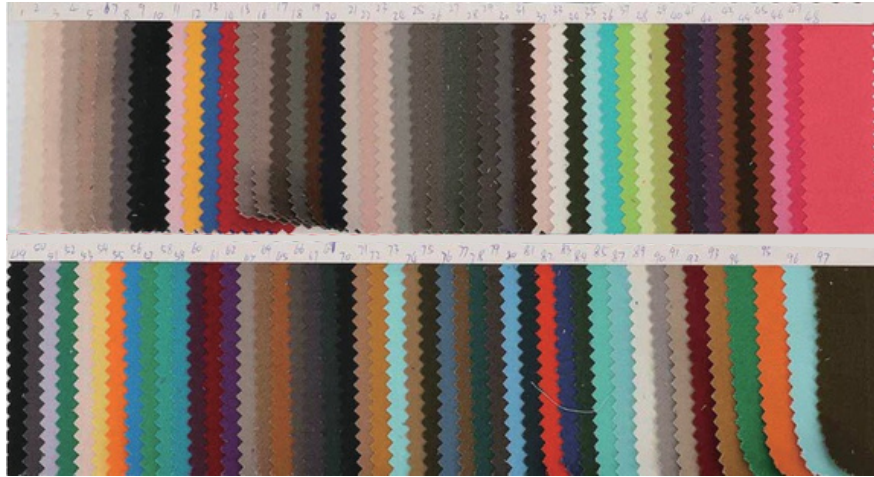
**FABRIC:**COTTON& POLYESTERMESH

**BRIM:**F-023 CURVED 7CM

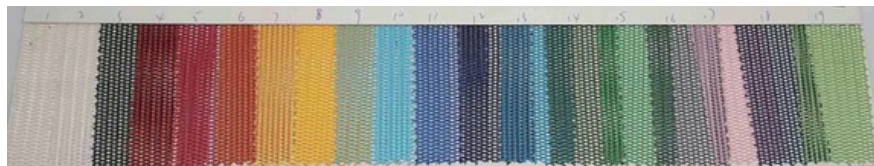
High profile fashion side stripes trucker hat has special checked stitching on the front panel, it's with a gorgeous embossed logo leather patch and left panel is with a flat embroidery.



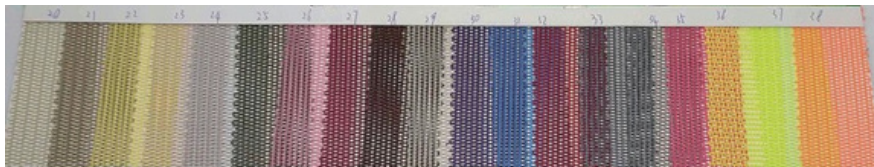
## FRONT COLOR SWATCH:JH-12860



## CC YH MESH-1



## CC YH MESH-2



# 9112CR 6 PANEL TRUCKER HATS

SIZE:51-64cm CUSTOM

FABRIC:COTTON

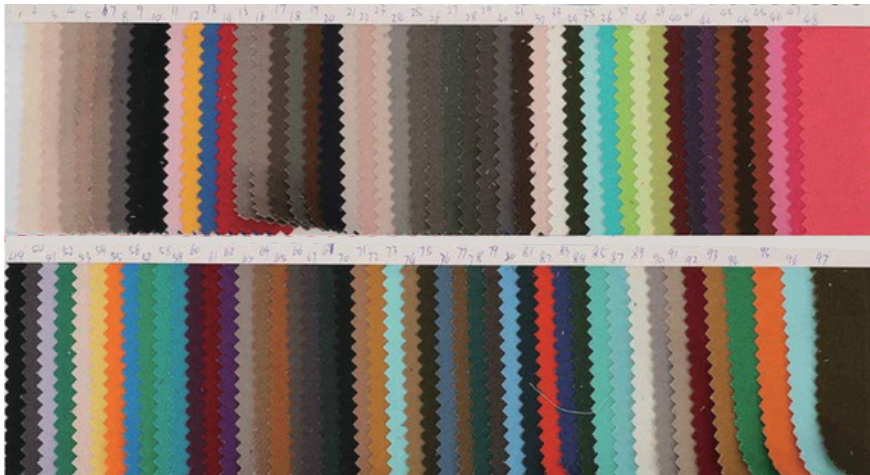
&POLYESTERMESH BRIM:ML-045

PRE CURVED 7CM

Popular 6 panel trucker hat style, front panel is with simple and premium embroidery patch.It's made of premium cotton fabric and polyester mesh.Breathable mesh to help keep cool in Summer.



## FRONT COLOR SWATCH:JH-12860



## BACK COLOR SWATCHES:CCJM



# 9511CR 6 PANEL TRUCKER HATS

SIZE:51-64cm CUSTOM

FABRIC:COTTON & POLYESTER MESH

BRIM:9167 FLAT 7CM

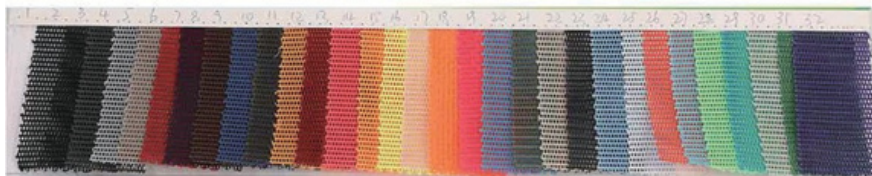
Classical popular versatile hip-hop snapback hats style, front panel is with flat embroidery. It's in plain color, special and bright logo to stand out the design.



## FRONT COLOR SWATCH:JH-12860



## BACK COLOR SWATCHES:CCJM



# 9168CR 7 PANEL TRUCKER HATS

SIZE:51-64CM CUSTOM

FABRIC:COTTON & POLYESTER

BRIM:9167 FLAT 7CM

Classic 7-panel snapback trucker hats, the front panel has digital printing patch with embroidered logo and edge. Casual style and comfortable to wear.



## FRONT COLOR SWATCH:JH-12860



## BACK COLOR SWATCHES:CCJM



# 9034 UNSTRUCTURED 6 PANEL BASEBALL HATS

**SIZE:**51-64cm      **CUSTOM**  
**FABRIC:**COTTON      **BRIM:**F-023  
**CURVED** 7CM

Classic baseball cap style with flat embroidery logo, special worn out holes on brim. Unstructured crown can fit headshape well so feel comfortable. A variety of color combinations can be customized, versatile and popular style.



# SY 10856



## 940 STRUCTURED BASEBALL HATS

**SIZE:**51-64cm CUSTOM

**FABRIC:**COTTON

**BRIM:**FL-023 CURVED 7CM

Classic baseball hat has sublimation American flag pattern, with local characteristics. It's good to customise other gorgeous pattern also. Front panel is with premium woven patch.



## SY 10856



# 9011CA 6 PANEL BASEBALL HATS

**SIZE:**51-64cm CUSTOM

**FABRIC:**POLYESTER/SPANDEXBLEND

**BRIM:**F-023 CURVED 7 CM

Quick-dry,cool feeling baseball hat, with a durable silicone logo.Breathable laser holes on back panel and made of polyester spandex blended fabric. Unstructured front and drift fabric to keep cool and comfortable while doing sports.



## BXS NS3670



# F-602 BRIMLESS HATS

SIZE:51-64cm CUSTOM

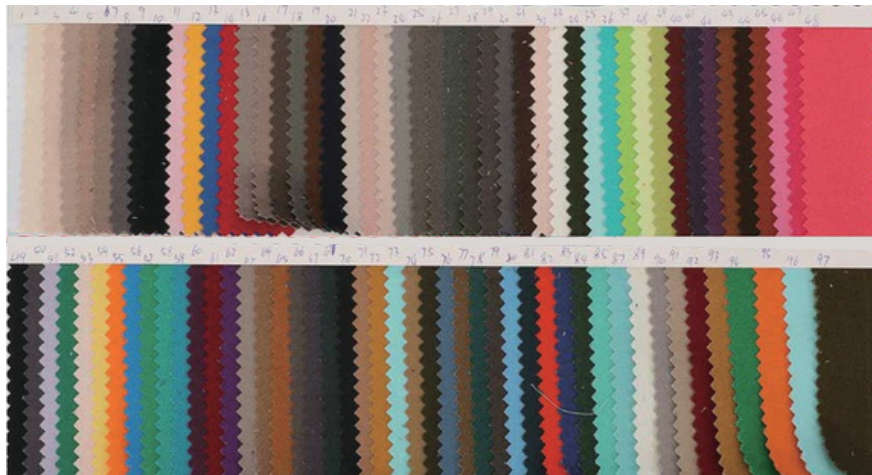
FABRIC:COTTON

BRIM:NO

Fashional round top brimless hat style, a premium woven label on rolling. It's made of soft and durable cotton twill fabric. A variety of color combinations can be customized.



## FRONT COLOR SWATCH:JH-12860



## 9012CH 5PANEL SNAPBACK HATS

**SIZE:**51CM-64CM CUSTOMIZED

**FABRIC:**COTTON BLENDS NYLON

**BRIM:**9167 FLAT SQUARE 7 CM

Classic 5 panel flat brim mid-structured rope hat with front woven patch and green border stitch.

Green visor rope matches main logo color which color also can be customized to meet different custom requirements for different logos.



## CF-XGFRFH



# 9039 5 PANEL SNAPBACK HATS

SIZE:51CM-64CM CUSTOM

FABRIC:COTTON AND POLYESTER MESH

BRIM:9167 FLAT SQAURE 7 CM

5 panel structured flat brim mesh hat style with hard buckram inside. Front large 3D embroidery and regular embroidery outline stands out the logo better. Premium fabric and mesh to make the ordinary extraordinary.



## JH-12860



## CC-YHW



# 9106 6 PANEL SNAPBACK HATS

**SIZE:**51CM-64CM CUSTOMIZED

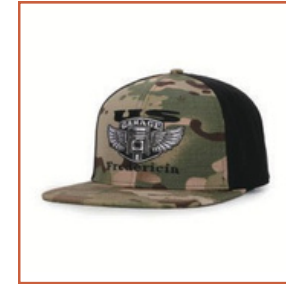
**FABRIC:**ACRYLIC AND WOOL

**BRIM:**F-07 FLAT SQAURE 7 CM

6 panel flat brim snapback hat style features high quality wool and acrylic woven fabrication with 3D raised embroidery logo at the front panels and combinate heather gray and black color.



## CC-A&C



# ML-069 CAMPING HATS

SIZE:51CM-64CM CUSTOM

FABRIC:POLYESTER & POLYESTER

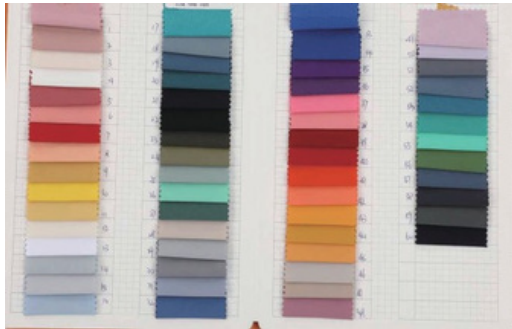
MESH BRIM:ML-069 FLAT EVA 7 CM

Breathable fabric on the front and back.

New lightened EVA brim means the standard that started it all is now lighter, more breathable, more packable.



# CF-C8132



# MY-Moisture wicking



## 9101 CAMPING HATS

**SIZE:**51CM-64CM CUSTOM

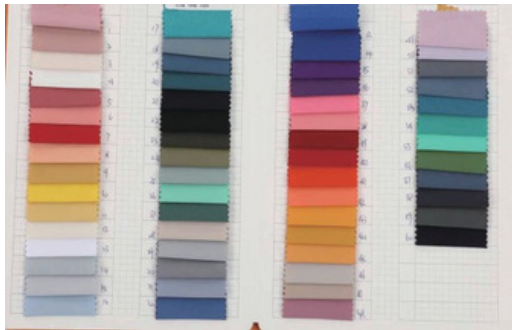
**FABRIC:**POLYESTER & POLYESTER MESH

**BRIM:**ML-069 FLAT EVA 7 CM

Breathable fabric on the front and back panels coupled with mesh on the top and sides. New lightened EVA brim means the standard that started it all is now lighter, more breathable, more packable.



## CF-C8132



## MY-mesh



# 9256CR 5PANEL LASER PERFORATED HOLE HATS

**SIZE:**51-64CM CUSTOMIZED

**FABRIC:**POLYESTER&POLYESTER MESH

**BRIM:**9167 FLAT SQUARE 7 CM

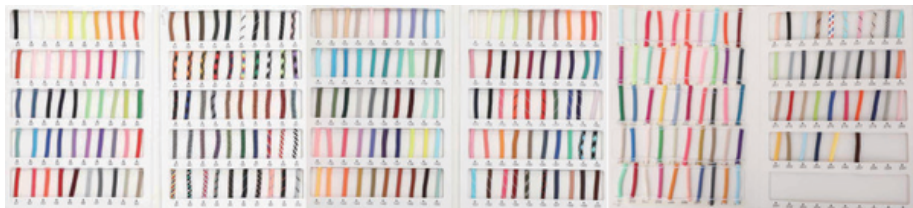
Rope give this cap a unique look, front panel hugs your head well. Fabric is quick dry, to help keep you cool, comfortable, while enjoying the great outdoors. Structured and unstructured hat type are available to do and made as your requirements.



## MS-A3560



## XC-ROPE



## 9039 5 PANEL LASER PERFORATED HOLE HATS

**SIZE:**51-64CM CUSTOM

**FABRIC:**POLYESTER & SPANDEX

**BRIM:**9167 FLAT SQUARE 7CM

The 5-panel structural snapback hat features a water-resistant exterior, moisture-wicking liner and lightweight visor core, and can be combined with rope for decoration. Laser perforation increases breathability and flexibility, which is highly sought after by customers. There is a point on the front panel, which can fit the head better. This style is also an additional choice for flat hat lovers.



## MS-A3560



## 9002CM 6PANEL LASER PERFORATED HOLE HATS

**SIZE:**51CM-64CM CUSTOMIZED

**FABRIC:**POLYESTER & SPANDEX

**BRIM:**9002CM CURVED 6.5CM

This cap is made of our most lightweight performance fabric to help keep you cool, comfortable, and protected while enjoying the great outdoors. It's rated UPF 50 and built to wick sweat away. The hats are water resistant, floatable, and breathable, is a best choice for going out. Most popular shape that features curved bill for a modern look.



## MS-A3560



## 9001CM 6PANEL LASER PERFORATED HOLE HATS

**SIZE:**51-64CM CUSTOM

**FABRIC:**POLYESTER & SPANDEX

**BRIM:**9167 FLAT SQUARE 7CM

The 6 panel flat bill hat features a form-fitting, elevated flat visor construction with signature Horizon construction. The light and quick-drying fabric combined with the laser perforation on the back maximizes the breathability of the entire hat. The surface of the fabric is also treated with water-repellent treatment, water drops will not leave traces. Hat is made of durable material that is waterproof, floatable and breathable.



## MS-A3560



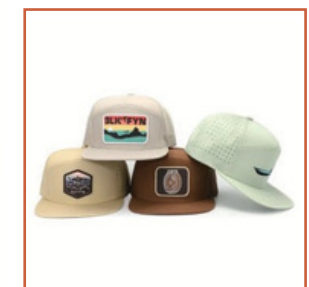
# 9168CR 7PANEL LASER PERFORATED HOLE HATS

**SIZE:**51-64CM CUSTOM

**FABRIC:**POLYESTER & SPANDEX

**BRIM:**9167 FLAT SQUARE 7CM

The 7-panel structural laser-perforated hat combined with the flat brim inspires a variety of hat shapes. The performance hat is ultra-lightweight, floats in water with innovative technology and is water-resistant and sweat-wicking. Whether it is a special laser drilled shape, or a bold and wonderful color matching, we can meet your customization needs.



# MS-A3560



# 940 NORMAL BRIM VISOR

**IRON NO:**940

**SIZE:**51-64CM CUSTOM

**FABRIC:**POLYESTER&SPANDEX

**BRIM:**CURVED 7CM

1. Sweat-wicking mesh liner is super-soft and breathable to keep you cool.
2. The padded front panel is so comfortable you'll forget its even on.
3. Adjustable hook & loop closure to fit any size head.



# BXS-8827



# 330 BIG BRIM VISOR

**IRON NO:**330

**SIZE:**51-64CM CUSTOM

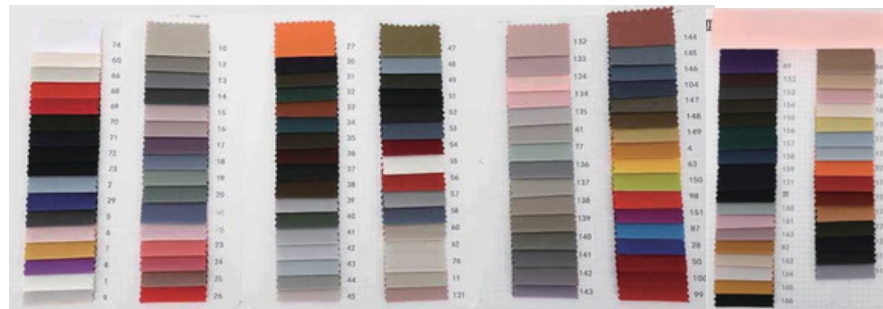
**FABRIC:**POLYESTER&SPANDEX

**BRIM:**SLIGHT CURVED 7CM

Hard-to-deform brim: The empty top design allows you to shade while avoiding the sultry top of the head; the brim is sturdy without denting or losing it's shape that subtly block the sun and protect the face from sun rays.



# BXS-8827



# 9022 SINGLE SIDED BUCKET HATS

SIZE:51-64CM CUSTOM

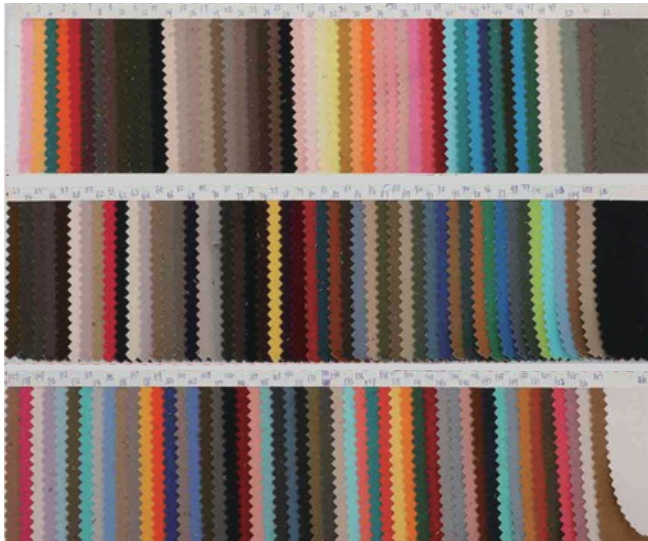
FABRIC:POLYESTER

BRIM:7CM

This convenient and environmentally friendly Bucket Hat can protect your eyes and skin from harsh sunlight. It is lightweight so you can easily fold it and put it in your bag. This cool hat is suitable for daily wear, sports, and outdoor activities such as beach, hunting, camping, fishing, and hiking beach vacation.



## JH-10856



# 9058 REVERSIBLE BUCKET HATS

SIZE:51-64CM CUSTOM

FABRIC:COTTON&POLYESTER

BRIM:7CM

Camouflage Military Hats for Men/Women: Show off your personality and style with the urban style head hat go for recreation or outdoor activities. Match for daily casual clothing such as ,shirt, jeans, sunglasses and so on.



# SY-10856



# 9175 SINGLE SIDED BUCKET HATS

**SIZE:**51-64CM CUSTOM

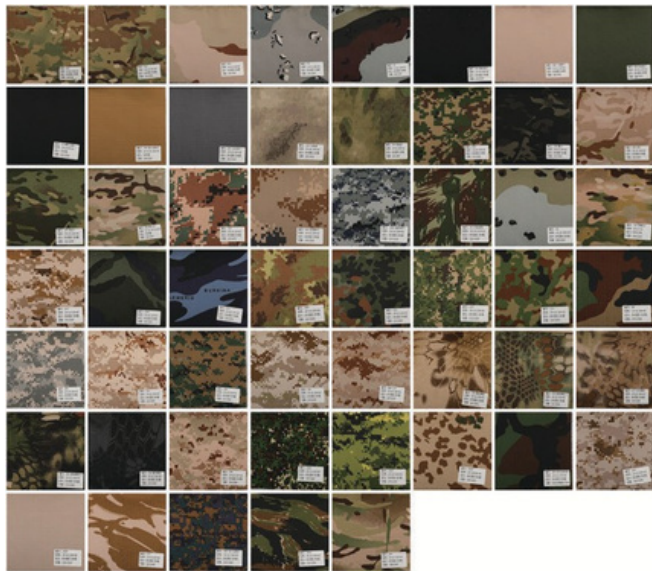
**FABRIC:**POLYESTER

**BRIM:**7CM

This hat was designed to for sunshine! An extra wide brim, our most lightweight performance fabric with R-ACTIVE tech, a bungee with toggle to adjust sizing and a UPF 35 rating are sure to keep you cool and protected.



## KD-RIP STOP



# 940 NORMAL CAMO TACTICAL HATS

**IRON NO:**940

**SIZE:**51-64CM CUSTOM

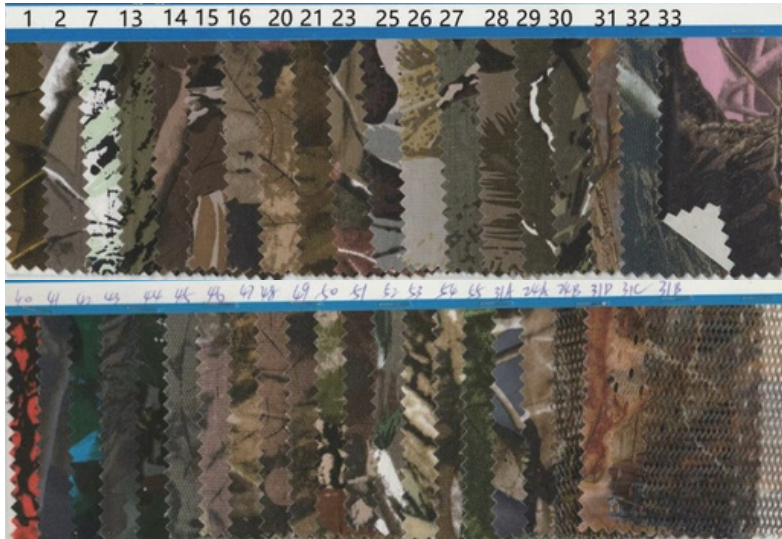
**FABRIC:**COTTON&POLESTER

**BRIM:**CURVED 7CM

Unique and stylish design : classic unstructured patriotic cap always been great for pairing with all your casual outfits, simple and low profile, more fashion and trendy look.



# HC 601



# CCJM



# MS112 RIP STOP TACTICAL HATS

**IRON NO:MS112**

**SIZE:51-64CM CUSTOM**

**FABRIC:POLYESTER**

**BRIM:SLIGHT CURVED 7CM**

RipstopHat isa unique mesh hat with ripstop material that delivers crease protection and higher moisture wicking performance.



# SY-10856



# MS112 JUNGLE CAMOUFLAGE TACTICAL HATS

**IRON NO:MS112**

**SIZE:**51-64CM CUSTOM

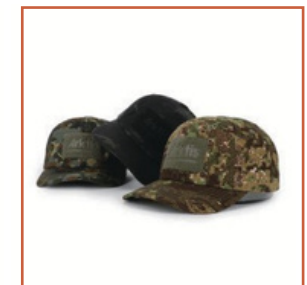
**FABRIC:**POLYESTER

**BRIM:**SLIGHT CURVED 7CM

these hats are made of cotton material, soft and breathable, comfortable to wear, easy to carry, durable and washable, not easy to fade or distort, suitable for your daily and long-term wear.



## SY-10856



# PLAIN BEANIES

**SIZE:**BABY/KIDS/ADULT

**FABRIC:**ACRYLIC

**BRIM:**NO CUFF

Brightly colored jacquard beanie keep yourself warm this winter by keeping your head warm. Keeping your head warm may be the foundation in keeping your whole body warm.



# FF-ACRYLIC



# WAFFLE BEANIES

**SIZE:**BABY/KIDS/ADULT

**FABRIC:**ACRYLIC

**BRIM:**CUFF

The woven label and cuff are perfectly matched, and the mid-weight acrylic is lightweight and warm, with a wool-like feel.



# FF-ACRYLIC



# RIBBS BEANIES

SIZE: BABY/KIDS/ADULT

FABRIC: ACRYLIC

BRIM: CUFF

The beanie features an anti-pilling outer shell and a cozy double layer for extra comfort on cold winter days.



# FF-ACRYLIC



# POM POM BEANIES

**SIZE:**BABY/KIDS/ADULT

**FABRIC:**ACRYLIC

**BRIM:**CUFF

100% acrylic construction is lightweight, soft and warm with a wool-like feel. The cuff provides 360° of space for a custom patch or embroidery, and the stripes design and pom add some complementary color to this on-trend style.



# FF-ACRYLIC



# STRAW HATS

**SIZE:**57-59 CM

**FABRIC:**STRAW AND POLYESTER

**BRIM:**

While hanging out the beach or outdoor with this straw hats,it can stay cool.It is one size fits most,since the chin rope with the adjustable toggle.It features striking rubber patch on the front and a vibrant under brim pattern.



**MFEM301 2D**  
2D/flat embroidery



**MFEM302 2D**  
2D/flat embroidery



**MFEM303 2D**  
2D/flat embroidery



**M3DEM301 2D**  
2D/flat embroidery



**M3DEM302 3D**  
3D/puff embroidery



**M3DEM303 3D**  
3D/puff embroidery



**M3DFEM301 3D+**  
3D+flat embroidery



**M3DFEM302 3D+**  
3D+flat embroidery



**MFAEM301**

Felt applique+embroidery



**MFAEM302**

Felt applique+embroidery



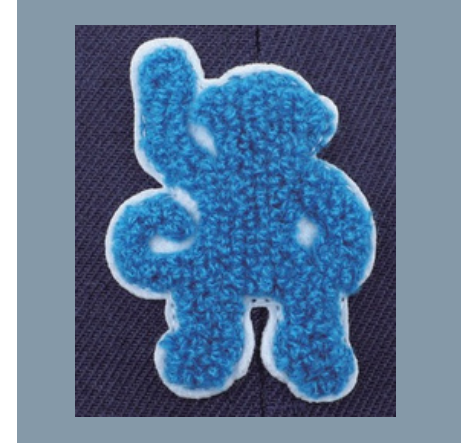
**MCEEM301**

Chenille embroidery



**MCEEM302**

Chenille embroidery



**MCAEM301**

Chain embroidery



**MCAEM302**

Chain embroidery



**MAEMP301**

Applique+embroidery patch



**MAEMP302**

Applique+embroidery patch



**MFEMP301**  
Flat embroidery patch



**MFEMP302**  
Flat embroidery patch



**MFEMP303**  
Flat embroidery patch



**MSPERM301**  
Sublimated patch with embroidery edge



**MSPERM302**  
Sublimated patch with embroidery edge



**MSPM301**  
Sublimated patch with merrowed edge



**MAEMPM301**  
Applique+embroidery patch with merrow



**MAEMPM302**  
Applique+embroidery patch with merrow



MWPM301  
Woven patchwithmerrow



MWPM302  
Woven patchwithmerrow



MWPEM301  
Woven patch with embroidery edge



MTPUEB301 TPU  
TPU EMBOSSED



MTPUEB302 TPU  
TPU embossed



MTPUEB303 TPU  
TPU embossed



MPVCEB301 PVC  
PVC embossed



MPVCEB302 PVC  
PVC EMBOSSED



**MSIEB301**  
Silicone embossed



**MSIEB302**  
Silicone embossed



**MSIP301**  
Silicone patch



**MGLPEB301**  
Genuine leather patch with embossed logo



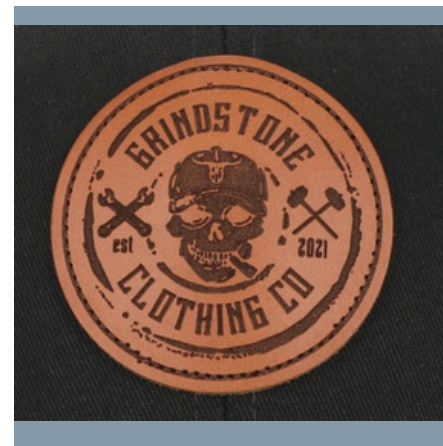
**MGLPEB302**  
Genuine leather patch with embossed logo



**MGLPEB303**  
Genuine leather patch with embossed logo



**MVTLPB301**  
Vegetable tanned leather patch with burned logo



**MVTMLVTPLBPB330022**  
Vegetable tanned leather patch with burned logo



### MFLPEB301

Fake leather patch with embossed logo



### MFLPEB302

Fauxleatherpatchwithembossedlogo



### MSLPEB301

Suede leatherpatchwithembossedlogo



### MSLPEB302

Suede leatherpatchwithembossedlogo



### MGLPEBP301

Genuine leather patch with embossed and printing logo



### MFLPB301

Fake leather patch with burned logo



### MMP301

Metal patch

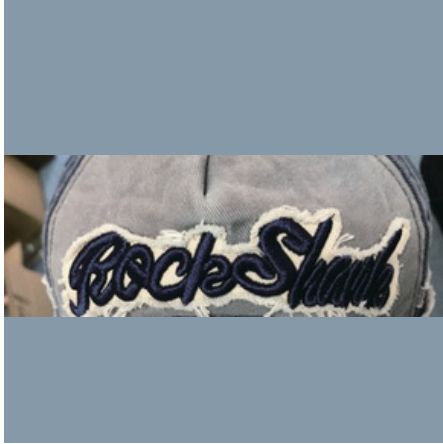


### MHTP301

Heat transfer printing



**MA3DEM301 3D+**  
Applique+3D embroidery



**M3DEMR301 3D**  
3D embroidery+rhinestones



**MMEM301**  
Metallic embroidery



**MMEM302**  
Metallic embroidery



**MGEM301**  
Gradient embroidery



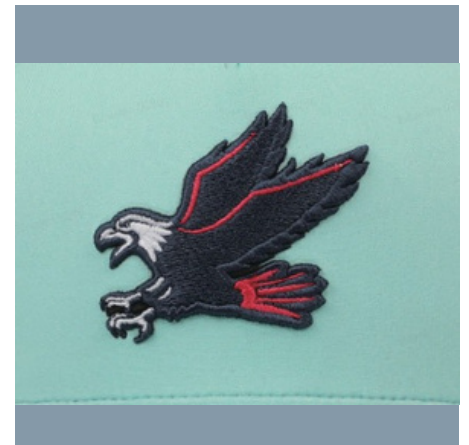
**MGEM302**  
Gradient embroidery



**M3DTTMEM301 3D**  
3Dembroidery



**M3DTTMEM302 3D**  
3D embroidery



**MDP301**  
Digitalprinting



**MJP301**  
Jetprint



**MSP301**  
Screenprinting



**MSP302**  
Screen printing



**MREFLP301**  
Reflective printing



**MTD301**  
Tie-dye



**MJACQ301**  
Jacquard



**MCM301**  
Custom metal logo



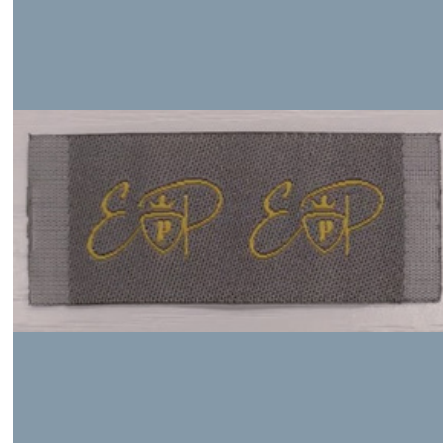
**MWL301**  
Sweatband woven label



**MWL302**  
Sweatbandwovenlabel



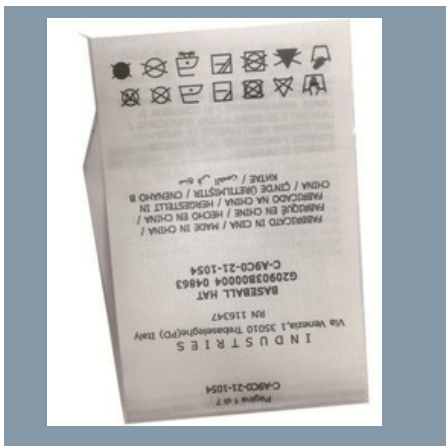
**MWL303**  
Back closure wovenlabel



**MCRL301**  
Care label



**MCRL302**  
Care label



**MCRL303**  
Care label



**MCTL301**  
Cotton label



**MCTL302**  
Cotton label

