



# CORRESPONDANCE

BRASSERIE BY SAN DEGEIMBRE



CORRESPONDANCE



CORRESPONDANCE is both a destination and point of departure, a voyage through the culinary prism of a visionary chef.

Situated directly across from Maison de la Poste at Gare Maritime, CORRESPONDANCE embodies a "Brasserie Bistrotière" concept, offering dishes infused with elements of travel, prioritising plant-based options, responsibly sourced ingredients, and above all, the essence of indulgence.

Our menu invites you to journey with the comfort of the familiar, in an environment that invites guest to linger for longer.

CORRESPONDANCE is available for exclusive rental and can host up to 255 guests. We tailor our approach to suit each of your events, ensuring a personalised experience.

BON VOYAGE

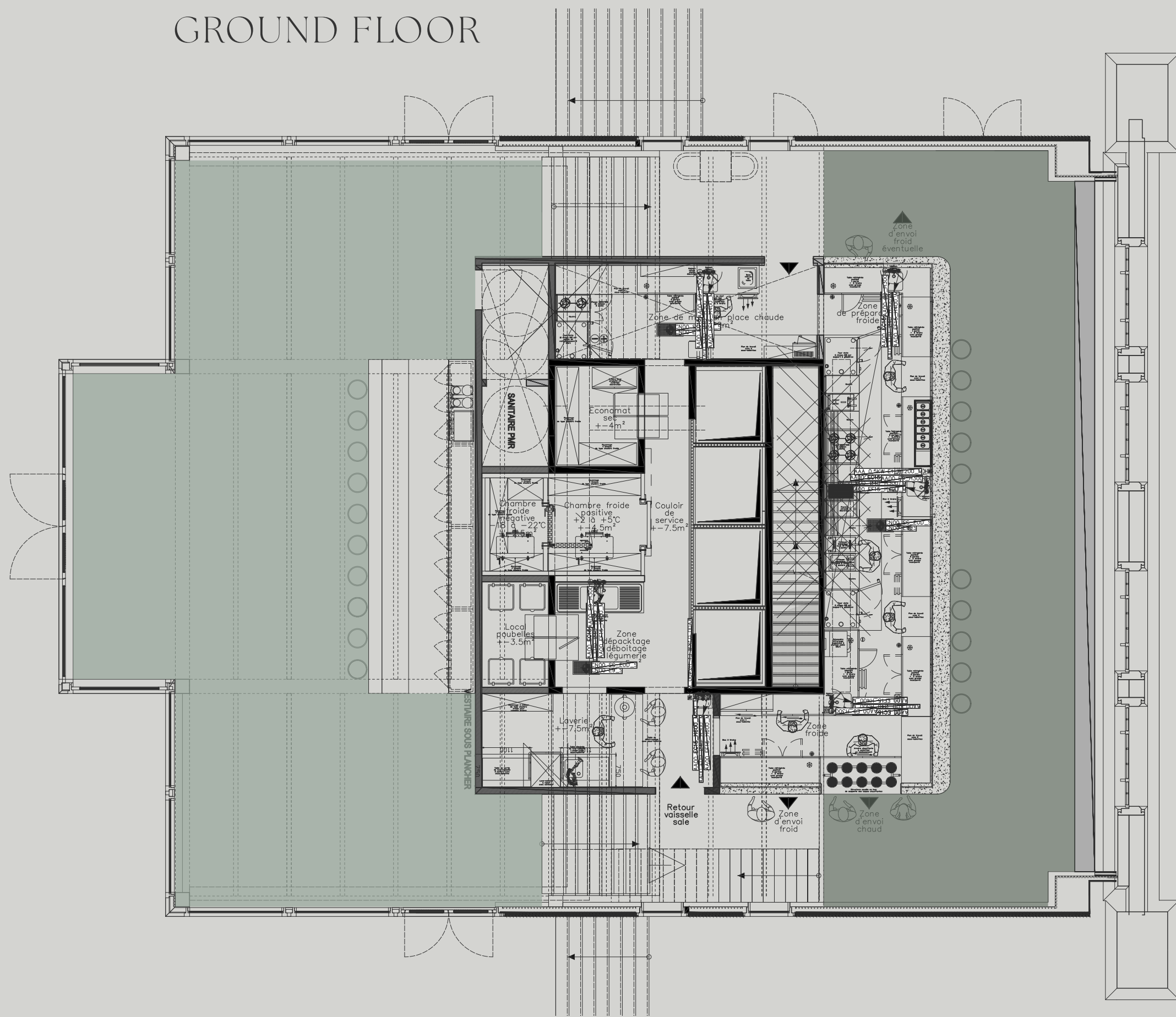
CORRESPONDANCE

BRASSERIE BY SAN DEGEIMBRE

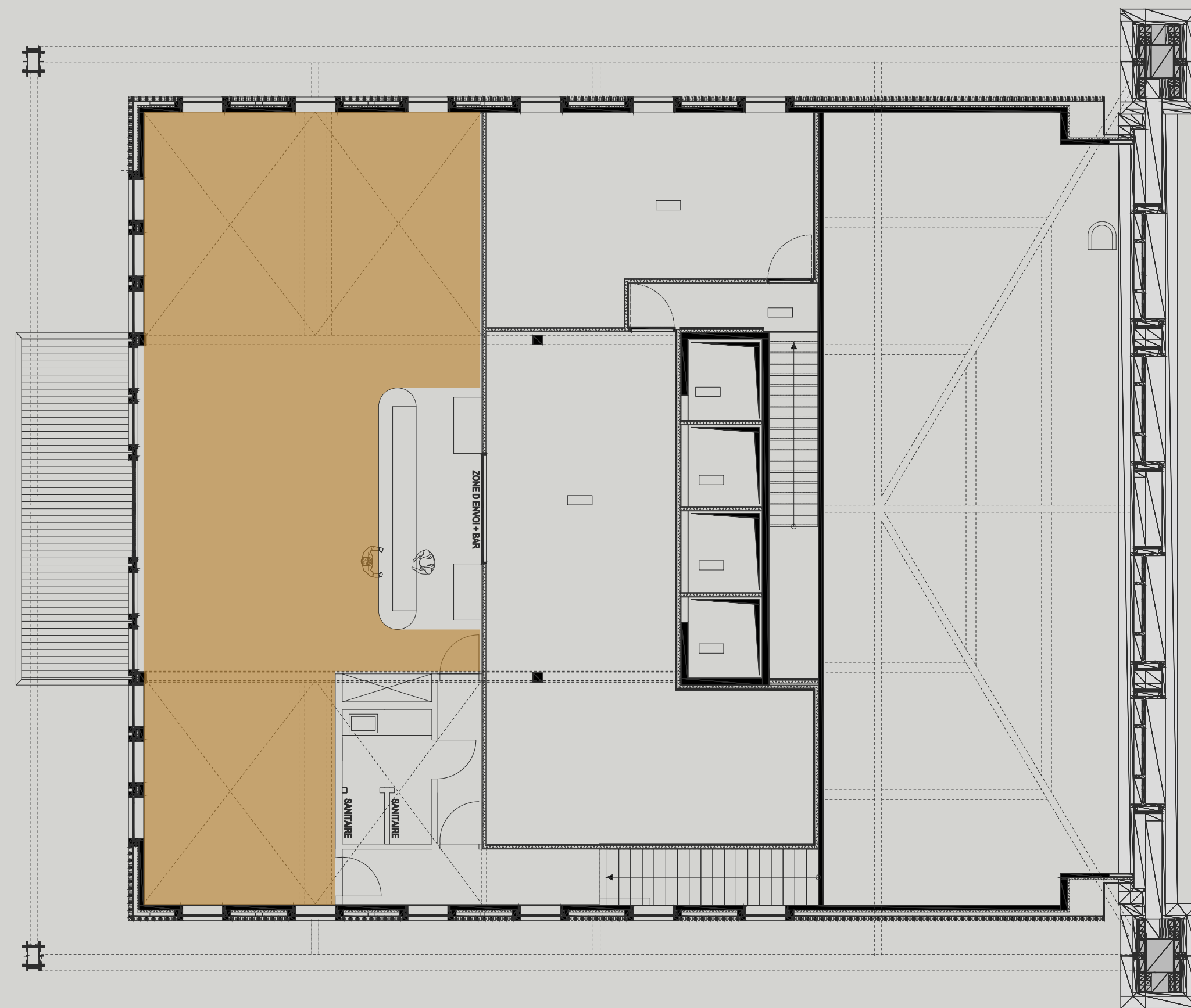
# HOSPITALITY & CATERING

# THE 3 HOSPITALITY AREAS

GROUND FLOOR



FIRST FLOOR



● BAR ROOM - 117m<sup>2</sup>

● KITCHEN ROOM - 57,5m<sup>2</sup>

● TERRACE ROOM - 91m<sup>2</sup>

CORRESPONDANCE

BRASSERIE BY SAN DEGEIMBRE

	CAPACITY	ROOM	PRICE
THE SEATED DINNER	< 40 pax	Please make your reservation online.	-
	40 - 52 pax	Bar or Kitchen Room.	650 €
	52 - 110 pax	Bar and Kitchen Room*	1.300 €
THE WALKING DINNER	60 - 85 pax	Terrace Room.	900€
	85 - 110 pax	Bar Room.	650 €
	110 - 170 pax	Bar and Kitchen Room*	1.300 €
THE RECEPTION	20 - 60 pax	Semi-exclusive space: Bar Room.	9€/pp
	60 - 110 pax	Bar Room.	650 €
	110 - 170 pax	Bar and Kitchen Room*	1.300 €

All reservations must be made 4 weeks in advance.  
No PRM access to Kitchen & Terrace Rooms.

\*Option: Exclusivity CORRESPONDANCE, including our Terrace Room.  
Extra cost: 900 €, with the option of adding 60 pax at the seated dinner  
and 85 pax for the walking dinner

# THE SEATED DINNER

# THE SEATED DINNER

## CATERING

### DAILY LUNCH

28,80 €/pp

### BAR

- 0.5l water pp (still or sparkling);
- Coffee or tea.

### FOOD

Daily Special

### TWO COURSE MENU - Lunch time only

44,50 €/pp (Main course + Dessert)

50 €/pp (Starter + Main course)

### BAR

- 1 glass of wine, Osan water, 25cl Beer or a Soft drink;
- 0.5l water pp (still or sparkling);
- Coffee or tea.

### FOOD

Main course + Dessert

or

Starter + Main course

# THE SEATED DINNER

## CATERING

### THREE COURSE MENU

67 €/pp

#### BAR

- Aperitif (with or without alcohol)
- 2 glasses of wine, Osan Water,  
25cl Beer or Soft drink;
- 0.5l water pp (still or sparkling);
- Coffee or tea.

#### FOOD

Starter  
Main course  
Dessert

### FOUR COURSE MENU

86,50 €/pp

#### BAR

Open Bar: Selection of wine and/or alcohol-free pairing.

#### FOOD

Two Starters  
Main course  
Dessert





# THE SEATED DINNER

## BOOKING TERMS

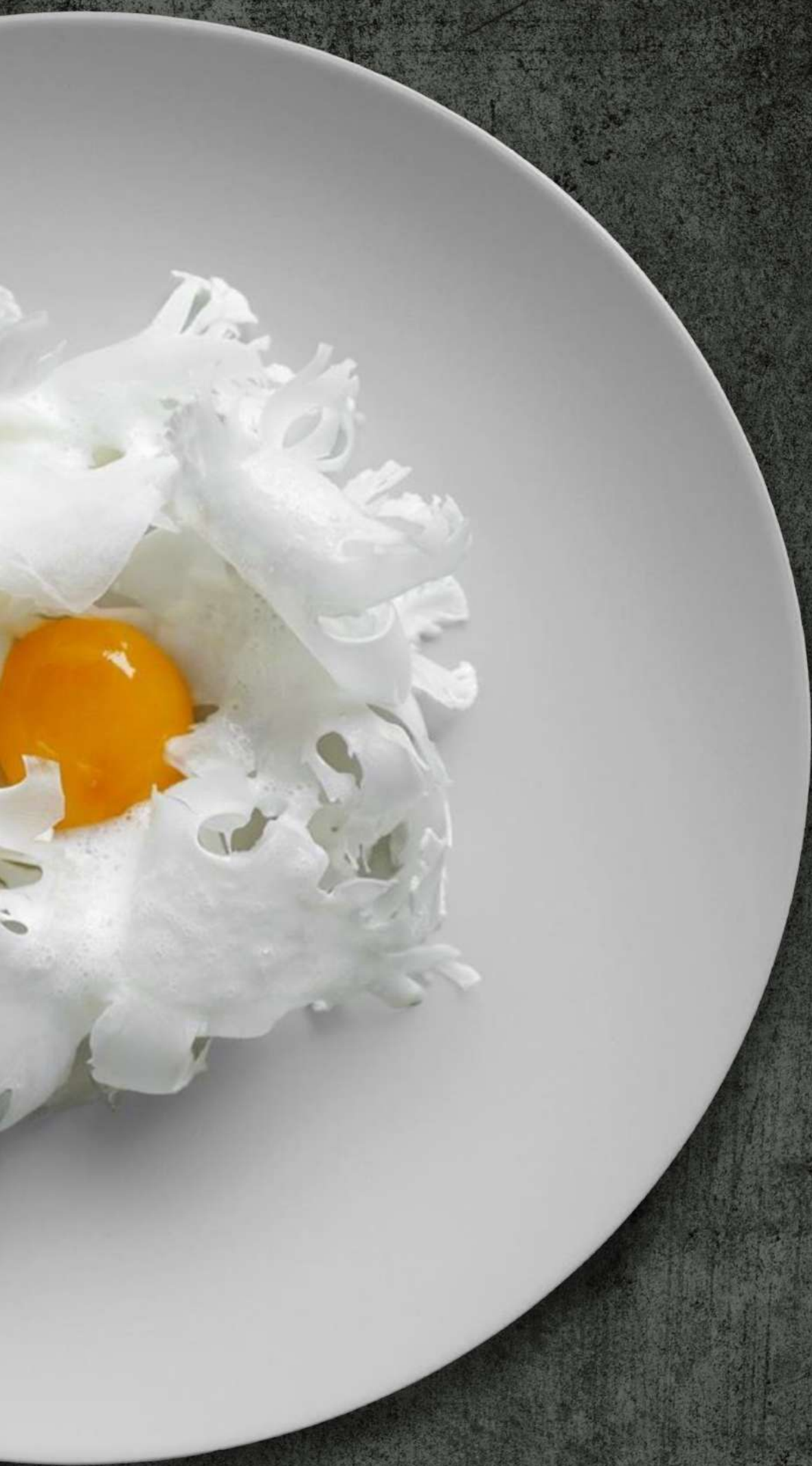
### FOOD

All dishes are based on seasonal availability and inspirations of the chef and are therefore subject to change.

### STAFF

Above 40 pax, 1 host / hostess / 70 pax: 35 €/h (min. 4h).

# THE WALKING DINNER



# THE WALKING DINNER

## CATERING

### 3 HOUR WALKING DINNER

83 €/pp

#### BAR

3h Open Bar  
Selection of wine and/or  
alcohol-free pairing.

#### FOOD

Les Patiences : 3 one-bites pp  
Les Colis : 4 bowls pp  
Dessert : 2 mini desserts pp

### 4 HOUR WALKING DINNER

92 €/pp

#### BAR

4h Open Bar  
Selection of wine and/or  
alcohol-free pairing.

#### FOOD

Les Patiences : 4 one-bites pp  
Les Colis : 4 bowls pp  
Dessert : 2,5 mini desserts pp



# THE WALKING DINNER

## BOOKING TERMS

### FOOD

All dishes are based on seasonal availability and inspirations of the chef and are therefore subject to change.

### STAFF

- Above 40 pax, 1 host / hostess / 70 pax: 35 €/h (min. 4h).
- 1 waiter / 20 people: 35 €/h (min 4h).
- Transport material: 250€

# THE RECEPTION



# THE RECEPTION

## CATERING

*Beverage ticket: 3,30 €/ticket*

1 ticket = Soft drink or 25 cl Beer

2 tickets = 1 Glass of wine, Osan Water or Special 33cl beer

*Cocktail ticket: 11,20€/ticket*

1 ticket = 1 Special CORRESPONDANCE cocktail

*Open Bar*

2h : 20 €/pp

3h : 26 €/pp

4h : 32 €/pp

*Food:*

4 one-bites pp : 11 €/pp

7 one-bites pp : 19,25 €/pp



# THE RECEPTION

## BOOKING TERMS

### Beverage Tickets & Open Bar

- Must be combined with one of our food options.
- Self-service at the bar.

### Beverage Tickets

- Beverage tickets are dated and cannot be returned.
- Minimum 3 beverage tickets pp
- For Receptions longer than 2 hours the Open Bar option is mandatory.

### Food

All dishes are based on seasonal availability and inspirations of the chef and are therefore subject to change.

### Staff

- Above 40 pax, 1 host / hostess / 70 pax: 35 €/h (min. 4h).
- 1 waiter / 20 people: 35 €/h (min 4h).
- To maintain a « Reception price », the restaurant tables are not replaced with high tables.

# PRACTICAL INFORMATION





# PRACTICAL INFORMATION

## OPENING TIMES

### AVAILABILITIES

MON: 12:00-14:00

TUE: 12:00-14:00

WED: 12:00-14:00

THU: 12:00-14:00 / 18:30-21:30

FRI: 12:00-14:00 / 18:30-21:30

Special opening Monday to  
Wednesday evening, only for offers  
above 3.000 €

### PRICE

All prices are mentioned excl. VAT  
and valid until 31/12/2024

## CONTACT

For bookings & tailor-made offers please  
contact Philippe, our Business Relations  
Manager :

info@correspondance.brussels  
+32 492 69 28 07

CORRESPONDANCE

Gare Maritime

Picardstraat / Rue Picard 9, B 200  
1000 Brussels

www.correspondance.brussels  
@correspondance\_brussels



SEE YOU SOON

CORRESPONDANCE

BRASSERIE BY SAN DEGEIMBRE