



**CLEANTECH AQUA<sup>A/S</sup>**

VALUE OF WASTEWATER



## **ENVIRONMENTALLY FRIENDLY WASTEWATER RECYCLING SYSTEM**

0045 22 26 33 33 - [info@cleantechaqua.com](mailto:info@cleantechaqua.com) - [www.cleantechaqua.com](http://www.cleantechaqua.com)

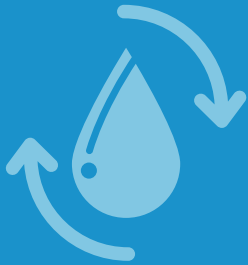
Bejlerholm 10, 9400 Nørresundby, Denmark

**VEHICLE WASH**

Version: September 2021

# SYSTEM BENEFITS

---



## SUSTAINABLE SOLUTION

The system contributes to the **reduction** of your **environmental footprint**. Your company will **protect** the environment from chemicals and contamination, **reduce** the irresponsible consumption of drinking water, **protect employees** from harmful odors, and get a **greener business** and **reputation**.



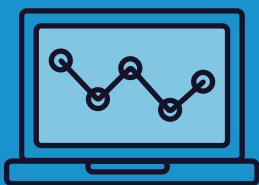
## COST-SAVINGS

**Save** costs of: drinking water, wastewater discharge, sludge removal and disposal, chemical additives, purchase and maintenance of an oil skimmer. Moreover, the system can **harvest** and add **rainwater**, which **minimizes** your water bill.



## EFFICIENCY

The system recycles **100%** of drained wastewater - there is **no discharge**\*. The **quality** of the recycled water is **excellent** - it is as clear as drinking water\*\*. The material composition ensures a **long life time** and **flexibility** of the system.



## INTELLIGENCE & RELIABILITY

You can **control** the system **online**. The control program **collects data** (e.g. the quantity of recycled water, drinking water consumption), which you can use to **document** the reduction of the company's **environmental footprint**. Thanks to our **online service** and error videos, we can help you **immediately** and ensure a **problem-free operation** of your system.



## NO DAILY MAINTENANCE & MOBILITY

You should check the system **only once** a week or every two weeks, otherwise it is **maintenance-free**. The water in the system **does not** have to be **switched**. The unit can be **moved** if needed.

\* There is little discharge in winter periods - the system thins the recycled water down with rainwater/drinking water in order to avoid salt deposits on vehicles.

\*\* It is not potable water - do not drink it.



# OUR CUSTOMERS SPEAK FOR US

"We wash many tanker trucks every day. Therefore, it definitely makes sense that we get the wastewater treated and use it again and again. With the recycling system, we **reduce** our drinking water consumption and get a **greener profile**. At the same time, we **save** quite a lot on our water bill. In the past three years, we have **saved** about **4,702,226 gallons** of drinking water and **102,493 USD\***. And furthermore, it is really **smart** that you can always **follow** the operation of the system **online** in the control program."

- Preben Hansen, Owner & Director in Demstrup Autotransport  
(Nørrevangsvej 6, DK-8620 Kjellerup)

"I definitely **recommend** Cleantech Aqua to everyone who wants to reduce their water consumption. In the past, we had used 2,419,005 gallons of drinking water every year to wash our buses. The system has **reduced** our consumption **with 95 %** (to 120,990 gallons per year). Until now, we have **saved 468,090 USD\*** and **23,245,111 gallons** of drinking water. The system has been in a **constant operation** for 9.5 years and there were just a few smaller reparations. There is **no daily maintenance**, I only clean a strainer every friday."

- Mogens Carlsen, Bus Mechanic in Keolis  
(Lundeborgvej 22, DK-9220 Aalborg)

## WHAT DO YOU GET WITH CLEANTECH AQUA A/S?

- A solution that provides the same **excellent water quality** every time.
- A **greener profile** directly contributing to the fulfillment of the Sustainable Development Goals.
- A **user-friendly control program**, which ensures **high operational reliability**.
- **Documentation** for reduction of your company's environmental footprint (saved freshwater, recycled water, saved discharge, saved CO2 emissions, etc.).
- **Minimal operational costs** and **control** over them.
- Attractive **cost-savings**.
- An opportunity to demonstrate **your contribution** to a more sustainable business world.
- An **great opportunity** to **market your business** (e.g. via green message/story on social media, as a sticker on your vehicles, billboards, videos).



Design the look of your system.

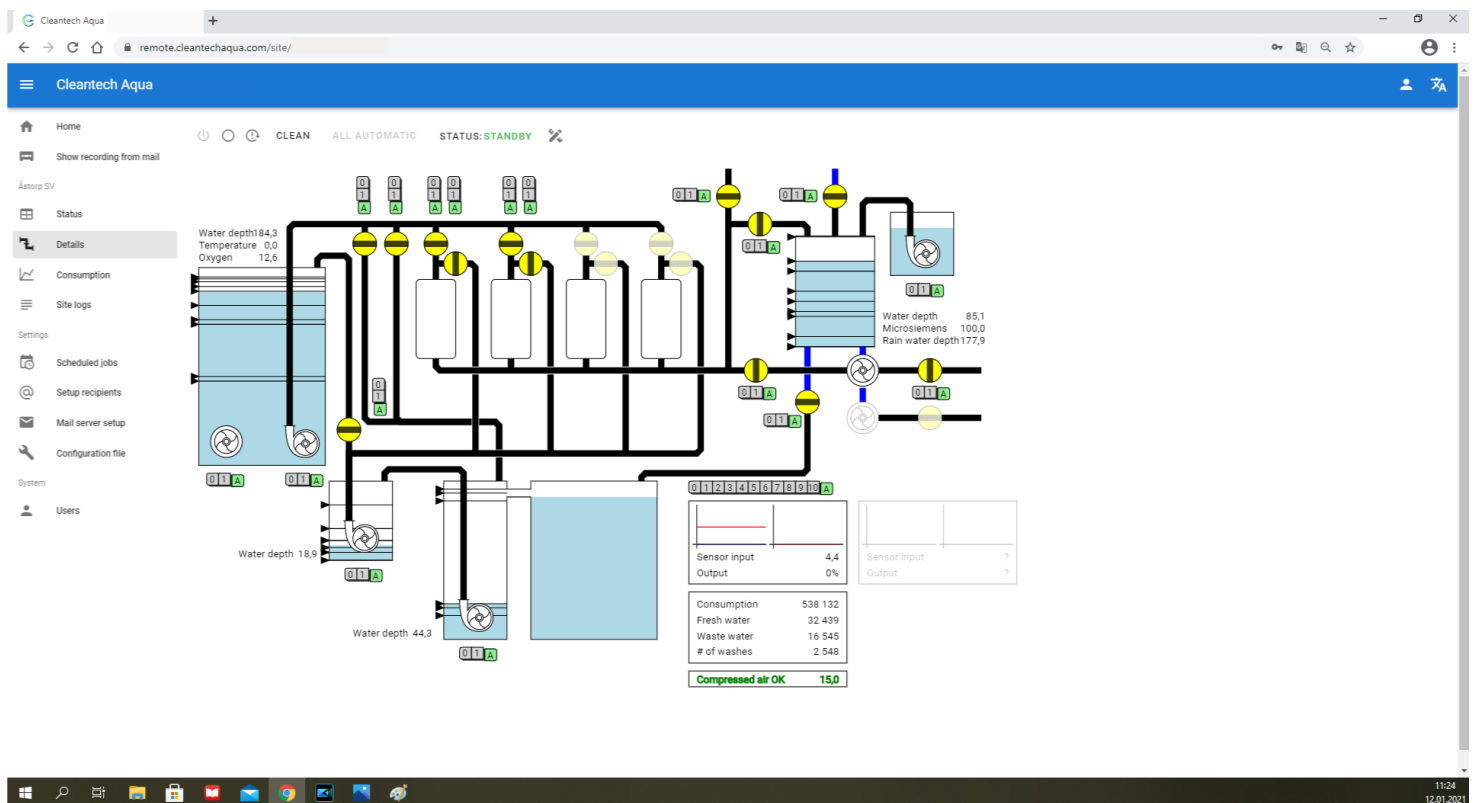


\* The calculations are based on the actual water charges of the Danish municipalities of Aalborg and Silkeborg.

# ILLUSTRATIONS



An **over-ground** wastewater recycling system (on the left), a rainwater harvesting tank (in the middle) and a sludge/settling tank (on the right).



Online control panel significantly **increases** operational **reliability**, **minimizes downtime** and **reduces service calls**.