

Playground video clip

# THE FUNNEL

\_EXPANDING THE MAGIC CIRCLE



CHRISTOPH LEITNER ERIK SANDSTEN JENNY HEDÉN MALM SARA SANDKVIST GUSTAFSSON KARIN WEISSENEGGER



# ANALYSIS OF PLAYGROUND QUALITIES AROUND LILJEHOLMEN



## 1. Adventure Park Årstabergsparken

These larger wooden structures provide a risk element to the play. It is located in a green area, but unfortunately adjacent to barrier train tracks.

## 2. Packrum 3

Some newly-built pyramid shaped wooden structures with slides are located next to a school.

## 3. Kaninparken-Fredborgsparken

A modern playground with a colourful topography and a rabbit theme. Lies next to a kindergarden, in an area of offices and residential buildings.

## 4. Lekplats Blomsterdalen

Despite of its somewhat unfortunate location next to a large road and train tracks, this playground has a large wooden play structure reminiscent of a viking ship.

## 5. Årstabergsparken

A small sand playground in a residential area.

## 6. Fruktlekparken

Large fruit sculptures constitutes the play structures in this park-adjacent playground. It is very close to the Liljeholmen subway, and a larger lake.

## 7. Lekplatsen Främlingsvägen 22-34

This playground is a mix of old and new features, as it lately has been improved by trampolines and swings.

## 8. Lekpark

A small and boring playground in a modern conventional residential area.

## 9. Lurparken

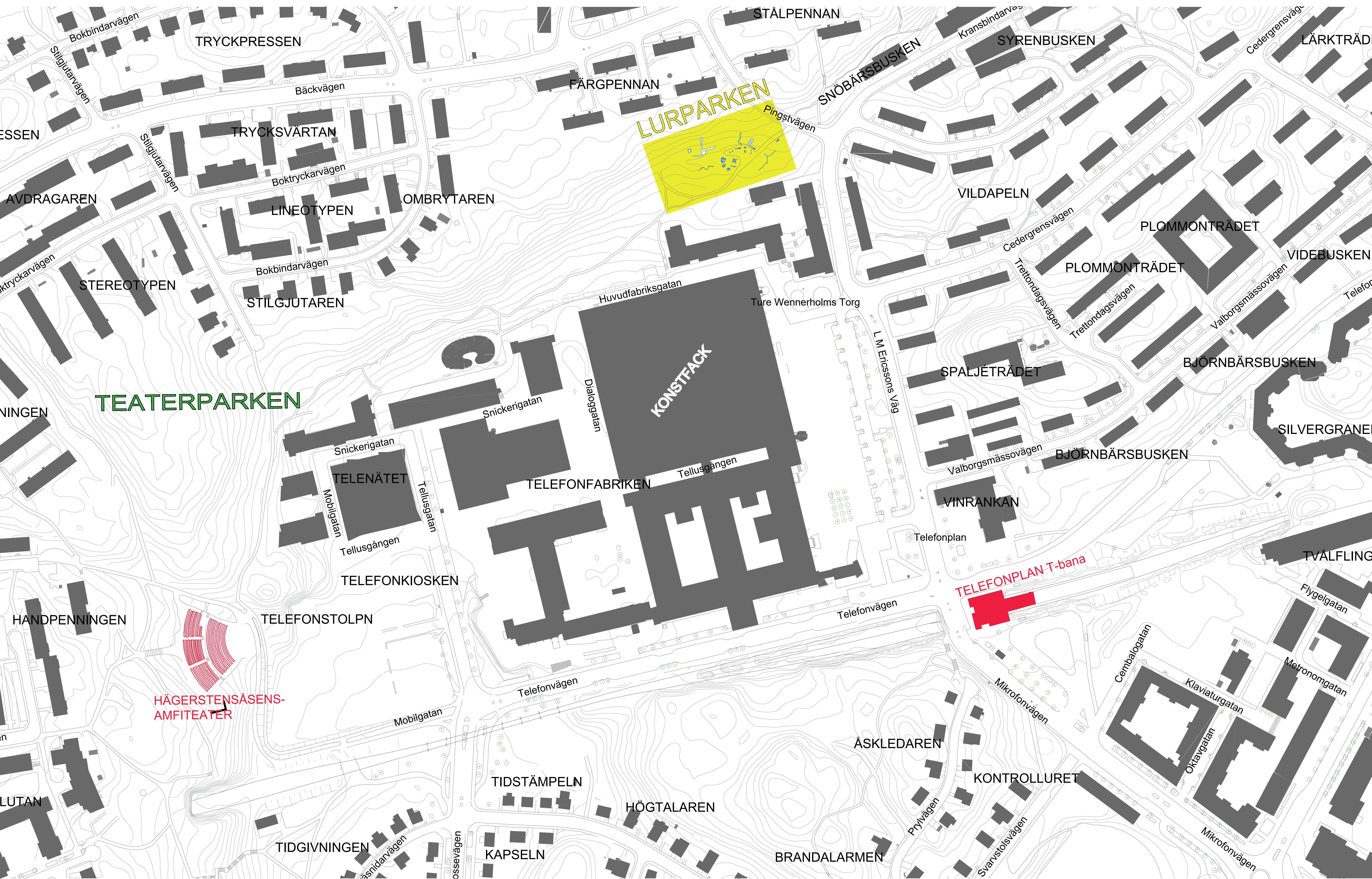
In this playground, art is integrated with play. Some nice sculptural metal features complement the standard equipment in this area close to Telefonplan, the subway and green space.

## 10. Aspuddens Lekpark

In this large activity area, close to several schools and kindergardens, there are activities for many ages. Sport activities and trampolines are complemented with waterplay and a farm with animals.

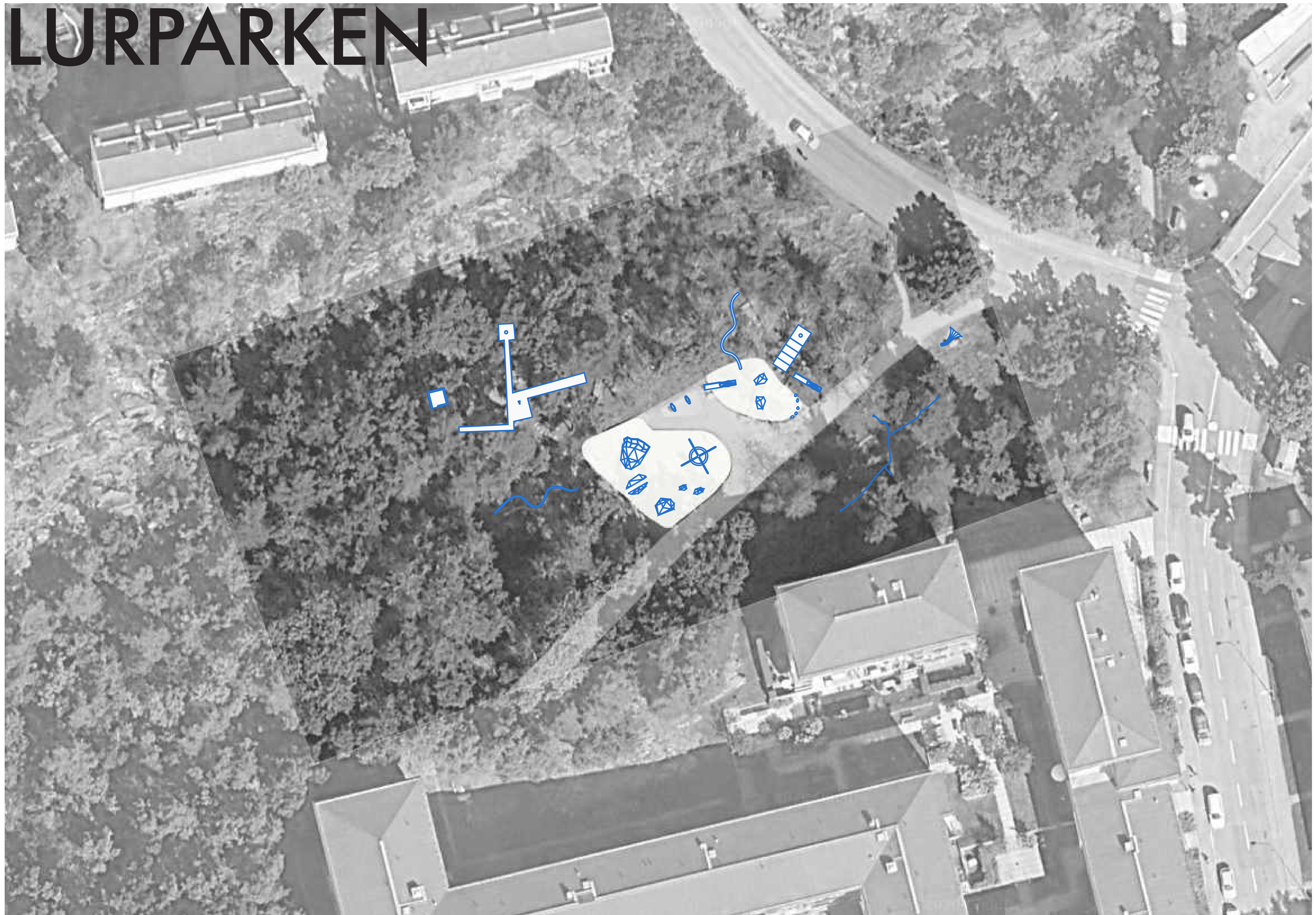


# LURPARKEN

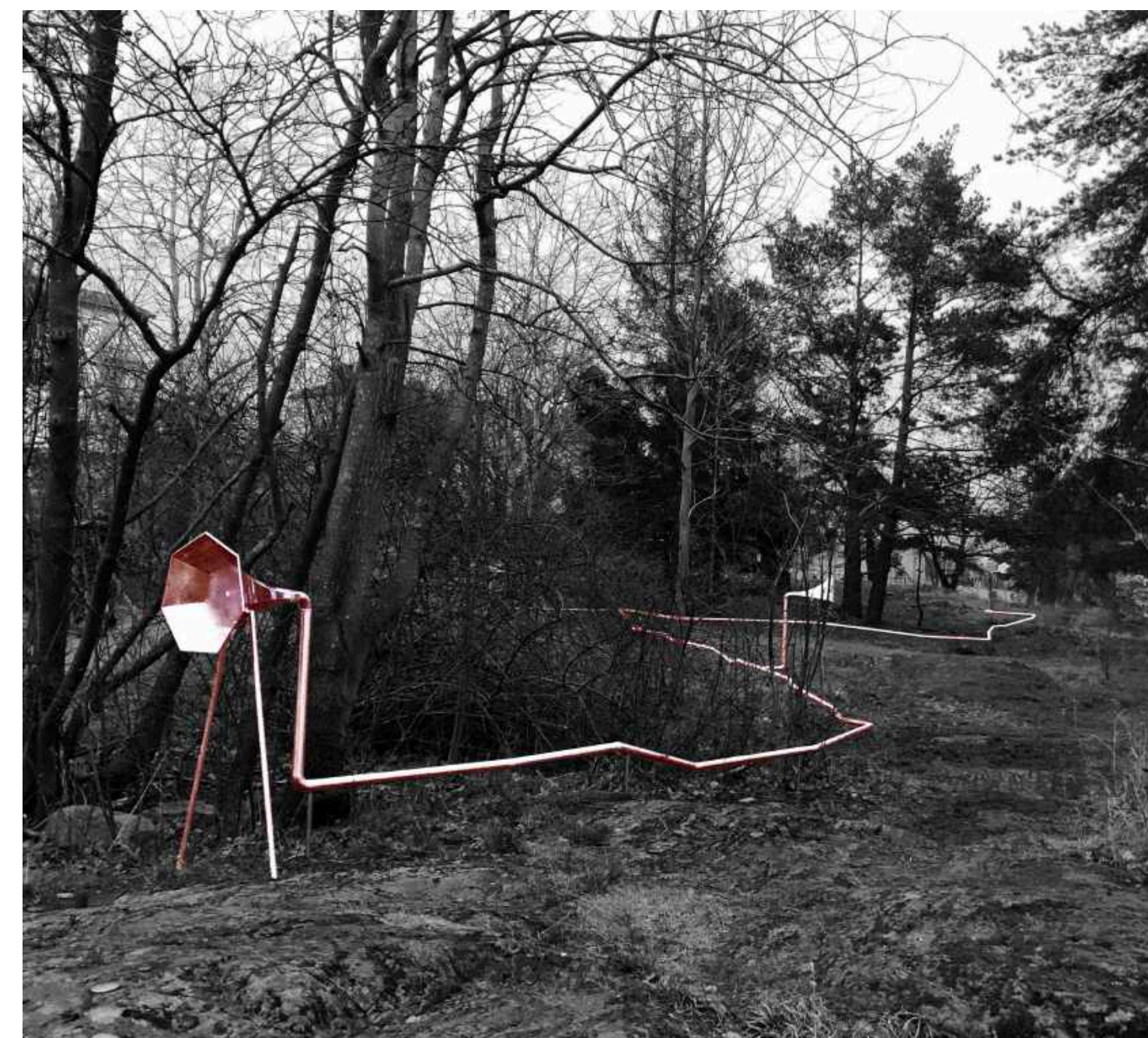




# LURPARKEN







The project aims to create a playground that encourages free play. By having installations that are not obvious playground equipment, the play is not dictated and becomes more unrestricted. In addition, perhaps adults feel a bit more free to interact and the playground has the potential to become a meeting place for all ages.

HENRIK BRANDT



Play is a free activity which takes place in an independent sphere, separated from ordinary life. This sphere is also known as “the magic circle”, where the player is completely absorbed in its activities and follows the internal logic of this world.

Inspired by JOHAN HUIZINGA



# SITES

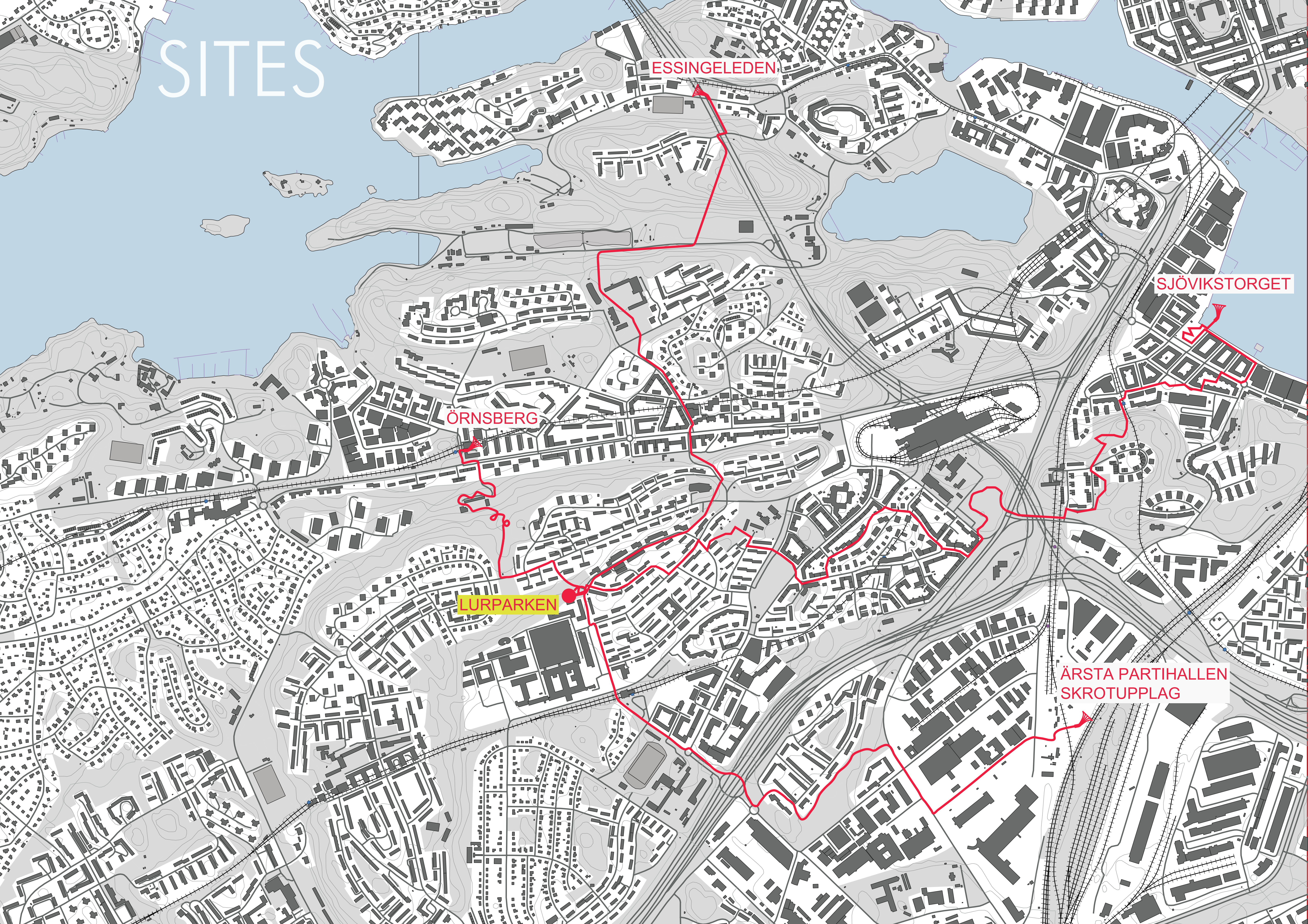
ESSINGELEDEN

ÖRNSBERG

LURPARKEN

SJÖVIKSTORGET

ÄRSTA PARTIHALLEN  
SKROTUPPLAG







The lurs are extended from Lurparken to other places around Liljeholmen through a tube network

Sounds are transmitted to and from lurparken and the other sites in Liljeholmen

The interactive lurs allow children to gain access to spaces that are not child friendly and invite them to play!

The sounds from the different places allow children to imagine and experience places beyond their every day area.

The inaccessible sites that lack playfulness, suddenly have a direct connection to the reviving world of children's play





# AIM

Extending the “magic circle of play” to sites that are devoid of child-friendly features.

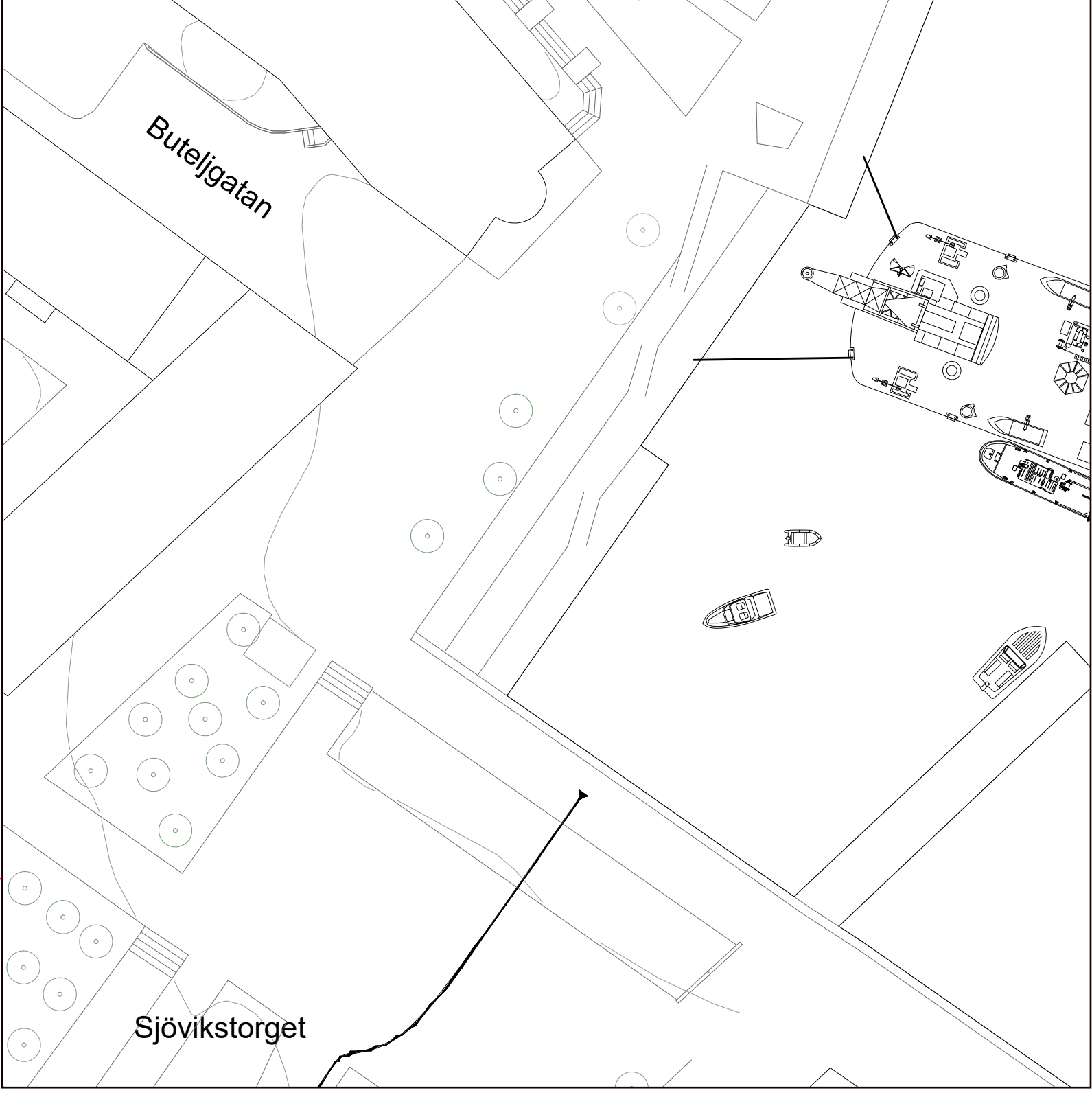




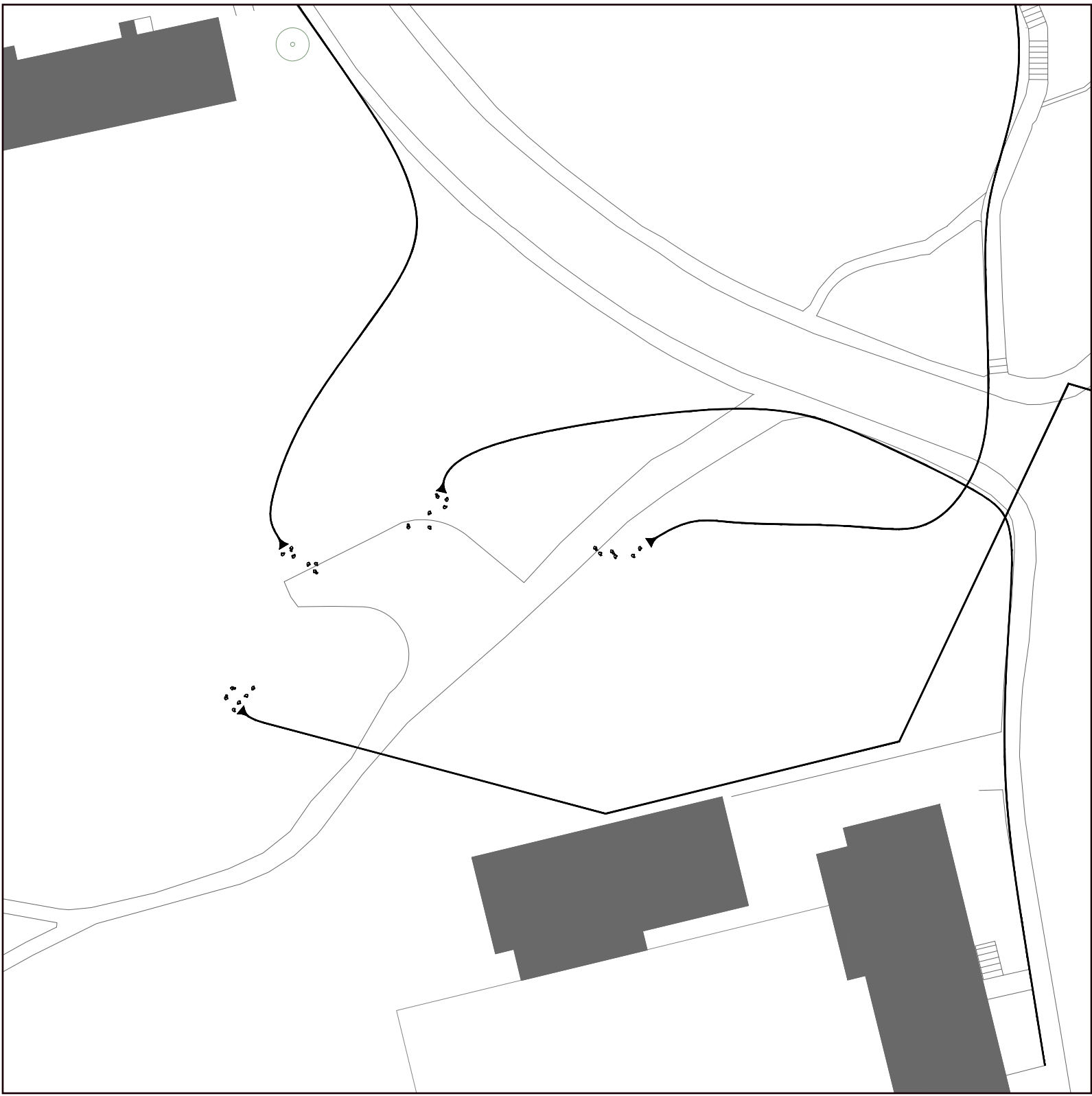
Essingeleden highway

danger  
magic circle

public space  
magic circle



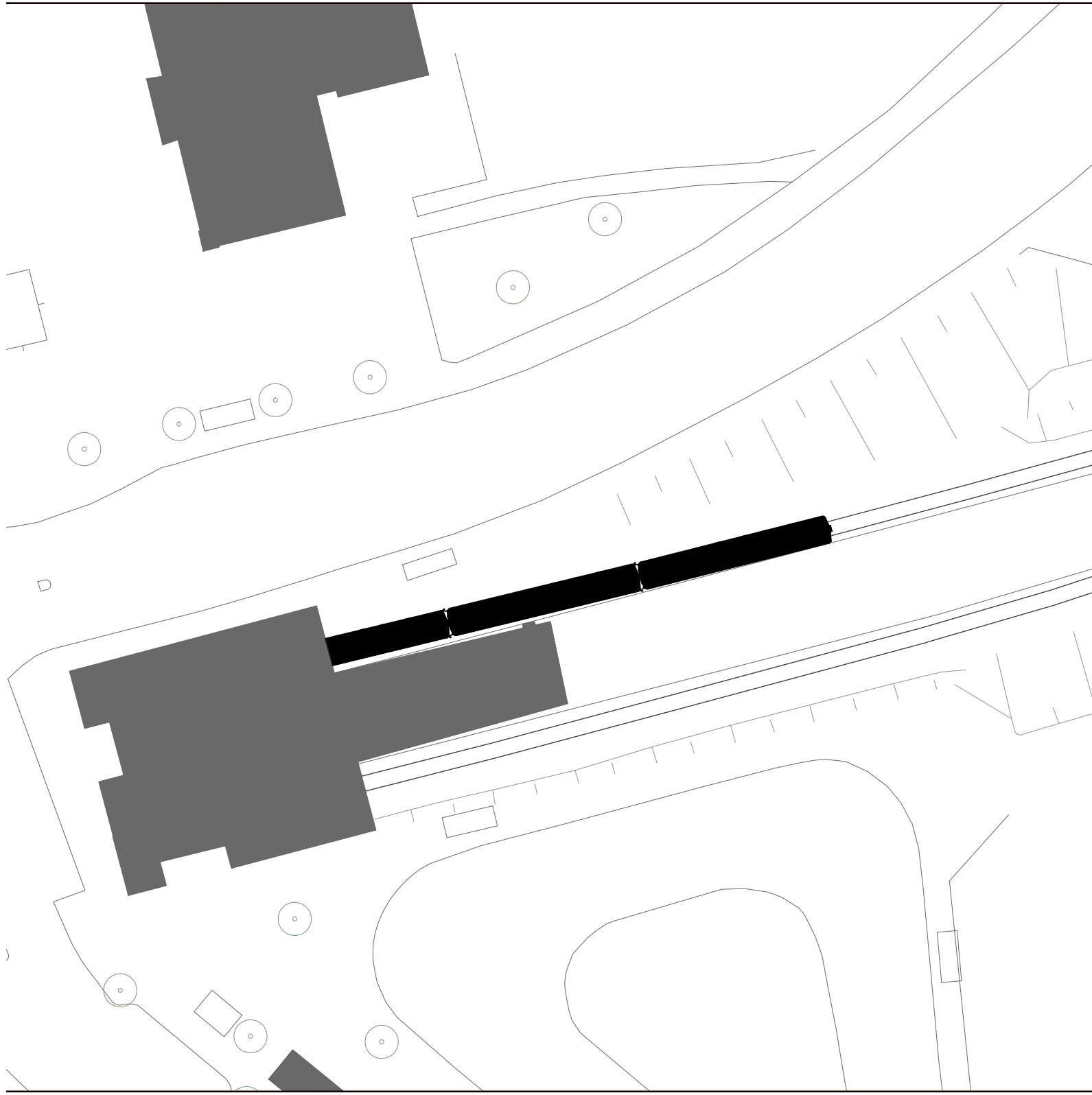
Sjövikstorget quay



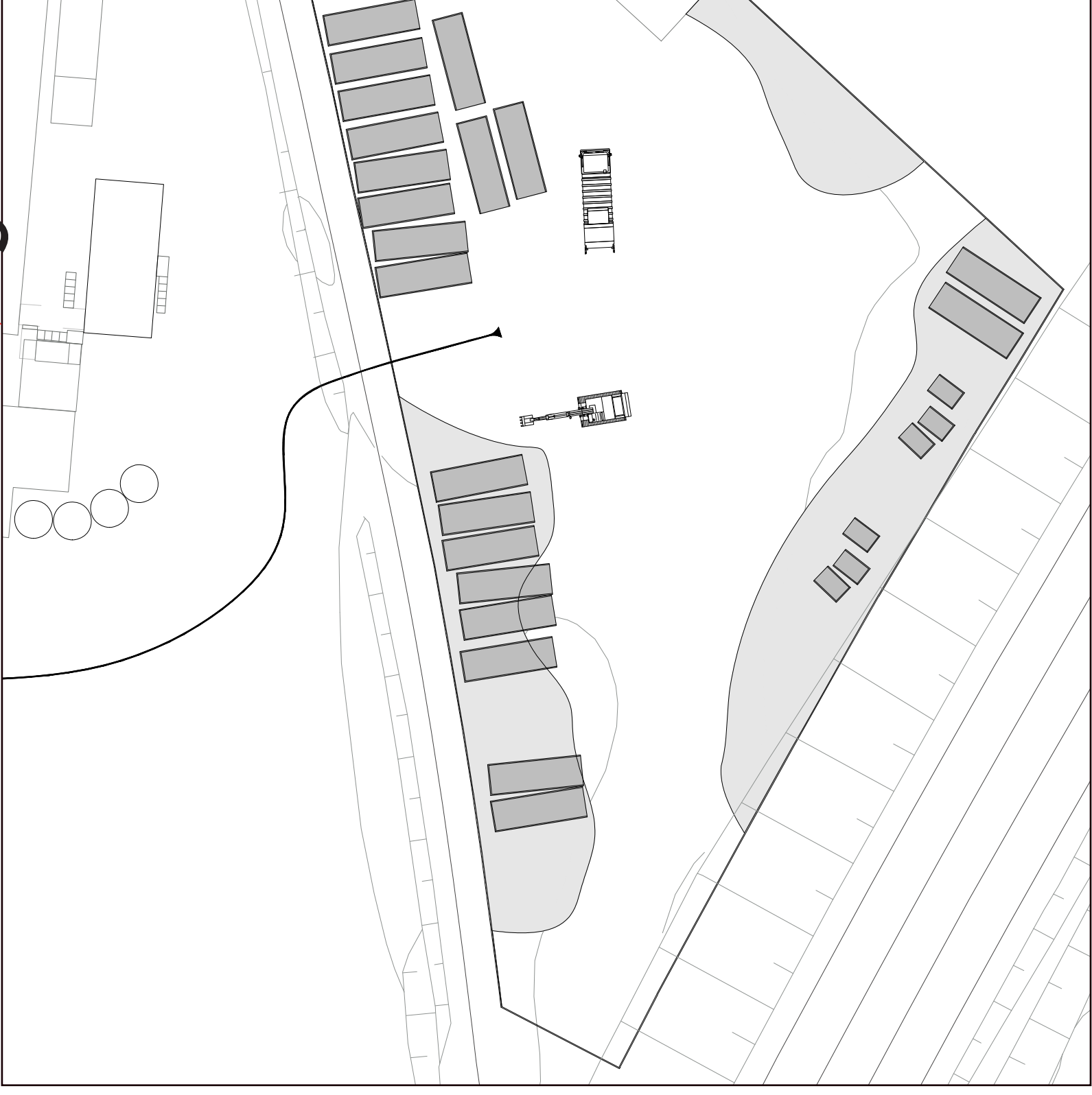
Lurparken playground

magic circle  
inaccessibility

magic circle  
danger



Örnberg's subway station



Årsta Partihallar scrapyard























# Impact Analysis

## ESSINGELEDEN

**Receives:**  
The physical structure acts as a manifestation of the kids inaccessibility to the city.

**Gives:**  
The automotive infrastructure is a cause of many of the global issues, and at the same time it is separated from the world of the children. The installation gives children knowledge about these fundamental problems.

## TUNNELBANA

**Receives:**  
A more enjoyable environment, in the form of life and subway art.

**Gives:**  
Children access and knowledge of this place beyond their everyday world. They get a chance to feel ownership of the city.

## SJÖVIKSTORGET

**Receives:**  
A more humane and inviting environment which makes is more enjoyable for people of all ages.

**Gives:**  
Children experience a public part of town which they do not have access to.

## SKROTUPPLAG

**Receives:**  
Reminder that children do not have access to these places.

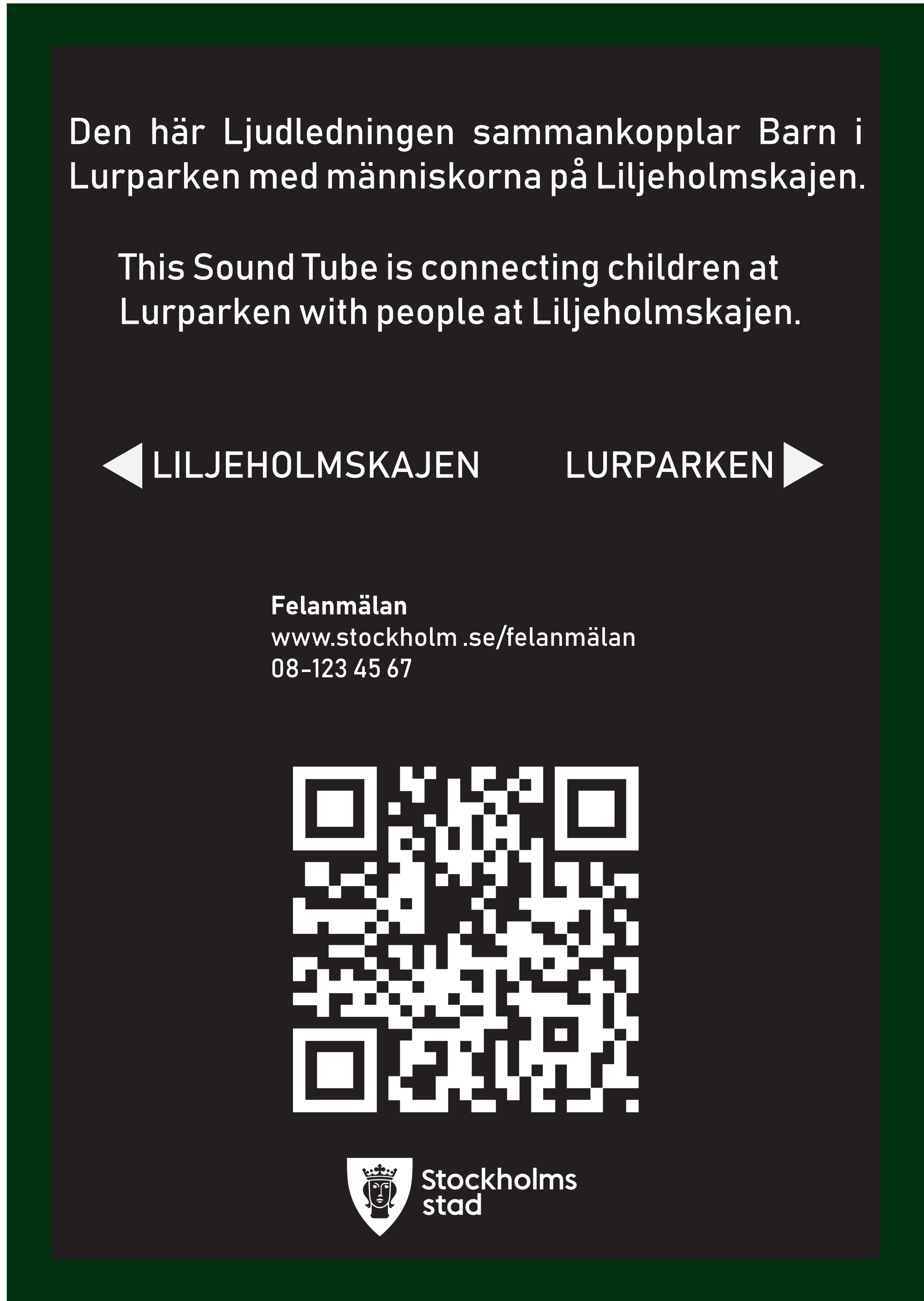
**Gives:**  
Children awareness about this hazardous place which is an inevitable part of society and our economy.



By strategically placing sound installations in the city, it becomes apparent how public space is inaccessible to children and how children have unequal rights of influencing the city.



# Communication Strategy



sign along tubes



radio broadcast



P1 morgon, broadcast