

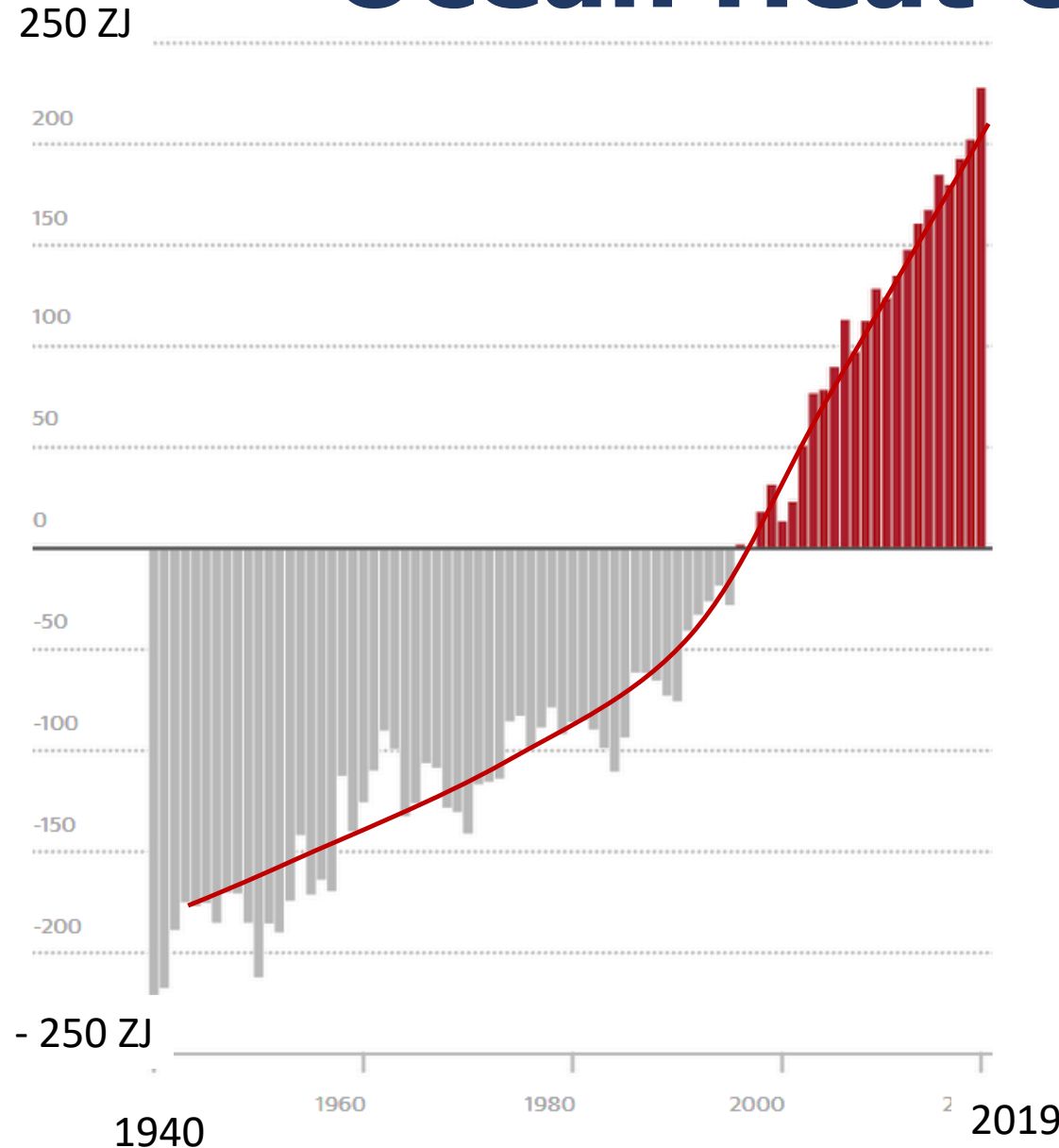


Climate Emergency

A Summary of 2019

- Met Office
 - Highest rainfall in 48hrs 250% of monthly av. (June – Lincs.)
 - Highest Feb. temperature 20.4°C - Manchester
 - Highest Dec. temperature 18.7°C – Sutherland
 - Highest recorded temperature 38.7°C - Cambridgeshire
- PHE Estimated 900 additional deaths due to summer heatwave
- Copernicus (EU weather service)
 - Globally – hottest decade since records began
 - Globally – 1.15°C above pre-industrial levels
- Globally – CO₂ reached 415 ppm – the highest for 3 million years

Ocean Heat Content



**90% of the heat trapped by
Greenhouse gasses are
absorbed by the Oceans**

**Because of its mass provides a
more reliable measure than air
temperature**

2019 warmest year yet by far

Guardian graphic. source: Cheng et al, Advances In Atmospheric Sciences, 2020. *One zettajoule = 1,000,000,000,000,000,000 joules

Source: Advances in Atmospheric Sciences

Whaley Bridge Dam



Widespread Failures



“Climate change risks are high to very high, with a global mean temperature increase of 4°C ... and include severe and widespread impacts on unique systems, substantial species extinction, and large risks to global and regional food security”

International Panel on Climate Change 2018

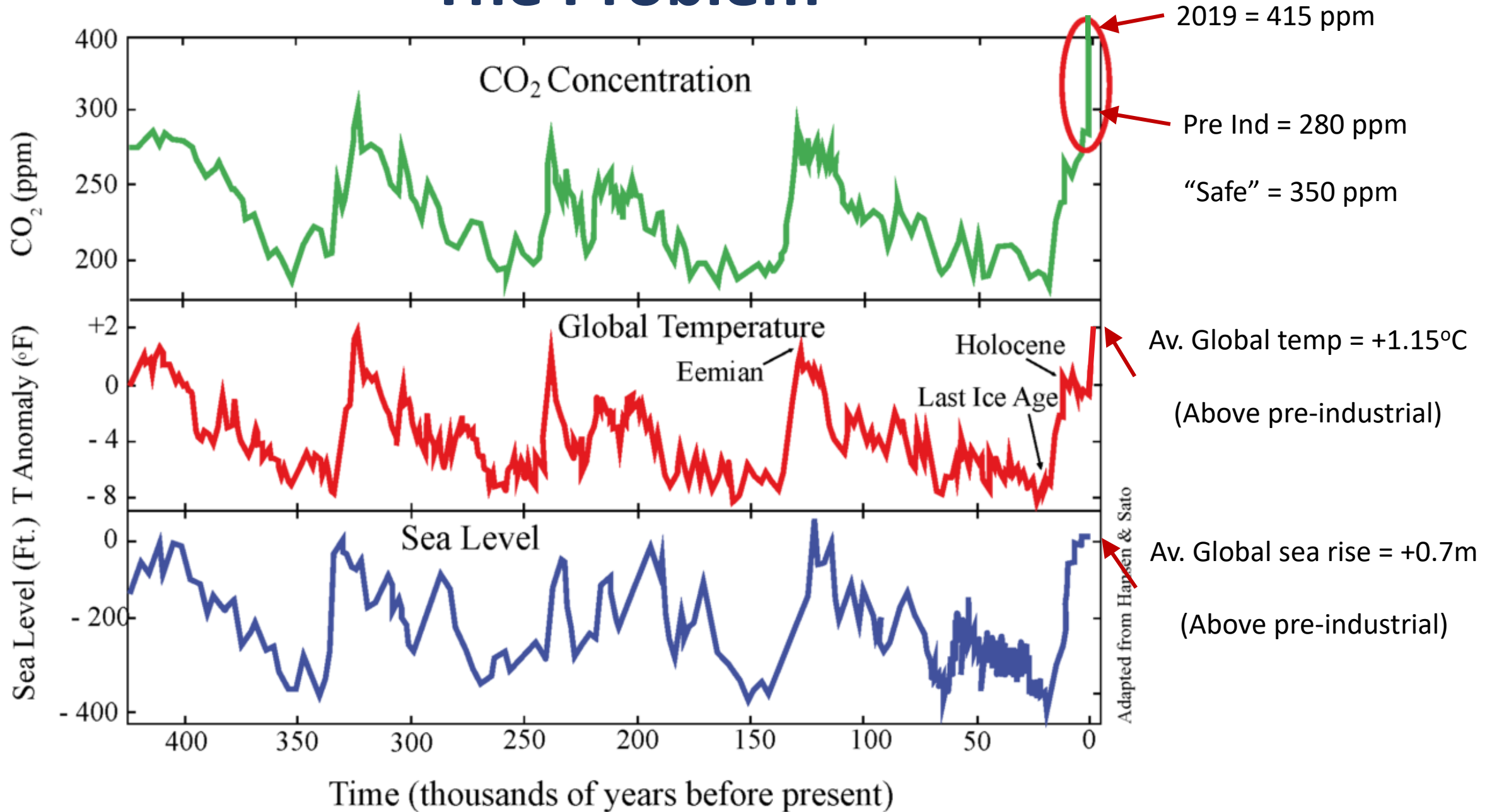
“The global financial system faces an existential threat from climate change and must take urgent steps to reform”

Mark Carney – Bank of England 2019

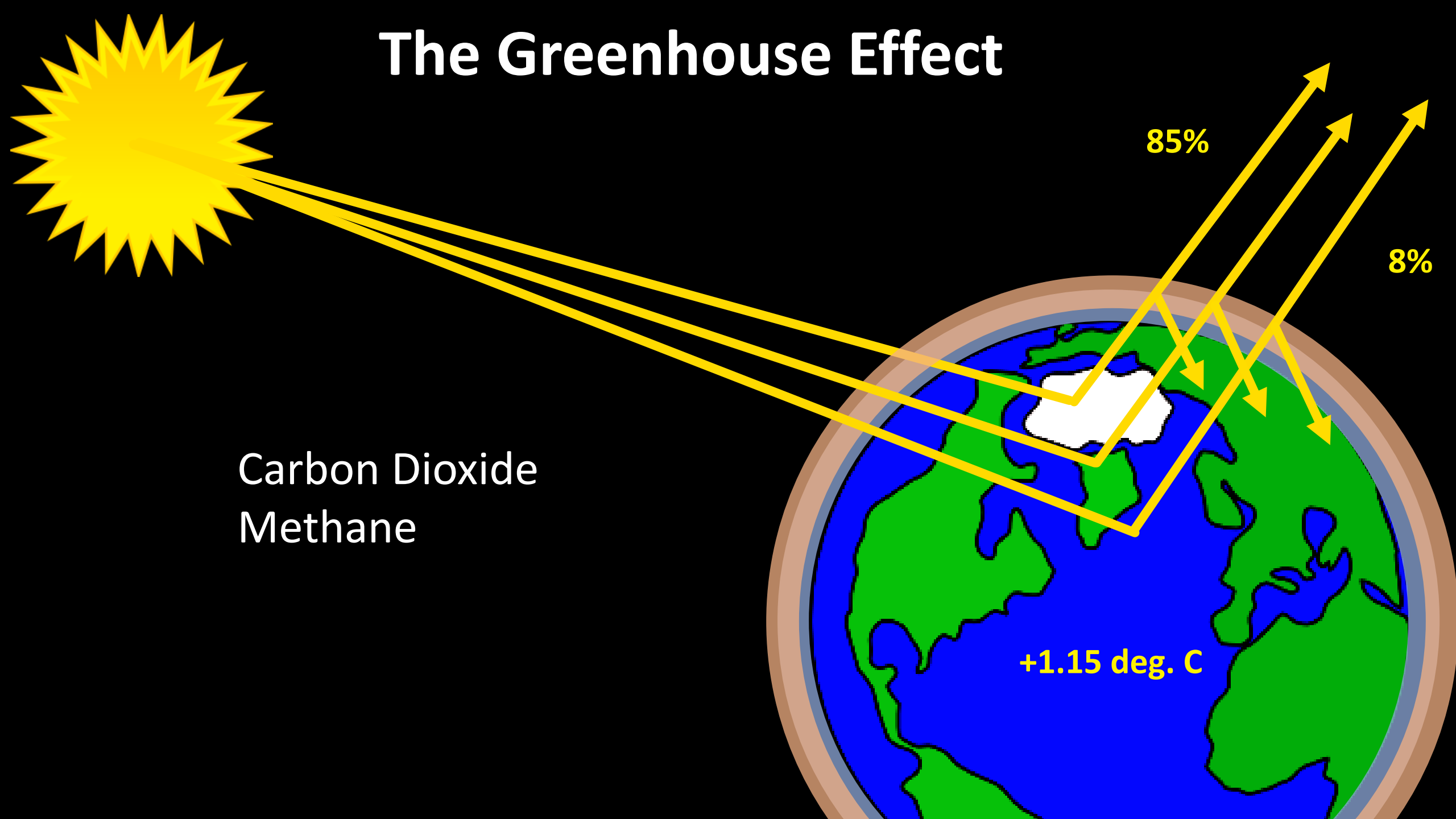
Simon Stevens, the chief executive of NHS England (21 Oct 2019)

“These new figures show air pollution is now causing thousands of strokes, cardiac arrests and asthma attacks, so it’s clear that the climate emergency is in fact also a health emergency”.

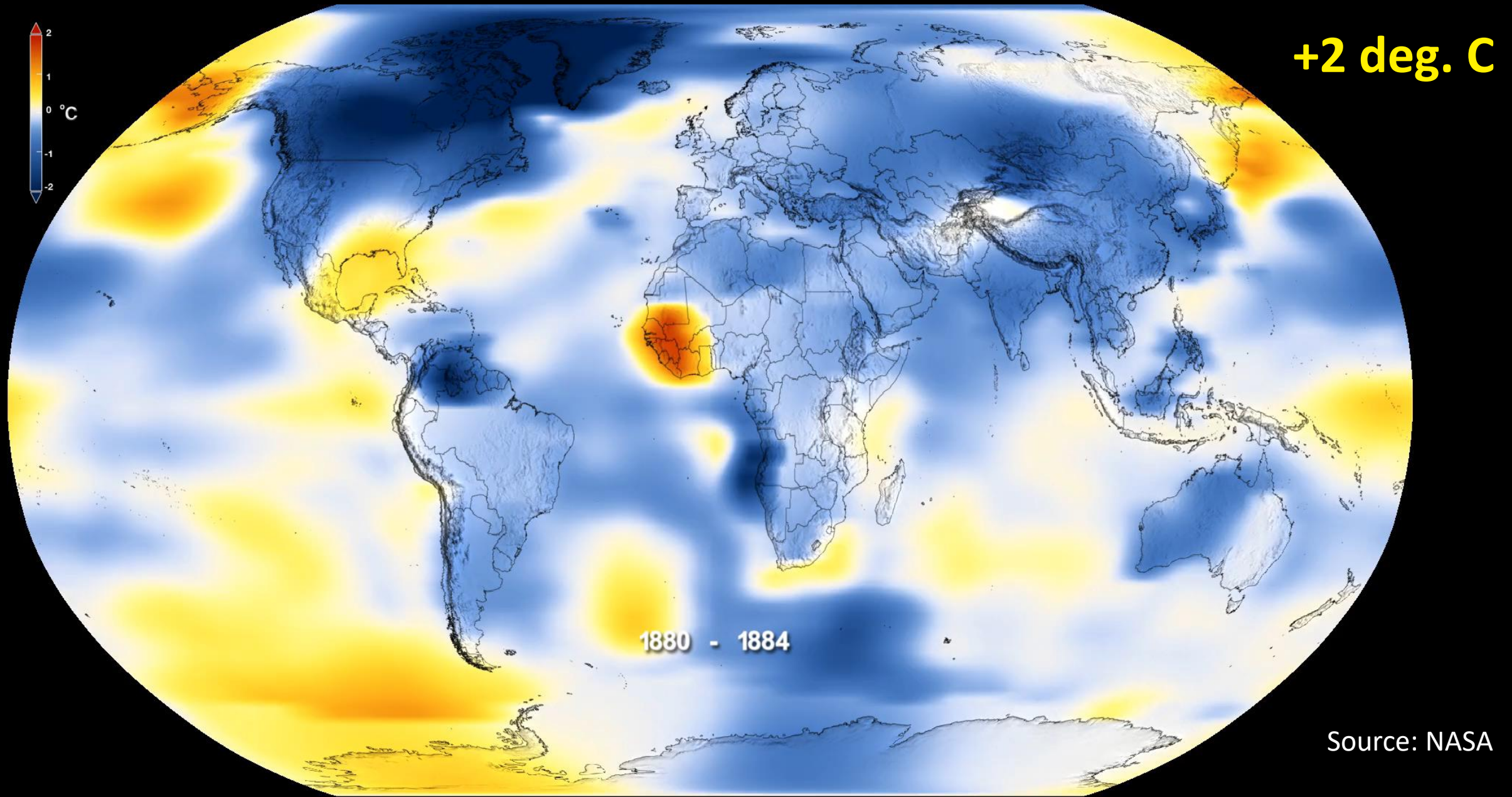
The Problem



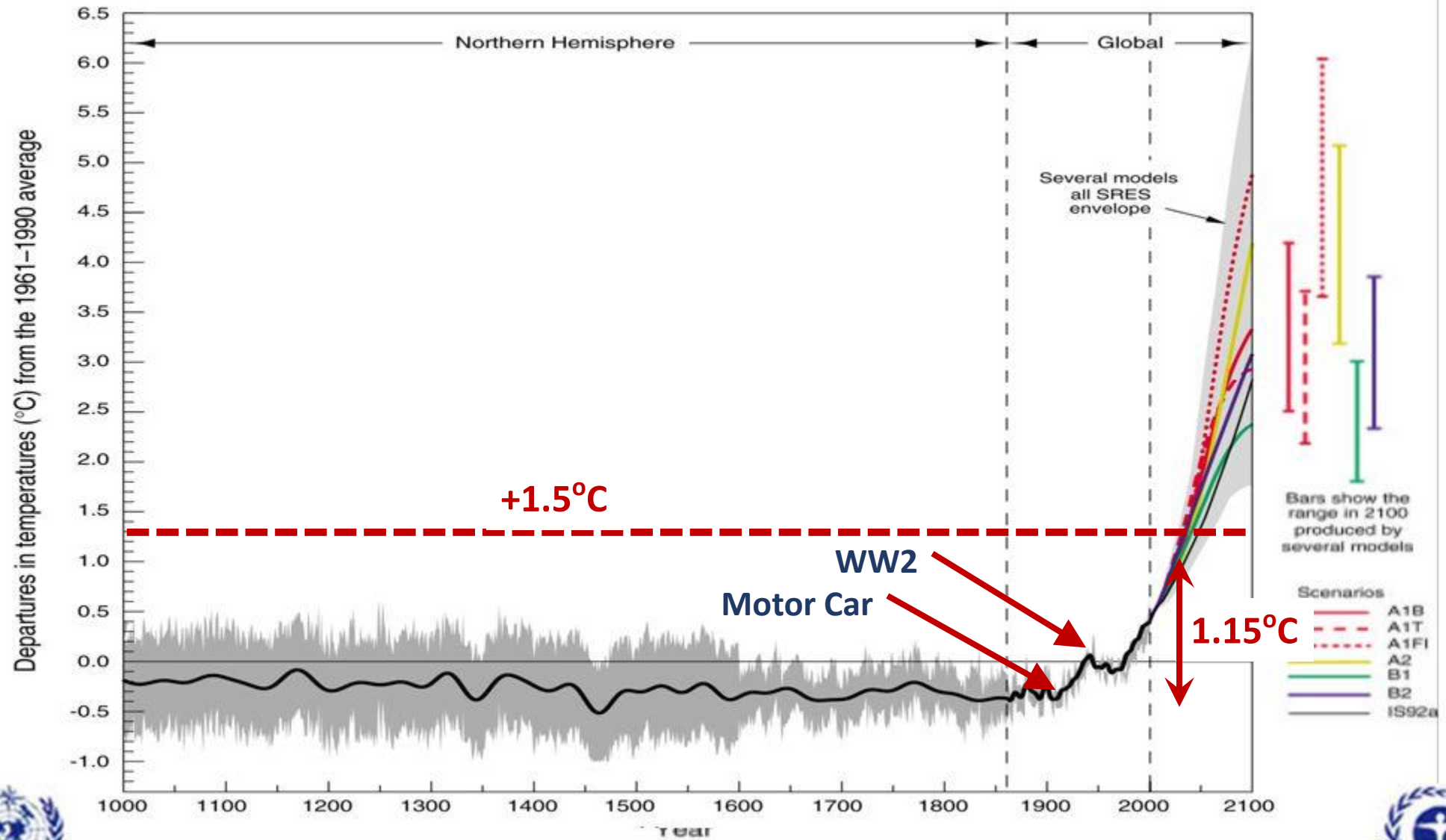
The Greenhouse Effect



Global Temperature Change 1880 to 2016



Global Mean Temperature Change

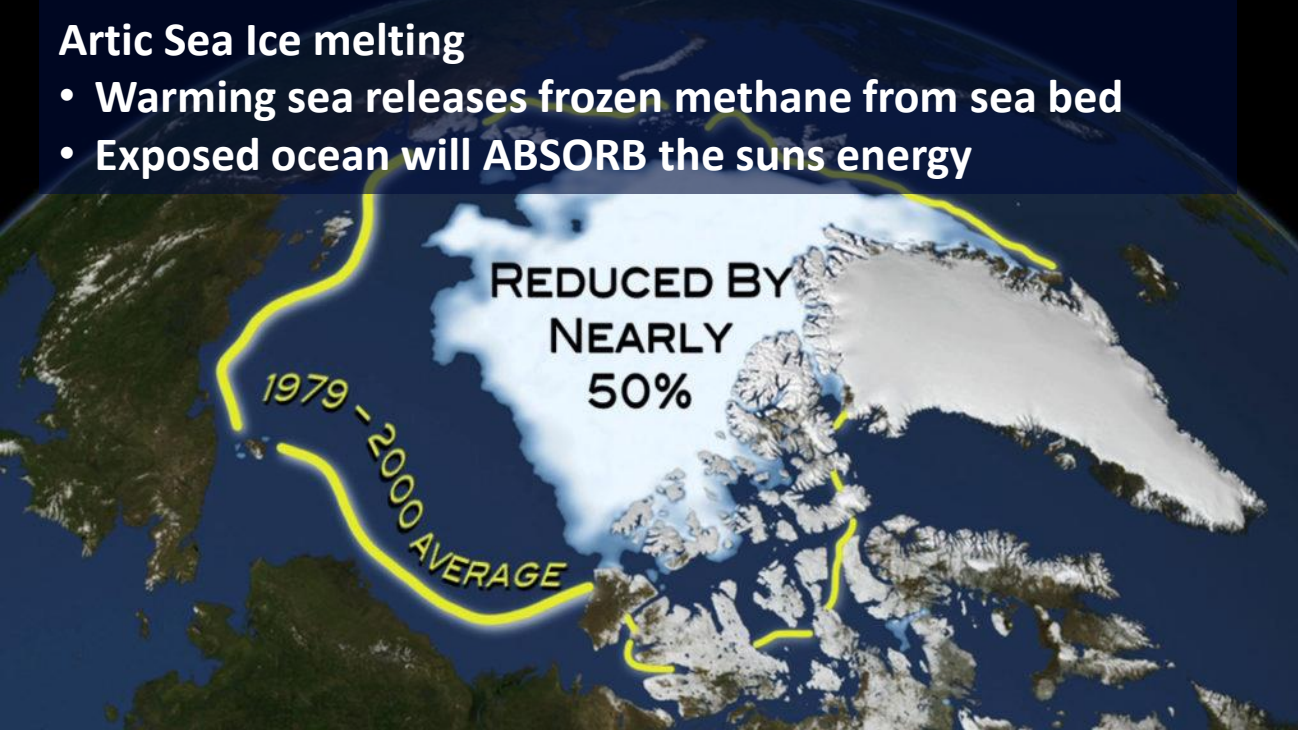


Why is a 1.5°C rise dangerous?

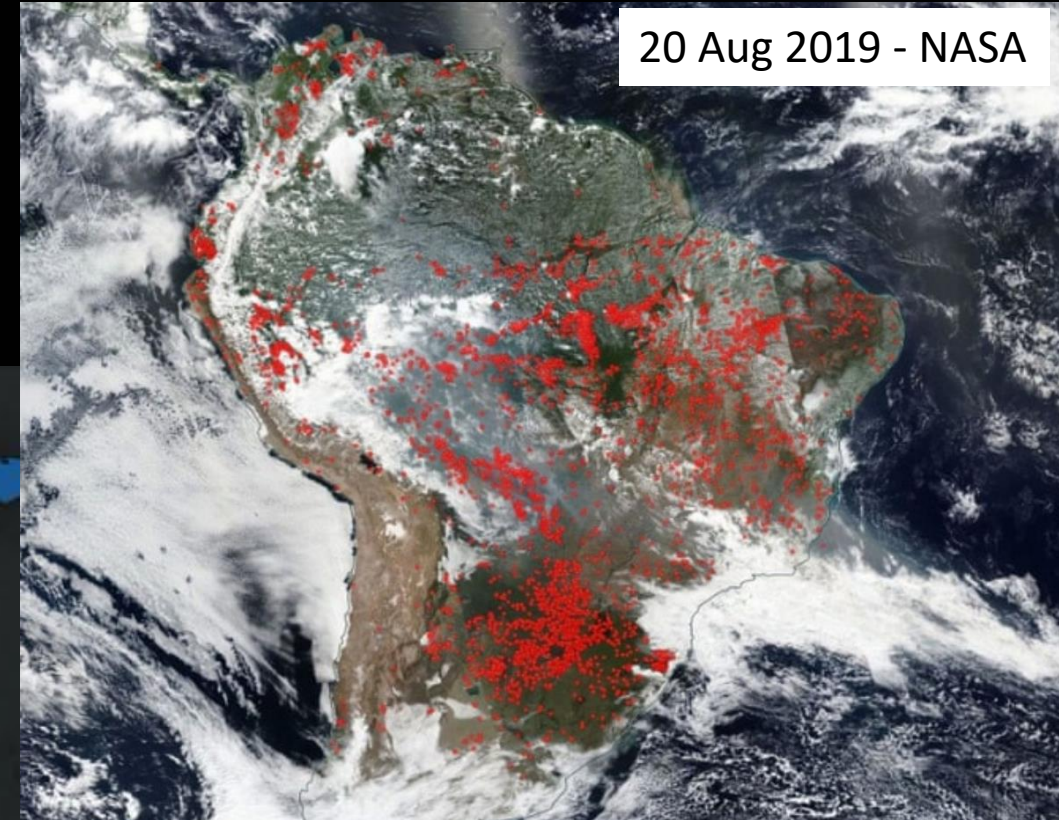
- “Tipping Points” accelerate change:
 - Ice Sheet melts - increased absorption of suns rays
 - Permafrost melts - releases CO₂ and methane (84 x CO₂)
 - Amazon rainforest collapses – biggest land sink of CO₂
- Becomes irreversible:
 - Accelerated loss of food production
 - Equatorial areas become uninhabitable
 - 1,000,000,000 refugees by 2050 (UN)
 - Knock on effects – migration, conflict (i.e. Syrian war)

Arctic Sea Ice melting

- Warming sea releases frozen methane from sea bed
- Exposed ocean will ABSORB the sun's energy



Tipping Points



Permafrost thawing

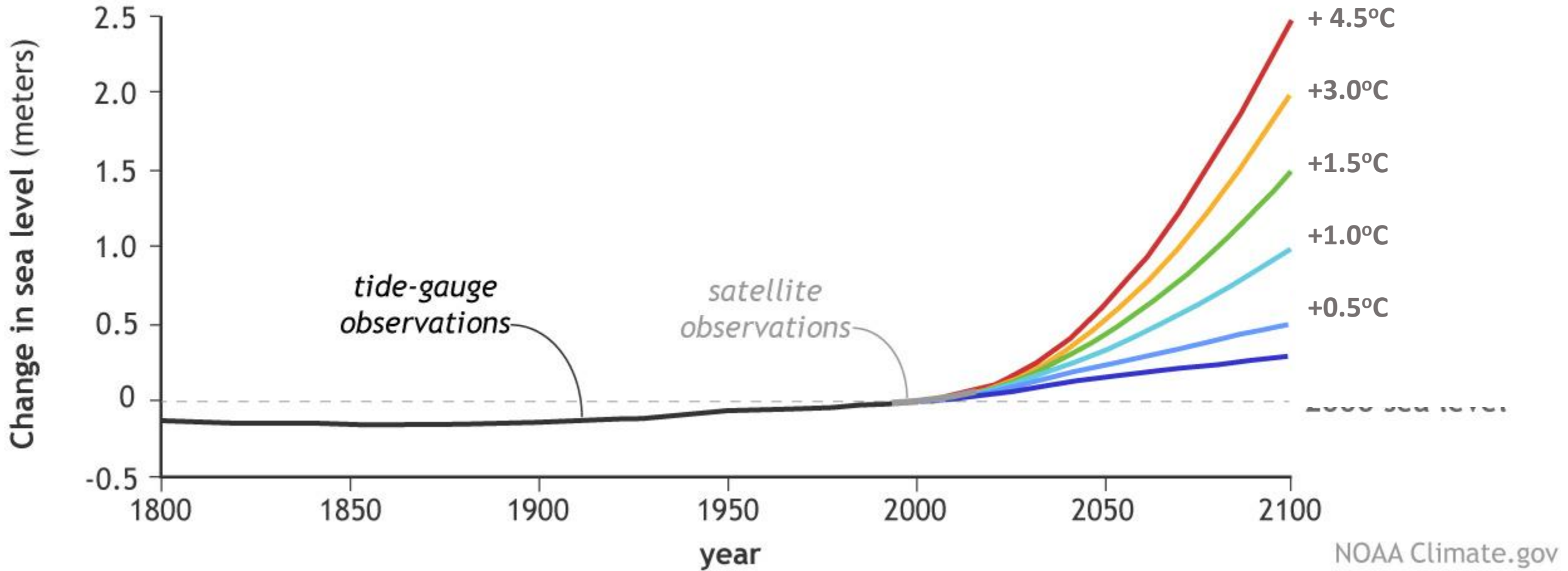
- Releases massive quantities of methane and CO₂
- Creates huge lakes which ABSORB sun's energy

Amazon Rainforest collapse

- The largest land absorber of CO₂
- Produces 20% of the world's Oxygen

Global Sea Level Rise

Possible future sea levels for different greenhouse gas pathways

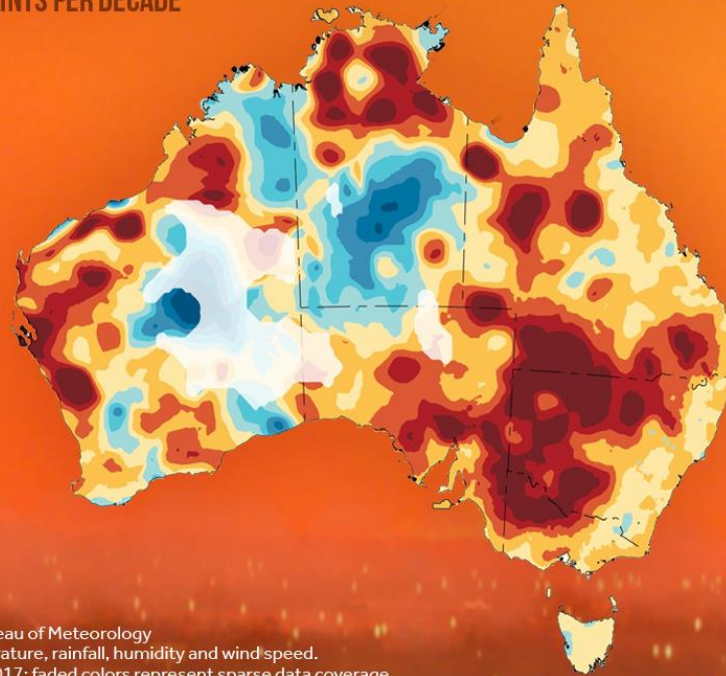


NOAA Climate.gov
Adapted from Sweet et al., 2017

National Oceanic and Atmospheric Administration

Impact

AUSTRALIA FIRE DANGER INDEX CHANGE IN FIRE WEATHER RISK



Source: Australian Bureau of Meteorology
Index based on temperature, rainfall, humidity and wind speed.
Trends from 1978 to 2017; faded colors represent sparse data coverage.
Positive (negative) numbers indicate increase (decrease) in length & intensity of fire weather season

CLIMATE  CENTRAL

Source: Australian Bureau of Meteorology

A man in a blue shirt and jeans is walking across a vast, cracked, dry landscape. The ground is a deep reddish-brown color, with deep, irregular cracks forming a mosaic pattern. In the background, there are rolling hills under a blue sky with scattered white clouds. The overall scene conveys a sense of drought and environmental hardship.

**Humanitarian disasters will rise to over
200 million people a year
Aid costs will rise to over £20b a year**

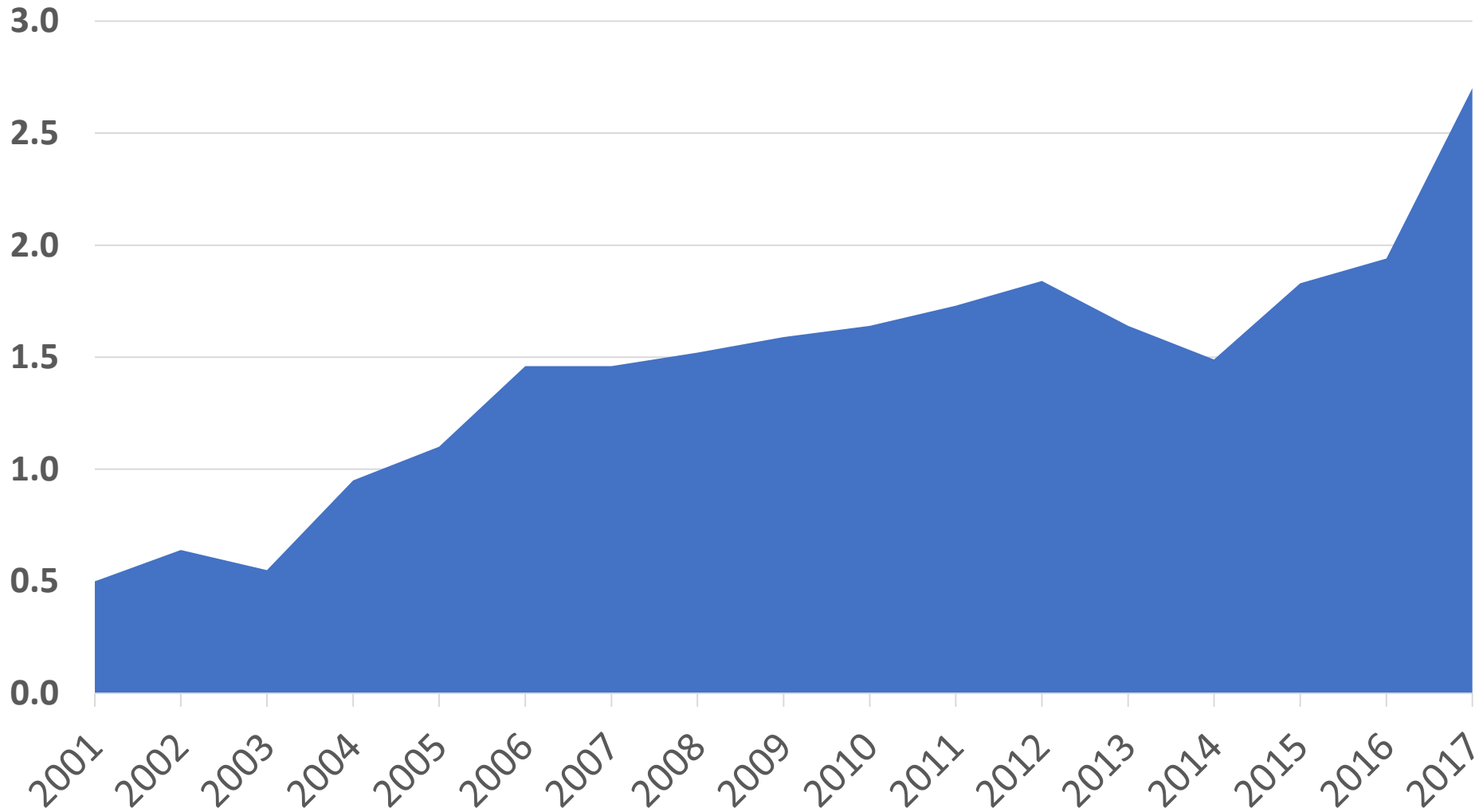
International Red Cross 2019

UK Climate Change Committee Identifies

| Risk | Impact by 2050 (in UK) |
|------------------------------------|---|
| to Health from high temperature | There are currently 2,000 deaths a year in the UK due to heat. This number will increase by 257%. |
| from Flooding | Fatality, accident and mental health (PTSD) will rise by 78%. |
| to Health and Social Care delivery | Hospitals at risk of flooding increases to 200. Care homes at risk of flooding increases to 1,454. |
| from Air Quality | Up to 9 million people suffer from asthma and COPD. Particulates (PM10, PM2.5) have a higher health risk at higher temperatures. More work is required to quantify. |
| from vector borne pathogens | Lyme Disease will increase. It is only a matter of time before infectious mosquitos reach the UK. |
| poor water quality | Outbreaks of cryptosporidiosis are linked to heavy rainfall. Harmful water phytoplankton is temperature related. |

Increase in temperature and humidity increases insect borne disease

Per 100,000 population England & Wales



Source: PHE

Particulates (Diesel)

Reducing a major contributor to climate change would dramatically reduce:

- 9,000,000 cases of asthma / COPD in the UK
- 40,000 deaths caused by air pollution in the UK every year





Displacement

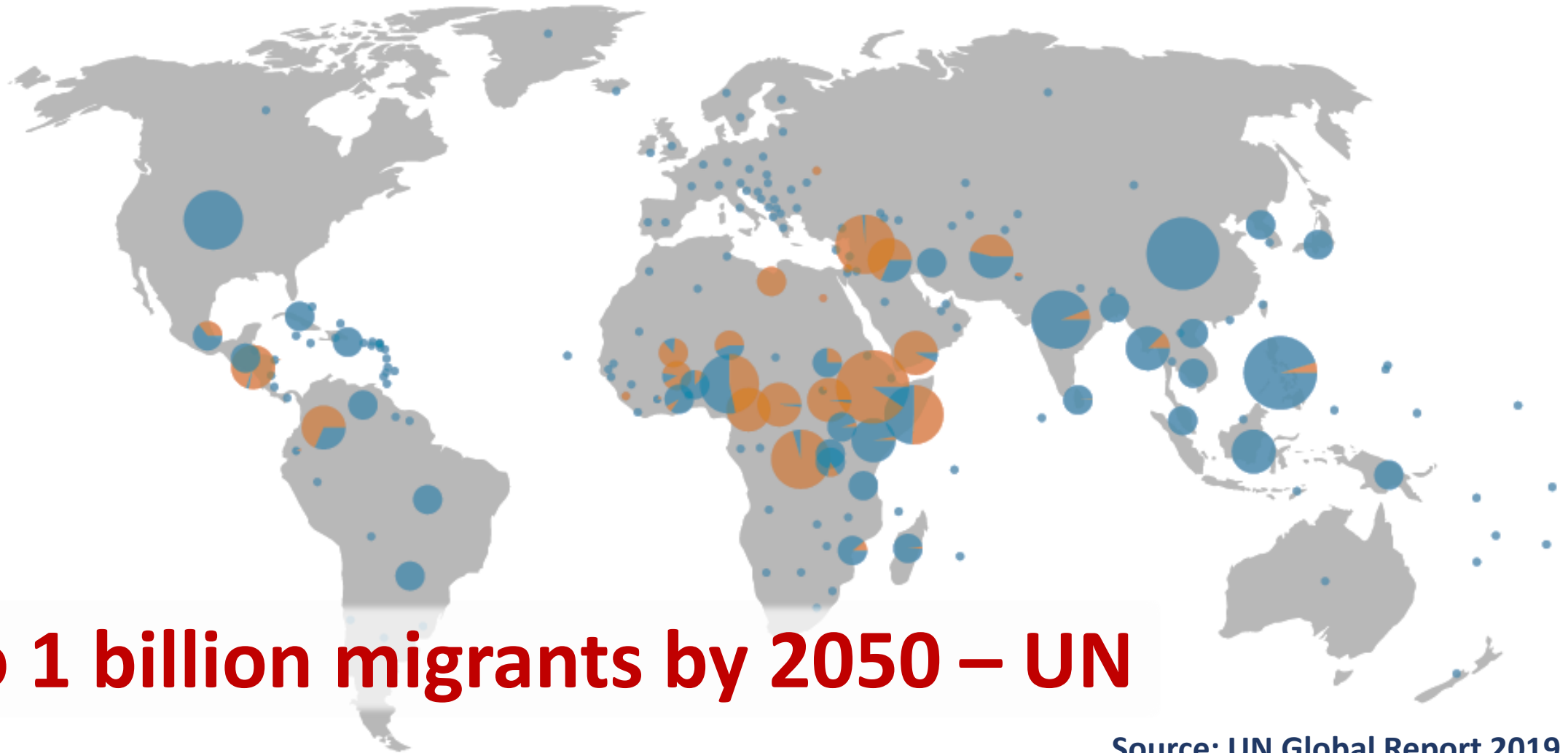
Displacement 2018

17,200,000 - Disasters

10,800,000 - Conflict

Conflict

Disasters



Up to 1 billion migrants by 2050 – UN

Source: UN Global Report 2019

What is the response?

- UK Climate Change Act 2008 provides for 80% CO₂ reduction by 2050
 - Reviewed and restated every five years by UK Committee on Climate Change
- Paris Climate Agreement (2016) committed all nations to:
 - Keeping a global temperature rise to below 2°C and pursue efforts to limit it to 1.5°C
- IPCC Report 2018 (International Panel on Climate Change)
 - We have until 2030 to halve our carbon emissions
 - We have until 2050 to cease / mitigate them altogether
- Theresa May Act - Jun 2019
 - 100% reduction by 2050
 - Excludes Shipping, Aviation, Imports and Permits “Carbon Credits”
- Currently Government is not taking enough action

Zero Carbon Target

The IPCC

- has set a target for the UK to be Zero-Carbon by 2045

The UK Government

- has set a target to be Zero-Carbon by 2050

Cheshire West and Chester Council

- has set a target to be Zero-Carbon by 2030

Cheshire West and Chester Council

- is asking all organisations to become Zero-Carbon before 2045

NHS

Generates 42.5 million tons of CO2 every year

This is 5.4% of the annual emissions for the UK

In addition 5% of all journeys are health related.

In total the NHS is responsible for 7% of UK annual emissions

- about **600,000** cases of asthma / COPD
- about **2,800** deaths

On 26 June 2019 BMA declared

“a climate emergency and campaign for carbon neutrality by 2030”

Carbon Awards

- Carbon Literacy rolled out to all staff 20 points
- Business purchases all energy from renewable sources 10 points
- Business promotes active travel for staff 10 points
- Low carbon working operational (electric vehicles/video conf.) 10 points
- Policies in place and working to reduce carbon in procurement 10 points
- For establishments with canteens, meat free three days a week 10 points
- Carbon Footprint measured, plan to be carbon neutral in place and monitored annually
2030 = 30 points, 2040 = 20 points, 2050 = 10 points

Gold award 90 or over points

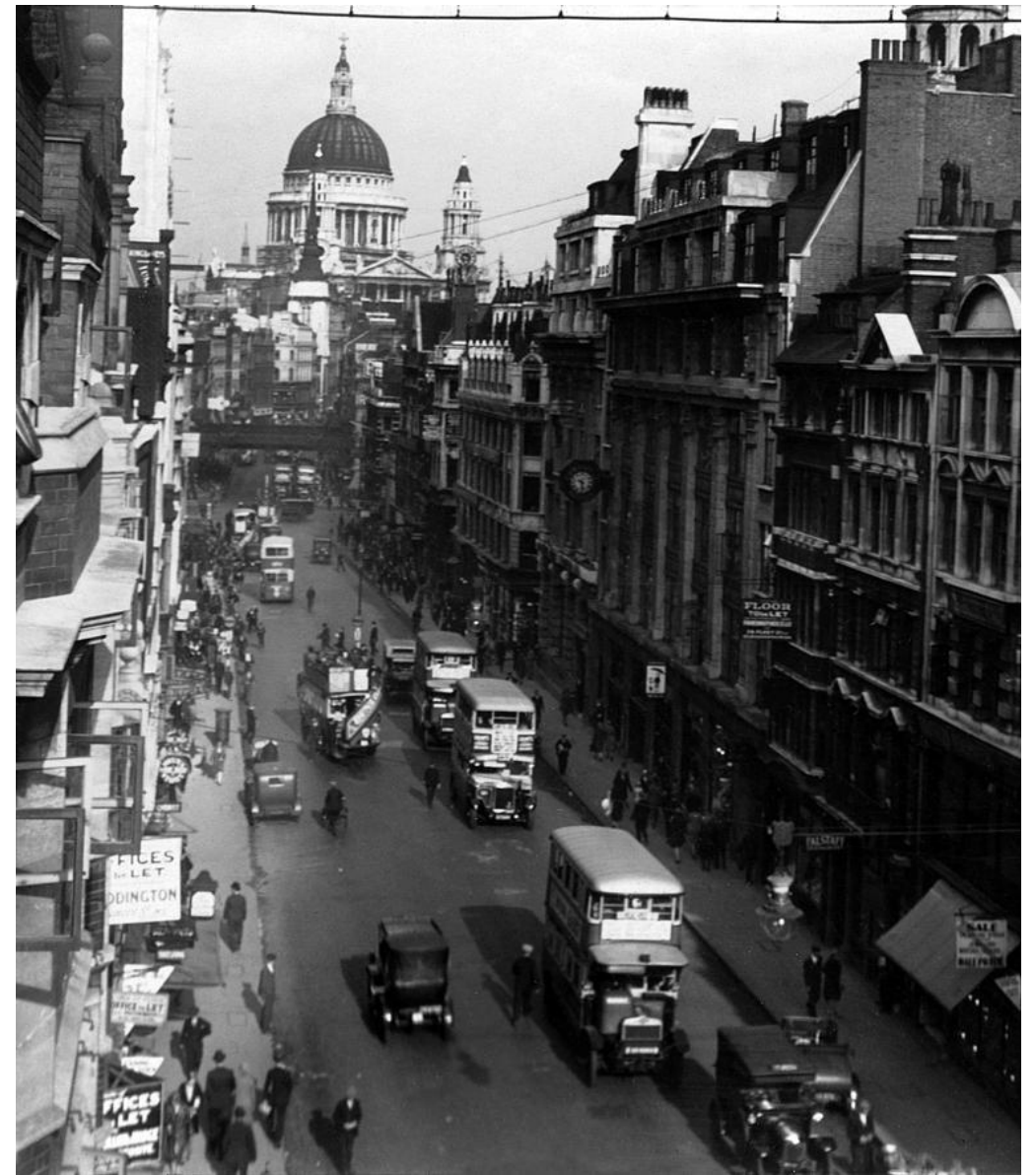
Silver award 60 or over points

Bronze award 30 or over points.

Change can happen



1905



1925

Greggs

Greggs to pay workers £7m bonus after vegan sausage roll success

Bakery chain's 25,000 employees will receive up to £300 in this month's pay packet

Sarah Butler

@whatbuttersaw

Wed 8 Jan 2020 08:12 GMT



3,071



▲ Greggs has more than 2,000 outlets around the UK. Photograph: Pat Tasso/Getty Images

Employees at Greggs are being rewarded with a £7m special bonus after the **hugely successful launch** of the bakery chain's **vegan sausage roll** last year boosted sales and profits.

Discussion / Actions



What can you organisation do?

- Nominate a Carbon Champion / Roll out Carbon Literacy
- Develop a plan to be carbon neutral ASAP before 2045
- Switch to a renewable energy supplier - QWest
- Develop and launch a carbon recognition scheme
- Engage and motivate your staff on the carbon challenge
- ??



Zero Carbon 2045
= 15% Carbon reduction every year



CLIMATE SUMMIT

WHAT IF IT'S
A BIG HOAX AND
WE CREATE A BETTER
WORLD FOR NOTHING?

- ENERGY INDEPENDENCE
- PRESERVE RAINFORESTS
- SUSTAINABILITY
- GREEN JOBS
- LIVABLE CITIES
- RENEWABLES
- CLEAN WATER, AIR
- HEALTHY CHILDREN
- ETC. ETC.



10/19 USA TODAY
DEL PITT

Carbon Literacy

SIEMENS

THE **PEEL** GROUP

NHS

patagonia

 **Manchester
Metropolitan
University**

itv

I.C.L.E.I
Local
Governments
for Sustainability

 **Keep Scotland
Beautiful**

GMCA GREATER
MANCHESTER
COMBINED
AUTHORITY

JACOBS

B B C

 **BAFTA**

 **Anthesis**

 **GallifordTry**


Department for
Business, Energy
& Industrial Strategy

General Resources

- International Panel on Climate Change [IPCC](#)
- Climate Change Committee [CCC](#)
- NASA / NOAA [NASA](#) [NOAA](#)
- Tyndall Centre [Tyndall Centre](#)
- Climate Central [Climate Central](#)
- Carbon Brief [Carbon Brief](#)
- Greenpeace [Greenpeace](#)
- World Wildlife Fund [WWF](#)

Technical Resources

- Climate Change [The Climate Group](#)
- Renewable Energy [RE100](#)
- Carbon Footprinting [Greenstone](#)
[GHG Protocol](#)
[Scatter](#)
- Climate Change Training [Carbon Literacy Training](#)

BEIS / DEFRA: Guidance on how to measure and report Greenhouse Gas Emissions

| Emission-releasing activity | Source of information |
|-------------------------------------|---|
| Electricity use | Total kilowatt hours used from electricity bills |
| Natural gas use | Total kilowatt hours used from gas bills |
| Water supply | Total water supplied in cubic metres (m ³) from water bill |
| Water treatment | Total water treated in cubic metres (m ³) from water bill |
| Fuel used in company owned vehicles | Litres of fuel purchased from invoices and receipts (more accurate); or Vehicle mileage from vehicle log books/odometers (less accurate) |
| Employee passenger travel | Employee receipts for details of travel, and Use distance calculation websites to obtain flight, rail and road distances |
| Waste disposal/recycling | Tonnes of waste-to-landfill and recycled from waste collection provider |

?

• ?