

About Danish cavalry 1932-1940, Part 2 - Supplement

The motorcycle squadron

The motorcycle squadron was organized as follows:

- Staff
- Command Platoon (Command Group and Liaison Group) 4 Motorcyclist
- Platoons (Platoon Platoon and 3 Groups) 1 Motorcycle Gun Platoon
- (Platoon Platoon, 4 Motorcycle Gun Groups and 1 Ammunition Group)
- Train (fencing and baggage training)

Staff

Staff Squadron Leader 1 1 small passenger car and 1
observer 1 motor motorcycle with sidecar 1) —
vehicle driver
Command officer 1
motorcycle driver

Deputy commander 1 motorcycle with sidecar 1 observer
1 motorcycle driver

1 1 motorcycle with sidecar
doctor 1 canteen
soldier 1 motorcycle driver

In the following overviews, the motorcycle crews are listed in the following order: the sidecar man, the back seat man and the motorcycle driver, which was the practice line-up. During the transition to the war march, some of the personnel changed places, see later under *Combat*.

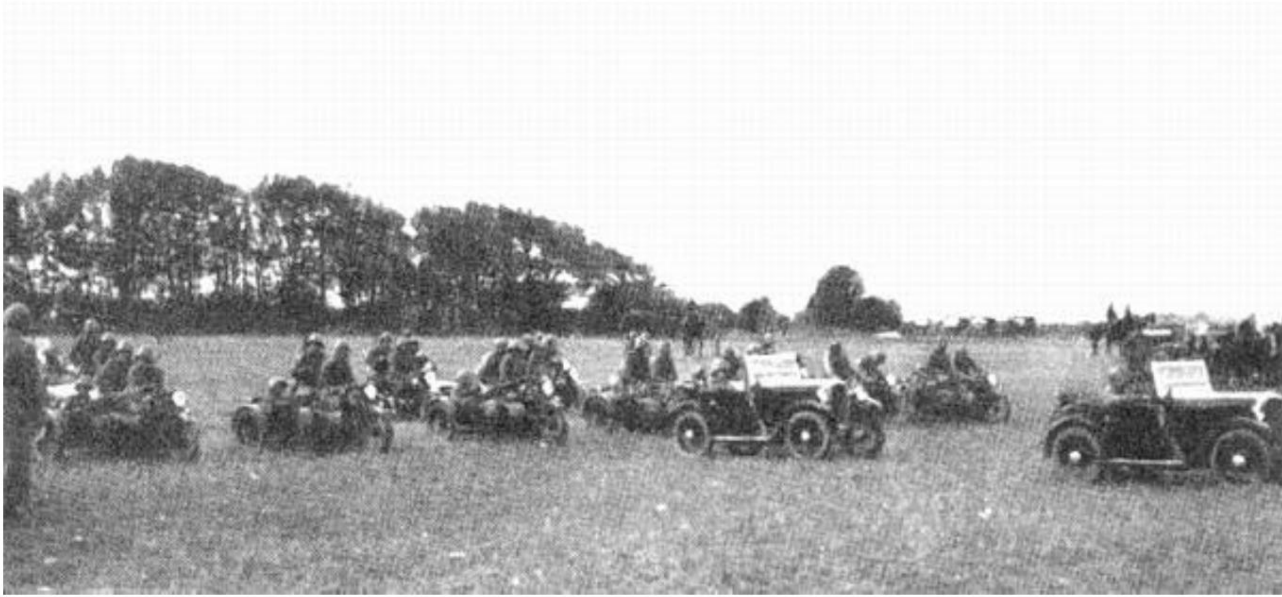
Command sharing

The command group 1 platoon leader 1 1 motorcycle with sidecar
observer 1
motorcycle driver

2 motorcycle ordinances (no. 1 and no. 2) 2 solo motorcycles

Liaison group 1 group leader 7 liaison
 people 4 motorcycle
 drivers

4 motorcycles with sidecars



Motorcyclists from the Guard Hussar Regiment, approx. 1937.
 From Source 2.

Motorcyclist divisions

The platoon troops 1 platoon leader
 1 ranger 1
 motorcycle driver

1 motorcycle with sidecar

1 second-in-command 1
 foot orderly 1 motorcycle
 driver

1 motorcycle with sidecar

2 division ordinances (No. 1 and No. 2) 2 solo motorcycles

The groups 1 group driver
 1 tripod carrier 1
 motorcycle driver

1 motorcycle with sidecar (group
 leader machine)

1 tripod shooter
 1 motorcycle rider

1 motorcycle with sidecar
 (shooting machine)

1 supplies 1
 1 motorcycle driver

1 motorcycle with sidecar (supply
 machine)

1 helper

1 motorcycle with sidecar

1 supplies 2

(order machine)

1 ordinance (motorcycle driver)



Motorcyclist group from the Gardehusar regiment.

From Source 3.

Motorcycle gun division

The platoon

1 platoon driver
1 ranger 1
motorcycle driver

1 motorcycle with sidecar

1 second-in-command 1
carbine gunner 1
motorcycle driver

1 motorcycle with sidecar

The groups

1 squad leader
1 carbine gunner
1 motorcycle driver

1 motorcycle with sidecar

1 gunner 1
helper (motorcycle driver)

1 cannon motorcycle

1 supplies 1 1 ammunition motorcycle 1 supplies 2 (motorcycle rider)

The ammunition group 4 suppliers 4
motorcycle drivers

4 motorcycles with ammunition sidecars



20 mm machine gun M.1938 - Ready to fire, with the mount on the motorcycle 2). —

On command *Armored vehicles right now! Ready to shoot!* the helper drives the motorcycle to the place from which the shooting is best done (usually on the left side of the road), positions it so that the rough side direction is given, stops the engine and brakes the handlebar firmly. He then supports the sidecar during shooting by holding the screen (light bracket) and by supporting under the wheel with his right foot... Thus, according to Source 1 and in the photo, the situation is clearly demonstrated.

Motorcyklisteskadronen, jf. Reglement for Rytteriet, 1938	Sidevognsmaskine	Solomotorcykel	Kanonmotorcykel	Ammunitionsmotorcykel	Personvogne	Lastvogne	I alt
Stab	3				1		4
Komm anddeling	5	2					7
1. Motorcyklistdeling	14	2					16
2. Motorcyklistdeling	14	2					16
3. Motorcyklistdeling	14	2					16
4. Motorcyklistdeling	14	2					16
Motorcykelkanondeling	6		4	8			18
Træn						8	8
Motorcyklisteskadronen i alt	70	10	4	8	1	8	101

Motor vehicles by a cyclist squadron, 1938.

train

The 8 trucks in the squadron's tree were as follows:

Workshop trolley
Fencing trolley
Ammunition trolley
Petrol trolley Medical
trolley Kitchen trolley
Luggage trolley No. 1
Luggage trolley No. 2

Match

War march

During wartime, some of the personnel had other positions from which they could best carry out their tasks.

In the platoon troops, the platoon leader and second-in-command took a seat on the back seat of their motorbikes, while the ranger and the foot orderly sat in the sidecars.

In the motorcyclist groups, the group leader took a seat in the back seat, while the tripod carrier sat in the sidecar.

The assistant took a seat in the back seat of the shuttle machine; feeder 2 sat in the back of the feeder machine. According to this arrangement, the motorcycles in the photo of the motorcycle group from the Guards Hussar Regiment can thus be identified as: squad leader machine, gunner machine, supply machine and orderly machine.

In other groups, the group leader, as well as the squadron commander and second-in-command, changed places correspondingly with the man in the back seat.

On foot

On foot, the motorcyclists work according to the same principles as the pedestrians, but often have, in view of the means of transport, a limited strength. However, it is worth remembering that the recoil rifles are all equipped with recoil rifle feet, which allows for effective fire.

With regard to the means of transport, the motorcyclist squadrons operated with movable and immovable motorcycles, corresponding to the equestrian squadrons' hand horses and the cyclist squadrons' hand bicycles.

Should the motorcycles be movable, the motorcycle riders remained with the motorcycles. If the motorbikes were immovable, they were left in hiding as far as possible, especially pilot shelters, guarded by the driver of the group leader machine. In a platoon framework, the second-in-command, or another designated commander, was in command of the mobile motorcycles, while only the driver of the platoon leader's machine remained to guard the immovable motorcycles.

Among other things, the commanding officer on duty was responsible for arranging the motorcycles so that they could easily get away, as well as in hiding and cover. He was also responsible for guarding and the ammunition service.

The ammunition service [3](#)) functioned in such a way that 1 man from each group - on a signal or order - was sent forward with 2 ammunition bags, which were exchanged for empty ones. In line with consumption, he was also to arrange resupply at the squadron's fencing wagon or ammunition wagon; if this was not possible, he was to report the consumption of ammunition to the squadron, so that a supply of ammunition could be sent forward by the squadron's arrangement.

In the squadron staff, the command officer, unless otherwise ordered, has similar tasks as the commander on duty in the platoons. To assist him, he has the commanders and privates who are

left by the vehicles.

Sources

1. *The motorcyclist squadron, Regulations for the Cavalry*, Ministry of War, Copenhagen 1938.
2. *Gardehusarkasernen on 29 August 1943* by Anders D. Henriksen, Forlaget Devantier, Næstved 1993, ISBN 87-984530-0-9.
3. *The Guards Hussar Regiment 1912-1937, with a summary of the regiment's history from 1762-1912* by Colonel Alf Giersing, The Hoffenberg Establishment, Copenhagen 1937.
4. *Field equipment for Individuals*, Ministry of War, Copenhagen 1936, with correction sheets up to August 1941.

Per Finsted

Notes:

- 1) During the war march, the squadron commander uses a motorcycle with a sidecar (together with the observer), while the command officer in the passenger car leads the fencing drill.
- 2) From the booklet *9 April in pictures*, Poul Branners Forlag, Copenhagen 1940. The picture is described as taken on the morning of 9 April 1940. Compared to other pictures taken by Th. Christensen, Aabenraa, this morning, the two soldiers do not wear cloaks and their motorcycles bear number plates from 6 respectively. Regiment (in the series 26,000-26,999) and the Infantry Scout Command (in the series 39,000-39,999). The license plate 344 shown here is from the Training Department, and is also the same machine gun motorcycle as shown in Part 2.
- 3) There are 4 units for the shooting machine, supply machine and ordinance machine. 10-magazine pouches; for the group leader machine 2 pcs. Of this ammunition, only the gunner's and supply machine's bags are normally carried in the group, while the other 6 bags are carried on the squadron's fencing vehicle, from where they are usually handed out when combat is imminent or when forces are detached from the squadron. The bags on the supply wagon can also be exchanged during or after combat for bags containing empty magazines. In addition, the tripod shooter carries 1 pc. 2-magazine bag and get 1 more. from the fencing carriage when combat is imminent. This gives the motorcyclist group a total of 124 magazines of 20 cartridges each.