



LIVE-IN CARE



QUALITY CARE AND SUPPORT SERVICES YOU CAN TRUST.



About Company

In 2020, Casbens Supported Living Community And Home Support Ltd was set up to help and care for service users who were 18 years old or older.

Casbens Supported Living Community And Home Support Ltd engages employees with the required skills, expertise, and certifications to provide services to clients with a wide range of support and care requirements, such as learning disabilities, autism, and mental illness.



We are devoted to the highest standards and quality of care, with delivery based on a multidisciplinary approach, with you and those important to you at the centre. We are especially devoted to the promotion of good lifestyles for individuals so that they can live the greatest possible existence within the community.

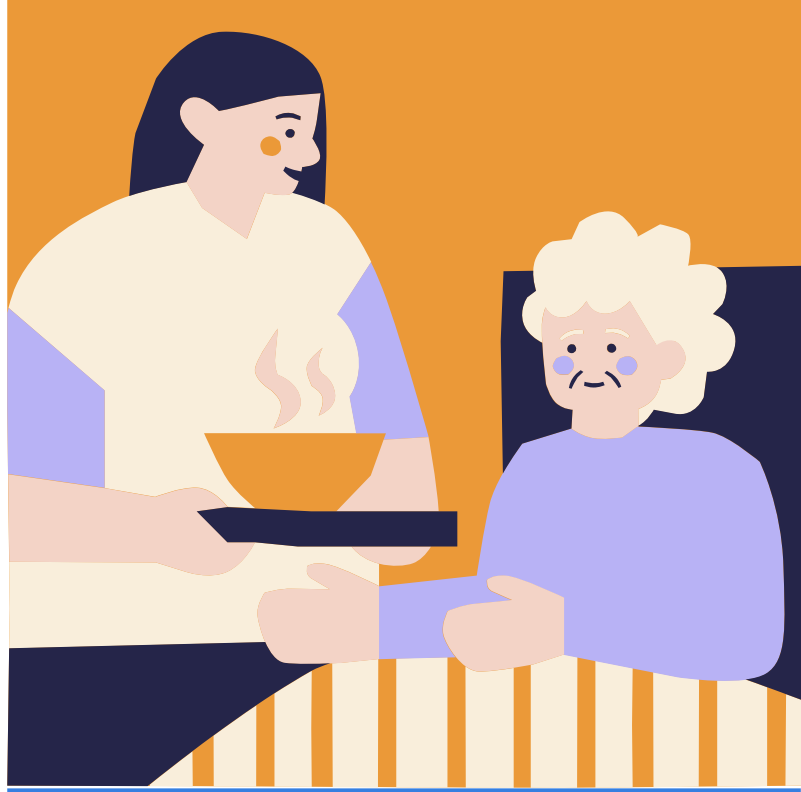
Our care team offers a degree of quality and attention to your requirements that will result in quality recognition. Furthermore, all of our managers/team leaders have nursing and/or vocational credentials, as well as significant extra expertise in assisting people with a more complicated variety of requirements. We will continue to invest in staff development in order to react to individuals' genuine and evolving needs and desires.

www.casbenscare.com

Our live-in care services

A live-in carer creates a stable atmosphere in the family home, which gives you the constancy of a regular daily schedule that you love.

You receive individualised care in familiar settings, allowing you to maintain your desired lifestyle. Being surrounded by the things you love about your house—the garden, your pets, and your neighbours—gives you a sense of belonging and security.



Live-in care is a less expensive and more enjoyable alternative to a nursing home. There is no emotional tension associated with packing up one's entire life. We tailor a care plan to your or your loved one's lifestyle, and we evaluate it on a regular basis as your requirements change. We guarantee that the care plan is agreed upon by you, your loved ones, and your healthcare providers.

You keep complete control over your lifestyle. After experiencing live-in care, most people realise there is no compelling reason to leave their home for residential care. They can be cared for and supported throughout time following a health crisis to live their final years in privacy and dignity via professional home care.

We understand that your house is your fortress. We support your authority by always allowing you to be the boss and never taking over. We support your preferences and allow you to operate the house as you see fit.



Our care plans include:

Personal care

to assist you in managing specific problems and maximising your independence at home.

Examples include:

- Assessment, provision, and assistance with continence devices such as disposable pads and absorbent aids, commode chairs, bedpans, and urinals
- Dementia consulting services
- Services for eyesight and hearing



Nursing care services

Nursing services aid in the treatment and monitoring of medical issues at home.

Examples include:

- Wound treatment and care
- a caregiver to assist you in taking your medicine.
- some medical examinations
- general health and other evaluations



Nutrition and food

to assist you in eating healthy.

Examples include:

- assist with food preparation (including special diets for health, religious, cultural, or other reasons).
- assist with the use of eating utensils
- If required, assist with feeding.
- services for food delivery



Specialised support

to assist you in managing specific problems and maximising your independence at home.

Examples include:

- Assessment, provision, and assistance with continence devices such as disposable pads and absorbent aids, commode chairs, bedpans, and urinals
- Dementia consulting services
- Services for eyesight and hearing



Social support services

Encourage you to participate in social and community activities that promote and safeguard your way of life, interests, and well-being.

Examples include:

- arranging for a caregiver to make social calls in the house
- providing a companion to accompany you on appointments (such as going to the doctor) and trips (e.g., shopping).
- coordinating or supplying transportation to social gatherings and organising social activities
- Someone to assist in the setup of phone and internet communication services in order to stay in touch with loved ones
- A care professional who assists you in your home for a certain time (for example, when your carer is away or unavailable)



Cleaning and housekeeping

to assist you in keeping your house clean, neat, and safe.

Examples include:

- assist with bedmaking
- assistance with ironing and washing
- assist with cleaning tasks such as dusting, vacuuming, and mopping.
- Weeding, trimming, grass mowing, minor garden upkeep, and waste removal



A close-up photograph showing a caregiver in a dark shirt holding a glass of water to the lips of an elderly woman with glasses. The woman is looking down at the glass. The background is slightly blurred, focusing on the interaction.

The cost of live-in care

A live-in care package allows anyone who needs live-in care to remain in their own home with the aid and support of a private live-in caregiver. Whether you need companionship for a relative or have special health conditions that require extra support, live-in care offers a full-time option and is a practical and economical alternative to moving into a care facility. Your care worker can assist you in living freely by residing in your home.

Choosing care for a loved one is a difficult option because every family's circumstances are unique. To make an informed choice, you need to know what your options are and how they differ from each other, as well as how much each type of care costs.

The cost of live-in care is highly dependent on the care needs and preferences of the person or people being supported. So, contact us to receive an exact quote for your care requirements.



For more information, contact us.
We will gladly assist you.



0179 368 3550 / 0179 368 3551



info@casbenscare.com



Dorset House, Kingston Road,
Leatherhead, Surrey, England,
KT22 7PL

www.casbenscare.com
