



**FirePro.**

**Pro.**



Product  
Catalogue

**2016**





## A Complete Solution Portfolio

FirePro deliver a broad range of fire suppression systems and solutions for a multitude of applications in all industries. FirePro's state of the art condensed aerosol fire extinguishing units are matched with certified monitoring panels, controllers, detection systems, alarms and all other related accessories. Moreover, technical brochures, manuals and software tools accompany each unit and system installation. In addition, we provide constant after-sales technical support and training where required.

### Focus on High Quality

FirePro products are certified and listed by Underwriters' Laboratories (UL) in the United States, as well as by the BSI and KIWA in Europe. Furthermore, they are manufactured under strict international quality and environmental management standards and requirements. All FirePro product lines are complemented by an equally advanced range of detection and control technologies.

### Environment Friendly Technology

FirePro units are manufactured with a certified shelf-life of 15 years, they are friendly to the environment and eco-systems. They are non-toxic, have zero ozone-depletion potential and do not contribute to global warming.

### Cost Effective & Practical

FirePro systems are ideal for both conventional and non-conventional applications. Moreover, they can be applied in situations which are considered to be technically or financially challenging for other technologies.

### Support & Expertise

In the highly regulated market of fire suppression, we match our products with up to date information pertaining to fire engineering standards, applications and worldwide support. Our global distribution network is comprised of trained and certified professionals ready to design, supply, install and maintain the full range of FirePro products. FirePro and its partners currently protect key assets in more than 110 countries worldwide.

**FirePro and Partners are Reinventing Fire Suppression.**

# FirePro.

## Product Catalogue Index

### Section A ..... Pages 07 - 29

Fire Extinguishing Condensed Aerosol  
Generators For Fixed Installations

**In this section**

FirePro Fire Extinguishing Generators

FP-20 / FP-40 / FP-80 / FP-100 / FP-200 / FP-500

FP-1200 / FP-2000 / FP-3000 / FP-4200 / FP-5700

### Section B ..... Page 31 - 37

Fire Extinguishing Condensed Aerosol  
Manual Generators

**In this section**

FirePro Fire Extinguishing Generators

FP-200M / FP-500M / FP-1000M

### Section C ..... Page 39-55

Fire Extinguishing  
Control Panels



Section D ..... **Pages 57-67**

Fire Extinguishant Controllers,  
Sequential Activators,  
Bulb Thermal Actuators

Section E ..... **Pages 69-75**

Cables & Accessories

Section F ..... **Pages 77-97**

Fire Detection, Warning Devices,  
Manual Call Points &  
Power Supply Units



# Section A



Fire Extinguishing  
Condensed Aerosol  
Generators For Fixed  
Installations

# FP-20



## ■ FP-20SE

**Product Code: 10135**

**Product Description: FirePro Fire Extinguishing Generator FP-20SE.**

**Features:**

- UL, KIWA, BSI, ActivFire Approved
- This model discharges through two sets of outlets (top & bottom)

## ■ FP-20TH

**Product Code: 10649**

**Product Description: FirePro Fire Extinguishing Generator FP-20TH.**

**Features:**

- This model can be activated by a Bulb Thermal Actuator only and discharges through one outlet only (bottom).

## ■ FP-20T

**Product Code: 10620**

**Product Description: FirePro Fire Extinguishing Generator FP-20T.**

**Features:**

- KIWA Approved
- Under Process to be UL, BSI, ActivFire Approved
- This model discharges through one outlet only (bottom).

## TECHNICAL INFORMATION

Model	FP-20SE / FP-20T / FP-20TH*
Activation mechanism	Electrical (min. 1.5V DC, 0.8A in 3-4 sec) *FP-20TH Thermal Activation Only
Current intensity to be tested	Maximum 5 mA
Weight (gross)	310 g (excluding bracket)
Mass of FPC compound	20 g
Operational discharge time	5 - 10 seconds
Discharge length	1 m
Dimensions (Height : Diameter)	170 mm : 32 mm (incl. connector housing)
Fire Class	A, B, C, F

Operating temperatures: -54°C to +54°C | Generators are provided complete with brackets

# FP-40



## ■ FP-40S

**Product Code: 10136**

Product Description: **FirePro Fire Extinguishing Generator FP-40S.**

Features:

- UL, KIWA, BSI, ActivFire Approved
- This model discharges through two sets of outlets (top & bottom)

## ■ FP-40T

**Product Code: 10609**

Product Description: **FirePro Fire Extinguishing Generator FP-40T.**

Features:

- KIWA Approved
- Under Process to be UL, BSI, ActivFire Approved
- This model discharges through one outlet only (bottom).

## TECHNICAL INFORMATION

Model	FP-40S / FP-40T
Activation mechanism	Thermal Electrical (min 1.5V DC, 0.8A in 3-4 sec)
Activator type	Heating element with 2.3 ohm resistance
Current intensity to be tested	Maximum 5 mA
Weight (gross)	610 g (excluding bracket)
Mass of FPC compound	40 g
Operational discharge time	5 - 10 seconds
Discharge length	1 m
Dimensions (Height : Diameter)	145 mm : 51 mm (incl. connector housing)
Fire class	A, B, C, F

Operating temperatures: -54°C to +54°C | Generators are provided complete with brackets

# FP-80





## ■ FP-80S

**Product Code: 10138**

Product Description: **FirePro Fire Extinguishing Generator FP-80S.**

Features:

- UL, KIWA, BSI, ActivFire Approved
- This model discharges through two sets of outlets (top & bottom)

## ■ FP-80T

**Product Code: 10617**

Product Description: **FirePro Fire Extinguishing Generator FP-80T.**

Features:

- KIWA Approved
- Under Process to be UL, BSI, ActivFire Approved
- This model discharges through one outlet only (bottom).

## TECHNICAL INFORMATION

Model	FP-80S / FP-80T
Activation mechanism	Thermal Electrical (min 1.5V DC, 0.8A in 3-4 sec)
Activator type	Heating element with 2.3 ohm resistance
Current intensity to be tested	Maximum 5 mA
Weight (gross)	870 g (excluding bracket)
Mass of FPC compound	80 g
Operational discharge time	5 - 10 seconds
Discharge length	2 m
Dimensions (Height : Diameter)	190 mm x 51 mm (incl. connector housing)
Fire class	A, B, C, F

Operating temperatures: -54°C to +54°C | Generators are provided complete with brackets

# FP-100S



## ■ FP-100S

**Product Code: 10140**

Product Description: **FirePro**

**Fire Extinguishing Generator FP-100S.**

Features:

- UL, KIWA, BSI, ActivFire Approved

## TECHNICAL INFORMATION

<b>Model</b>	FP-100S
<b>Activation mechanism</b>	Thermal Electrical (min 1.5V DC, 0.8A in 3-4 sec)
<b>Activator type</b>	Heating element with 2.3 ohm resistance
<b>Current intensity to be tested</b>	Maximum 5 mA
<b>Weight (gross)</b>	1370 g (excluding bracket)
<b>Mass of FPC compound</b>	100 g
<b>Operational discharge time</b>	5 - 10 seconds
<b>Discharge length</b>	1 m
<b>Dimensions (Height : Diameter)</b>	155 mm : 84 mm (incl. connector housing)
<b>Fire class</b>	A, B, C, F

Operating temperatures: -54°C to +54°C | Generators are provided complete with brackets

# FP-200S



## ■ FP-200S

**Product Code: 10142**

Product Description: **FirePro**

**Fire Extinguishing Generator FP-200S.**

Features:

- UL, KIWA, BSI, ActivFire Approved

## TECHNICAL INFORMATION

<b>Model</b>	FP-200S
<b>Activation mechanism</b>	Thermal Electrical (min 1.5V DC, 0.8A in 3-4 sec)
<b>Activator type</b>	Heating element with 2.3 ohm resistance
<b>Current intensity to be tested</b>	Maximum 5 mA
<b>Weight (gross)</b>	1840 g (excluding bracket)
<b>Mass of FPC compound</b>	200 g
<b>Operational discharge time</b>	5 - 10 seconds
<b>Discharge length</b>	2 m
<b>Dimensions (Height : Diameter)</b>	185 mm : 84 mm (incl. connector housing)
<b>Fire class</b>	A, B, C, F

Operating temperatures: -54°C to +54°C | Generators are provided complete with brackets

# FP-500S



## ■ FP-500S

**Product Code: 10145**

Product Description: **FirePro**

**Fire Extinguishing Generator FP-500S.**

Features:

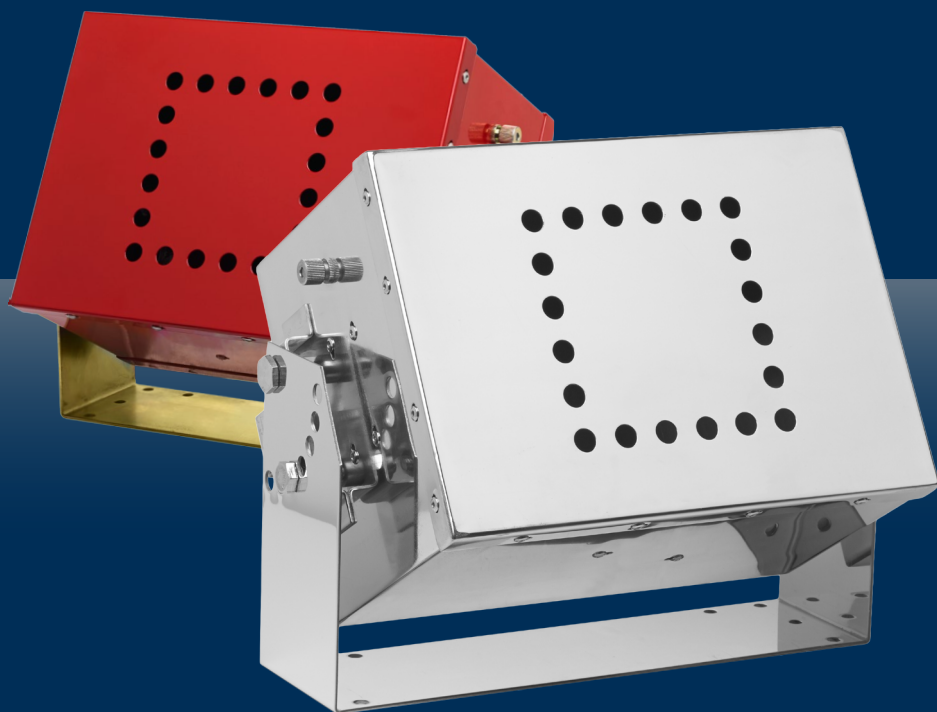
- UL, KIWA, BSI, ActivFire Approved

## TECHNICAL INFORMATION

<b>Model</b>	FP-500S
<b>Activation mechanism</b>	Thermal Electrical (min 1.5V DC, 0.8A in 3-4 sec)
<b>Activator type</b>	Heating element with 2.3 ohm resistance
<b>Current intensity to be tested</b>	Maximum 5 mA
<b>Weight (gross)</b>	3340 g (excluding bracket)
<b>Mass of FPC compound</b>	500 g
<b>Operational discharge time</b>	5 - 10 seconds
<b>Discharge length</b>	3 m
<b>Dimensions (Height : Diameter)</b>	295 mm : 84 mm (incl. connector housing)
<b>Fire class</b>	A, B, C, F

Operating temperatures: -54°C to +54°C | Generators are provided complete with brackets

# FP-1200





## ■ FP-1200

**Product Code: 10147**

Product Description: **FirePro Fire Extinguishing Generator FP-1200.**

**Features:**

- UL, KIWA, BSI, ActivFire Approved
- Carbon-Steel casing Red-coated

## ■ FP-1200S

**Product Code: 10395**

Product Description: **FirePro Fire Extinguishing Generator FP-1200S.**

**Features:**

- UL, KIWA, BSI, ActivFire Approved
- Stainless steel casing

## ■ FP-1200T

**Product Code: 10316**

Product Description: **FirePro Fire Extinguishing Generator FP-1200T.**

**Features:**

- Under Process to be UL, KIWA, BSI, ActivFire Approved
- This model can be activated by a Bulb Thermal Activator.
- Carbon-Steel casing Red-coated

## ■ FP-1200TS

**Product Code: 10622**

Product Description: **FirePro Fire Extinguishing Generator FP-1200TS.**

**Features:**

- Under Process to be UL, KIWA, BSI, ActivFire Approved
- This model can be activated by a Bulb Thermal Activator
- Stainless steel casing

## TECHNICAL INFORMATION

Model	FP-1200 / FP-1200S / FP-1200T / FP-1200TS
Activation mechanism	Thermal Electrical (min 1.5V DC, 0.8A in 3-4 sec)
Activator type	Heating element with 2.3 ohm resistance
Current intensity to be tested	Maximum 5 mA
Weight (gross)	10900 g (excluding bracket)
Mass of FPC compound	1200 g
Operational discharge time	10 - 15 seconds
Discharge length	3.5 m
Dimensions	216 mm x 300 mm x 167 mm
Fire class	A, B, C, F

Operating temperatures: -54°C to +54°C | Generators are provided complete with brackets

# FP-2000



## ■ FP-2000

**Product Code: 10149**

Product Description: **FirePro Fire Extinguishing Generator FP-2000.**

Features:

- UL, KIWA, BSI, ActivFire Approved
- Carbon-Steel casing Red-coated

## ■ FP-2000S

**Product Code: 10392**

Product Description: **FirePro Fire Extinguishing Generator FP-2000S.**

Features:

- UL, KIWA, BSI, ActivFire Approved
- Stainless steel casing

## ■ FP-2000T

**Product Code: 10317**

Product Description: **FirePro Fire Extinguishing Generator FP-2000T.**

Features:

- Under Process to be UL, KIWA, BSI, ActivFire Approved
- This model can be activated by a Bulb Thermal Activator.
- Carbon-Steel casing Red-coated

## ■ FP-2000TS

**Product Code: 10623**

Product Description: **FirePro Fire Extinguishing Generator FP-2000TS.**

Features:

- Under Process to be UL, KIWA, BSI, ActivFire Approved
- This model can be activated by a Bulb Thermal Activator
- Stainless steel casing

## TECHNICAL INFORMATION

Model	FP-2000 / FP-2000S / FP-2000T / FP-2000TS
Activation mechanism	Thermal Electrical (min 1.5V DC, 0.8A in 3-4 sec)
Activator type	Heating element with 2.3 ohm resistance
Current intensity to be tested	Maximum 5 mA
Weight (gross)	15500 g (excluding bracket)
Mass of FPC compound	2000 g
Operational discharge time	10 - 15 seconds
Discharge length	3.5 m
Dimensions	300 mm x 300 mm x 185 mm
Fire class	A, B, C, F

Operating temperatures: -54°C to +54°C | Generators are provided complete with brackets

# FP-3000



## ■ FP-3000

**Product Code: 10150**

Product Description: **FirePro Fire Extinguishing Generator FP-3000.**

Features:

- UL, KIWA, BSI, ActivFire Approved
- Carbon-Steel casing Red-coated

## ■ FP-3000S

**Product Code: 10393**

Product Description: **FirePro Fire Extinguishing Generator FP-3000S.**

Features:

- UL, KIWA, BSI, ActivFire Approved
- Stainless steel casing

## ■ FP-3000T

**Product Code: 10318**

Product Description: **FirePro Fire Extinguishing Generator FP-3000T.**

Features:

- Under Process to be UL, KIWA, BSI, ActivFire Approved
- This model can be activated by a Bulb Thermal Activator.
- Carbon-Steel casing Red-coated

## ■ FP-3000TS

**Product Code: 10624**

Product Description: **FirePro Fire Extinguishing Generator FP-3000TS.**

Features:

- Under Process to be UL, KIWA, BSI, ActivFire Approved
- This model can be activated by a Bulb Thermal Activator
- Stainless steel casing

## TECHNICAL INFORMATION

Model	FP-3000 / FP-3000S / FP-3000T / FP-3000TS
Activation mechanism	Thermal Electrical (min 1.5V DC, 0.8A in 3-4 sec)
Activator type	Heating element with 2.3 ohm resistance
Current intensity to be tested	Maximum 5 mA
Weight (gross)	16300 g (excluding bracket)
Mass of FPC compound	3000 g
Operational discharge time	15 - 20 seconds
Discharge length	4 m
Dimensions	300 mm x 300 mm x 185 mm
Fire class	A, B, C, F

Operating temperatures: -54°C to +54°C | Generators are provided complete with brackets

# FP-4200



## ■ FP-4200T

**Product Code: 10338**

Product Description: **FirePro Fire Extinguishing Generator FP-4200T.**

Features:

- KIWA Approved
- Under Process to be UL, BSI, ActivFire Approved
- This model can be activated by a Bulb Thermal Activator.
- Carbon-Steel casing Red-coated

## ■ FP-4200TS

**Product Code: 10644**

Product Description: **FirePro Fire Extinguishing Generator FP-4200TS.**

Features:

- KIWA Approved
- Under Process to be UL, BSI, ActivFire Approved
- This model can be activated by a Bulb Thermal Activator.
- Stainless steel casing.

## TECHNICAL INFORMATION

Model	FP-4200T / FP-4200TS
Activation mechanism	Thermal Electrical (Min 1.5V DC, 0.8A in 3-4 sec)
Activator type	Heating element with 2.3 ohm resistance
Current intensity to be tested	Maximum 5 mA
Weight (gross)	25000 g (excluding bracket)
Mass of FPC compound	4200 g
Operational discharge time	15 - 20 seconds
Discharge length	5 m
Dimensions	300 mm x 300 mm x 300 mm
Fire class	A, B, C, F

Operating temperatures: -54°C to +54°C | Generators are provided complete with brackets

# FP-5700





## ■ FP-5700

**Product Code: 10151**

Product Description: **FirePro Fire Extinguishing Generator FP-5700.**

Features:

- UL, KIWA, BSI, ActivFire Approved
- Carbon-Steel casing Red-coated

## ■ FP-5700S

**Product Code: 10394**

Product Description: **FirePro Fire Extinguishing Generator FP-5700S.**

Features:

- UL, KIWA, BSI, ActivFire Approved
- Stainless steel casing

## ■ FP-5700T

**Product Code: 10319**

Product Description: **FirePro Fire Extinguishing Generator FP-5700T.**

Features:

- Under Process to be UL, KIWA, BSI, ActivFire Approved
- This model can be activated by a Bulb Thermal Activator.
- Carbon-Steel casing Red-coated

## ■ FP-5700TS

**Product Code: 10625**

Product Description: **FirePro Fire Extinguishing Generator FP-5700TS.**

Features:

- Under Process to be UL, KIWA, BSI, ActivFire Approved
- This model can be activated by a Bulb Thermal Activator.
- Stainless steel casing.

## TECHNICAL INFORMATION

Model	FP-5700 / FP-5700S / FP-5700T / FP-5700TS
Activation mechanism	Thermal Electrical (min 1.5V DC, 0.8A in 3-4 sec)
Activator type	Heating element with 2.3 ohm resistance
Current intensity to be tested	Maximum 5 mA
Weight (gross)	26400 g (excluding bracket)
Mass of FPC compound	5700 g
Operational discharge time	15 - 20 seconds
Discharge length	8 m
Dimensions	300 mm x 300 mm x 300 mm
Fire class	A, B, C, F

Operating temperatures: -54°C to +54°C | Generators are provided complete with brackets





# Section B



Fire Extinguishing  
Condensed Aerosol  
Manual Generators

# FP-200M



## ■ FP-200M

**Product Code: 10143**

Product Description:

**FirePro Fire Extinguishing  
Manual Generator FP-200M**

Features:

Manually Activated Generator

## TECHNICAL INFORMATION

<b>Model</b>	FP-200M
<b>Type</b>	Cold
<b>Activation mechanism</b>	Manual, by removing activation pin
<b>Activator type</b>	Thermal Activator
<b>Current intensity to be tested</b>	N/A
<b>Weight (gross)</b>	1800 g
<b>Mass of FPC compound</b>	200 g
<b>Operational discharge time</b>	10 - 15 seconds
<b>Discharge outlets</b>	1
<b>Discharge length</b>	2 m
<b>Dimensions (Height : Diameter)</b>	150 mm : 84 mm
<b>Fire class</b>	A, B, C, F

# FP-500M



## ■ FP-500M

**Product Code: 10347**

Product Description:

**FirePro Fire Extinguishing  
Manual Generator FP-500M**

Features:

Manually Activated Generator

## TECHNICAL INFORMATION

<b>Model</b>	FP-500M
<b>Type</b>	Cold
<b>Activation mechanism</b>	Manual, by removing activation pin
<b>Activator type</b>	Thermal Activator
<b>Current intensity to be tested</b>	N/A
<b>Weight (gross)</b>	1910 g
<b>Mass of FPC compound</b>	500 g
<b>Operational discharge time</b>	10 - 15 seconds
<b>Discharge outlets</b>	1
<b>Discharge length</b>	2 m
<b>Dimensions (Height : Diameter)</b>	150 mm : 84 mm
<b>Fire class</b>	A, B, C, F

# FP-1000M





## ■ FP-1000M

**Product Code: 10146**

Product Description:

**FirePro Fire Extinguishing  
Manual Generator FP-1000M**

Features:

Manually Activated Generator

## TECHNICAL INFORMATION

<b>Model</b>	FP-1000M
<b>Type</b>	Hot
<b>Activation mechanism</b>	Manual, by removing activation pin
<b>Activator type</b>	Thermal Activator
<b>Current intensity to be tested</b>	N/A
<b>Weight (gross)</b>	2240 g
<b>Mass of FPC compound</b>	1000 g
<b>Operational discharge time</b>	20 - 25 seconds
<b>Discharge outlets</b>	2
<b>Discharge length</b>	3 m
<b>Dimensions (Height : Diameter)</b>	200 mm : 84 mm
<b>Fire class</b>	A, B, C, F



# Section C



Fire Extinguishing  
Control Panels

# FirePro-Kentec Sigma A-XT Extinguishant Control Panel

**Product Code: 10279**

**Product Description: FirePro-  
Kentec Sigma A-XT Extinguishant  
Control Panel 230V (K1810-13)**

**Product Code: 10502**

**Product Description: FirePro-  
Kentec Sigma A-XT Extinguishant  
Control Panel 115V (K1810-12)**



## FEATURES

- UL864 and FM listed
- Single area extinguishant panel
- 3 detection zones
- 1 extinguishant output

## PRODUCT OVERVIEW

Designed and manufactured to the highest standards in a quality controlled environment and with UL and FM approvals, the Sigma A-XT releasing panel offers outstanding value and performance for all small to medium fixed firefighting installations.

# Sigma A-SI Extinguishant Status Indicator

**Product Code: 10667**

**Product Description: Sigma A-SI  
Extinguishant Status Indicator  
Full (K1821-19)**

**Product Code: 10627**

**Product Description: Sigma A-SI  
Extinguishant Status Indicator  
Light (K1821-17)**



## PRODUCT OVERVIEW

The Sigma A-Si range of status indicators provide detailed status information for Sigma A-XT releasing control equipment.

## FEATURES

- UL864 and FM Listed
- 6 lamp status unit with mode select keyswitch
- Detailed indication of the status of the control panel

# Sigma A-XT Ancillary Board

**Product Code: 10636**

**Product Description: Sigma A-XT  
Ancillary Board (K1822-10)**



## PRODUCT OVERVIEW

The Sigma A-XT Ancillary Board is compatible with all Sigma A-XT control panels. It provides volt free normally open contacts allowing control of sub-systems and plant remotely from the main panel over a two wire data bus.

## FEATURES



- UL864 and FM listed
- Two wire serial connection
- Up to 7 per system

# FirePro-Kentec Sigma XT Extinguishant Control Panel

**Product Code: 10176**

**Product Description: FirePro-Kentec Sigma XT Extinguishant Control Panel FP-(K11031M2)**



## FEATURES

- Approved to EN12094-1, EN54-2 and EN54-4
- Single Area Extinguishant Panel
- 3 Detection Zones
- 1 Extinguishant Output

## PRODUCT OVERVIEW

Designed and manufactured to the highest standards in a quality controlled environment and with European EN12094-1 approvals, the Sigma XT extinguishant releasing panel offers outstanding value and performance for all small to medium fixed firefighting installations.

# Kentec Sigma SI Extinguishant Status Indicators

**Product Code: 10279**

**Product Description: Kentec  
Sigma SI Extinguishant Status  
Indicators - Full (K911113M8)**

**Product Code: 10485**

**Product Description: Kentec  
Sigma SI Extinguishant Status  
Indicators - Light (K911110M8)**



## FEATURES

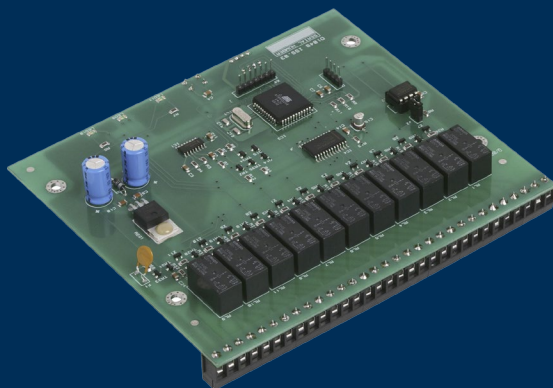
- Approved to EN12094-1, EN54-2 and EN54-4
- 6 lamp status unit with mode select keyswitch
- High brightness LEDs
- Detailed indication of the status of the control panel

## PRODUCT OVERVIEW

The Sigma SI range of status indicators provide detailed status information for Sigma XT/XT+ extinguishant release control equipment.

# Kentec Sigma XT Ancillary Board

■  
**Product Code: 10648**  
Product Description:  
**Kentec Sigma XT  
Ancillary Board (K588)**



## FEATURES

- 2 Wire Serial Connection
- Up to 7 per System
- Volt-free Relay Outputs for Fire and Extinguishing System

## PRODUCT OVERVIEW

The Sigma XT Ancillary Board is compatible with all Sigma XT control panels. It provides volt-free normally open contacts allowing control of sub-systems and plants remotely from the main panel over a two-wire data bus.



# Kentec Sigma XT+ Extinguishant Status Indicators

**Product Code: 10358**

**Product Description: Kentec Sigma XT+  
Extinguishant Status Indicators,  
4 Zones, 2 Areas (FP-K21042M3)**

**Product Code: 10459**

**Product Description: Kentec Sigma XT+  
Extinguishant Status Indicators,  
8 Zones, 2 Areas (FP-K21082M3)**

**Product Code: 10177**

**Product Description: Kentec Sigma XT+  
Extinguishant Status Indicators,  
8 Zones, 3 Areas (FP-K21083M4)**

**Product Code: 10178**

**Product Description: Kentec Sigma XT+  
Extinguishant Status Indicators,  
8 Zones, 4 Areas (FP-K21084M4)**



## FEATURES

- Approved to EN12094-1, EN54-2 and EN54-4
- 2, 4 or 8 detection zones
- 1 to 4 extinguishant areas
- Dual extinguishant outputs for each area

## PRODUCT OVERVIEW

Sigma XT+ control panels are multi-area extinguishant control panels with up to 4 extinguishant areas available.

# Kentec Sigma CP Fire Alarm Zone Panel

**Product Code: 10487**  
**Product Description: Kentec**  
**Sigma CP Fire Alarm Zone Panel,**  
**4 Zone (K11040M2)**

**Product Code: 10488**  
**Product Description: Kentec**  
**Sigma CP Fire Alarm Zone Panel,**  
**8 Zone (K11080M2)**



## FEATURES

- Fully certified to BS EN54-2 and BS EN54-4
- 2-wire and standard version in 2, 4 or 8 Zones
- 2-wire repeaters and ancillary boards
- Fully programmable using simple menu options

## PRODUCT OVERVIEW

The Sigma CP range of conventional Fire Control Panels are available with 2, 4 or 8 Zone Control Panels, which may be extensively configured via a simple front panel-operated programming method.

# Kentec Sigma A-CP Fire Alarm Zone Panel

**Product Code: 10661**

**Product Description: Kentec  
Sigma A-CP Fire Alarm Zone  
Panel, 4 Zone (K1844-11)**

**Product Code: 10662**

**Product Description: Kentec  
Sigma A-CP Fire Alarm Zone  
Panel, 8 Zone (K1848-11)**



## FEATURES

- UL864 Approved
- 2-wire and standard versions in 2, 4 or 8 Zones
- 2-wire repeaters and ancillary boards
- Fully programmable using simple menu options

## PRODUCT OVERVIEW

The Sigma A-CP range of conventional Fire Control Panels with optional built-in communicator are available with 2, 4 or 8 initiating circuits which may be extensively configured via a simple front panel operated programming method.

# Kentec Syncro AS

## Analogue Addressable Fire Control Panel

### Argus Vega Protocol

**Product Code: 10343**

Product Description: **Kentec Syncro AS Analogue Addressable Fire Control Panel - Argus Vega Protocol, 1-Loop (V80161M2)**

**Product Code: 10467**

Product Description: **Kentec Syncro AS Analogue Addressable Fire Control Panel - Argus Vega Protocol, 2-Loops (V80162M2)**



## FEATURES

- Certified to EN54-2 / EN54-4
- 16 zonal LED indicators, large graphic display
- Expandable from 1 to 2 Loops
- Up to 512 additional programmable I/O via Syncro I/O modules
- Stores 500 last events in event log

## PRODUCT OVERVIEW

Syncro AS is a versatile range of open protocol fire alarm control panels compatible with existing Syncro fire alarm panel technology. Available with one or two detection loops capable of hosting up to 240 devices (Argus Vega). Suitable for all small to medium sized fire detection systems, Syncro AS control panels can be expanded and networked to become part of much larger systems. With its large graphical display and ergonomic button and indicator layout, the Syncro AS control panel is simple and straightforward to understand for installers, commissioning engineers and end users alike.

# Elite RS

## Analogue Addressable Fire Control Panel



**Product Code: 10663**

**Product Description: Elite RS Analogue  
Addressable Fire Control Panel,  
1-Loop (K0810-10)**



**Product Code: 10664**

**Product Description: Elite RS Analogue  
Addressable Fire Control Panel, 2-Loop  
(K0820-10)**



## FEATURES

- UL / FM Approved
- Large graphic display
- Powerful, network wide cause and effects (500 total)
- Stores 1000 last events in history log
- Can be networked with RS / Elite panels

## PRODUCT OVERVIEW

Elite RS is a versatile range of open protocol fire alarm control panels. Available with one or two detection loops for a total of 250 primary points or 400 points using subpoints. Elite RS uses leading edge microprocessor based electronics to provide a flexible control system with high reliability and integrity. Suitable for all small to medium sized fire detection systems, Elite RS control panels can be expanded and networked to become part of much larger systems if the need arises, therefore providing a future proof solution for any installation.

# FirePro Marine Fire Control Panel

**Product Code: 10651**

**Product Description: FirePro  
Marine Fire Control Panel  
(FPX103C)**



## FEATURES

- MCA Approved
- Manual or automatic activation of aerosol generators
- Two 8A changeover relay circuits for external warning/shutdown circuits.
- Monitors status and time delay option
- Visual and audible warning of detector and extinguisher line faults

## PRODUCT OVERVIEW

The FPX103C panel is used to monitor and control multiple fire detectors and FirePro generators as part of a marine engine fire protection system. It can support multiple combinations of up to four flame/smoke/overheat/linear heat detectors for 24V panel supply and up to two with a 12V panel supply. The maximum number of FirePro generators, which can be fitted per panel is four for a 24V panel supply and two for 12V panel supply. The fire protection system meets the requirements of the SOLAS and the Recreational Craft Directive/ISO9094 Parts 1 and 2.

# FirePro Marine Main Central Panel



**Product Code: 10166**  
**Product Description: FirePro  
Marine Main Central Panel  
(FS12)**



## FEATURES

- DNV Approved (A-12563), according to IMO MSC 1270
- Suitable for use in both small and large installations
- Redundant system
- System monitoring ensures detection of system faults
- 1-Zone smoke detector input

## PRODUCT OVERVIEW

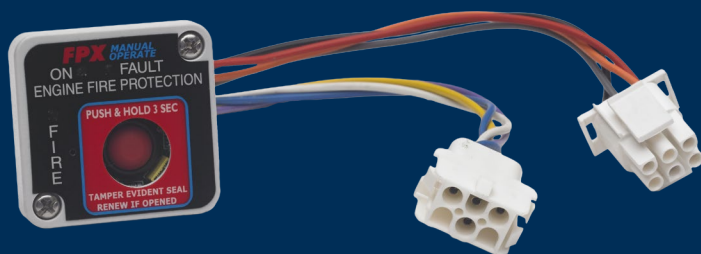
The purpose of the FS12 system is to control and monitor a number of FirePro® aerosol generators mounted on a ship as part of a fire extinguishing systems.

The primary purpose of the FS12 system is to activate the aerosol generators in event of fire.

# FirePro Vehicle Control Panel

**Product Code: 10167**

**Product Description: FirePro Vehicle Control Panel (FPX106)**



## FEATURES

- Supports a single loop of Linear Heat Sensor (LHS) or thermal switches.
- Supports single or multiple FirePro extinguisher units.
- Manual Fire Extinguisher Operate button with tamper evident seal.
- Designed to meet the requirements of 89/336/EEC (EMC Directive) and Automotive Directive 95/54/EC

## PRODUCT OVERVIEW

This is a manually operated fire suppression system, which uses a linear heat cable detector fitted within the protected area. These linear heat cable detectors are used to detect heat produced by fire and also set temperatures classed as extreme for the protected area. The FirePro generators are only activated manually with human intervention via the electrical activation switch on the FPX106 panel. The FPX106 panel can operate multiples of FirePro generators: 12VDC maximum of 2 generators or 24VDC maximum of 4 generators. These are activated through wiring to a multiple activation connection block.



# FirePro Vehicle Kit

## Vehicle Fire Suppression System



### VEHICLE KIT

**Product Code: 10171**

**Product Description: FirePro**

**Vehicle Suppression Kit**

## FEATURES

- Up to 4 Condensed Aerosol Generator units can be connected, supervised
- Detection Line supervision
- Panel, Releasing Line supervision
- LED Fault / Fire / Power indicators

## PRODUCT OVERVIEW

This is a manually operated fire suppression system, which uses a linear heat cable detector fitted within the protected area. These linear heat cable detectors are used to detect heat produced by fire and also set temperatures classed as extreme for the protected area. The FirePro generators are only activated manually with human intervention via the electrical activation switch on the FPX106 panel. The FPX106 panel can operate multiples of FirePro generators: maximum 2 at 12VDC, and maximum 4 at 24VDC. The Bus Kit includes a Vehicle Panel, a fuse box, Linear Heat Detector cables and supports, a Termination Box, a Junction Box, fireproof cables and supports, sundries, etc.



# Section D



Fire Extinguishant  
Controllers,  
Sequential Activators,  
Bulb Thermal  
Actuators

# FPC-1

## Fire Detection and Extinguishant Controller

**Product Code: 10161**  
**Product Description: FPC-1**  
**Extinguishant Controller**



## FEATURES

- 1 detection zone, supervised
- Operated by 4 alkaline batteries
- Up to 2 FirePro Generators, supervised
- 'Power On', 'Fire' and 'Fault' indicator

## PRODUCT OVERVIEW

The Releasing Device FPC-1, operated by its own supervised power source enables monitoring, detection and automatic extinguishing of a fire in an electrical cabinet using the self-contained heat detector sensor or an external linear heat detection cable and two condensed aerosol fire extinguishing units

# FPC-2

## Fire Detection and Extinguishant Controller

**Product Code: 10162**

**Product Description: FPC-2  
Extinguishant Controller**



## FEATURES

- 1 detection zone, supervised
- Fire and Fault alarm relays
- Up to 4 FirePro Generators, supervised
- Internal Buzzer
- 'Power On', 'Fire' and 'Fault' indicator

## PRODUCT OVERVIEW

The Releasing Device FPC-2 enables monitoring, detection and automatic extinguishing of a fire in an electrical cabinet using a linear heat detection cable or automatic smoke detectors and four condensed aerosol fire extinguishing units.

# FPC-4

## Fire Detection and Extinguishant Controller

**Product Code: 10514**  
**Product Description: FPC-4RM**  
**Extinguishant Controller - Metal Case**

**Product Code: 10448**  
**Product Description: FPC-4R**  
**Extinguishant Controller- Plastic Case**



## FEATURES

- 2 detection zones, not supervised
- Operated by one 3V, CR2 Lithium battery
- Fire alarm relay
- Up to 2 FirePro Generators, not supervised

## PRODUCT OVERVIEW

The Releasing Device FPC-4 is capable of detecting fire by using the linear heat detector cable and activating the condensed aerosol fire extinguishing units automatically in an electrical cabinet.

# FirePro-Kentec Sequential Activator

**Product Code: 10173**

Product Description: **FirePro-Kentec  
Sequential Activator - Standard Box  
(FP-SA/GEN3.0)**

**Product Code: 10486**

Product Description: **FirePro-Kentec  
Sequential Activator - Larger Box  
(FP-SA/GEN3.0M8)**



## FEATURES

- UL Compatibility Test Approval
- Up to 2 FirePro Generator units, supervised
- Extinguishing Panel, Releasing Line supervision
- LED 'Fault' indicator

## PRODUCT OVERVIEW

Provide connections from the FirePro Sequential Activator to the Sigma XT, Sigma A-XT, Sigma XT+ Fire Control Panels and the Sigma XT+ ECU devices using four-conductor cabling.

A maximum of 20 FirePro Sequential Activators can be connected to each extinguishing line.

# FPC-5

## Extinguishant Controller



### FEATURES

- 1 detection zone, supervised
- Operated by one 3V, CR2 Lithium Battery
- 1 Aerosol Generator, not supervised

### PRODUCT OVERVIEW

The FPC-5 Fire Detection and Actuation Module consists of a control unit, mounted in a metal housing, which can be interfaced to any condensed aerosol fire extinguishing unit. It is capable of detecting fire by using the linear heat detector cable or bimetallic sensor and activating the condensed aerosol fire extinguishing unit automatically in an electrical cabinet.

For Generators FP-20 / 40 / 80

■ **Product Code: 10560**

Product Description: **FPC-5 Fire Extinguishant Controller for FP-20/ 40/ 80 with Gland for LHD Cable**

■ **Product Code: 10557**

Product Description: **FPC-5 Fire Extinguishant Controller for FP-20/ 40/ 80 with Bimetallic Sensor at 60°C**

■ **Product Code: 10563**

Product Description: **FPC-5 Fire Extinguishant Controller for FP-20/ 40/ 80 with Bimetallic Sensor at 70°C**

■ **Product Code: 10564**

Product Description: **FPC-5 Fire Extinguishant Controller for FP-20/ 40/ 80 with Bimetallic Sensor at 80°C**

■ **Product Code: 10565**

Product Description: **FPC-5 Fire Extinguishant Controller for FP-20/ 40/ 80 with Bimetallic Sensor at 100°C**





For Generators  
FP-100S / 200S / 500S

■  
**Product Code: 10561**  
Product Description: **FPC-5 Fire Extinguishant Controller for FP-100S/ 200S/ 500S with Gland for LHD Cable**

■  
**Product Code: 10558**  
Product Description: **FPC-5 Fire Extinguishant Controller for FP-100S/ 200S/ 500S with Bimetallic Sensor at 60°C**

■  
**Product Code: 10566**  
Product Description: **FPC-5 Fire Extinguishant Controller for FP-100S/ 200S/ 500S with Bimetallic Sensor at 70°C**

■  
**Product Code: 10567**  
Product Description: **FPC-5 Fire Extinguishant Controller for FP-100S/ 200S/ 500S with Bimetallic Sensor at 80°C**

■  
**Product Code: 10568**  
Product Description: **FPC-5 Fire Extinguishant Controller for FP-100S/ 200S/ 500S with Bimetallic Sensor at 100°C**

For Generators  
FP-1200 / 2000 / 3000 /  
4200 / 5700

■  
**Product Code: 10562**  
Product Description: **FPC-5 Fire Extinguishant Controller for box-type Generators with Gland for LHD Cable**

■  
**Product Code: 10559**  
Product Description: **FPC-5 Fire Extinguishant Controller for box-type Generators with Bimetallic Sensor at 60°C**

■  
**Product Code: 10569**  
Product Description: **FPC-5 Fire Extinguishant Controller for box-type Generators with Bimetallic Sensor at 70°C**

■  
**Product Code: 10570**  
Product Description: **FPC-5 Fire Extinguishant Controller for box-type Generators with Bimetallic Sensor at 80°C**

■  
**Product Code: 10571**  
Product Description: **FPC-5 Fire Extinguishant Controller for box-type Generators with Bimetallic Sensor at 100°C**

# Bulb Thermal Actuator (BTA)



## FEATURES

- According to BSEN12259, UL199, LPCB 291a/02
- Temperature rating 57°C, 68°C, 79°C, 93°C, 141°C, 182°C

## PRODUCT OVERVIEW

The activation of the FirePro condensed aerosol unit is achieved thermally by the use of the Bulb Thermal Actuator (BTA).

There are two models of the BTA: the short type used by the cylindrical types of Condensed Aerosol Fire Extinguishing units, and the long type used by the box type Condensed Aerosol Fire Extinguishing units.

## Short BTA

For Generators FP-20T / 20TH /  
40T / 80T / 100S / 200S / 500S

■ 57°C

**Product Code: 10549**

Product Description: **Bulb Thermal  
Actuator Short for cylindrical-type  
Generators at 57°C**

■ 68°C

**Product Code: 10550**

Product Description: **Bulb Thermal  
Actuator Short for cylindrical-type  
Generators at 68°C**

■ 79°C

**Product Code: 10551**

Product Description: **Bulb Thermal  
Actuator Short for cylindrical-type  
Generators at 79°C**

■ 93°C

**Product Code: 10552**

Product Description: **Bulb Thermal  
Actuator Short for cylindrical-type  
Generators at 93°C**

■ 141°C

**Product Code: 10553**

Product Description: **Bulb Thermal  
Actuator Short for cylindrical-type  
Generators at 141°C**

■ 182°C

**Product Code: 10271**

Product Description: **Bulb Thermal  
Actuator Short for cylindrical-type  
Generators at 182°C**

## Long BTA

For Generators FP-1200T / 2000T /  
3000T / 4200T / 5700T / 1200TS /  
2000TS / 3000TS / 4200TS / 5700TS

■ 57°C

**Product Code: 10599**

Product Description: **Bulb Thermal  
Actuator Long for box-type  
Generators at 57°C**

■ 68°C

**Product Code: 10600**

Product Description: **Bulb Thermal  
Actuator Long for box-type  
Generators at 68°C**

■ 79°C

**Product Code: 10601**

Product Description: **Bulb Thermal  
Actuator Long for box-type  
Generators at 79°C**

■ 93°C

**Product Code: 10602**

Product Description: **Bulb Thermal  
Actuator Long for box-type  
Generators at 93°C**

■ 141°C

**Product Code: 10603**

Product Description: **Bulb Thermal  
Actuator Long for box-type  
Generators at 141°C**

■ 182°C

**Product Code: 10604**

Product Description: **Bulb Thermal  
Actuator Long for box-type  
Generators at 182°C**



# Section E



Cables &  
Accessories

# Fire Resistant Cables

## ■ Cable 2x1 mm

**Product Code: 10247**

**Product Description: Fire Resistant Cable 2x1 mm**

## ■ Cable 4x1 mm

**Product Code: 10248**

**Product Description: Fire Resistant Cable 4x1 mm**

## ■ Armoured Cable 2x1 mm

**Product Code: 10249**

**Product Description: Armoured Cable 2x1 mm**



## FEATURES

- LPCB (568a/01) and UL 13 (QPTZ.E345186) Approved
- Conductors: Solid (Class 1). Copper conductor to BS EN 60228
- Outer Sheath: LSZH Sheath type LTS3, Max HCL emission @ 800C
- Core identification: Following BS 7629: 1997, 2 cores + drain wire

## PRODUCT OVERVIEW

These special multi-core cables are used for fire resistance and circuit integrity and essentially to prevent life from smoke and noxious fumes and where sensitive equipment may be damaged by acid forming gases.

# Cable Glands

**Product Code: 10063**

**Product Description: Cable Glands Nickel Plated M16**

**Product Code: 10064**

**Product Description: Cable Glands Nickel Plated M20**



## FEATURES

- EN50262 Approved
- Tapered rings
- Santoprene rubber seal (Polyolefin) for IP68 protection

## PRODUCT OVERVIEW

Glands for use with screened cable are designed to connect the screen of the cable to the enclosure screening system.

# Aluminium Cable Clip

**Product Code: 10153**

**Product Description: Self Adhesive Aluminium Cable Clip 6mm**

**Product Code: 10154**

**Product Description: Self Adhesive Aluminium Cable Clip 6mm**



## FEATURES

- Self-adhesive
- Light and flexible
- Forms strong bond with any smooth surface such as metal, plastic, glass, wood, etc.

## PRODUCT OVERVIEW

Self-adhesive aluminium clips which provide a quick and economical solutions to various wiring problems.

# Magnet with threaded stem

**Product Code: 10640**

Product Description: **Mounting**

**Magnet for cylindrical-type  
Generators (GTN-25)**



## FEATURES

- Material: NdFeB
- Coating: Nickel-plated
- Steel: Q235
- Magnetisation: N42

## PRODUCT OVERVIEW

Magnets will substitute the screws necessary for installing / fixing the cylindrical FirePro Fire Extinguishing Condensed Aerosol units. The magnets can be used for the mounting of all cylindrical FirePro Generators



# Termination Box

**Product Code: 10491**

Product Description:

**LHD Cable Termination Box  
(MK1282 Termination Box)**



## FEATURES

- End of line termination box for fire resistant cables and linear heat detector cables.

## PRODUCT OVERVIEW

The MK1282 termination box is suitable for terminating the linear heat detector cable and contributes in the prevention of unwanted short circuits by preventing cable exposure to the installation environment.

# Simulation Lamp

**Product Code: 10332**

Product Description:

**Simulation Lamp  
(B3441 / 24V, MES 1.2W)**



## FEATURES

- FirePro Generator simulation lamp

## PRODUCT OVERVIEW

Simulates the characteristics of the Condensed Aerosol Generator unit. Suitable for system commissioning and system maintenance.

# 3VDC Battery

**Product Code: 10524**  
**Product Description:**  
**3VDC Battery CR2-BL1**



## FEATURES

- UL Approved
- Chemical System: Lithium / Manganese Dioxide (Li/MnO<sub>2</sub>)
- Designation: IEC-CR2
- Operating Temperature: -40°C to 60°C
- Typical Capacity: 800 mAh (to 2.0 volts)
- Max Discharge: 1000 mA continuous (2500 mA pulse)

## PRODUCT OVERVIEW

The CR2 Battery can be used with the FPC-4RM and FPC-5 units.

# 7Ah 12V Battery

**Product Code: 10199**

**Product Description:**

**7Ah 12V Battery**

**24-107F PS7.5L-12**



## FEATURES

- UL Approved (BAZR2.MH28792)
- Classification: "SAL"
- Nominal Voltage: 12.0 Volts
- Typical Capacity: 7.5Ah
- Max Discharge: 113A/5S

## PRODUCT OVERVIEW

The sealed lead acid batteries provide standby power to the fire alarm and extinguishant control panels in the event of mains failure.



# Section F



Detection,  
Warning Devices,  
Manual Call Points &  
Power Supply Units

# Manual Extinguishant Disablement Switch



**Product Code: 10515**

**Product Description: Manual Extinguishant Disablement Switch (VF1832-10)**



## FEATURES

- UL (UOXX.S24832) Approved

## PRODUCT OVERVIEW

The Manual Extinguishant Disablement Switch has been designed to support UL 2775 and can be interfaced with the Sigma Series extinguishant panels.

# Abort Switch Surface Mount



**Product Code: 10423**

**Product Description: Abort Switch Surface Mount (VF1823-10)**



## FEATURES

- UL (UOXX.S24832) Approved
- Red hold SW

## PRODUCT OVERVIEW

The abort switch can be interfaced with the Sigma Series extinguishant panels.

# Conventional 6-inch Base for Detector

**Product Code: 10637**

Product Description:

**Conventional 6-inch Base for  
Detector (VF2051-00)**



## FEATURES

- UL (UROX.S6661) Approved
- Contains a security locking tab for tamper protection
- Alarm Current: 93mA (136mA @ 33V max.)
- SLC Loop Idle Current: 110  $\mu$ A
- Compatibility Identifier: HB-3

## PRODUCT OVERVIEW

The VF2051 Series is designed specifically for use with VES Conventional Models VF2032 Photoelectric Smoke Detector, VF2020 Fixed Temperature / Rate-of-Rise Heat Detector. The Base is an electronics-free 6" base featuring a plastic tamper-lock lug. Each base is equipped with a resistor.

# Conventional Photo Electric Smoke Detector

**Product Code: 10638**

Product Description:

**Conventional Photo Electric  
Smoke Detector  
(VF2032-00)**



## FEATURES

- FM & UL (UROX.S6661) Approved
- Low Profile - 1.8" high (with base)
- Highly stable operation, RF / Transient protection
- Low standby current, 45 $\mu$ A at 24VDC
- Two built-in power / alarm LEDs

## PRODUCT OVERVIEW

The VF2032 photoelectric smoke detector utilizes two bi-colored LEDs for indication of status. In a normal standby condition the LEDs flash green every 3 seconds. When the detector senses smoke and goes into alarm the status LEDs will turn red.



# Conventional Heat Detector

**Product Code: 10639**

**Product Description:**

**Conventional Heat Detector  
(VF2020-00)**



## FEATURES

- FM & UL (UQGS.S6660) Approved
- Choice of fixed temperature / rate-of-rise 135°C
- Low standby current, 35µA nominal
- Two built-in power / alarm LEDs for 360° viewing
- Power / alarm LEDs confirm detector status

## PRODUCT OVERVIEW

The VF2020 fixed temperature / rate-of-rise heat detectors are suited to detect the presence of slow or fast rising temperatures to burning combustibles. They are also suited for installation where high heat output fires are expected or in areas where ambient conditions would not allow use of other detection methods.

# Fire Alarm Bell

**Product Code: 10424**  
**Product Description:**  
**Fire Alarm Bell (GB6-24)**



## FEATURES

- UL (ULSZ.S3406) Approved
- Meets UL464 requirements
- High dbA output
- Electrical box UL listed for outdoor use
- Available in red metal finish

## PRODUCT OVERVIEW

The GB Series provide the durable and dependable operation required for life safety alarm systems. The GB Series is available in 6" housing and listed for indoor and outdoor applications. Bells must be used with the GBBB box for outdoor use.

# Horn Strobe

**Product Code: 10446**  
**Product Description:**  
**Horn Strobe (GEC24-15/75WR)**



## FEATURES

- UL (UVAV.S3834) Approved
- Synchronize strobe and/or horn with Gentex AVSM Control Module
- Switch selection for high or low dBA
- Switch for chime, whoop, mechanical and 2400Hz tone
- Surface mount with the GSB (Gentex Surface Mount Box)

## PRODUCT OVERVIEW

The Gentex GEC24-125/75WR Low-frequency Horn Strobe (red) offers dependable audible and visual alarms, a low current draw, and a minimum flash rate of 1 Hz regardless of input voltage.

# Gas Release Sign



**Product Code: 10227**

Product Description:

**Gas Release Sign (FL-24)**



**Product Code: 10226**

Product Description:

**Gas Release Sign -  
Waterproof (FL-65)**



## FEATURES

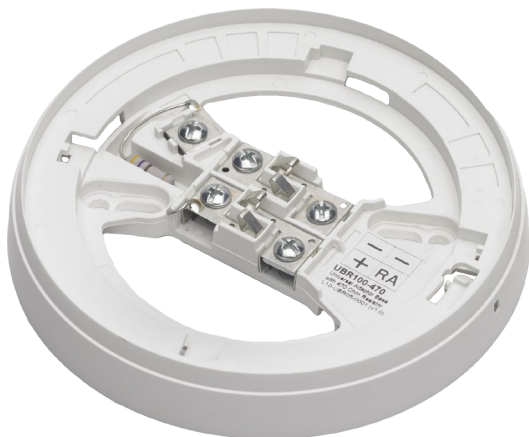
- Operating voltage: 12-24V DC
- Current consumption: 70mA
- Material of construction: PC/ABS
- FL-65 IP rate: IP42

## PRODUCT OVERVIEW

Alarm light of an operating voltage of 12-24V DC for connection to extinguishing panel. It is equipped with 4 LEDs as a light source and provides a high light performance with especially low consumption. The packaging also includes a 'STOP GAS' sticker. A weatherproof version is also available with a protection rate of IP42. The product is compliant to the European Standard EN54.

# Conventional Base for Detector

**Product Code: 10192**  
**Product Description:**  
**Conventional Base**  
**for Detector (UBR100)**



## FEATURES

- LPCB (928e) & VDS Approved
- Secure and reliable cable termination
- A useful terminal provides remote indicator output
- Low insertion force for detector
- Operating voltage 12-24V DC

## PRODUCT OVERVIEW

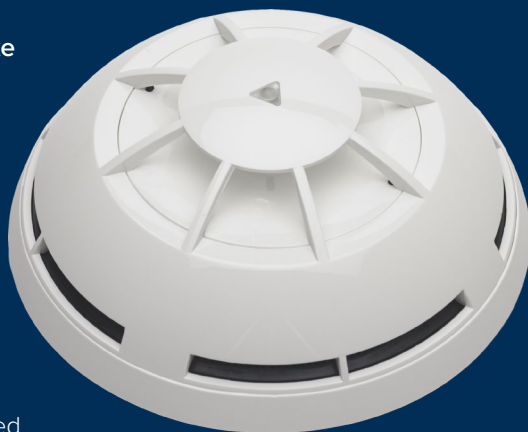
The UB100 Series is designed specifically for use with the conventional Model S1000 Photoelectric Smoke Detector, S3500 Fixed Temperature / Rate-of-rise Heat Detector. Available with deep base (DBS100) and relay base (BLR100)

# Conventional Smoke Photo Detector

**Product Code: 10193**

Product Description:

**Conventional Optical Smoke Detector (S1000)**



## FEATURES

- LPCB (928e) & VDS Approved
- Central LED providing 360° visibility
- Operating voltage 10-30V DC
- Low standby current: 60µA at 24V DC
- Built-in alarm LED

## PRODUCT OVERVIEW

This type of detector continuously samples the air in the protected area to provide the earliest warning of fire and yet offers a high level of false alarm rejection. This device benefits from a “Double Dust Trap” incorporated into the design of the smoke entry ports, hence limiting potential contamination and extending periods between maintenance without compromising sensitivity of response. These detectors are designed for open area protection and must only be connected to conventional control panels.

# Conventional Thermal Detector Rate-of-rise

**Product Code: 10195**

Product Description:

**Conventional Thermal Detector  
Rate-of-rise (S3500A1R)**



## FEATURES

- LPCB (928e) & VDS Approved
- Central LED providing 360° visibility
- Operating voltage 10-30V DC
- Low standby current: 60µA at 24V DC
- Built-in alarm LED

## PRODUCT OVERVIEW

The S3500A1R conventional thermal detector is designed to detect fire conditions from rate-of-rise temperature and provide high immunity to false alarms. This type of detector continuously samples the temperature variation in the protected area to provide the earliest warning of fire and yet offers a high level of false alarm rejection. These detectors are designed for open area protection and must only be connected to conventional control panels.

# Conventional Thermal Detector (HT)

**Product Code: 10194**

Product Description:

**Conventional Thermal Detector  
Heat (S3500/B)**



## FEATURES

- LPCB (928e) & VDS Approved
- Central LED providing 360° visibility
- Operating voltage 10-30V DC
- Low standby current: 60µA at 24V DC
- Built-in alarm LED



## PRODUCT OVERVIEW

The S3500/B Conventional Thermal Detector is designed to detect fire conditions from fixed temperature thermal conditions and provide high immunity to false alarms. This type of detector continuously samples the temperature variation in the protected area to provide the earliest warning of fire and yet offers a high level of false alarm rejection. These detectors are designed for open area protection and must only be connected to conventional control panels. These detectors are designed for open area protection and must only be connected to conventional control panels.



# Linear Heat Detection Cable

**Product Code: 10244**

Product Description: **Linear Heat Detection Cable TH68°C (TH68N)**

**Product Code: 10245**

Product Description: **Linear Heat Detection Cable TH88°C (TH88N)**

**Product Code: 10246**

Product Description: **Linear Heat Detection Cable TH105°C (TH105N)**



## FEATURES

- FM, UL & ATEX Approved
- Low cost and fast response
- Not affected by RFI or EMC
- Not restricted by local ambient temperatures
- Section replacement of sensor cable after alarm

## PRODUCT OVERVIEW

Linear Heat Detection Cables are manufactured as two twisted and tensioned tin-plated copper-coated steel conductors. Around each conductor is extruded temperature sensitive material which softens at its pre-determined temperature, and the conductors come together to produce the required alarm signal.

Sensor cables are suitable for use within dirty, dusty, damp environments, areas of limited access and surveillance. As a combined cable and detector, the sensor cable can be installed close to the risk or at ceiling or roof height.

# Linear Heat Detector Interface Unit

**Product Code: 10665**

**Product Description: Linear Heat Detector Interface Unit ZI-01 1 Channel**

**Product Code: 10650**

**Product Description: Linear Heat Detector Interface Unit ZI-02 2 Channel**

**Product Code: 10666**

**Product Description: Linear Heat Detector Interface Unit ZI-07 Host Unit**



## FEATURES

- FM, UL & ATEX Approved
- Color-coded LCD Display
- Solid state volt-free contacts for Alarm & Fault signalling
- Connection to 2000m / 6500ft Proline TH Sensor Cable
- MTBF of more than 5,000,000 hours

## PRODUCT OVERVIEW

With almost all Industrial alarm conditions able to be detected as an overheat (pre-fire / nil flame) situation, accurate Alarm Point Location feature (which can be repeated onto any customer control panel) assists with rapid alarm identification, helping prevent the progression of the alarm condition to a combustible level.

# STI ReSet

**Product Code: 10187**

**Product Description: Isolation Switch  
Blue (RPBS11CL)**



**Product Code: 10365**

**Product Description: Release Button  
Yellow (RPYS11CL)**



**Product Code: 10680**

**Product Description: Alarm Call Point  
Red (RPRS11HF)**



## FEATURES

- Positive activation that mimics the feel of breaking glass
- Visible warning flag confirms activation
- Simple key to reset operating element
- No glass elements to break, lose or incorrectly fit during installation
- Double pole version

## PRODUCT OVERVIEW

The ReSet is a unique switch that mimics the feel of breaking glass while offering the benefits and environmental advantages of a resettable operating element. It uses a simple yet ingenious patented mechanism which consists of a rigid plastic operating element and an over center spring mechanism. This arrangement provides real action upon operation and simulates break glass activation.

An activation indicator drops into view at the top of the window after the ReSet has been operated. The unit is then simply reset with a key and is again ready for use.

# Fire Alarm Bell 6 Inch



**Product Code: 10200**  
**Product Description: Fire Alarm  
Bell 6 Inch (MBM246)**



## FEATURES

- High sound output
- Low current consumption
- Simple Installation
- Multi-fixing base plate

## PRODUCT OVERVIEW

All internal bells incorporate highly efficient rotary centrifugal movements combining high sound output with low current consumption.

# Flashni

## External Sounder Beacon

**Product Code: 10207**

Product Description: **External Sounder Beacon 18-30V DC (Flashni)**

**Product Code: 10417**

Product Description: **External Sounder Beacon 12V DC (Flashni)**



## FEATURES

- High output sounder beacon
- Automatic sounder synchronisation
- Choice of lens / sounder color
- Base compatible with RoLP & Solex beacons
- Lockable base

## PRODUCT OVERVIEW

The Flashni is an audible and visual device which requires a single installation point. This greatly reduced installation and costs and is much less obtrusive than two separate devices.

Versions available with sounder and beacon linked or with separate terminals for independent operation.

# Roshni Low Profile Electronic Sounder



**Product Code: 10209**

**Product Description: Low Profile  
Electronic Sounder - Roshni  
(MWS423)**



## FEATURES

- LPCB Approved(378b/02)
- High sound output
- Low current consumption
- 32 tones (user selectable)
- Second tone for two-stage alarms
- Lockable base

## PRODUCT OVERVIEW

The Roshni Low Profile (RoLP) is the fire alarm market's leading conventional sounder, although it finds uses in much wider applications such as security, general signaling and process alarms. The wide operating voltage and range of tones available to the user make this flexible sounder supremely adaptable in even its most basic forms.

# Speech Dialler

**Product Code: 10196**  
**Product Description:**  
**Speech Dialler (SD1+)**

**Product Code: 10198**  
**Product Description:**  
**Speech Dialler (SD3+)**



## FEATURES

- Works in conjunction with all quality control panels
- 8-character Starburst LCD display
- Up to 40 seconds recording time
- Integral microphone and loudspeaker
- Call abort

## PRODUCT OVERVIEW

The SD1+ sends pre-recorded voice messages over a conventional telephone line whenever external equipment triggers one of its four inputs. Any equipment that has a voltage-free contact as an output can provide an input to the unit. Each input (A, B, C, D) triggers the corresponding message A, B, C or D.

The SD3+ can communicate via PSTN line, a GSM network or both together, with the user's option of which one should dial out first.

The unit is fully self-programmable letting you enter up to 10 contact numbers, select the type of message (voice or SMS), which should go to each, and allowing you to store spoken or text messages to suit your requirements.

# Boxed Power Supply Unit

**Product Code: 10518**

**Product Description:**

**Kentec Boxed Power Supply  
Unit 2.5A 24V (K25250M2)**



## FEATURES

- BSI Approved (KM 73505) LPCB Approved
- Chassis only or enclosure mounted with battery space
- 230V input
- Regulated, true 24V output
- House up to 7Ah batteries
- Status indicators for monitored faults

## PRODUCT OVERVIEW

Syncro Power fully certified to EN54-4 power supplies provide a stable and fully regulated, true 24V output for fire alarm system applications under all power conditions.

The unique regulation techniques ensure that even when running on standby batteries, a stable 24V supply is available to all parts of the system, ensuring that all 24V powered devices connected are supplied with optimum power.



# Power Supply

**Product Code: 10314**

**Product Description:**

**Power Supply Unit 2.5A 24V  
Unboxed (82425S)**



## FEATURES

- IMQ-CSV Certified according to UNI EN60950
- Reduced size
- High efficiency
- Recharge Pb batteries
- Available output current: 1.5A, 2.5A, 5A

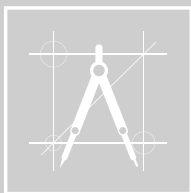
## PRODUCT OVERVIEW

Switching Power Supply Unit with 27.6 Vcc output voltage available with output current 2.5A. High efficiency and minimum heat losses, thanks to the switching technology. The unit is protected from overloads, polarity reversals and short circuits.

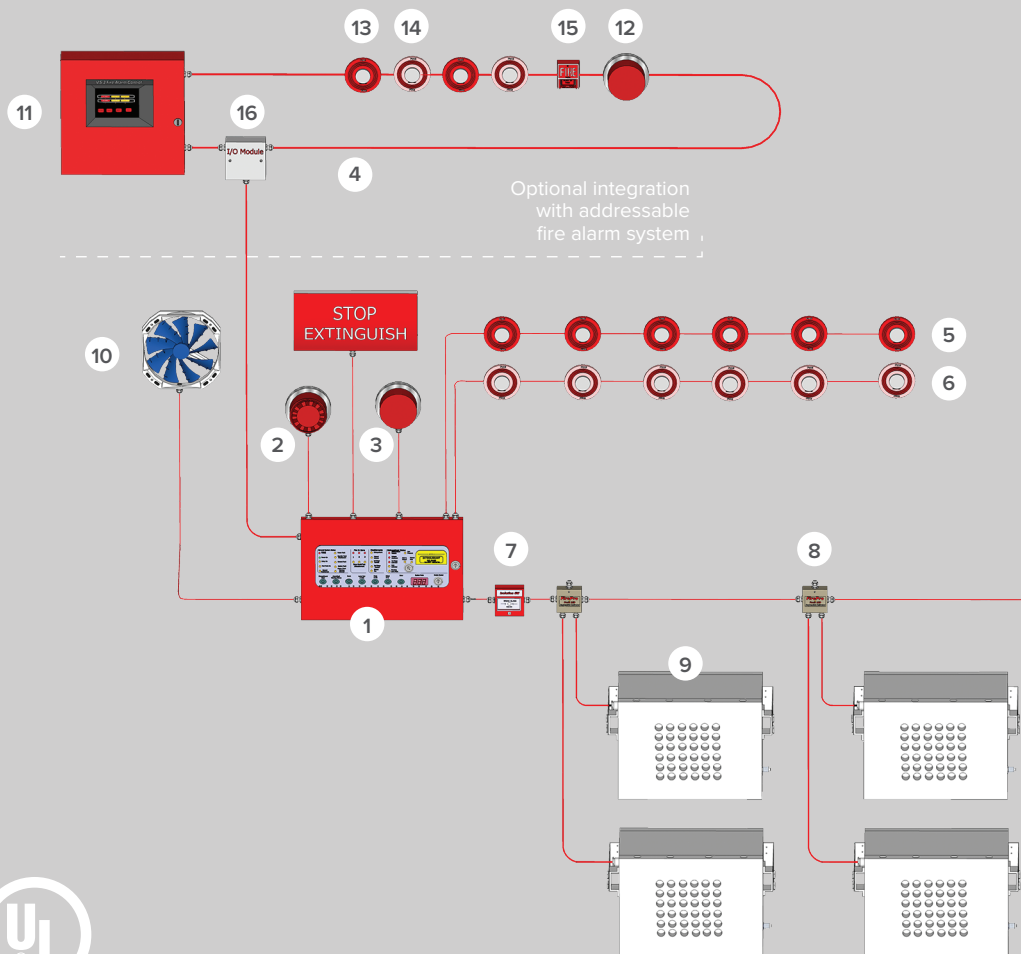
The mains presence is indicated by a green coloured LED.

Specifically recommended in systems that require small to medium-size power supply units or case suited to accommodate concentrators or junction boxes.

It is useful for the supply of panels, sounders and bells.



# Total Flooding Pre-engineered System Design

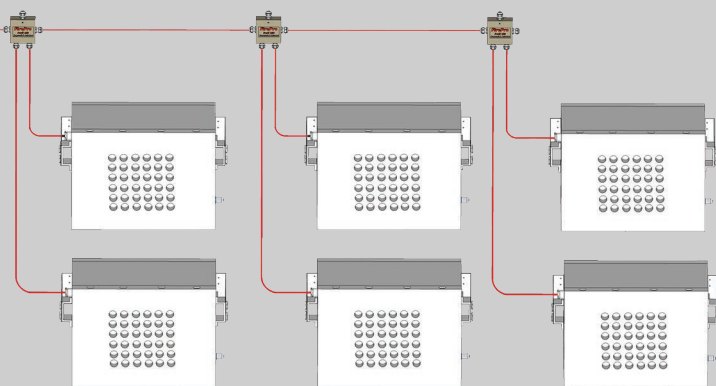


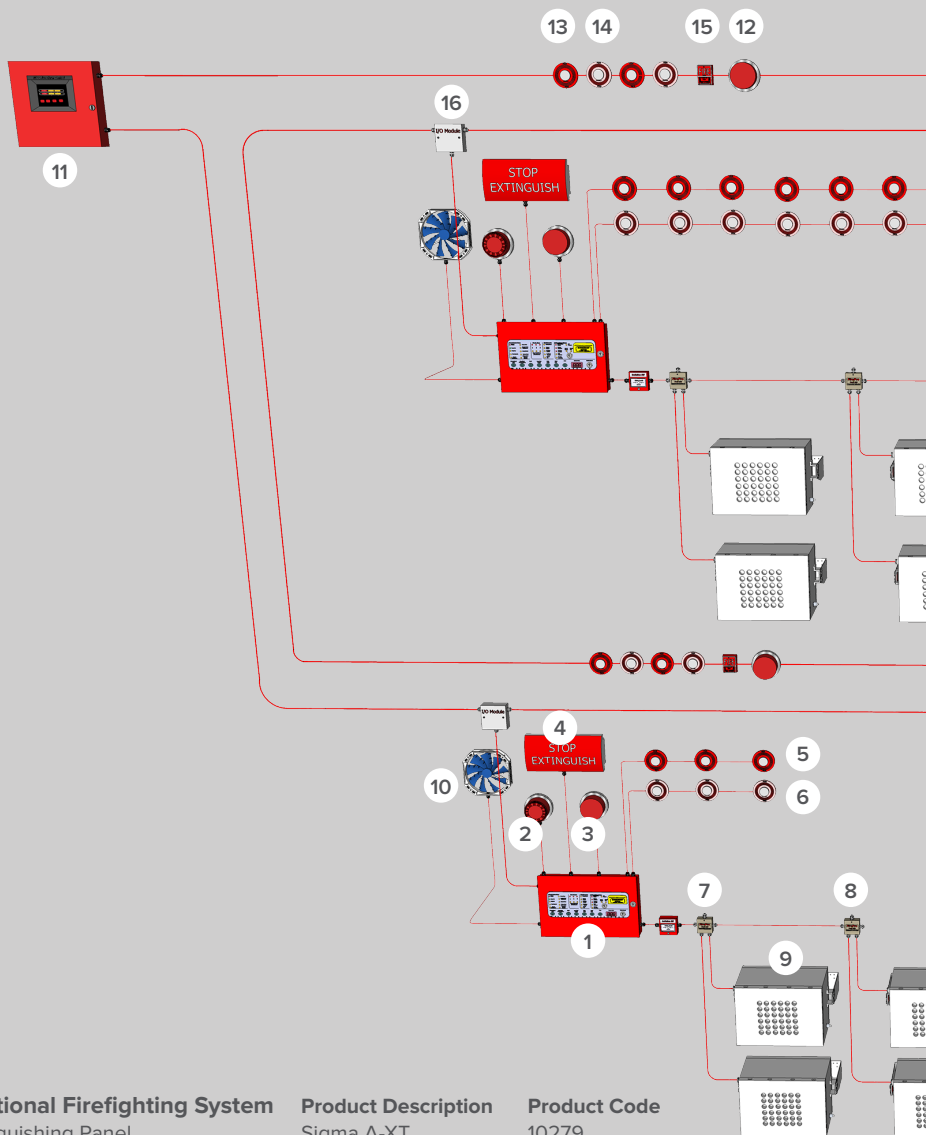
### Conventional Firefighting System

	Product Description	Product Code
1. Extinguishing Panel	Sigma A-XT	10279
2. 1 <sup>st</sup> Stage Sounder	GB6-24	10424
3. 2 <sup>nd</sup> Stage Sounder	GEC24-15/75WR	10446
4. Extinguishing Release Indication	FL-24	10227
5. Zone 1, Smoke Detectors	VF2032-00	10638
6. Zone 2, Heat Detectors	VF2020-00	10639
7. System Isolation Switch	VF1832-10	10515
8. Interface units	FP-SA/GEN3.0	10173
9. Aerosol Generators	FP-3000S	10393
10. Extractor Fan		

### Addressable Fire Alarm System

11. Addressable Fire Alarm Panel
12. Sounder
13. Smoke Detectors
14. Heat Detectors
15. Manual Call Points
16. Input / Output supervise module





### Conventional Firefighting System

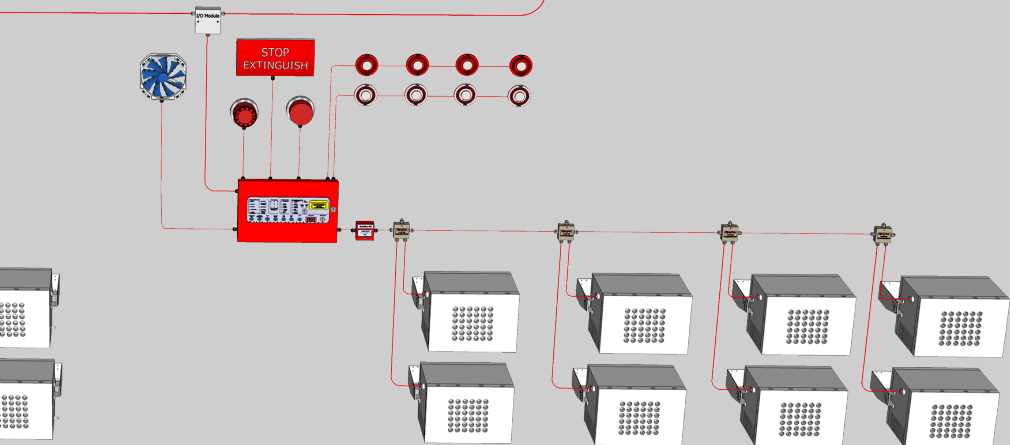
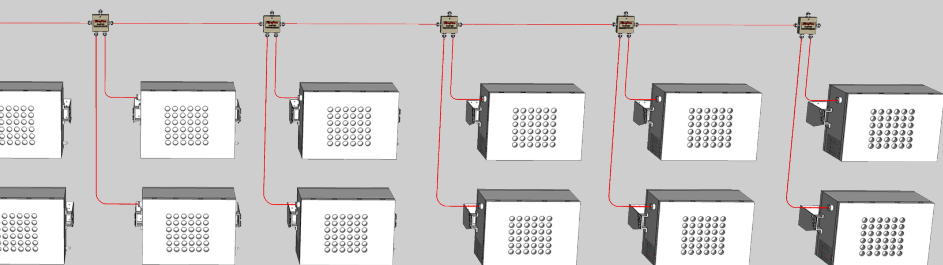
1. Extinguishing Panel
2. 1<sup>st</sup> Stage Sounder
3. 2<sup>nd</sup> Stage Sounder
4. Extinguishing Release Indication
5. Zone 1, Smoke Detectors
6. Zone 2, Heat Detectors
7. System Isolation Switch
8. Interface units
9. Aerosol Generators
10. Extractor Fan

### Product Description

Sigma A-XT  
GB6-24  
GEC24-15/75WR  
FL-24  
VF2032-00  
VF2020-00  
VF1832-10  
FP-SA/GEN3.0  
FP-3000S

### Product Code

10279  
10424  
10446  
10227  
10638  
10639  
10515  
10173  
10393



## Addressable Fire Alarm System

11. Addressable Fire Alarm Panel
12. Sounder
13. Smoke Detectors
14. Heat Detectors
15. Manual Call Points
16. Input / Output supervise module

FirePro.

“The FirePro complete system solutions, bespoke service and superior quality provide a measurable advantage.”





# Fire

**FirePro.**

6 Koumandarias Str. Tonia Court, 6th Floor  
PO Box 54080, 3720 Limassol, CY Europe  
Tel.: +357 25 379 999 mail@firepro.com

**[www.firepro.com](http://www.firepro.com)**

FirePro Systems Ltd 2015-2016