

REAR ELEVATION 02



- ANGLE RIDGE TO MATCH SLATE - DRY VERGE DETAIL
- SANDSTONE EFFECT CAPPING WITH SOAKER TO GABLE
- MANMADE SLATE 300X600mm
- UPVC SOFFIT AND FASCIA BOARD IN ANTHRACITE WITH BRET MARTIN DEEPSTYLE 115mm HERITAGE CAST IRON EFFECT GUTTERING
- CORBEL DRESSED STONE TO ACCOMMODATE GABLE CAPPING
- SEMI COURSED SANDSTONE WITH JUMPERS - 3 BED THICKNESS WITH LARGE JUMPERS DRESSED FACE - LOCAL SOURCE TO MATCH VILLAGE STONEMWORK
- DRESSED CUT STONE QUOINS 220mm x 300mm
- DRESSED PROUD KEYSTONE DETAIL ABOVE WINDOW
- REAR ELEVATION ALL OPENING WINDOWS UPVC CASEMENT WINDOWS IN ANTHRACITE GRAY
- DRESSED CUT STONE CILS
- FORMA SLATTED WOOD ECO COMPOSITE CLADDING IN BLACK ASH REAR ELEVATION STEP OUT
- ALUMINUM THREE PANEL BI-FOLD DOOR

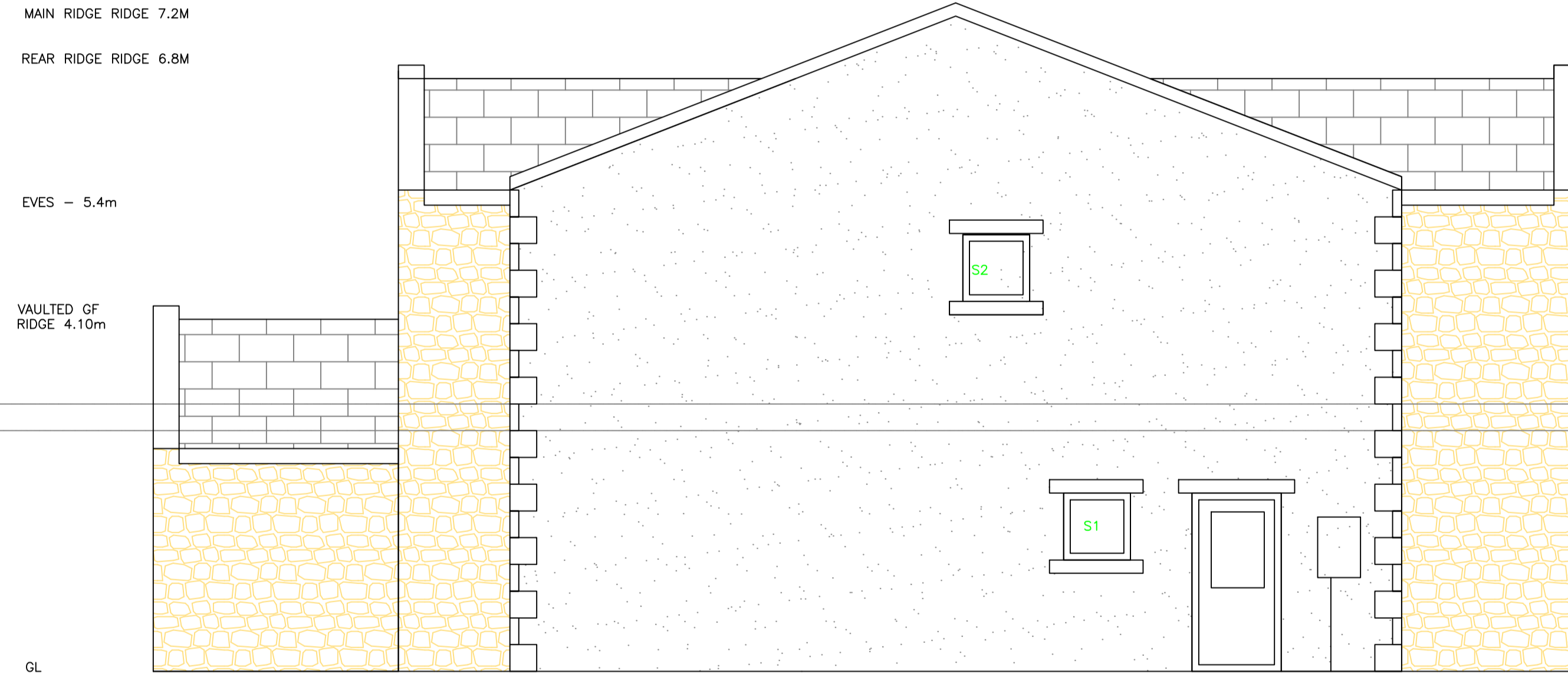
FRONT ELEVATION 01



- ANGLE RIDGE TO MATCH SLATE - DRY VERGE DETAIL
- SANDSTONE EFFECT CAPPING WITH SOAKER TO GABLE
- MANMADE SLATE 300X600mm
- UPVC SOFFIT AND FASCIA BOARD IN ANTHRACITE WITH BRET MARTIN DEEPSTYLE 115mm HERITAGE CAST IRON EFFECT GUTTERING
- CORBEL DRESSED STONE TO ACCOMMODATE GABLE CAPPING
- SEMI COURSED SANDSTONE WITH JUMPERS - 3 BED THICKNESS WITH LARGE JUMPERS DRESSED FACE - LOCAL SOURCE TO MATCH VILLAGE STONEMWORK
- DRESSED CUT STONE QUOINS 220mm x 300mm
- DRESSED PROUD KEYSTONE DETAIL ABOVE WINDOW
- FRONT ELEVATION ALL OPENING WINDOWS UPVC HERITAGE SLIDING SASH WINDOWS IN ANTHRACITE GRAY
- DRESSED CUT STONE CILS
- COMPOSITE FRONT DOOR IN ANTHRACITE
- BLUE ENGINEERING BRICK 3 COURSE BELOW DAMP PROOF COURSE

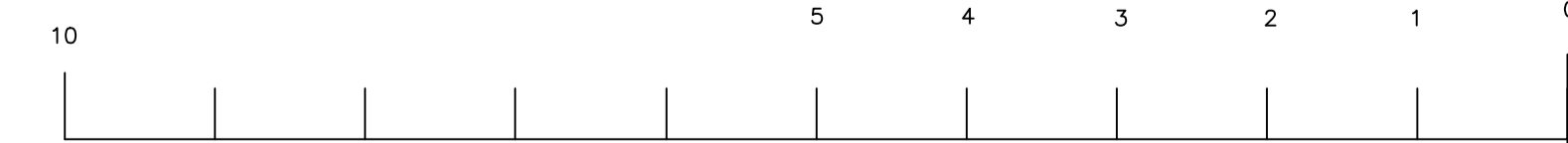
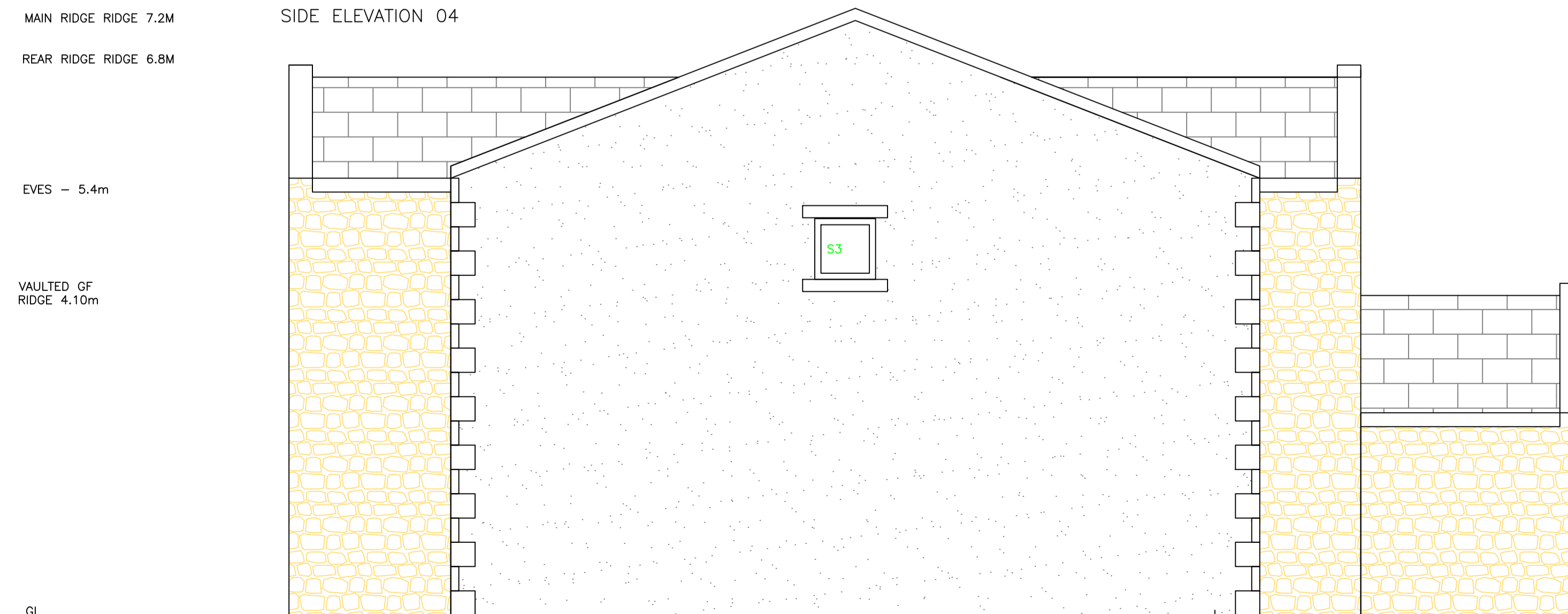
REV - 3 NOTES
 AIR SOURCE HEAT PUMP SPECIFIED -
 TIMBER FRAME - SUSTAINABLE SOURCE TIMBER MATERIAL
 INSULATION - RECYCLED NEWSPAPER -
 FRONT ELEVATION - FULL STONE AND STONE DETAILING
 LOBBY FIRST FLOOR WINDOW CHANGED TO MATCH

SIDE ELEVATION 03



- ANGLE RIDGE TO MATCH SLATE - DRY VERGE DETAIL
- SANDSTONE EFFECT CAPPING WITH SOAKER TO GABLE
- MANMADE SLATE 300X600mm
- UPVC SOFFIT AND FASCIA BOARD IN ANTHRACITE WITH BRET MARTIN DEEPSTYLE 115mm HERITAGE CAST IRON EFFECT GUTTERING
- CORBEL DRESSED STONE TO ACCOMMODATE GABLE CAPPING
- SEMI COURSED SANDSTONE WITH JUMPERS - 3 BED THICKNESS WITH LARGE JUMPERS DRESSED FACE - LOCAL SOURCE TO MATCH VILLAGE STONEMWORK
- DRESSED CUT STONE QUOINS 220mm x 300mm - PROUD TO RENDER ELEVATION FOR DEFINITION
- SANDSTONE CUT HEAD
- FRONT ELEVATION ALL OPENING WINDOWS UPVC HERITAGE SLIDING SASH WINDOWS IN ANTHRACITE GRAY
- DRESSED CUT STONE CILS
- VPI RENDER OVER BLOCK - SCRAPPED FAUX STONE TEXTURE PEARL GRIS COLOUR TO GABLE ELEVATION
- COMPOSITE FRONT DOOR IN ANTHRACITE
- INSET MAINS ELECTRIC BOX
- SIDE ELEVATION CASEMENT WINDOW WITH STONE CIL AND CUT STONE HEAD
- PRIVACY GLASS - SAND BLASTED

SIDE ELEVATION 04



| Itemref | Quantity | Title/Name, designation, material, dimension etc | Article No./Reference |
|-------------------|------------------|--|-----------------------|
| Designed by MH | Checked by MH | Approved by - date MH | Filename SATLEY |
| Date 6.2.2023 | | Scale 1:50 @ A1 DIMS IN MM | |
| BELL BLUE LTD | | TYPE 1 ELEVATION | |
| 01.A ELEVATION | | Edition 1 | Sheet 1/1 |