

- ◆ For low-budget applications
- ◆ Programmable conversion range
- ◆ 2-wire 4-20mA output
- ◆ Serial interface for configuration
- ◆ Low profile
- ◆ Vibration-proof design
- ◆ IP65 box and Ex housing available

**FUNCTION**

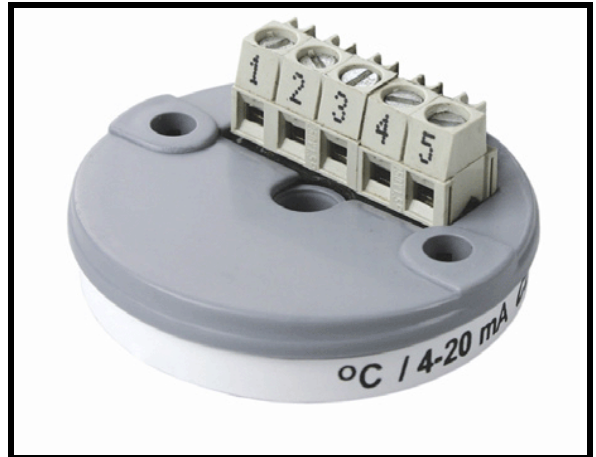
BASI's temperature transmitter BTT781 is part of a revolutionary new project for the smallest (in-head) and cheapest programmable transmitter. It has a input accepting Pt100 RTD and a 4-20mA 2-wire output linearly proportional to the measured temperature. This model allows on-site selection of input range and conversion direction as well as sensor failure reaction and no user calibration is necessary to be provided. BTT781 is available in a case for mounting inside sensor protection head type "B", in a watertight box with high protection class. The RS232 serial interface allows fast and easy configuration. Thanks to the combination of performance, reliability, simplicity, flexibility, and low price, the BTT781 transmitter is easy-to-use and very widely applicable.

**SPECIFICATIONS GENERAL****INPUT**

Pt100 (w=1.385), 3-wire : Min -50 – max + 200 deg C  
 Input/Output Conversion : Direct or reverse, programmable

**OUTPUT**

Current (2-wire) : 4-20 mA, max load 800Ω at 24V  
 RTD/TC output : Proportional to temperature  
 Sensor failure : < 3.8 mA or > 20.2 mA, programmable

**ACCURACY**

Measurement error : +/-0,1 % from span  
 Nonlinearity : +/-0,1 % from span  
 Temperature drift : 0.01 % from span for 1 °C  
 RTD 3-wire line compensation: Up to 25 Ω per wire

**SERIAL INTERFACE**

Interface type : RS232, requiring special cable  
 Configuration software : "BASI TraCon", free

**POWER SUPPLY**

For standard type : 10 to 32VDC  
 Admissible variations : 1 Vp-p at 50Z  
 Max. line load : Max. 800Ω at 24V/20mA

**OPERATING CONDITIONS**

Operating temperature: -30 to 70 °C  
 Operating humidity: 0 to 95%RH, non-condensing

**DESIGN AND MATERIALS**

Case material: Plastic  
 Wiring: Screw terminals  
 Central opening(in-head): Diam 5mm  
 Mounting in head: Diam.44 x19mm (type B) IP20  
 80x80x60mm (type D) IP65  
 Interface cable type IP65 and head mount : K1, K11U

**ORDERING CODE**

**BTT781**

**MOUNTING**

B Head type  
 D IP65 box  
 E Ex housing  
 (Mounting kit only)