



A Q U A
CHILDREN'S HOMES





About us

Aqua Childrens' Homes was formed with a great goal in mind: to be a light of hope and compassion for society's most vulnerable members—the children.

Pearl Mundicha Katerere, a visionary philanthropist with a heart filled with enormous love and concern for the welfare of children, founded Aqua Childrens' Homes. Aqua Childrens' Homes was born from her idea of a place where these little souls may find peace, caring, and possibilities to develop despite their difficult circumstances.

OUR APPROACH

Aqua Childrens' Homes offers a comprehensive approach to child development under the supervision of a trained team of specialists. Each child is paired with a kind carer who functions as a mentor, friend, and role model. Carers make certain that each child receives individual attention, emotional support, and a sense of belonging.



PROTECTIVE AND NURTURING ENVIRONMENT:

Aqua Children's Homes recognises the significance of providing special needs children with a nurturing and secure environment. Our residences are designed to be secure, accessible, and stimulating, nurturing a sense of belonging. In addition, our committed staff members provide around-the-clock care, ensuring that the physical and emotional well-being of each child is always a top priority.

HOLISTIC METHOD OF CARE:

Aqua Childrens' Homes takes a holistic approach to care, recognising that each child is unique and has particular requirements. Our team of expert carers, therapists, and educators collaborates to develop individualised care plans that incorporate physical, emotional, and cognitive health. By contemplating all aspects of a child's development, Aqua Childrens' Homes provides comprehensive assistance that fosters growth and autonomy.



HOW WE SUPPORT:



Personal Care



Life Skills



Education and
School Support



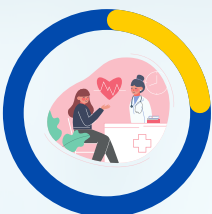
Transitioning



Emotional
Support



Recreational
Activities



Medical
Support



AUTISM CARE

Aqua Children's Homes is committed to providing quality support and care for autistic children. Aqua Childrens' Homes has established a specialised method to assure the well-being and development of these children based on a thorough knowledge of their specific requirements and problems.



OUR ENVIRONMENT

Every component of Aqua Childrens' Homes is meant to provide a caring and sensory-friendly environment. Our homes' physical layout is meticulously developed, taking into account aspects like lighting, colours, and noise levels, to produce a tranquil environment that encourages comfort and prevents sensory overload.

LEARNING DISABILITY CARE

Aqua Childrens' Homes is committed to providing children with learning impairments with steadfast support and care. We recognise the particular obstacles that these children encounter, and we have made it our aim to provide a compassionate and empowering atmosphere in which each child may flourish.

OUR HOLISTIC APPROACH

Aqua Childrens' Homes provides a strong focus on overall development in addition to academics. They provide a variety of therapeutic methods, including occupational therapy, speech and language therapy, and behavioural therapy, to suit each child's unique requirements. These treatments are intended to improve communication skills, fine and gross motor abilities, the management of problematic behaviours, and the promotion of independent living skills.



MENTAL HEALTH NEEDS CARE

Aqua Childrens' Homes is a caring organisation committed to providing great care to children with mental health needs. Aqua Children's Homes tries to promote the well-being and development of every child in their care by emphasising the creation of a caring and supportive atmosphere.

OUR APPROACH



Aqua Childrens' Homes understands the value of therapeutic approaches in fostering excellent results for children with mental health needs. Individual counselling, group therapy, art therapy, and play therapy are among the evidence-based treatments we provide. These therapy activities are carefully incorporated into the child's everyday routine, enabling them to explore their emotions, develop coping techniques, and strengthen their resilience.

PHYSICAL DISABILITY CARE

Aqua Childrens' Homes is committed to providing critical support and care to children with physical limitations. With a strong dedication to improving these children's lives, we provide a loving and inclusive atmosphere in which they may develop and attain their full potential.

NURSE LED CARE



The provision of specialised medical care is a key component of Aqua Childrens' Homes. They make certain that the children get proper medical care and have access to essential treatments, therapies, and assistive equipment. Whether it's physical treatment, occupational therapy, or speech therapy, the organisation attempts to provide a comprehensive approach to supporting the children's entire development.



Our referral process

Step 1

Send an email or phone referral to the Aqua Childrens' Homes referrals team.

Step 2

Our management team arranges and conducts an assessment.

Step 3

We provide feedback on whether or not our service can meet the individual's requirements.

Step 4

We construct a care plan based on the assessment results.

Step 5

Upon confirmation of placement acceptance, if admission is agreed upon, the referring team will coordinate transition arrangements.



A Q U A
CHILDREN'S HOMES

39b Trafalgar House 712 London Road, West
Thurrock, Essex, United Kingdom, RM20 3JT
