

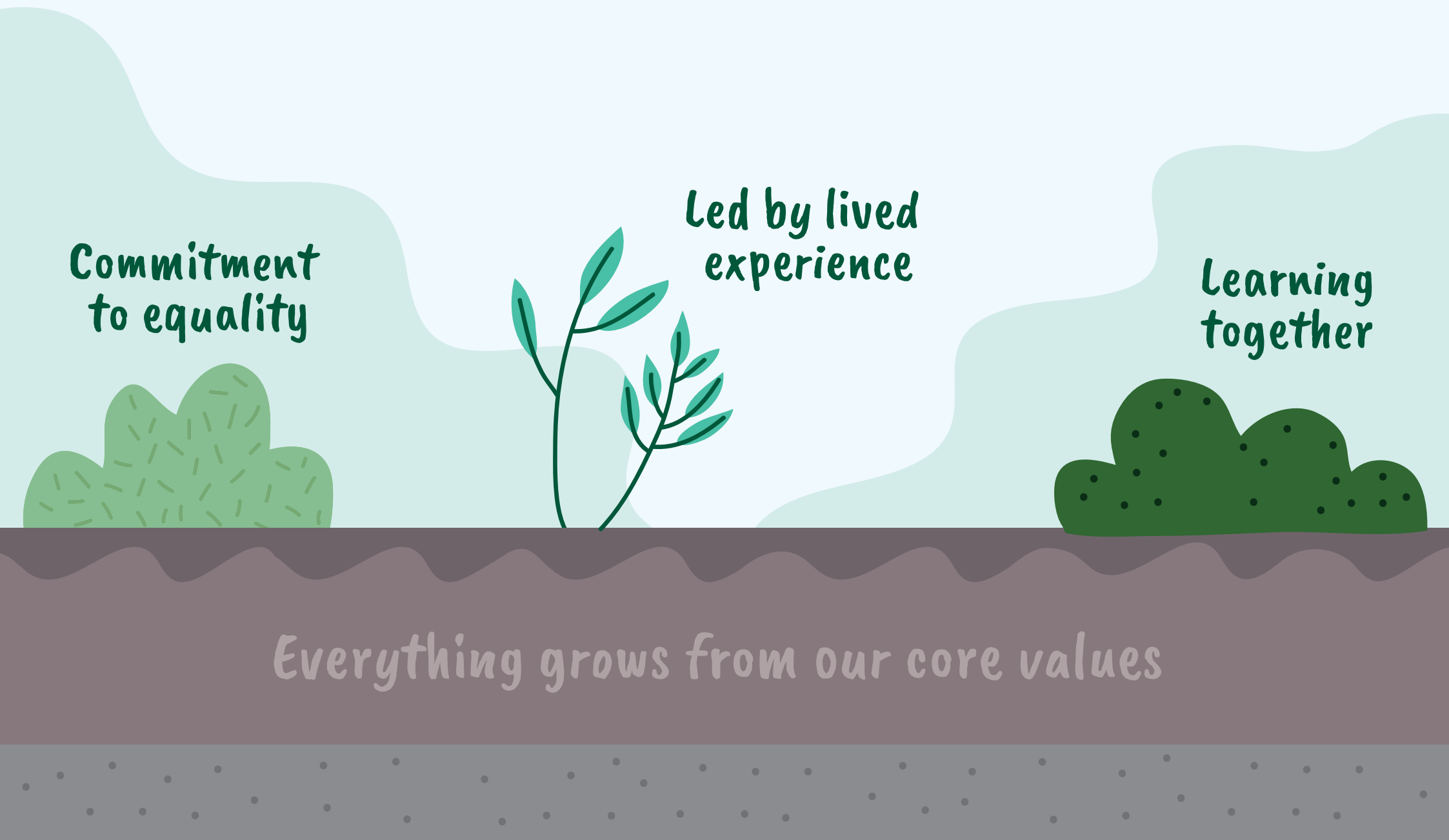
# Core values

Commitment  
to equality

Led by lived  
experience

Learning  
together

Everything grows from our core values



# Expectations

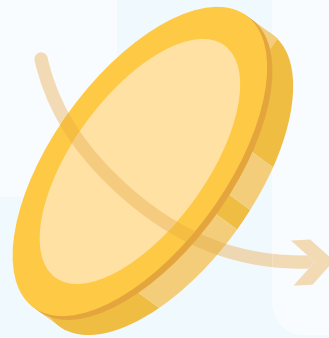
Points on which groups and individuals can challenge or be challenged

## Individuals

- Treated with dignity / treat others with dignity
- Your opinions are listened to / you listen to others
- The group will work with you to remove barriers to your involvement / Work with the group to remove barriers for yourself and others
- You can expect opportunities to gain skills and knowledge to play a role / Share learning with others and do best to play a role in the group

## Member groups

- Member groups must be led by lived experience
- Understand and sign up to the principle that they are there to enable individuals within their organisations to take part
- Groups have to take responsibilities to keep their members informed, feed in their views and work with them to remove barriers to their involvement
- Groups can expect support to carry out their responsibilities and opportunities share in learning
- Participate in our campaigns running local events either through activities or as part of our social media campaigns



2 Sided coin

## Questions

- Are we going to have a two tier membership?
- How are members going to prove they are led by lived experience
- What does a group or individual do if feel these are not been met?



# Structure



## Main group

### Role

- Agrees budget and workplans
- Oversees the sub groups

### Who

- Everyone who can / wants to attend

## Sub-groups

### Role

- Remit defined by workplan
- Reports back to main group
- Coordinate individual tasks

### Why

- Practical to make progress
- Allows greater opportunity for people to be involved based on strength and interest

### Who

- Individuals that have an interest or experience in the particular field

# Sub-groups

## Communications

**Facilitators:**  
@Thrive

This group shares APLE Activism and amplifies the voices of member groups. The group supports the campaign group to communicate learning and events connected to APLE Campaigns.

## Campaigns

**Facilitators:**  
@Community Organisers / @Expert Citizens / @HAL

This group coordinates the activism around the two main APLE Campaigns; Digital Divide and International Day for the Eradication of Poverty.

## Governance & Finance

**Facilitators:**  
@Thrive / @PTC

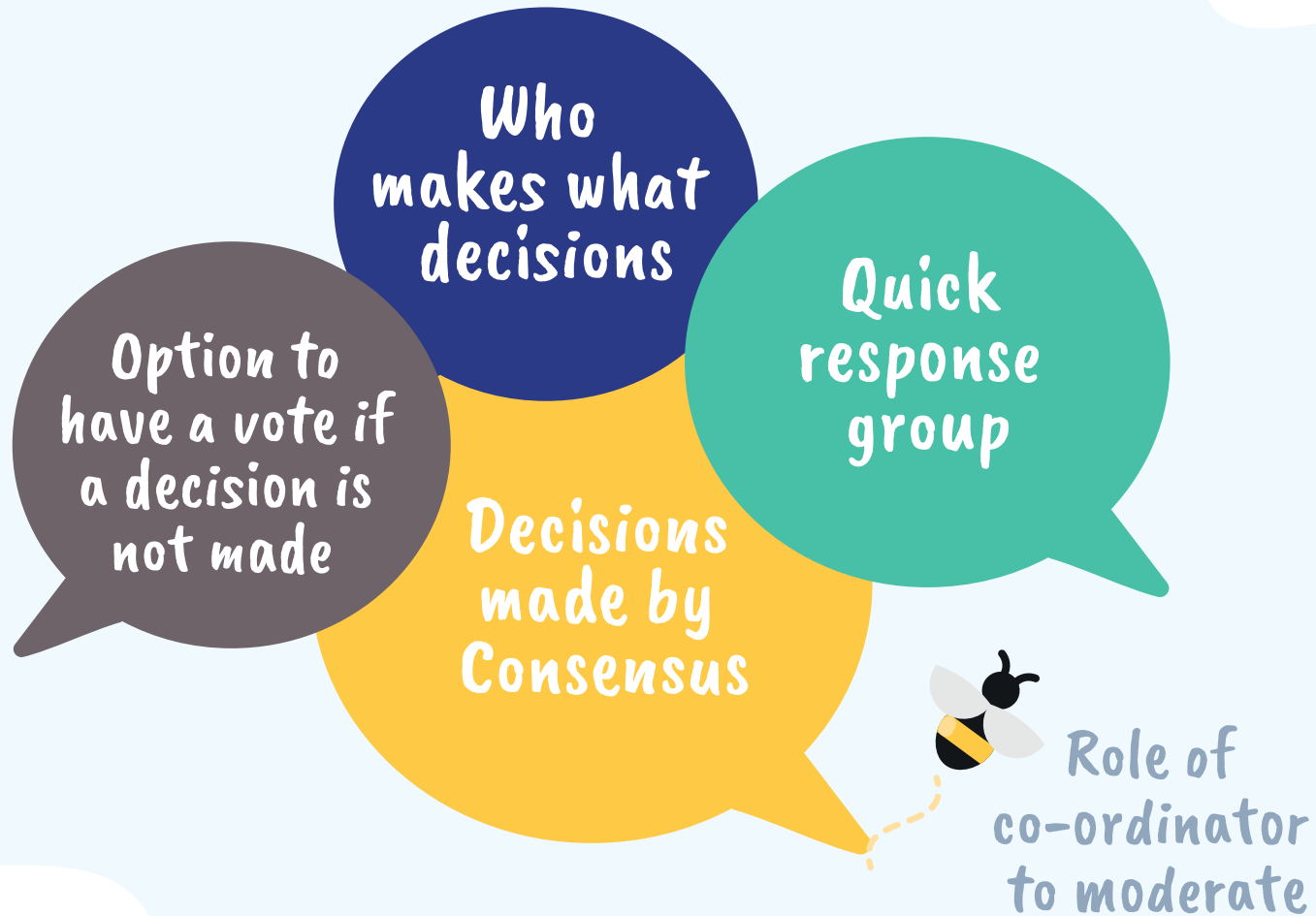
This group has developed the governance strategy for APLE Collective. This group is developing APLE Induction and APLE Good Governance Training. This group will explore APLE Collective charitable status.

## Learning together

**Facilitators:**  
@ATD Fourth World / @RAPAR (tbc)

This group is working with the governance group to develop APLE Induction and Good Governance Training but is looking more broadly at how we learn and how we might share learning together within the APLE Collective.

# Making decisions



## Questions

- What does consensus look like? When can the group move on with a way forward?
- Decision on a quick response group and remit?