

# a natural undertaking

## funerals celebrating life

### OUR LIST OF SERVICES AND PRICES FROM MARCH 2024

---

As a business we have always tried to be as transparent as possible with our pricing because understanding the cost of a funeral can be quite confusing.

Some services are provided by a funeral director but there are many services which are part of a funeral which are provided by third parties. These third parties will charge a range of fees for their services, and we have no control over what they charge. It's worth being aware too, that some things that you might pay for, could in fact be carried out by yourself or your friends.

We're always happy to talk these costs through but hope that you find the information in this booklet helpful in the first instance.

You will find the booklet divided into four different types of service:

---

#### 1) STANDARDISED PRICE LIST

Funeral Directors are required by law to display the "Standardised Price List". This list is formatted and described in a particular manner which cannot be changed. It is so that people can look at the prices of one funeral director and compare them with another. This list doesn't describe all the services that a funeral director can provide.

We support the initiative behind this but a simple price list doesn't describe the values of an organisation, how the family of the person who has died is looked after, or what level of service you can expect to receive.

Our commitment to you is a personal, independent service and you can see how this comes across through the reviews we receive. So as well as comparing prices, we would invite you to look at our reviews which you can find on google and also on our website.

---

#### 2) OUR SIMPLE FUNERAL

This includes everything you need to carry out a lower cost and personal funeral at a single location. You choose the time and date.

---

#### 3) OUR BESPOKE FUNERAL

Starting with a blank sheet of paper we find out what's important to you and help you craft a funeral according to your needs.

---

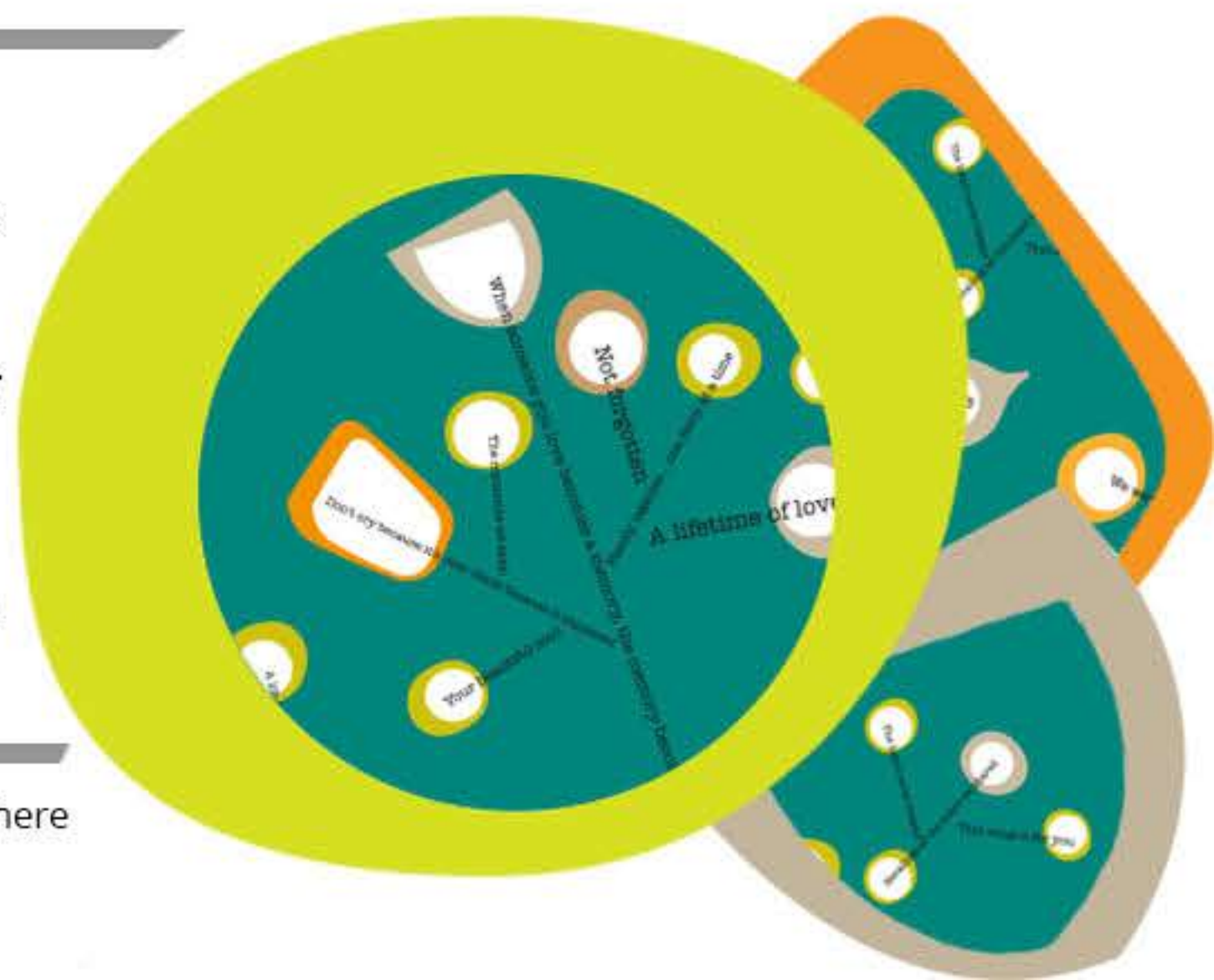
#### 4) OUR UNATTENDED FUNERALS

This could be a cremation or a burial. Often described as 'direct cremation' or 'direct burial'

This is where no family or friends attend the cemetery or crematorium. We choose the date and time but are always mindful of family circumstances. Families and friends often hold memorial services or family gatherings at a later date or in a venue other than the crematorium.

---

Our supplier costs can change throughout the year. We try to hold prices where we can, but please see our website for the most up to date prices.





## STANDARDISED PRICE LIST

All funeral directors are legally required to publish this Price List in this format for a standardised set of products and services. This is to help you think through your options and make choices, and to let you compare prices between different funeral directors (because prices can vary)

---

### ATTENDED FUNERAL (funeral director's charges only) £2,290

This is a funeral where family and friends have a ceremony, event or service for the deceased person at the same time as they attend their burial or cremation.

Taking care of all necessary legal and administrative arrangements	£850
Collecting and transporting the deceased person from the place of death (normally within 15 miles of the funeral director's premises) into the funeral director's care	£225
Care of the deceased person before the funeral in appropriate facilities. The deceased person will be kept at the funeral director's branch premises	£490
Providing a suitable coffin - this will be made from oak veneer or brown cardboard	£395
Viewing of the deceased person for family and friends, by appointment with the funeral director (where viewing is requested by the customer)	£105
At a date and time you agree with the funeral director, taking the deceased person direct to the agreed cemetery or crematorium (normally within 20 miles of the funeral director's premises) in a hearse or other appropriate vehicle	£225

---

### UNATTENDED FUNERAL

This is a funeral where family and friends may choose to have a ceremony, event or service for the deceased person, but they do not attend the burial or cremation itself.

<b>Burial (funeral director's charges only)</b>	<b>£1,540</b>
<b>Cremation (funeral director's charges plus the cremation fee)<sup>2</sup></b>	<b>£1,595</b>

---

### FEES YOU MUST PAY

For an Attended or Unattended burial funeral, the **burial fee**.<sup>1</sup>

In this local area, the typical cost of the burial fee for local residents is:	<b>£650-£1,197</b>
For a new grave, you will also need to pay for the plot; for an existing grave with a memorial in place, you may need to pay a removal / replacement fee. In addition, the cemetery may charge a number of other fees.	

For an Attended cremation funeral, the **cremation fee**.<sup>2</sup>

In this local area, the typical cost of a cremation for local residents is:	<b>£515-£967</b>
---	------------------

Please discuss any **specific religious, belief-based and / or cultural requirements** that you have with the funeral director

---

### ADDITIONAL FUNERAL DIRECTOR PRODUCTS AND SERVICES

This funeral director may be able to supply a range of optional, additional products and services, or to arrange (on your behalf) for a third party to supply them.

Examples include:

Additional mileage (price per mile)	£1.50
Additional transfers of the deceased person's body (eg to their home, to a place of worship etc) (price per transfer)	£200
Collection and delivery of ashes	£5
Embalming	Prices on Request
Funeral Officiant (eg celebrant, minister of religion etc)	Prices on Request
Services supplied outside of normal office hours	Prices on Request

The funeral director can give you a full list of what they can supply. They are likely to charge for these additional products and services, so you may choose to take care of some arrangements without their involvement, or you can use a different supplier.

---

<sup>1</sup> This fee (which is sometimes called the interment fee) is the charge made for digging and closing a new grave, or for reopening and closing an existing grave

<sup>2</sup> In England, Wales and Northern Ireland, you will usually need to pay doctors' fees as well. This is the charge for two doctors to sign the Medical Certificates for Cremation



# OUR SIMPLE FUNERAL

---

## OUR SIMPLE FUNERAL (Cremation, Natural Burial or Burial)

£2,185

Our simple funeral includes everything you need to carry out a lower cost and personal funeral at a single location. You choose the time and date.

### OUR SIMPLE FUNERAL INCLUDES:

- Meeting with you safely in person or via telephone or video conferencing such as Zoom to discuss all your options and how we can work to support you.
- Collection of the person who has died within a 20 mile radius.\* Additional miles are charged at £1.50 per mile.
- Care of the person until the day of the funeral. Washing and dressing is included.
- A manilla (brown) cardboard, solid Paulownia or oak veneer coffin (there is a £40 supplement if you would like white or green cardboard or a shroud).
- Use of one of our converted white electric Nissan Leaf cars as the hearse.
- Help with all the paperwork and administration of the funeral.
- Our recommendations on suitable locations and suppliers.
- A unique webpage with funeral details for you to share with friends & family, including RSVP service if required.
- Our care and attention throughout, including unlimited phone calls.
- 2 members of our team to support you on the day of the funeral at a single location
- Collection and delivery of ashes within a 20 mile radius.
- Access to SAIF Care bereavement support.

---

### IT DOES NOT INCLUDE:

Cremation / burial fees  
Doctors' certificates  
Minister / celebrant fees

In this area, the cost of a cremation (single slot) for local residents ranges between:

£515-£967

In this area, the cost of a burial / interment \* for local residents ranges between:

£650-£1,197

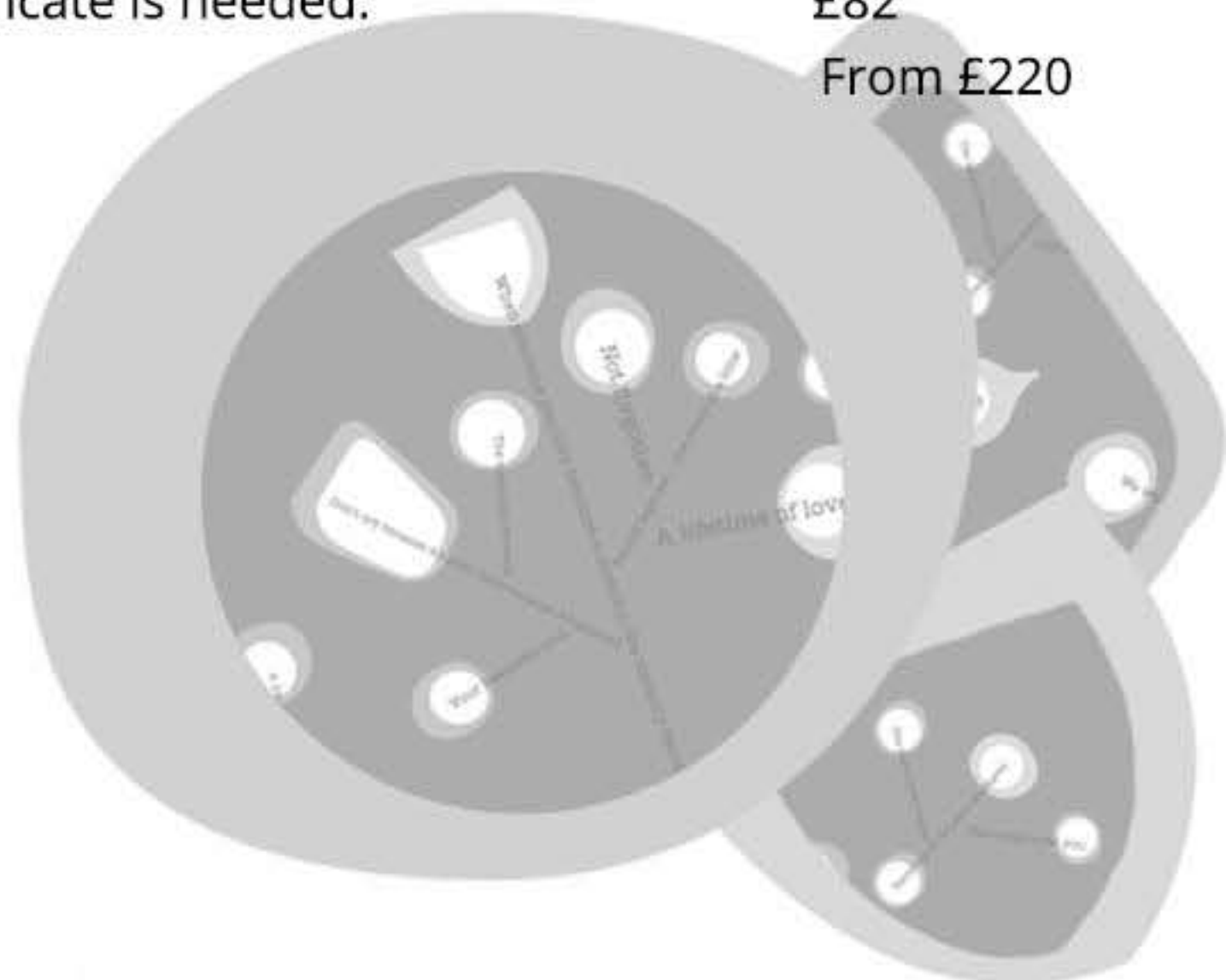
Doctors' certificates : as at 1st March 2024, only one certificate is needed.

£82

Minister / celebrant fees vary:

From £220

\* For a new grave, you will also need to pay for the plot; for an existing grave with a memorial in place, you may need to pay a removal / replacement fee. In addition, the cemetery may charge a number of other fees.





# OUR BESPOKE FUNERAL

---

## OUR BESPOKE FUNERAL (Cremation, Natural Burial or Burial)

At A Natural Undertaking we try to keep things as simple as possible whilst remaining flexible; giving you the choices you need. As a result our bespoke costs are made up of 3 key elements:

---

### 1) OUR PROFESSIONAL FEES WHICH COVER: £1,745

- An initial meeting with you safely in person, or via telephone or video conferencing such as Zoom, to discuss all your options and how we can work to support you.
  - Drawing up of a written funeral arrangement plan which we have agreed with you, with clear and transparent pricing.
  - Help with all of the legal and administrative arrangements for the funeral.
  - Collection of the person who has died within a 20-mile radius. Additional miles are charged at £1.50 a mile.
  - Care of the person until the day of the funeral. Washing and dressing included.
  - Our recommendations on suitable locations and suppliers.
  - A unique webpage with funeral details for you to share with friends & family, including RSVP service if required.
  - Our care and attention throughout the process, including unlimited phone calls and additional meetings in person or via video conferencing.
  - Collection and delivery of ashes within a 20-mile radius.
  - 2 members of the team to support you on the day of the funeral at a single location.
  - Access to SAIF Care bereavement support.
- 

### 2) YOUR PERSONAL CHOICES (detailed prices on next page)

Coffin and urn choices, transport, spending time with the person who has died, someone to lead the ceremony, flowers, musicians, order of service booklets: just some examples of where you have different choices you can make.

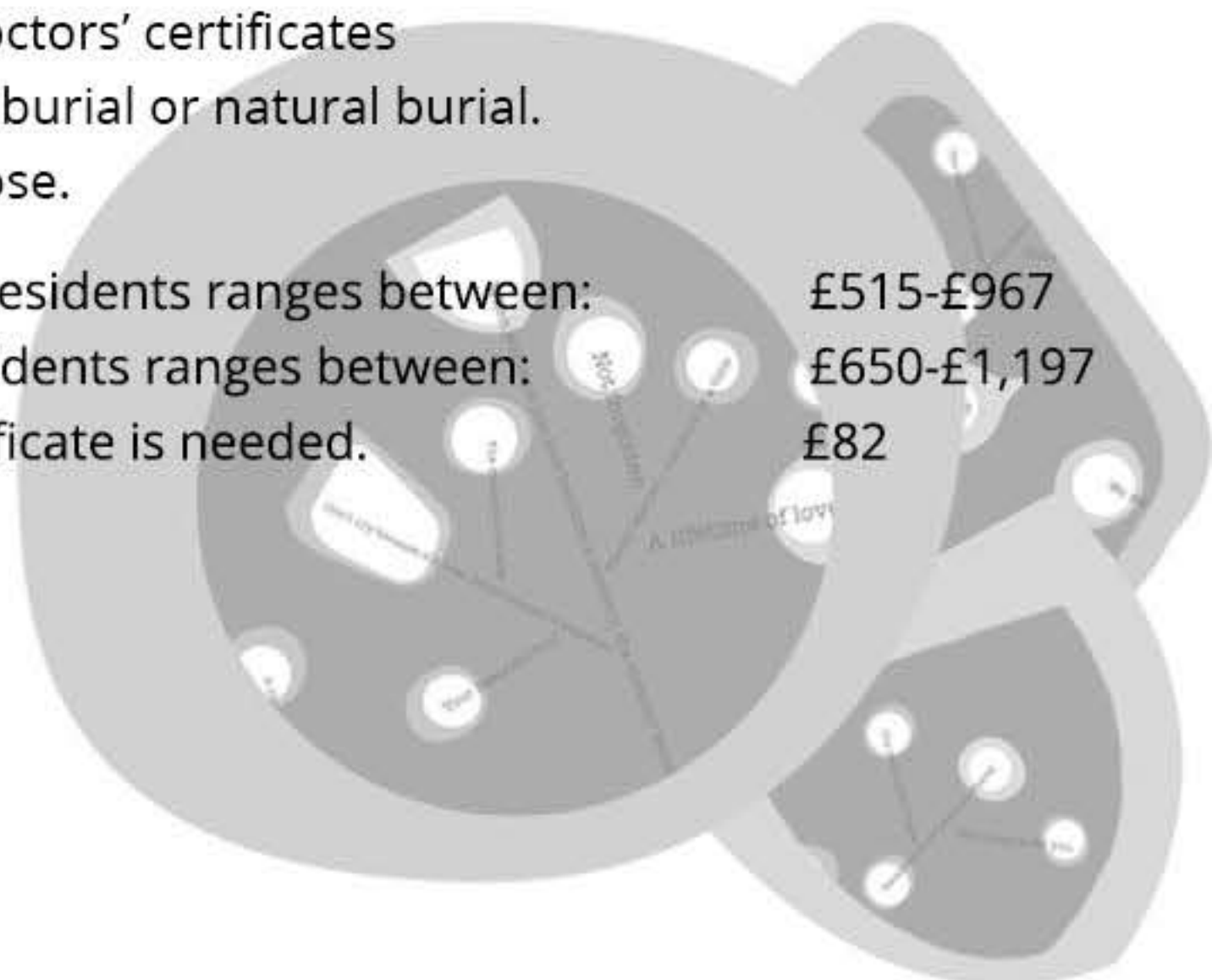
---

### 3) THIRD PARTY COSTS / DISBURSEMENTS

Third party costs include cremation or burial costs and doctors' certificates  
Costs vary depending on whether you choose cremation, burial or natural burial.  
These fees also vary depending on the locations you choose.

In this area, the cost of a cremation (single slot) for local residents ranges between:	£515-£967
In this area, the cost of a burial / interment * for local residents ranges between:	£650-£1,197
Doctors' certificates : As at 1st March 2024, only one certificate is needed.	£82

\* For a new grave, you will also need to pay for the plot; for an existing grave with a memorial in place, you may need to pay a removal / replacement fee. In addition, the cemetery may charge a number of other fees.





## YOUR PERSONAL CHOICES (2)

The list below contains a taster of what we provide. More options are on our website.

### Caring for the person who has died

Spending time with the person at our Kings Heath premises,	£100
Bringing the person home, or into church the day before the funeral	£200

### Coffins

#### Coffin choices may not always be available

#### Special requests or outsize coffins may cost a little more.

Plain cardboard: brown / white	£355 / £395
Traditional oak veneer: varnished or unvarnished	£395
Solid Paulownia (untreated, unwaxed, sustainable)	£395
Eco2 willow	£525
Bamboo: Teardrop	£645
Cane or Banana leaf	£645
Willow: traditional or round	£645
Printed cardboard: catalogue or bespoke design	£625
Woollen coffin: white / grey	£875 / £925
English Somerset Willow: plain / bespoke	£775 / £825
Solid oak - traditional	from £830
Solid pine	£675

### No Coffin

Bamboo shroud (cotton-like fabric)	£350
Handmade Felt Leaf Cocoon	from £975

### Transport

Small converted white electric Nissan Leaf hearse	£200
Large white electric Nissan Leaf hearse	£240
Black hearse	from £275
Black limousine	from £275
White or silver hearse	from £400
White or silver limousine	from £325
Other vehicles such as VW hearses, motorcycle sidecar, vintage lorry, horse drawn carriages, people carriers & many other options. These vary in price. Please see our website for more details.	

### The Funeral

Additional charge for ceremony and committal in separate locations or separate days	up to £300
Minister / Celebrant / Humanist	from £220
Additional coffin bearers	£50 each
Flowers, catering, venue hire, musicians	as required
Design & print: orders of service, invites, attendance cards, luggage tags...	as required

### Urns

Scatter tube, catalogue or bespoke design	£40- 80
Wicker / willow	£70-100
Wooden caskets, veneer or solid wood	£70-100

There are many other different types of urns available whether biodegradable, porcelain or metal. We can help find an appropriate option for you.

# UNATTENDED CREMATION

---

## UNATTENDED CREMATION

£1,595

An unattended cremation (often called Direct Cremation) is a simple and respectful cremation without a funeral. The costs are lower because we choose the date, time and location of the cremation, there is no funeral service, and family do not attend.

Our unattended cremation fee includes:

- Collection of the person who has died during working hours (Monday-Friday 8.30am-5pm) within a 20 mile radius. \* Additional miles charged at £1.50/mile.
  - Looking after the person who has died until the day of the funeral.
  - A standard sized cardboard coffin.
  - Cremation fee.
  - Return of the ashes to you within a 20 mile radius. Ashes can be couriered in the UK for an additional cost.
  - Access to SAIF Care bereavement support.
- 

## IT DOES NOT INCLUDE:

Doctors' certificates: As 1st March 2024 only one certificate is needed.

£82

Out of hours collection fee

£225

If you need us to collect the person who has died out of hours we will charge £225. If they have died at home or in a care home it's worth taking a moment to decide whether there is a rush for us to come and collect them. Once you have notified the GP and someone has been to certify the death call us on 0121 444 0437 and we can talk you through the options.

---

## ADDITIONAL, IF DESIRED:

Washing & dressing

£100

Visiting in family room

£105


Webpage, with photo to let people know about the funeral plans and send messages if they wish.

£15

A witnessed Unattended Cremation – this is only available at Waseley Hills Crematorium, at either 9 or 9.30am, Monday to Thursday. Limited to 8 people, you can sit in the chapel and watch the committal, and have a piece of music of your choice for up to 10 mins.

£200

There is no service and we still choose the date and time of the cremation.





# UNATTENDED BURIAL

---

## UNATTENDED BURIAL

£1,540

An unattended burial, just like an unattended cremation, is a simple and respectful burial without a funeral. The costs are lower because we choose the date, time and location of the burial, there is no funeral service, and family do not attend.

Our unattended burial fee includes:

- Collection of the person who has died during working hours (Monday-Friday 8.30am-5pm) within a 20 mile radius. \* Additional miles charged at £1.50/mile.
- Looking after the person who has died until the day of the funeral.
- A standard sized oak veneer or cardboard coffin.
- Taking the person to the burial ground in a hearse or other appropriate vehicle
- Up to six people to carry and lower the coffin into the grave.
- Access to SAIF Care bereavement support.

---

## IT DOES NOT INCLUDE:

- The cost of a grave, the interment (gravedigging) fee or any memorial stone / plaque  
The cost of a new grave in this area (for local residents) ranges between: £1,650-£4,835  
The cost of an interment fee in this area (for local residents) ranges between: £650- £1,197
- Out of hours collection fee £225  
If you need us to collect the person who has died out of hours we will charge £225.  
If they have died at home or in a care home it's worth taking a moment to decide whether there is a rush for us to come and collect them. Once you have notified the GP and someone has been to certify the death call us on 0121 444 0437 and we can talk you through the options.

---

## ADDITIONAL, IF DESIRED:

- |  |      |
|--|------|
| Washing & dressing   | £100 |
| Visiting in family room  | £105 |
| Webpage, with photo to let people know about the funeral plans and send messages if they wish. | £15  |



## FUNERAL PLANNING

We realise that for many people it can be useful to talk about and plan your own funeral. There are several ways we can support you:

Funeral wishes document  
Personal funeral planning sessions

Free  
from £75

---

## HOME FUNERALS

Sometimes families want to take care of the arrangements themselves but just need a little bit of help. We're always very happy to chat on the phone, or in person about what's possible.

---

## A BIT MORE ABOUT US

A Natural Undertaking is an independent company owned and managed by two ladies: Carrie Weekes and Fran Glover. We've been open since 2014 and have helped hundreds of families to create simple and bespoke funerals in all manner of venues and locations.

We're the only independent funeral director in Kings Heath and we help people in all areas of Birmingham and sometimes beyond.

Our focus is on ensuring that you know what your choices are, and then on helping you make the decisions that are right for you.

People tell us that we've created a really warm and welcoming space at our premises in Kings Heath - so if you have any questions about death and funerals, whether you're planning ahead or need to arrange a funeral now - please feel free to call or pop by for a chat.

---

## DISCLOSURE

We have no financial interest in any price comparison websites.

We do not make donations, contributions or pay gratuities to any third party connected with the funeral sector such as carehomes, hospices or hospitals.

---

## PAYMENT INFORMATION AND TERMS

When we meet with you we will provide a written estimate of costs for you.

We accept payment by credit or debit card, cheque, cash or online bank transfer. Due to the level of disbursements (payments to crematoria or cemeteries) we always request a deposit. The deposit is the disbursement amount in full plus 50% of all other known costs. Full payment is requested on or by the day of the funeral.

An interest rate of 3% may be charged on any sums which remain unpaid at the expiry of 5 days from the date on which they became due. Detailed information is provided in our Terms and Conditions of Business.

We understand that payment of a funeral can often be challenging - please talk to us about any issues you may be facing.

Be aware that crematoria and cemeteries may have additional charges such as cancellation fees, weekend fees, fines where services over-run and fees for photo and video tributes. For burials, non-resident fees may apply.



Tel: 0121 444 0437 Address: 290 Vicarage Rd, Kings Heath, Birmingham, B14 7NH  
email: [funerals@anaturalundertaking.co.uk](mailto:funerals@anaturalundertaking.co.uk) [www.anaturalundertaking.co.uk](http://www.anaturalundertaking.co.uk) Twitter: @newundertaking

A Natural Undertaking Limited. Registered in England & Wales. Company Number 09034336.