



## Halvkupler



AS.SG-50139-001 (venstre)  
AS.SG-50139-002 (højre)



AS.SG-50428-001 (venstre)  
AS.SG-50428-002 (højre)



AS.SG-50427-001 (venstre)  
AS.SG-50427-002 (højre)



AS.SG-50426-001 (venstre)  
AS.SG-50426-002 (højre)

## Runde kupler



AS.SG-50083 Ø133 mm



AS.SG-500761-003



AS.SG-50070 Ø113 mm



AS.SG-500428



AS.SG-500761-002



AS.SG-50072 Ø133 mm

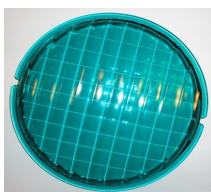


AS.SG-500321

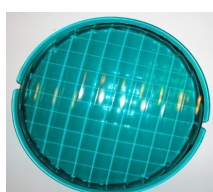


AS.SG-500426

## Front glas



AS.SG-50592-002 Ø225 mm



AS.SG-50592-002 Ø184 mm



AS.SG-50597-003 Ø225 mm



AS.SG-50597-003 Ø184 mm



AS.SG-50597 Ø225 mm



AS.SG-50597 Ø184 mm



AS.SG-50797 Ø225 mm



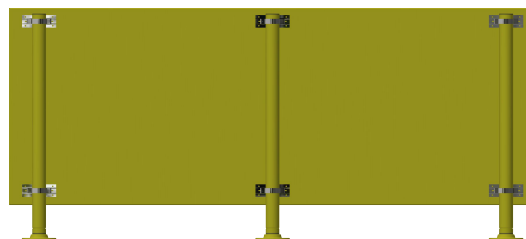
AS.SG-50797 Ø184 mm



Halogen pærer



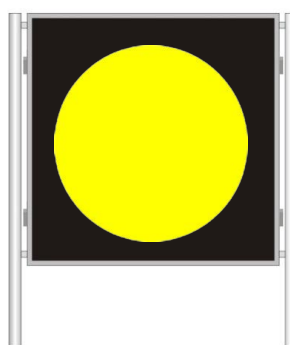
Skilte mandatory & information



Runway Distance Marker



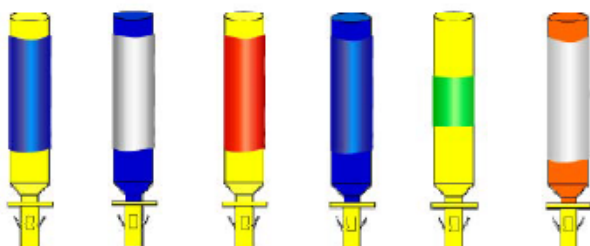
Arrestor Gear Marker



Bird Spike



LineLaner





Wind Direction Indicator



Windposer, rød/hvid eller orange



Trafik lys



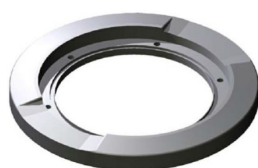
Follow-me (Gul blonk, rød fast lys)



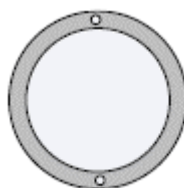
Aircraft Chocks



Sneplov ring



Spacer ring



Adapter ring med varme







Reperation af prismer og reflektor

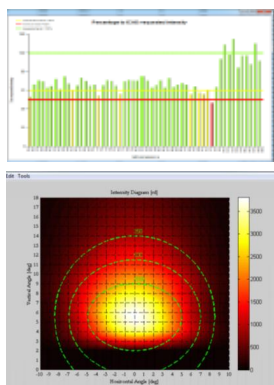


før - efter



før - efter

Fotometrisk måling af banelys og PAPI



Temperature-resistant Spira fleksibel warm air tube N (-55°C to +150°C)



Hybrid energi  
sol & vind





Stevenson screen



Signal lampe



PortabelTest udstyr



Converter 6,6A til 24 VDC



Smart Bolt: m10/30 - m16/30



4-6 mm<sup>2</sup> kabel Reperatrions kit

