

СКАЙДОМ.РФ





# CHANGING LOW-RISE RUSSIA

For several years we are working for giving people an opportunity to build amazing houses for themselves. Our employees were selected only according to the professionalism and frenzy for the product, while people, choosing Skydome, are always different from total mass by their individuality. Sky, first of all, is the choice of the person, being free from stereotypes. Exactly for such people this brochure is dedicated.



## SPHERE IS THE MOST STRONG FORM FROM EVER EXISTING

The house is so strong and safe as has never been before. Skydom is the single integral design thanks to which the external load is distributed evenly. The experience of our engineers in aerospace field has allowed us to integrate absolutely new production processes, as the result Sky has the strongest constructional connections.



2	700	7
times stronger than the standard house	resists till seven hundred kg of wind load per m <sup>2</sup>	high seismic resistant - 7 points by Richter scale

## NON-NEGOTIABLE COMFORT LEVEL YOUR QUESTS WILL WANT TO STAY LIVING WITH YOU

Skydome is the unique construction, where is no internal structural walls, so it allows to create absolutely individual plan, considering all your wishes. Eco materials and natural air circulation create special health microclimate, positively influencing on the health and emotional state. You reduce the costs for heating in half, due to the dome shape and low heat losses.



2	95	2
times more energy saving by the heat losses values	% of the materials of natural occurring	twice lighter than the standard house





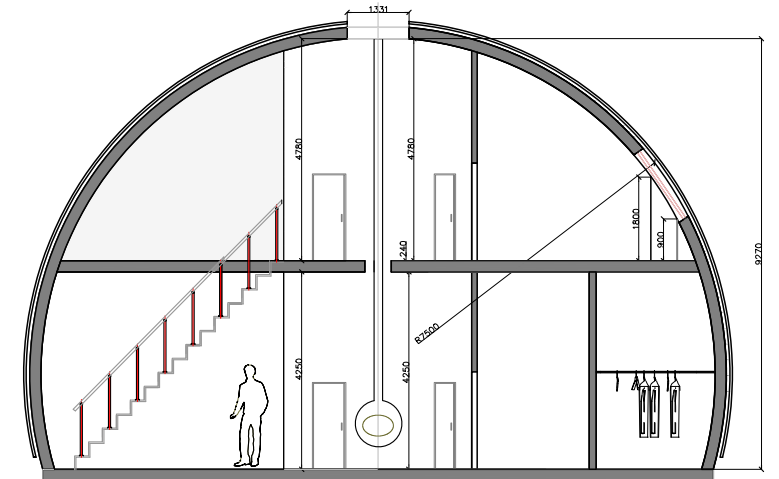






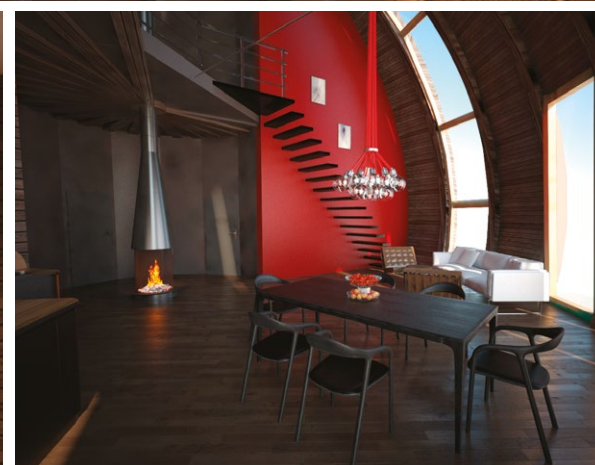
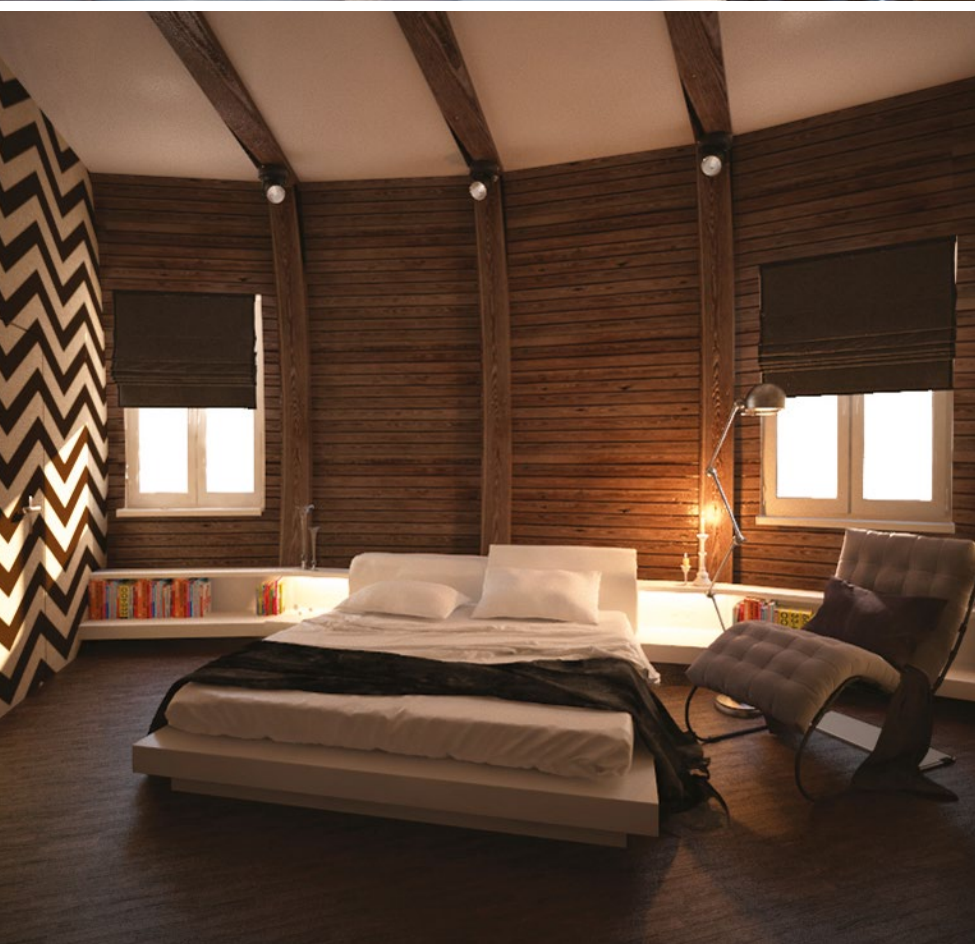
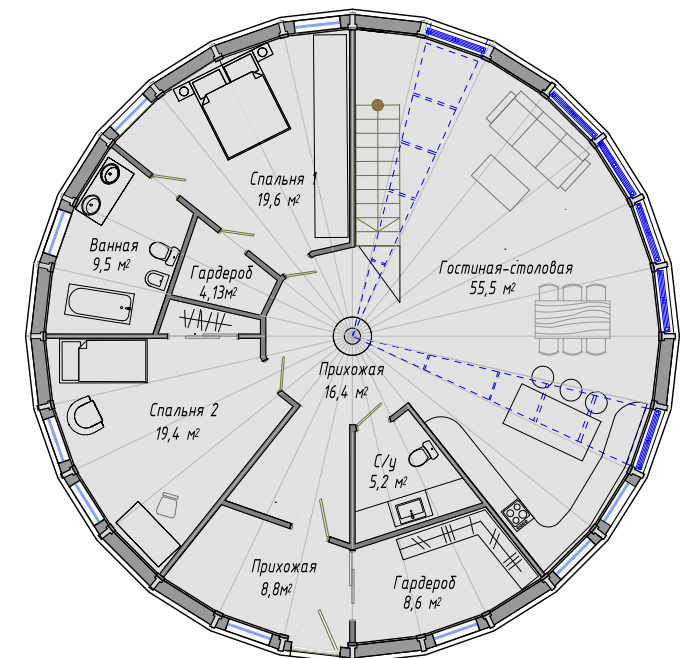
TOTAL AREA 260 M<sup>2</sup>

Living space 232 M<sup>2</sup>  
Height from floor 9,27 m



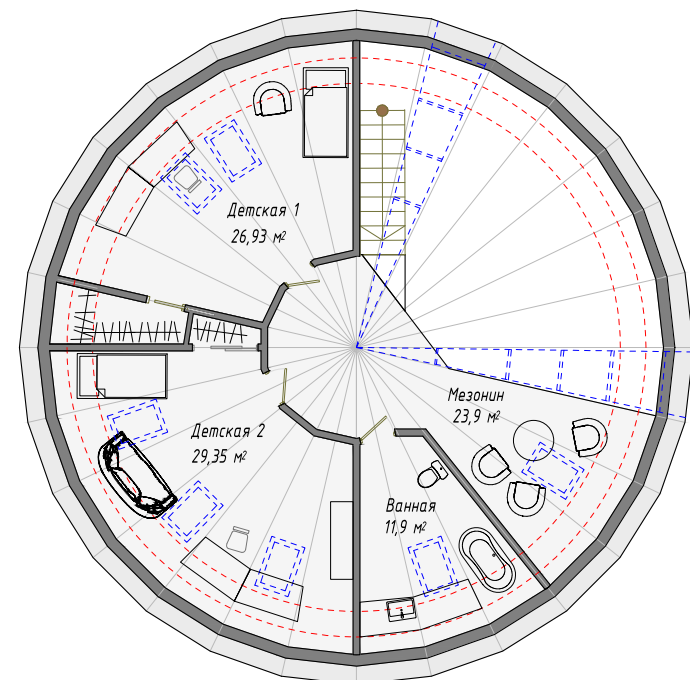
## PLAN OF THE 1<sup>ST</sup> FLOOR

Total area	152,5 M <sup>2</sup>
Living room	55,5 M <sup>2</sup>
Entrance hall 1	16,4 M <sup>2</sup>
Entrance hall 2	8,8 M <sup>2</sup>
Cloak room 1	4,13 M <sup>2</sup>
Cloak room 2	8,6 M <sup>2</sup>
Bath room	9,5 M <sup>2</sup>
WC	5,2 M <sup>2</sup>
Bed room 1	19,6 M <sup>2</sup>
Bed room 2	19,4 M <sup>2</sup>



## PLAN OF THE 2<sup>ND</sup> FLOOR

Total area	106,5 M <sup>2</sup>
Mezznine	23,9 M <sup>2</sup>
Children's room 1	26,93 M <sup>2</sup>
Children's room 2	29,35 M <sup>2</sup>
Bath room	11,9 M <sup>2</sup>







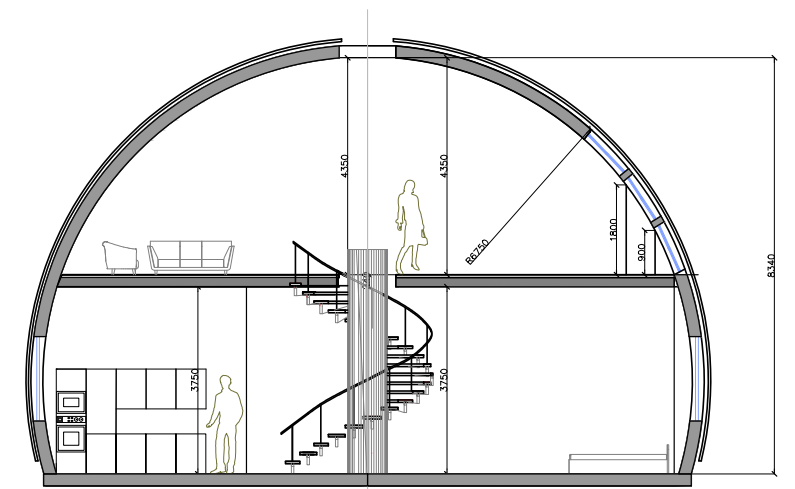
СКАЙ 13.5





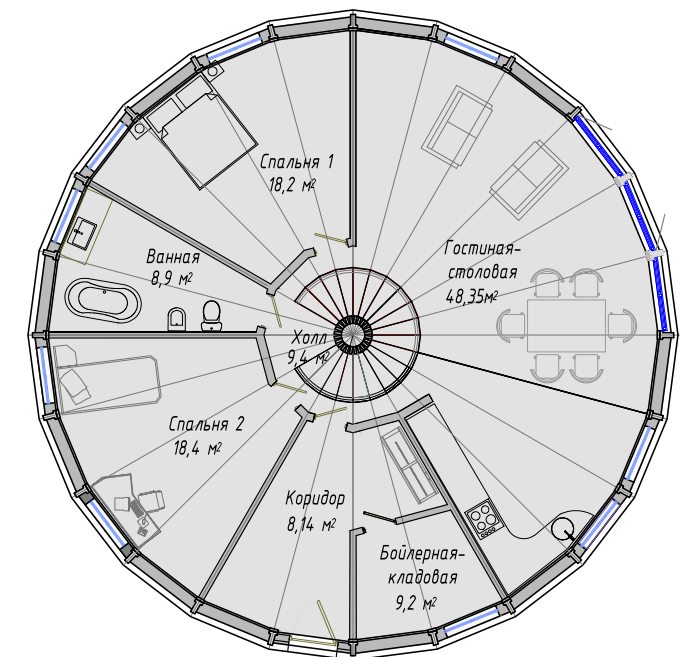
TOTAL AREA 207 M<sup>2</sup>

Living space 183 м<sup>2</sup>  
Height from floor 8.34 м



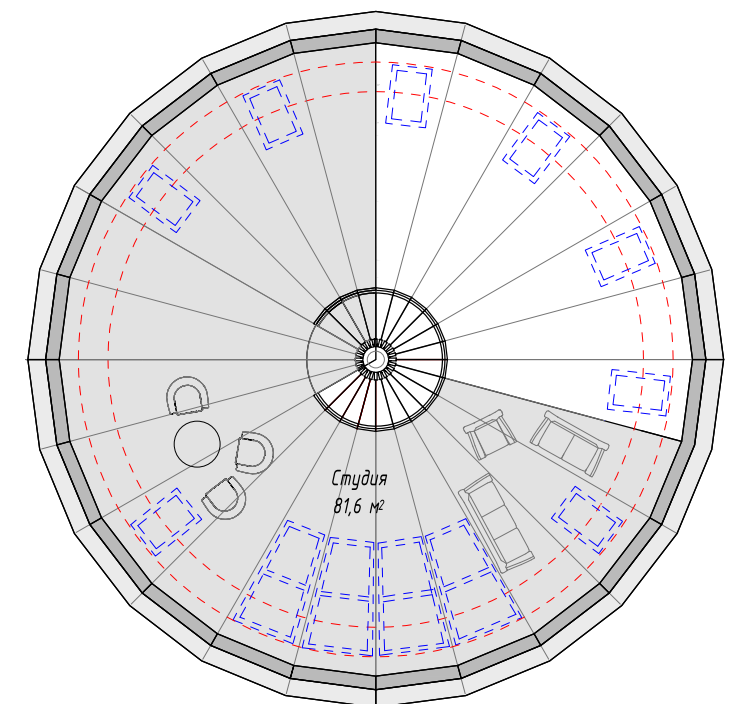
## PLAN OF THE 1<sup>ST</sup> FLOOR

Total area	124,7 м <sup>2</sup>
Living room	48,35 м <sup>2</sup>
Entrance hall 1	9,4 м <sup>2</sup>
Hall	8,14 м <sup>2</sup>
Bath room	8,9 м <sup>2</sup>
Bed room 1	18,2 м <sup>2</sup>
Bed room 2	18,4 м <sup>2</sup>



## PLAN OF THE 2<sup>ND</sup> FLOOR

Total area	106,5 м <sup>2</sup>
------------	----------------------





СКАЙ 12

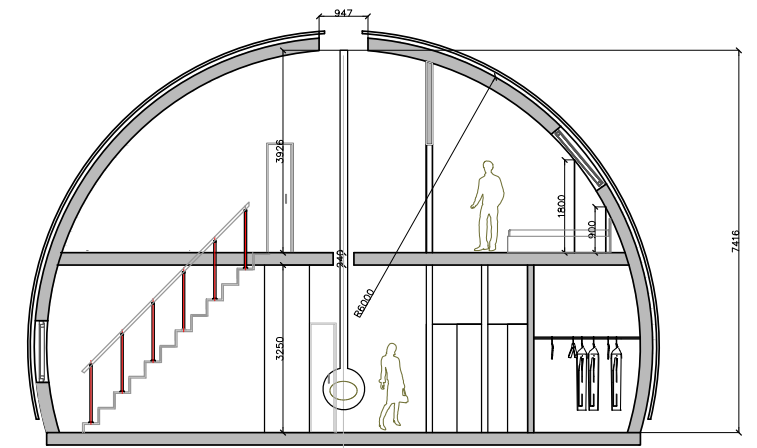






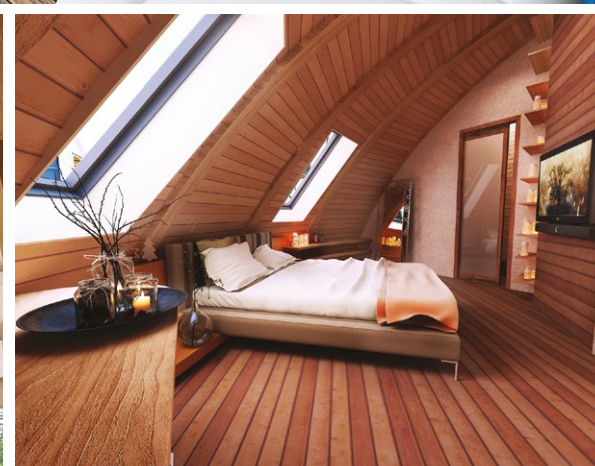
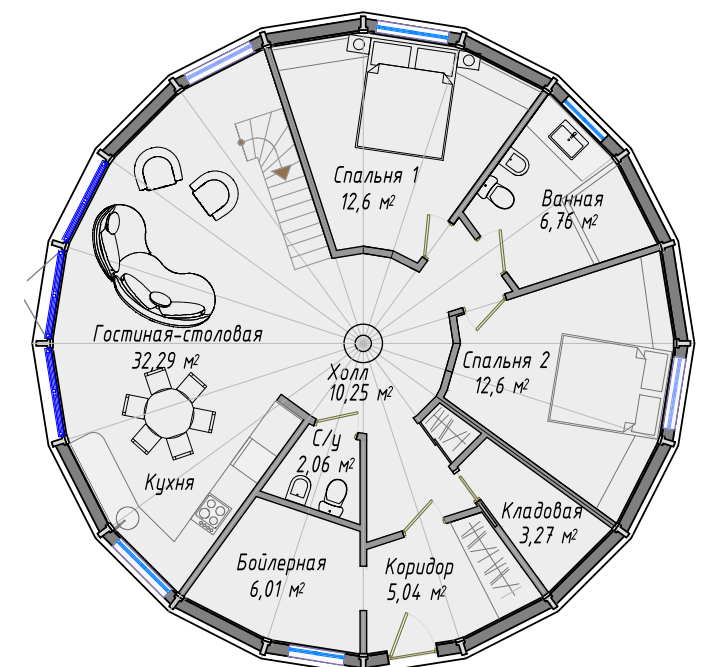
TOTAL AREA 169 M<sup>2</sup>

Living space 147 m<sup>2</sup>  
Height from floor 7.42 m



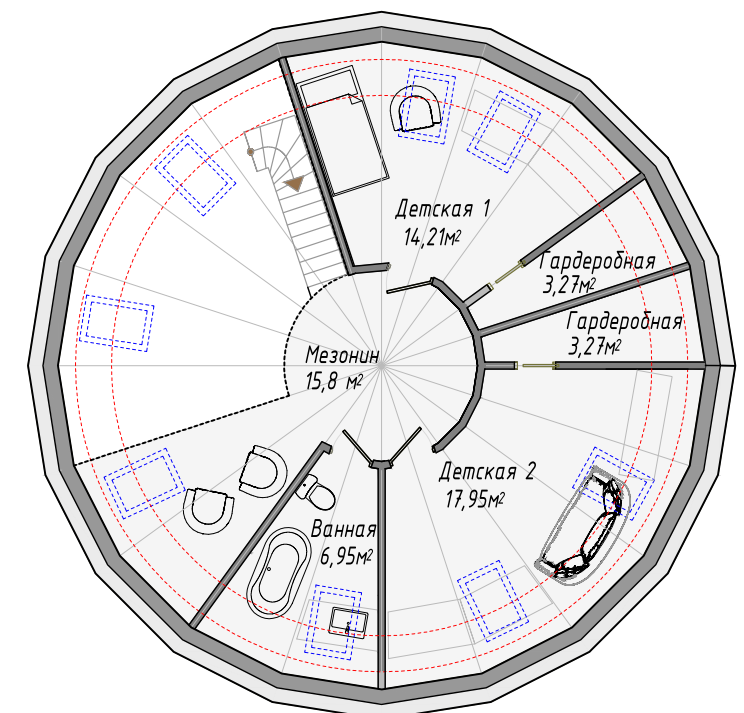
## PLAN OF THE 1<sup>ST</sup> FLOOR

Total area	96,7 m <sup>2</sup>
Living room	32,29 m <sup>2</sup>
Entrance hall	10,25 m <sup>2</sup>
Hall	5,04 m <sup>2</sup>
Boiler	6,01 m <sup>2</sup>
Storage room	3,27 m <sup>2</sup>
Bath room	6,76 m <sup>2</sup>
WC	2,06 m <sup>2</sup>
Bed room 1	12,6 m <sup>2</sup>
Bed room 2	12,6 m <sup>2</sup>



## PLAN OF THE 2<sup>ND</sup> FLOOR

Total area	71,5 m <sup>2</sup>
Mezznine	15,8 m <sup>2</sup>
Children's room 1	14,21 m <sup>2</sup>
Children's room 2	17,95 m <sup>2</sup>
Bath room	6,95 m <sup>2</sup>
Cloak room 1	3,27 m <sup>2</sup>
Cloak room 2	3,27 m <sup>2</sup>





# СКАЙ 10.5

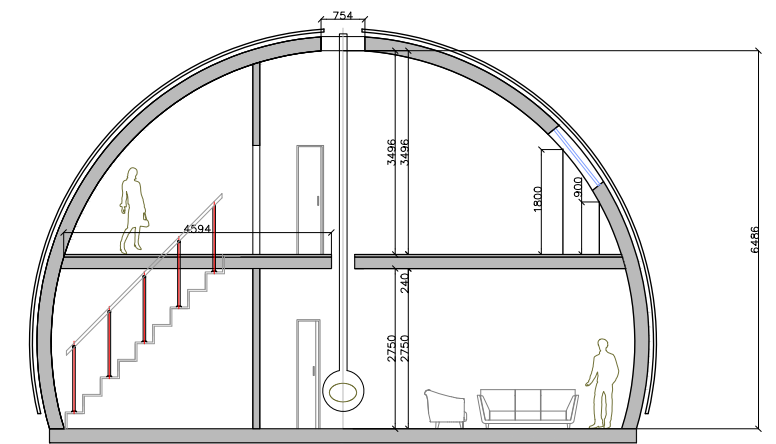






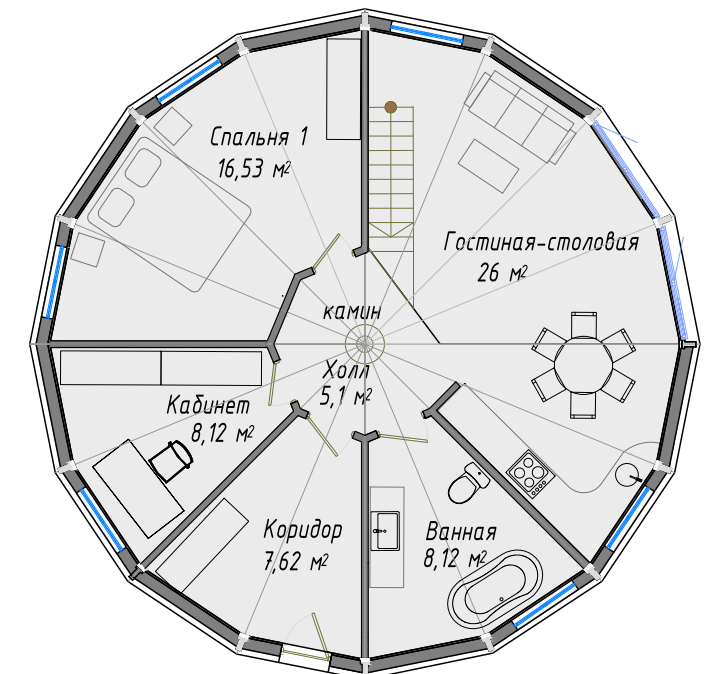
TOTAL AREA 123 M<sup>2</sup>

Living space 107 м<sup>2</sup>  
Height from floor 6.48 м



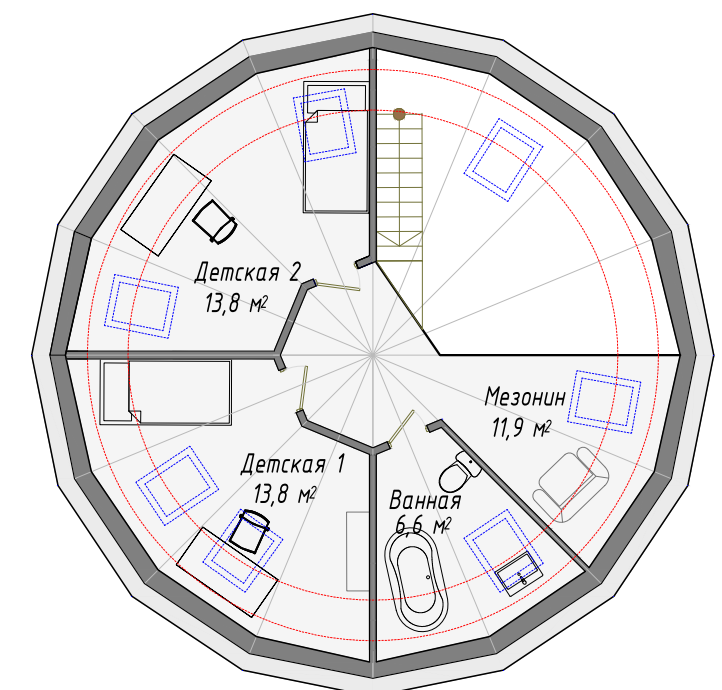
## PLAN OF THE 1<sup>ST</sup> FLOOR

Total area	74,25 м <sup>2</sup>
Living room	26 м <sup>2</sup>
Entrance hall	5,1 м <sup>2</sup>
Cabinet	8,12 м <sup>2</sup>
Hall	7,62 м <sup>2</sup>
Bath room	8,12 м <sup>2</sup>
Bed room 1	16,53 м <sup>2</sup>



## PLAN OF THE 2<sup>ND</sup> FLOOR

Total area	32,5 м <sup>2</sup>
Mezznine	11,9 м <sup>2</sup>
Children's room 1	13,8 м <sup>2</sup>
Children's room 2	13,8 м <sup>2</sup>
Bath room	6,6 м <sup>2</sup>





# СКАЙ 9

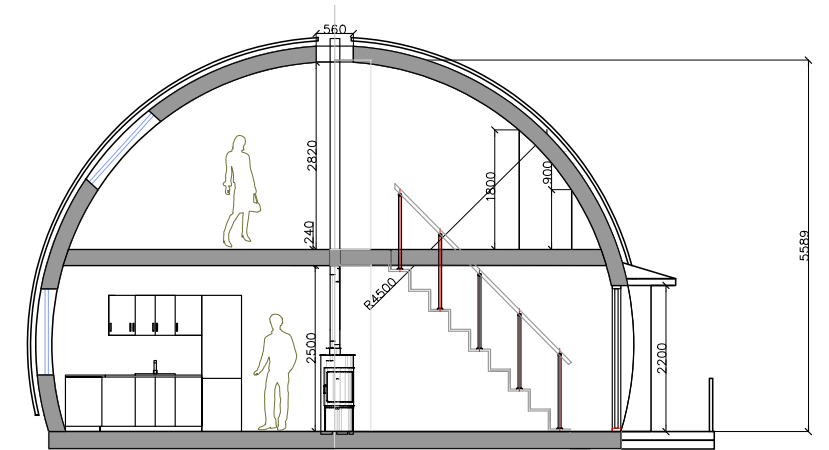






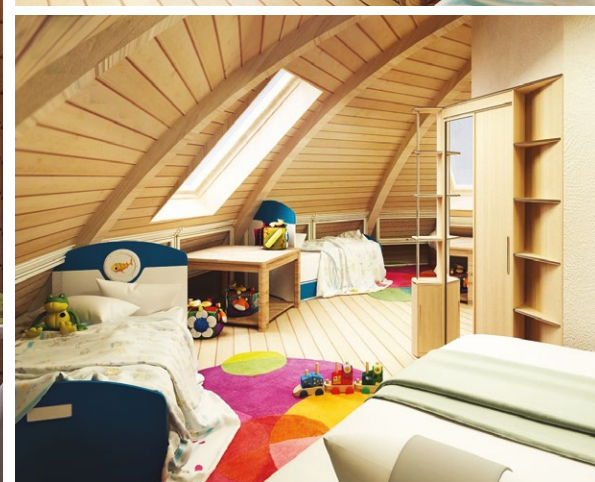
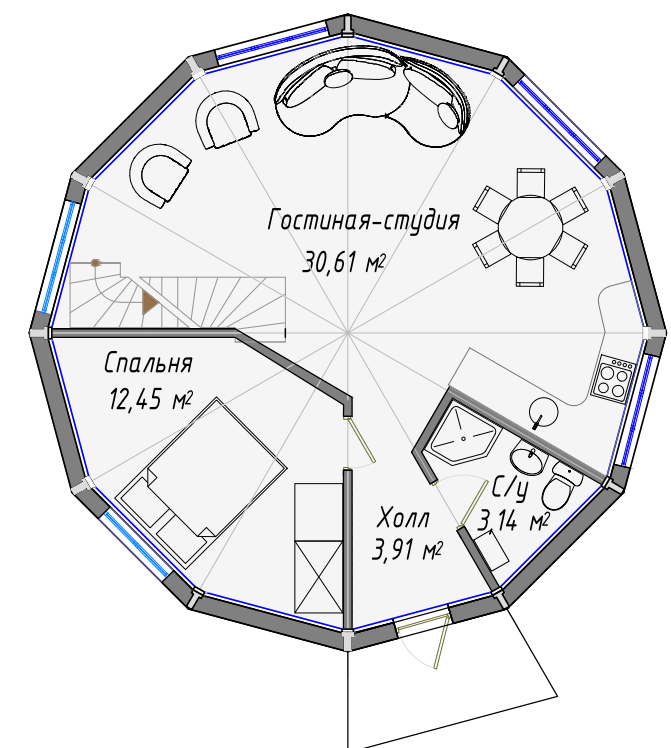
TOTAL AREA 80 M<sup>2</sup>

Living space 66 м<sup>2</sup>  
Height from floor 5.58 м



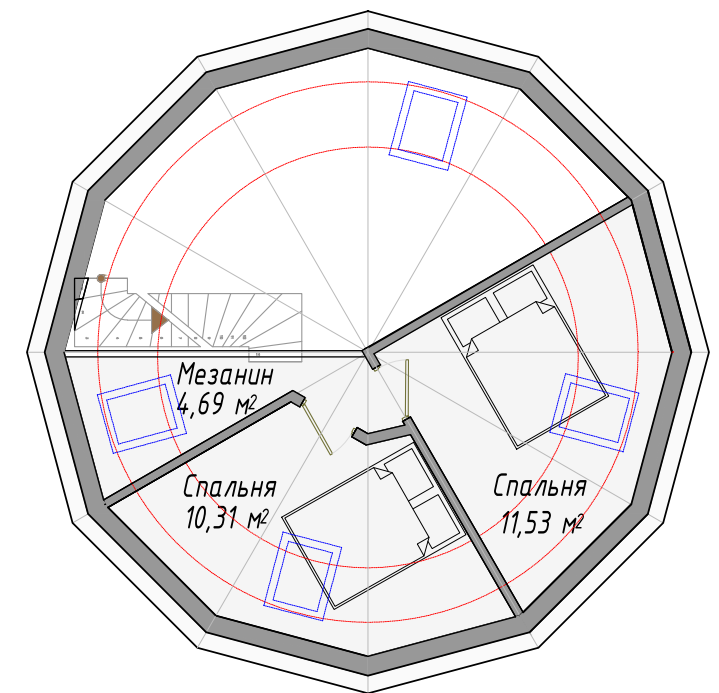
PLAN OF THE 1<sup>ST</sup> FLOOR

Total area	51,5 м <sup>2</sup>
Living room-studio	30,61 м <sup>2</sup>
WC	3,14 м <sup>2</sup>
Bed room	12,45 м <sup>2</sup>
Hall	3,91 м <sup>2</sup>



PLAN OF THE 2<sup>ND</sup> FLOOR

Total area	27,5 м <sup>2</sup>
Mezzanine	4,69 м <sup>2</sup>
Bedroom 1	10,31 м <sup>2</sup>
Bedroom 2	11,53 м <sup>2</sup>







OKAIZ 6

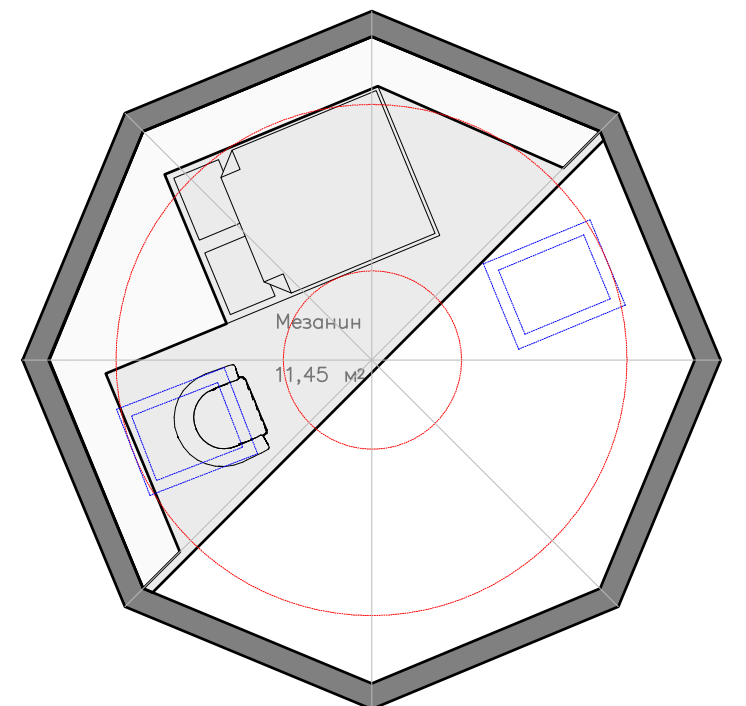
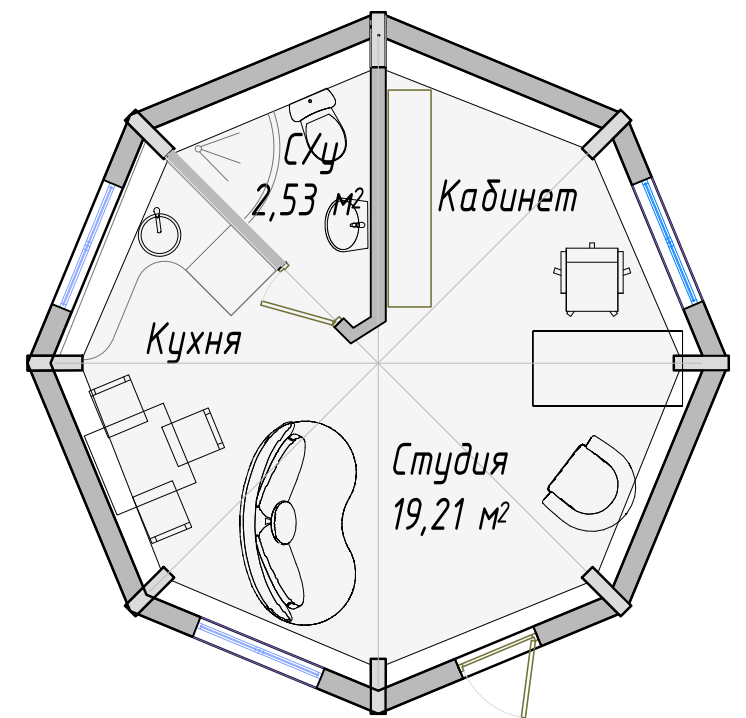
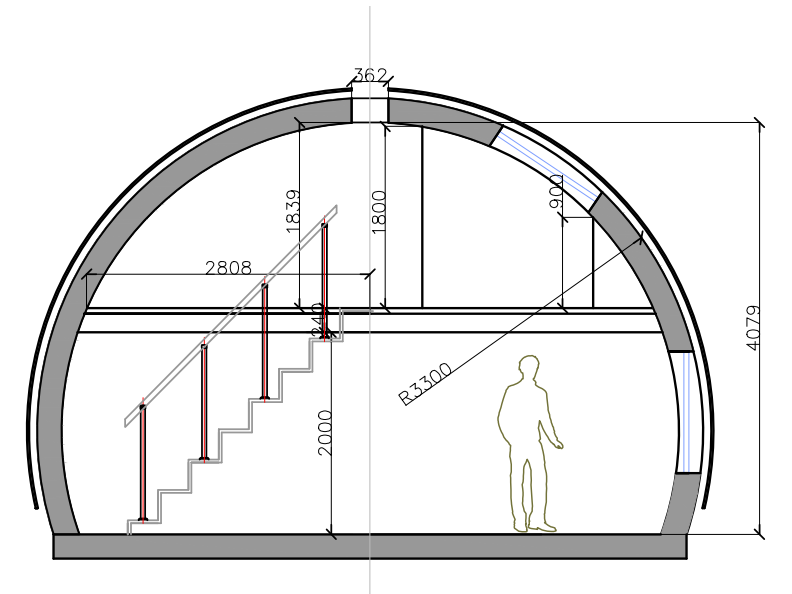




СКАЙ 6 - STUDIO

TOTAL AREA 34 M<sup>2</sup>

Living space 23 M<sup>2</sup>  
Height from the floor 4.07 M





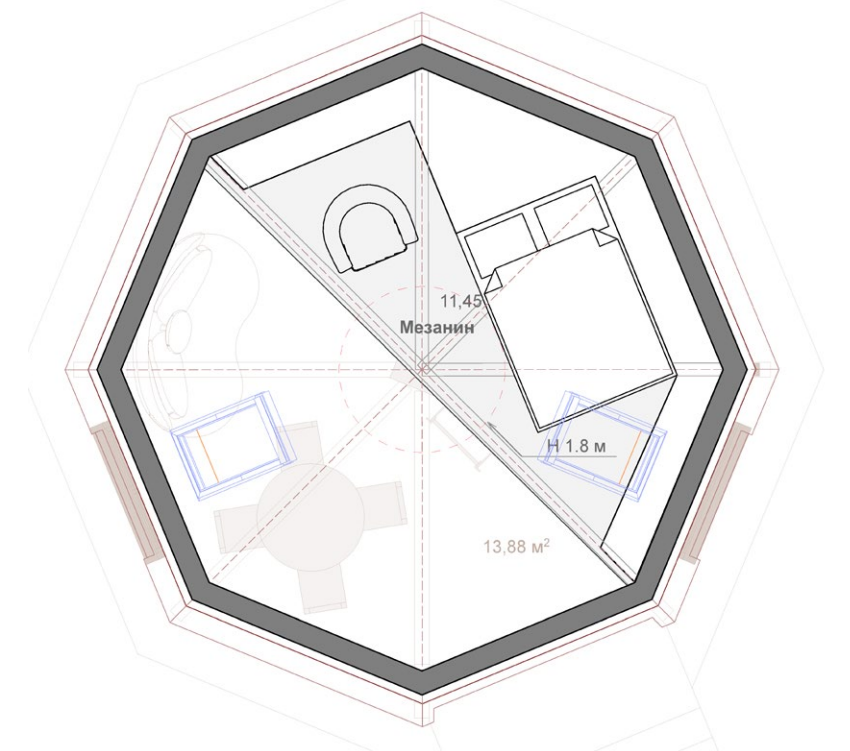
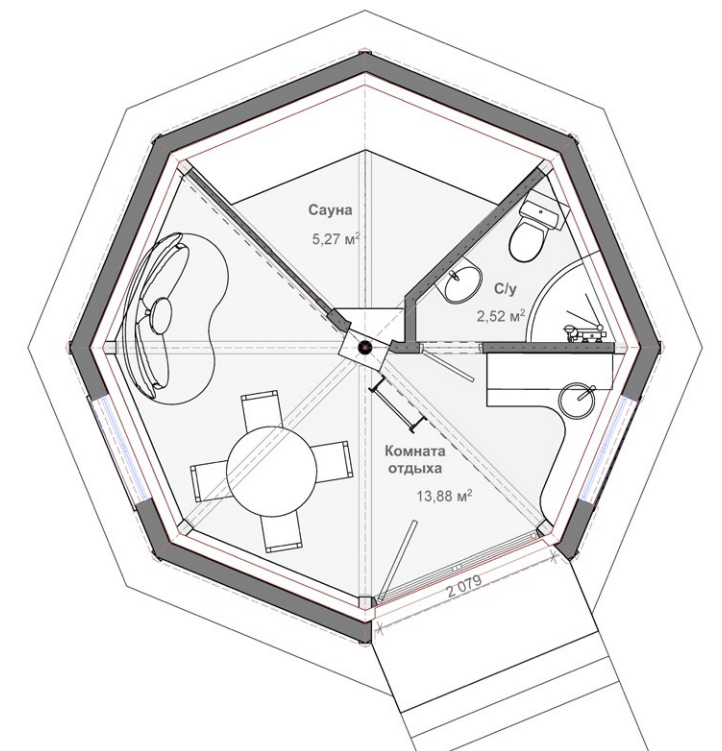
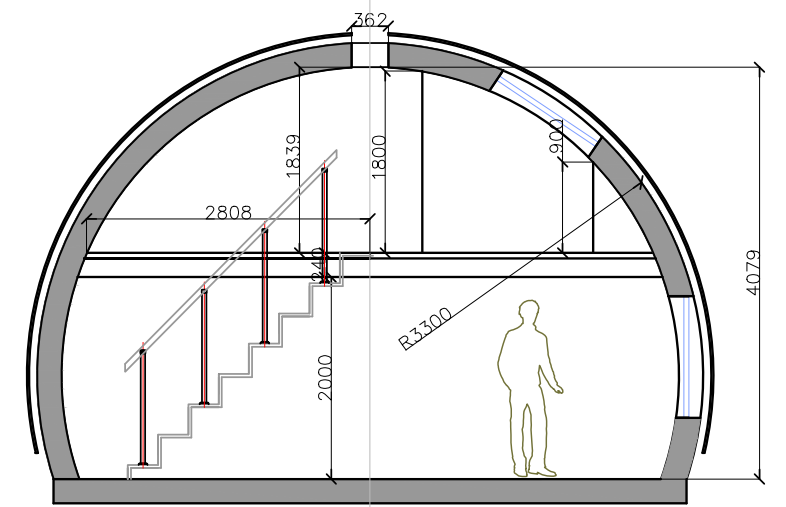


СКАЙ 6 - БАНЯ



TOTAL AREA 34 M<sup>2</sup>

Living space 23 M<sup>2</sup>  
Height from the floor 4.07 м





# STANDARD SET

## EXTERIOR

**Roof**  
Split shingle from larch, 3 layer tiles with 400 mm length, metal from galvanized sheet, a cap at the top of the dome

**Windows of the 1<sup>st</sup> floor**  
Energy-saving wooden insulated glass units with 2-chamber sealed double glass units

**Windows of the 2<sup>nd</sup> floor**  
Dormer wooden windows of Vellux production. Drips, jamb, sill are included in the set

**Dormer windows in the living room**  
Energy-saving wooden insulated glass units with 2-chamber sealed double glass units; wide opening central segment

## INTERIOR

**Doors**  
Interior doors from solid wood with all the necessary elements (handles, trims, hinges ); entrance room is made from the solid wood or metal

**Finish work of the dome**  
Finish work is made from conifer solid profiled panel. Wall framing is made from dry planed timber, assembled on the base of soundproof technology

**Insulation/soundproof**  
Realized on the base of intermediate floors and interior walls-100 mm of Eco thermal insulation (45% flax, 45% weed, 10% lavsan)

**Floor construction**  
Subfloor is made from water-resistant plywood; vibration absorbed base from foamed polyethylene; finishing coat is parquet board from larch, PVC floor borders , woodgrain

**Stair**  
Straight, single- span stair from solid wood

## CLIMATE

**Insulation**  
The insulation of the external dome outline is 200mm, ECO type insulation (45% flax, 45% weed, 10% lavsan)

**Steam insulation**  
Membrane type steam insulation for avoiding of condensate entering into the insulation (put in the dome, interior walls and floors)

**Hydro insulation**  
Membrane type hydro- and wind protection for avoiding of atmospheric precipitations entering into the insulation (put by the external outline)

## STRUCTURE

**Foundation**  
The set of piling fields on the steel boring piles. The penetration depth is according to the geological conditions, lower than frost depth. Concreting, reinforcing and binding are made by the profile.

**Supporting structure**  
The external structure is made from bent constructive timber of special T type cross section; floors' frame of the 1<sup>st</sup> and the 2<sup>nd</sup> levels is made from straight constructive timber of special made 2F type cross section

**Frame connections**  
Steel central frame connections; 3 spatial crowns, connection floor plates, external frame connections by the outline (steel 6mm, powder coating).

**External frame covering**  
Covering elements of the external outline is made from dry plane beams for the external dome and floors of the 1<sup>st</sup> and the 2<sup>nd</sup> levels.

## UTILITIES

**Electricity**  
Distribution through the house is made according to the typical building layout (to the receptacles by the 3core 2.5 NYM grey corrugated pipe, to the lightning by 3 core 1.5 NYM cable), receptacles and switchers (Legrand Etika-frames and elements on the clamps); automatic is Legrand

**Water supply**  
Distribution through the house from the entering point according to the typical building layout (PEX polymer tube for water supply, necessary connection elements), distribution header

**Heating**  
Distribution through the house from the distribution header to the heaters according to the typical building layout (PEX polymer tube for water supply, necessary connection elements), distribution header

**Canalization**  
Distribution to the consumers from input to the house according to the typical building layout ( drain pipe, internal PVC 110, drain pipe, internal PVC 50, necessary connection elements, fittings)

**Ventilation**  
Exhaust ventilation from WC, kitchen and kitchen equipment

## WORKS AND ETC.

**Fixing system**  
All the necessary fasteners and consumables for full house construction cycle

**Works**  
Works organization and set assembly of the house with finish works (professional installation personnel + supervisor of Skydom)

**Delivery**  
By 40inch containers within Central Federal District; the delivery both in and outside Russia is possible



# OPTIONS

## EXTERIOR

- Roofs variants: aluminum tile, ceramic tile, cedar shingle
- Dormer vertical windows
- Window-balcony
- Terrace around the perimeter of the house
- Landscape design
- Small architectural forms (garden-houses, parking, sauna/bath house)

## INTERIOR

- Design project
- Wall finishing materials (black alder, lime tree, sheet materials for further painting)
- Floor material (solid oak, birch, tile flooring)
- Figured made segmented flooring
- Wood craft (wood binding and painting)
- Spiral stair
- Fire place

## COMFORT

- Alternative Eco-insulation (cork)
- Louvres
- High sound proof
- Air Quality control system (filtration, treatment, humidification)
- Air conditioning

## STRUCTURE

- Insulated monolithic slabs
- Frame adaptation for the operation in the extreme weather conditions

## UTILITIES

- Complete solution by the external utilities
- Smart house (control and remote control)
- Heating boiler (Eco-boiler, pellet boiler)
- Heating elements (headers, heat-insulated floor)
- Alternate energy sources (solar batteries block, wind-powered turbines)
- Water preparation (well arrangement, filtration and treatment systems)
- Digestion tanks and waste water treatment systems

## WORKS AND ETC.

- The delivery both in and outside Russia
- Constructions in severe weather conditions (winter, extreme temperatures, high-mountain)
- Site improvement





# ADVANTAGES



## RUSSIAN INNOVATIONS



## HEALTHFUL MIND

All our employees go in for sports and have proactive attitude.



## FROM A TO Z

We do not sell the projects separately or the house frames only. We built it completely by ourselves and bear the full responsibility for what we do



## SHORTEST CONSTRUCTION TERMS

Are achieved by us due to the full set of house preparation on the production



## 24/7

We leave the object only when it is fully ready. Our employees are always online and ready to answer on any question



## IN THE SPIRIT OF THE GREATEST

Golden section rule is in the base of the construction



## COMPLETE CONTROL

From the first day of the construction we install video camera on site and you can control the process in anywhere in the world



## 10/25

Guarantee for works/guarantee for materials



## THROUGHOUT THE COUNTRY

The set of our house is placed in 40 inch container and ready for construction anywhere in the world



## PROFESSIONALITY

We use only the best materials and work especially with the qualitative professional tools



8 800 100 72 93  
+7 495 726 37 55



8 800 100 72 93  
+7 495 726 37 55  
mail@skydome.pro  
скайдом.рф