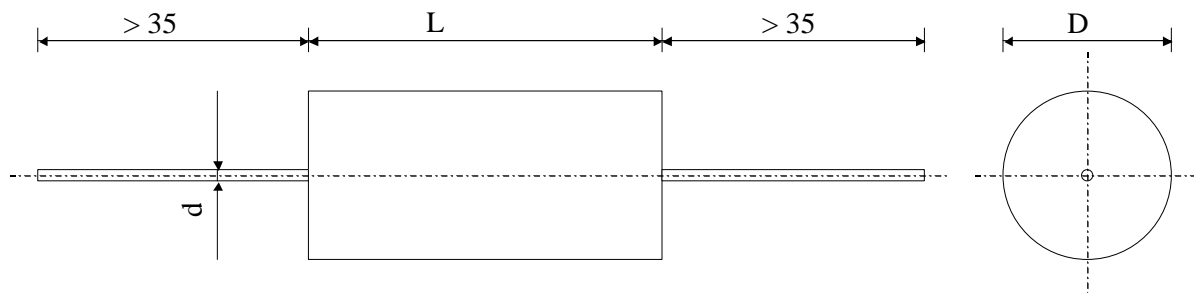


#6010

METALLIZED POLYPROPYLENE CAPACITORS

PPM 220-168 d K



Dielectric of metallized polypropylene

Polyester wrapped

Epoxy resin sealing

Parameter	Symbol	Value	Unit	Condition
Capacitance	C	0.068	μF	1 V / 1 kHz
Tolerance		± 10	%	
Rated voltage	Un DC	2200	VDC	
Rated voltage	Un AC	450	Veff	50 to 100 Hz
slope of voltage vari:	du/dt max.	800	V/ μsec	max. repetitive
Repetitive surge current	I cr. max	55	A	
RMS Current	Ieff max	1.2	Aeff	10 kHz
Tangent delta	tg δ	8	10^{-4}	1 V / 1 kHz
Stray inductance	ESL	≤ 40	nH	
Insulation resistance between terminals	Ri	> 100'000	M Ω	500 VDC - 1 min
Test voltage between terminals	U T1	4000	VDC	10 s
Operating temp.		- 40 / + 85 °C		
Estimated operational life (-5%)		> 200'000	h	Un DC / 70°C
Dimension	Symbol	Value	Unit	Conditions
Diameter	D max	14	mm	
Lenght	L max	38	mm	
Terminals				
Axial tinned wire	d	$\varnothing 1.0 \times 35$	mm	
	M1			
	M0			
	Modification	Date	Visa émetteur	

Condensateurs CH 1400 Yverdon, Switzerland
 Kondensatoren Tel.: ++41 24 445 66 88
 Capacitors Fax: ++41 24 445 66 89

Lecclanché
Capacitors
A FISCHER & TULSCHE COMPANY

HJJ

www.Lcap.ch
 18.03.2011

capinfo@Lcap.ch
 faisab6010.XLS