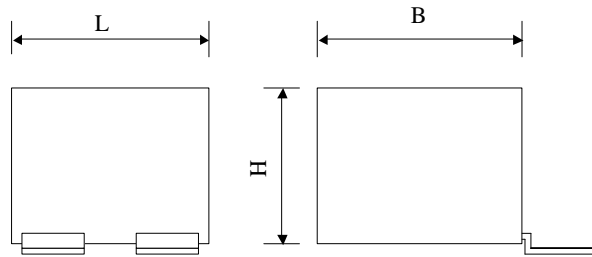


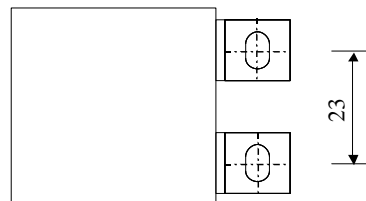
#5553

METALLIZED POLYPROPYLENE CAPACITORS

PPM 80-3.0 cs2 K



Préliminary



Dielectric of metallized polypropylene

Self-extinguishing plastic housing / Epoxy resin sealing

Parameter	Symbol		Value	Unit	Condition
Capacitance	C		3	$\mu\text{F}$	1 V / 1 kHz
Tolerance			$\pm 10$	%	
Rated voltage	Un DC		800	VDC	
Rated voltage	Un AC			VAC	50 Hz
slope of voltage variation	du/dt max.		200	V/ $\mu\text{sec}$	max. repetitive
Repetitive surge current	I cr. max		600	A	
Tangente delta	tg $\delta$		4	$10^{-4}$	1 V / 1 kHz
Stray inductance	ESL		$\leq 30$	nH	
Insulation resistance	Ri		$> 6600$	M $\Omega$	100 VDC - 1 min
Test voltage between terminals	U T1		1280	VDC	10 s
Climatic category			40/85/56		
Estimated operational life (-3%)				h	
Dimension	Symbol			Unit	Conditions
Width	B		45.5	mm	
Height	H		35.5	mm	
Length	L		47.5	mm	
Terminals					
Tinned copper					
	RM		23	mm	
	M1				
	M0				
	Modification	Date	Visa émetteur		

Condensateurs CH 1401 Yverdon-les-Bains  
 Kondensatoren Tel.: ++41 24 445 66 88  
 Capacitors Fax: ++41 24 445 66 89

**Le lanché**  
**Capacitors**  
A FISCHER & TADICHE COMPANY

HJJ

05.04.2006

faisab5553.XLS