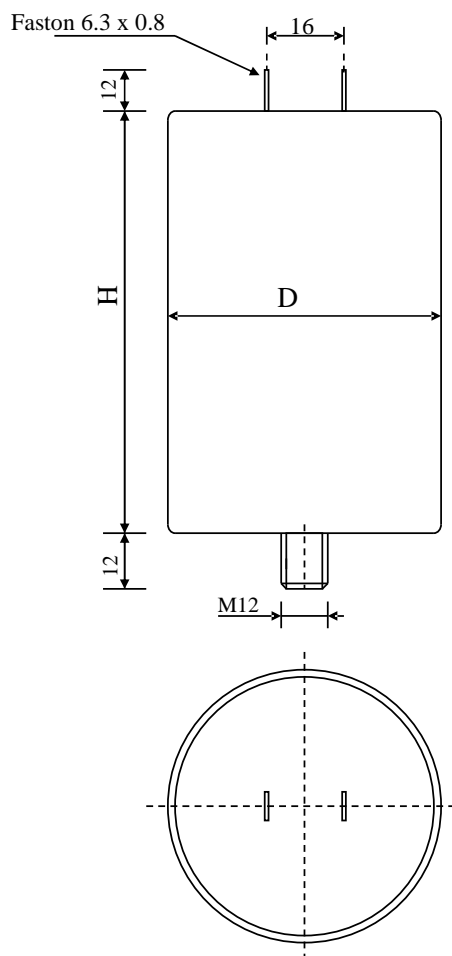


#6304

METALLIZED POLYPROPYLENE CAPACITORS

PAM 200-2.5 cv2 K



Dielectric of metallized polypropylene

FAST-ON 6.3 x 0.8 mm

Epoxy resin end sealing

Aluminium case

Parameter	Symbol	Value	Unit	Condition
Capacitance	C	2.5	$\mu\text{F}$	1 V / 1 kHz
Tolerance		$\pm 10$	%	
Rated voltage	Un AC	2000	VAC	50 Hz to 200 Hz
slope of voltage variation	du/dt max.	400	V/ $\mu\text{sec}$	max. repetitive
Repetitive surge current	I cr. max	1000	A	
RMS Current	I <sub>eff</sub> max	15	A <sub>eff</sub>	10 kHz
Tangent delta	tg $\delta$	$\leq 5$	$10^{-4}$	1 V / 1 kHz
Equivalent serie resistance	ESR	10	m $\Omega$	1 V / 10 kHz
Stray inductance	ESL	$\leq 120$	nH	
Test voltage between terminals	U T1	4500	VDC	1 min
Test voltage terminals to case	U T2	3000	VAC	50 Hz / 1 min
Operating Temperature		-25 to + 70	$^{\circ}\text{C}$	

Dimension	Symbol	Value	Unit	Conditions
Diameter	D	65	mm	
Height	H	125	mm	
Terminals				
fast-on		6.3 x 0.	mm	
fixing stud		M12 x 12	mm	

	M1			
	M0			
	Modification	Date	Visa émetteur	

Condensateurs CH 1400 Yverdon, Switzerland  
 Kondensatoren Tel.: ++41 24 445 66 88  
 Capacitors Fax: ++41 24 445 66 89

**Lecan**  
**Capacitors**  
A FISCHER & TASSOCHI COMPANY

HJJ

www.Lcap.ch  
 05.06.2014

capinfo@Lcap.ch  
 faisab6304.XLS