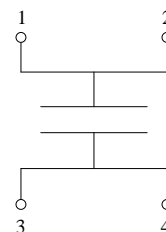
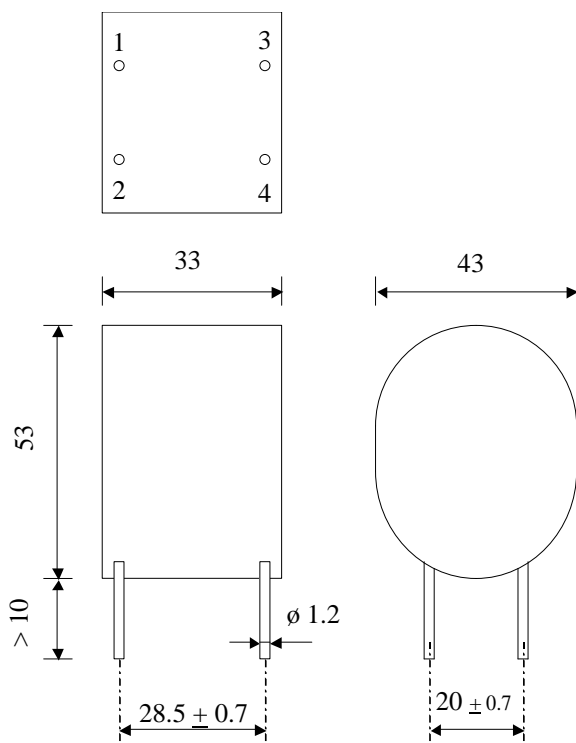


5690

FILM-FOIL CAPACITORS

TYPE
KP-4 200-145 a J

Dielectric : polypropylene

Polyester wrapped

Epoxy resin sealing

| Paramètre | Symbol | Value | Unit | Condition |
|--------------------------------|-----------------------|-----------|------------------|--|
| Capacitance | C | 45 | nF | 20°C, 1 kHz |
| Tolérance | | 5 | % | |
| Rated voltage | Un DC | 2'000 | VDC | |
| Rated voltage | Un AC | 500 | VAC | 50 Hz to 10 kHz |
| Repetitive surge current | I cr. Max | 300 | A | |
| RMS Current | I _{eff} max. | 24 | A _{eff} | f > 330 kHz |
| Tangente delta | tgδ | ≤ 2.3 E-4 | | 1 V / 100 kHz / 20 °C |
| Equivalent serie resistance | ESR | ≤ 3.0 | mΩ | 1 V / f > 330 kHz / 20 °C |
| Stray inductance | ESL | ≤ 50 | nH | |
| Insulation resistance | Ri | > 100'000 | MΩ | 100 VDC - 1 min |
| Test voltage between terminals | U T1 | 4'000 | VDC | 1 min |
| Climatic category | | 25/70/56 | | |
| Estimated operational life | | > 100'000 | H | 24 ARMS / 330 kHz Un DC / 40°C temp. Amb. |

| Dimension | Symbole | Value | Unité | Conditions |
|---|--------------|-------|---------------|------------|
| Width | B max | 43 | mm | |
| Height | H max | 53 | mm | |
| Length | L max | 33 | mm | |
| Terminals | | | | |
| Axial tinned wire 4 x | | ø 1.2 | mm | |
| Valeurs indicatives, sous réserve de modification | M2 | | | |
| | M1 | | | |
| | M0 | | | |
| | Modification | Date | Visa émetteur | |

Condensateurs CH 1400 Yverdon-les-Bains

Kondensatoren Tel.: ++41 24 445 66 88

Capacitors Fax: ++41 24 445 66 89

Le laniché
Capacitors
A FISCHER & PAUSCHKE COMPANY

HJJ

09.10.2007

faisab5690.XLS