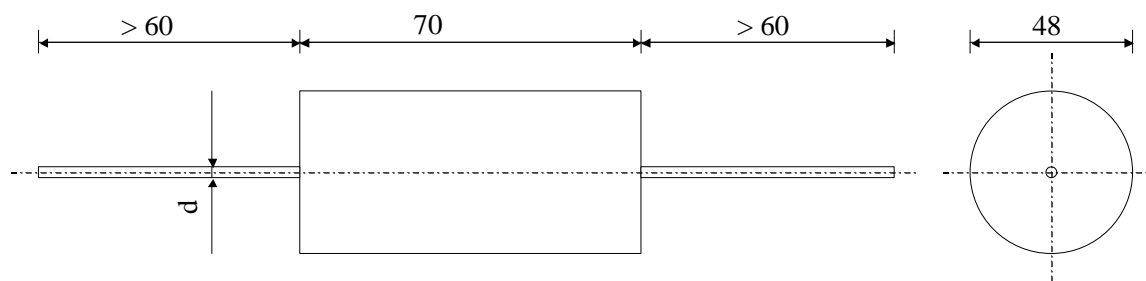


# 5572

## FILM-FOIL CAPACITORS

TYPE  
KP 350-047 d K

Dielectrique polypropylene

Plastic sleeve / Epoxy resin sealing

| Paramètre                      | Symbol                | Value     | Unit             | Condition            |
|--------------------------------|-----------------------|-----------|------------------|----------------------|
| Capacitance                    | C                     | 470       | nF               | 20°C, 1 kHz          |
| Tolérance                      |                       | 10        | %                |                      |
| Rated voltage                  | Un DC                 | 3'500     | VDC              |                      |
| Rated voltage                  | Un AC                 | 600       | VAC              | 50 Hz to 4 kHz       |
| Repetitive surge current       | I cr. Max             | 1500      | A                |                      |
| RMS Current                    | I <sub>eff</sub> max. | 13        | A <sub>eff</sub> | 10 kHz               |
| Tangente delta                 | tgδ                   | ≤ 4.0 E-4 |                  | 1 V / 10 kHz / 20 °C |
| Stray inductance               | ESL                   | ≤ 30      | nH               |                      |
| Insulation resistance          | Ri                    | > 100'000 | MΩ               | 100 VDC - 1 min      |
| Test voltage between terminals | U T1                  | 7'000     | VDC              | 1 min                |
| Climatic category              |                       | 25/70/56  |                  |                      |
|                                |                       |           |                  |                      |
|                                |                       |           |                  |                      |

| Dimension         | Symbole | Value      | Unité | Conditions |
|-------------------|---------|------------|-------|------------|
| Diameter          | ∅       | 48         | mm    |            |
| Heigth            | H       | 70         | mm    |            |
| Terminals         |         |            |       |            |
| Axial tinned wire | d       | ∅ 1.5 x 60 | mm    |            |
|                   |         |            |       |            |

|   |              |      |               |  |
|---|--------------|------|---------------|--|
| Valeurs indicatives, sous réserve de modification | M2           |      |               |  |
|   | M1           |      |               |  |
|   | M0           |      |               |  |
|   | Modification | Date | Visa émetteur |  |

Condensateurs CH 1401 Yverdon-les-Bains  
 Kondensatoren Tel.: ++41 24 445 66 88  
 Capacitors Fax: ++41 24 445 66 89

**Le lanché**  
**Capacitors**  
A FISCHER & TALSCHER COMPANY

HJJ

12.06.2006

faisab5572.XLS