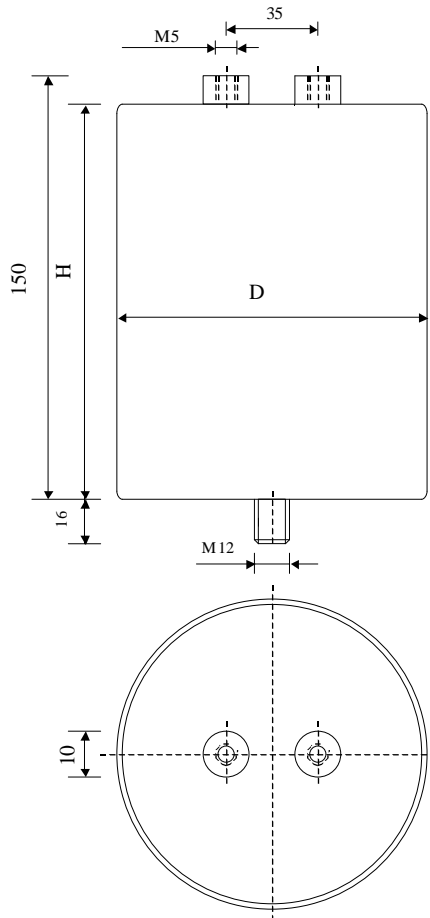


#6172

METALLIZED POLYPROPYLENE CAPACITORS

PPM 100-270.0 cv6 K



Dielectric of metallized polypropylene

Threaded outputs

Epoxy resin end sealing

Aluminium case

Parameter	Symbol	Value	Unit	Condition
Capacitance	C	270	$\mu\text{F}$	1 V / 1 kHz
Tolerance		$\pm 10$	%	
Rated voltage	Un DC	1000	VAC	
Surge voltage	Us	1100	V cr.	
RMS Current	I <sub>eff max.</sub>	40	A <sub>eff</sub>	10 kHz
Repetitive surge current	I <sub>cr. max</sub>	2000	A	
Tangent delta	tg $\delta$	$\leq 45$	$10^{-4}$	1 V / 1 kHz
Equivalent serie resistance	ESR	2.7	m $\Omega$	1 V / 10 kHz
Stray inductance	ESL	$\leq 90$	nH	
Insulation resistance	Ri x C	$\geq 30'000$	s	300 VDC - 1 min
Test voltage between terminals	U T1	1500	VDC	10 s
Test voltage terminals to case	U T2	2500	VAC	50 Hz / 1 min
Climatic category		27/70/56		
Estimated operational life (-5 %)		$> 100'000$	h	65 °C / 1000 VDC

Dimension	Symbol	Value	Unit	Conditions
Diameter	D	90	mm	
Height	H	145	mm	
Terminals				
Thread		M5 x 10	mm	
Thread spacing	e	35	mm	
Fixing stud		M12 x 16	mm	

	M1			
	M0			
	Modification	Date	Visa émetteur	

Condensateurs CH 1400 Yverdon-les-Bains  
 Kondensatoren Tel.: ++41 24 447 22 82  
 Capacitors Fax: ++41 24 447 22 85

**Lecranché**  
**Capacitors**  
A FISCHER & TAUSSCHÉ COMPANY

HJJ

02.04.2013

faisab6172.XLS