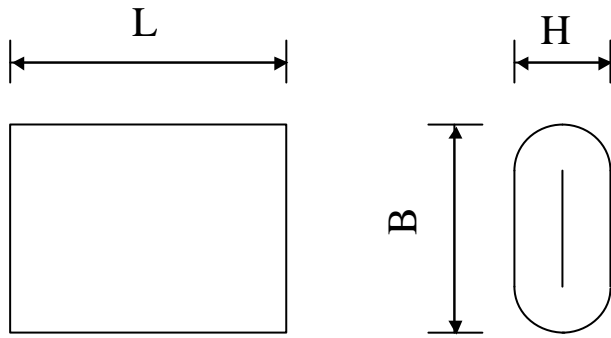


# 6179	Tuning Capacitors	TYPE KPSA 50-0209 bobf K
--------	-------------------	-----------------------------

Preliminary
Datasheet



Metal end faces
Zinc + Tin alloy

Dielectric: Polypropylene metallized + film + aluminium foil

Paramètre	Symbol	Value	Unit	Condition
Capacitance	C	209	nF	20°C, 1 kHz
Tolérance		± 10	%	
Rated voltage	Un AC	500	VRMS	70 °C
Slope of voltage variation	du/dt max.	1'23	V/µs	max. repetitive
Repetitive surge current	I cr. max	258	A	max. repetitive
Tangent delta diele	tgδo	2 E-4		
Serial resistance	Rs	2.0	mΩ	
Insulation resistance	Ri	> 50'000	MΩ	500 VDC - 1 min
Test voltage between terminals	UT	600	VAC	50 Hz / 10 s.
Estimated operational life (-3 %)		100'000	h	Un AC / 70°C hot spot

Dimension	Symbole	Value	Unité	Conditions
Width	B max	30	mm	
Height	H max	14	mm	
Length	L max	27	mm	

	M2			
	M1			
	M0			
	Modification	Date	Visa émetteur	