

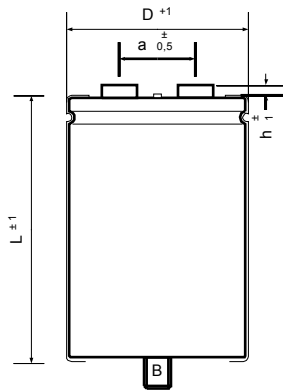
Leclanché Capacitors  
48, av. de Grandson  
1400 Yverdon, Switzerland



Tel. +41 24 445 66 88  
Fax +41 24 445 66 89  
[capinfo@Lcap.ch](mailto:capinfo@Lcap.ch)  
[www.Lcap.ch](http://www.Lcap.ch)

Drawing No. :100011015  
created from : hm 15/03/2013 11:42:00

**Part Number : GMB56231575145**



Ø D : 75 mm  
L : 145 mm  
a : 31,7 mm  
h : 5 mm  
B : M 12 x 16  
Terminals : M 5

**Electrical Parameter**

Rated Capacitance ( $C_R$ ) @ 100 Hz / 20 °C	<b>5600</b> $\mu$ F	
Tolerance	<b>±20</b> %	
Rated Voltage ( $U_R$ )	<b>315</b> V	
Surge Voltage ( $U_S$ ) max. 5 x 1 min / h	<b>362</b> V	
Reverse Voltage ( $U_U$ ) max. 1 s	<b>2</b> V	
Leakage Current ( $I_L$ ) @ $U_R$ / 5 min / 20 °C	<b>10500</b> $\mu$ A	
ESR typ. @ 100 Hz / 20°C	<b>23</b> m $\Omega$	
Tan $\delta$ typ. @ 100 Hz / 20°C	<b>8</b> %	
Z max. @ 10 kHz / 20°C	<b>20</b> m $\Omega$	
ESL typ.	<b>20</b> nH	
Rated Ripple Current ( $I_R$ ) @ 100 Hz / 85 °C	<b>8,8</b> A	
Useful life @ $I_R$ , $U_R$ , 85 °C	<b>8000</b> h	
IEC Climatic category / Standards	<b>40/085/56</b>	<b>IEC 60384-4</b>
Applications	General Industrial	
Your article No. / Project		