

argus[®]
thermal imaging from e2v

SAFETY AND
INNOVATION

argus[®]
thermal imaging from e2v

**NORTHERN EUROPE
SALES AND SERVICE CENTRE**

Argus
e2v, 106 Waterhouse Lane
Chelmsford
Essex
CM1 2QU
England

T +44 (0)1245 453429
F +44 (0)1245 453396
E-mail: argus.enquiries@e2v.com

SOUTHERN EUROPE

Argus
e2v sas, 16 Burospace
F-91 572 Bièvres
Cedex
France

T +33 (0)1 6019 5500
F +33 (0)1 6019 5529
E-mail: argus.enquiries-fr@e2v.com

**AMERICAS
SALES AND SERVICE CENTRE**

Argus
e2v inc, 520 White Plains Road
Suite 450
Tarrytown
NY 10591
USA

T: +1 (914) 592 6050 or 1-800-342-5338
F: +1 (914) 592-5148
E-mail: argus.enquiries-na@e2v.com

ASIA PACIFIC

Argus
e2v, 11/F
Onfem Tower
29 Wyndham Street
Central Hong Kong

T +852 3679 364 8/9
F +852 3583 1084
E-mail: argus.enquiries-ap@e2v.com



For more information, or to request a trial of
any of the argus thermal imaging cameras go to

argusdirect.com



TT TYPE
MARINE VISION

THE TT TYPE IS A FULL-SPEC THERMAL IMAGING CAMERA, SPECIFICALLY DESIGNED FOR MARINE USE

Argus® is an e2v brand focused on designing and manufacturing the highest quality thermal imaging cameras on the market.

The Argus TT Type thermal camera has been specifically designed to help marine personnel to observe and search for the

heat signatures of people, obstacles and approaching vessels. The TT Type combines the classic torchlight with the latest in infrared technology to create the definitive sailing tool. From private yachts to ocean liners, the TT Type has proven to be an invaluable aid for marine safety.

Charging point, video out and USB point located in the head of the handle

Waterproof; sealed to IP67

Long 5 hour battery life

Simple button functionality

Unrivalled image quality

Lightweight yet rugged

Design incorporates classic torchlight

x2 and x4 digital zoom (320 x 240 model)

ScreenSave™
Capture up to 500 images and 2.5 hours of video on a removable memory card

Direct Temperature Measurement (DTM)

Fast 5 second start-up time

Argus thermal imaging cameras have been supplying the world's institutions for over 30 years and we've combined this extensive experience with the design skills of some of the best engineers in the world to create a series of infrared cameras that are specifically made to take on the toughest and most hazardous environments.

Argus cameras are designed and manufactured using European sourced components, allowing the cameras to be available to the wider export market, and are not subject to the USA ITAR controls (UK export controls apply).

TRIED, TESTED AND TRUSTED

The open water can be a dangerous place, especially at night or in bad weather conditions. There is a multitude of tools on the market to help seafarers stay safe, but only Argus Thermal Imaging is tried, tested and trusted by the Royal Navy.

KEY USES

SAFETY

Man overboard:

The TT Type can be used to locate people quickly in complete darkness or in extreme weather conditions. The built in torchlight can also be used to scan the waters or alert other crew members of a safety risk.

Electrical or mechanical faults:

Quickly identify over-heating or malfunctioning equipment before it turns into a life threatening situation. Faulty wiring and over-heated engines account for the majority of boat fires, keep your crew and your vessel safe at sea.

NAVIGATION

The TT Type is a navigation aid, working alongside the ships radar to shed light on the detected objects and the planned route. Collisions not only endanger the lives of your crew, they can cause costly damage to your vessel. Using the TT Type to see floating objects, or other vessels can help avoid these collisions and keep you afloat. Safely identify;

- Icebergs
- Floating objects
- Swimmers
- Oil spills
- Channel markers
- Piers
- Exposed rock
- Approaching vessels

The torchlight can also help to navigate around the cabin during a power failure.

SECURITY

The TT Type with incorporated torchlight can be used when patrolling the vessel, ensuring your valuable cargo and crew are safe.

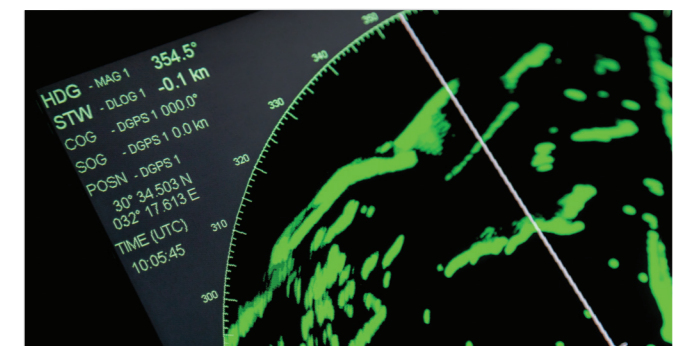
Anti-Piracy:

See approaching vessels on the horizon, allowing plenty of time to assess whether the vessel is a threat and take necessary action.

The TT Type can be customised to suit the needs of your team, including upgrades and accessories to ensure you get the most from your thermal imaging camera.



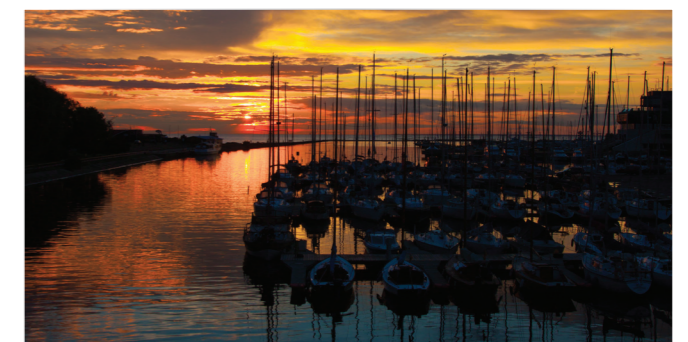
Search and rescue operations



Navigate safely



Detect stowaways



Harbour security

To find out more, or to request a trial go to:

ARGUSDIRECT.COM