

argus[®]
thermal imaging from e2v

SAFETY AND
INNOVATION

argus[®]
thermal imaging from e2v



NORTHERN EUROPE
SALES AND SERVICE CENTRE

Argus
e2v, 106 Waterhouse Lane
Chelmsford
Essex
CM1 2QU
England

T +44 (0)1245 453429
F +44 (0)1245 453396
E-mail: argus.enquiries@e2v.com

SOUTHERN EUROPE

Argus
e2v sas, 16 Burospace
F-91 572 Bièvres
Cedex
France

T +33 (0)1 6019 5500
F +33 (0)1 6019 5529
E-mail: argus.enquiries-fr@e2v.com

AMERICAS
SALES AND SERVICE CENTRE

Argus
e2v inc, 520 White Plains Road
Suite 450
Tarrytown
NY 10591
USA

T: +1 (914) 592 6050 or 1-800-342-5338
F: +1 (914) 592-5148
E-mail: argus.enquiries-na@e2v.com

ASIA PACIFIC

Argus
e2v, 11/F
Onfem Tower
29 Wyndham Street
Central Hong Kong

T +852 3679 364 8/9
F +852 3583 1084
E-mail: argus.enquiries-ap@e2v.com

For more information, or to request a trial of
any of the argus thermal imaging cameras go to

argusdirect.com



P/TYPE
MARINE VISION

MARINE THERMAL IMAGING CAMERA
DETECT THREATS / NAVIGATE SAFELY / SAVE LIVES



THE P TYPE IS A FULL-SPEC THERMAL IMAGING CAMERA, SPECIFICALLY DESIGNED FOR MARINE USE

Argus is an e2v brand focused on designing and manufacturing the highest quality thermal imaging cameras on the market.

The Argus P Type monocular thermal camera has been specifically designed to help marine personnel detect the heat signatures of people, hidden obstacles and approaching vessels.

Lightweight
0.95kg (2.1lb)

Long 5 hour battery life

x2 and x4 digital zoom
(320 x 240 model)

Unrivalled image quality
320 x 240 uncooled sensor (160 x 120 option available)

Fast 5 second start-up time

OLED Display

Simple button functionality

ScreenSave™
Capture up to 1000 images and 8 hours of video on a removable memory card

The P Type has proven to be a vital piece of search and rescue equipment, allowing you to identify, observe and monitor objects over 1 mile away in total darkness. From private yachts to Naval ships, the P Type has proven to be an invaluable aid to navigating waters safely.

Argus cameras are designed and manufactured using European sourced components, allowing the cameras to be available to the wider export market, and are not subject to the USA ITAR controls (UK export applies).

TRIED, TESTED AND TRUSTED

The P Type is ideal for applications such as search and rescue, night time navigation and ship security surveillance.

KEY USES

Man over-board

The P Type can be used to locate people in the water quickly picking up heat signatures, hastening rescue efforts and increasing survival rates.

Navigation

The P Type serves as a navigation aid, detecting floating objects in zero visibility or night-time conditions.

Safely identify;

- Exposed rock
- Floating objects
- Channel markers
- Approaching vessels



Security

The P Type can be used to quickly check for hidden dangers such as hostile vessels or concealed stowaways. The camera can also be used to gauge a headcount in bad visibility conditions.



Shuttered OLED display

The P Type features a superb clarity OLED display, which gives true black as backlights are not required. The OLED Display is viewed through a shuttered eye-cup, meaning that no light is given off.

Lens Options

By changing the lens, the P Type can adapt to a range of situations such as surveillance operations, search and rescue missions, or assessing approaching vessels.

Tripod mount

The P Type features a standard tripod mount, allowing fixed surveillance points to be setup using the video out feature.

Colour Modes

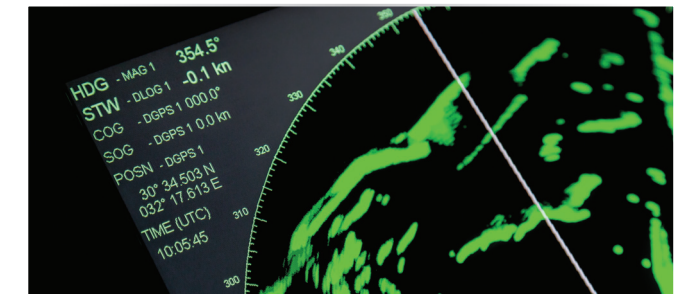
Additional colour modes are also available, these can transform the performance of the camera for a wide range of applications.

Video and Image capture

Video and image capture is also available, making evidence collection simple and effective.



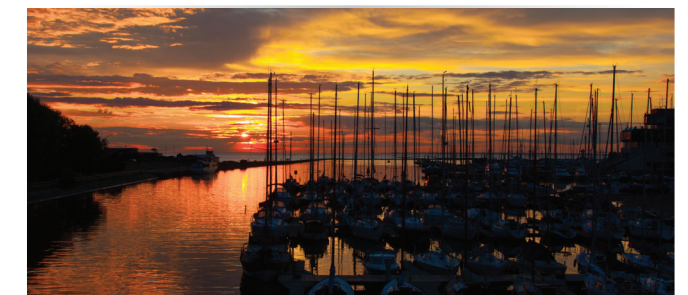
Search and rescue operations



Navigate safely



Detect stowaways



Harbour security

The P Type can be customised to suit the needs of your team, including upgrades and accessories to ensure you get the most from your thermal imaging camera.

To find out more, or to request a trial go to:

ARGUSDIRECT.COM