

**argus**<sup>®</sup>  
thermal imaging from e2v

SAFETY AND  
INNOVATION

**argus**<sup>®</sup>  
thermal imaging from e2v

**NORTHERN EUROPE**  
SALES AND SERVICE CENTRE

Argus  
e2v, 106 Waterhouse Lane  
Chelmsford  
Essex, CM1 2QU  
England  
T +44 (0)1245 453429  
F +44 (0)1245 453396  
E-mail: argus.enquiries@e2v.com

**SOUTHERN EUROPE**

Argus  
e2v sas, 16 Burospace  
F-91 572 Bièvres  
Cedex  
France  
T +33 (0)1 6019 5500  
F +33 (0)1 6019 5529  
E-mail: argus.enquiries-fr@e2v.com

**AMERICAS**  
SALES AND SERVICE CENTRE

Argus  
e2v inc, 520 White Plains Road  
Suite 450  
Tarrytown  
NY 10591  
USA  
T: +1 (914) 592 6050 or 1-800-342-5338  
F: +1 (914) 592-5148  
E-mail: argus.enquiries-na@e2v.com

**ASIA PACIFIC**

Argus  
e2v, 11/F  
Onfem Tower  
29 Wyndham Street  
Central Hong Kong  
T +852 3679 364 8/9  
F +852 3583 1084  
E-mail: argus.enquiries-ap@e2v.com



For more information, or to request a trial of  
any of the argus thermal imaging cameras go to

**argusdirect.com**



**P/TYPE**  
COVERT SURVEILLANCE

**THE P TYPE IS A FULL-SPEC THERMAL IMAGING CAMERA, SPECIFICALLY DESIGNED FOR SURVEILLANCE USE**

Argus® is an e2v brand focused on designing and manufacturing the highest quality thermal imaging cameras on the market.

Argus thermal imaging technology is a cost-effective addition to your law enforcement team, enabling officers to observe a scene from a distance without revealing their location.

Lightweight  
0.95kg (2.1lb)

Fast 5 second  
start-up time

x2 and x4 digital zoom  
(320x240 model only)

320x240 uncooled  
sensor (160x120  
option available)



OLED display

Long 5 hour  
battery life

Simple button  
functionality

ScreenSave™

Capture up to  
1,000 images and  
8 hours of video  
on a removable  
memory card

Argus Handheld Thermal Imaging Cameras (TICS) are essential in the fight against crime, especially at night or in zero visibility conditions. The Argus P Type will expose criminals that are camouflaged or hiding in shadows or bushes, otherwise invisible to the naked eye.

Argus cameras are designed and manufactured using European sourced components, allowing the cameras to be available to the wider export market, and are not subject to the USA ITAR controls (UK export applies).

**KEY APPLICATIONS**

- Covert surveillance operations
- Search and rescue missions
- Routine patrols
- Collision response
- Gathering forensic evidence
- Occupancy evaluation

**KEY FEATURES**

**Lens options**

By changing the lens, the P Type can adapt to a range of situations such as covert surveillance operations, search and rescue missions or occupancy evaluation. Easily identify and capture images of objects over 1,000m away.



**Shuttered OLED display**

The P Type features a superb clarity OLED display, which gives true black as backlights are not required. The OLED display is viewed through a shuttered eye-cup, meaning that no light is given off.



**Unparalleled image quality**

The 320x240 sensor option provides the highest detail for demanding requirements. The 160 x 120 sensor option, enhanced with Argus proprietary signal processing algorithms, provides an excellent image for general operation.

**Tripod mount**

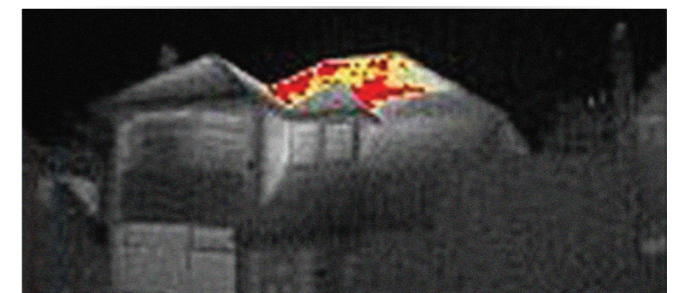
The P Type has an integrated 1/4" tripod mount, perfect for fixed and stabilised surveillance points.

**Diopre adjustment**

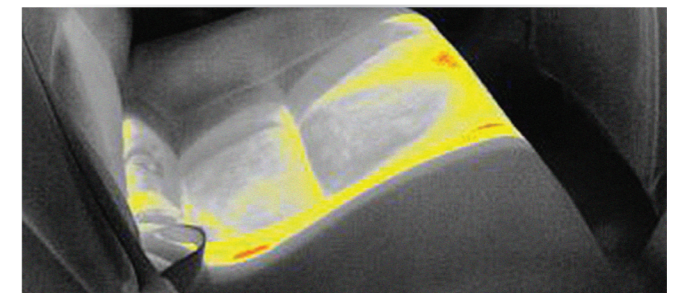
Adjust the settings to compensate for less than perfect vision. The majority of users will be able to remove their glasses and use the P Type as normal.



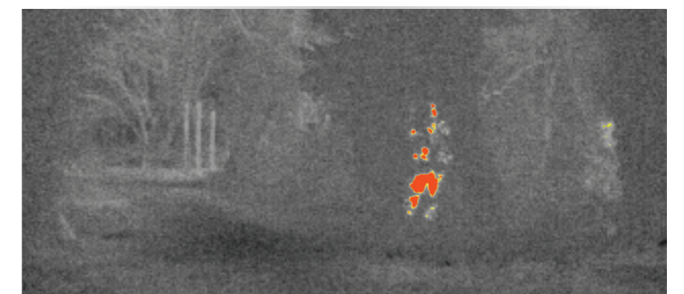
Observe a scene and gather evidence from a distance



Cannabis farm detected in the loft of a residential house



Occupancy evaluation



Fugitive hiding in light foliage

The Argus P Type can be customised to suit the needs of your team, including upgrades and accessories to ensure you get the most from your thermal imaging camera.

To find out more, or to request a trial go to:

[ARGUSDIRECT.COM](http://ARGUSDIRECT.COM)