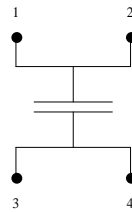
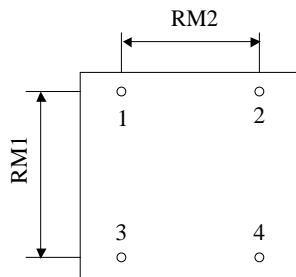


#5587

METALLIZED POLYPROPYLENE CAPACITORS

PPMJC 100-10.0 g K

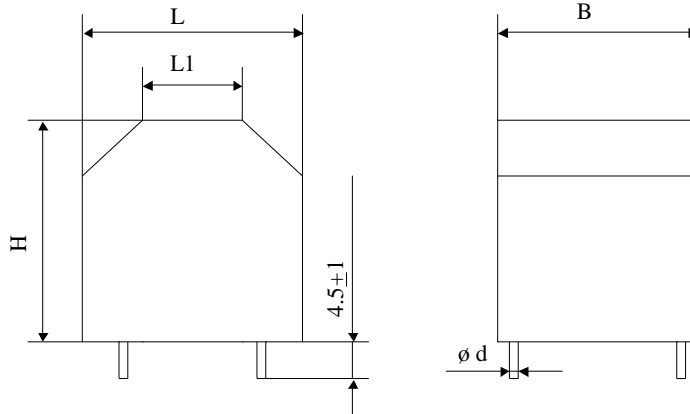


Preliminary datasheet

Printed circuit board mounting

Self-extinguishing plastic housing

Epoxy resin sealing



Parameter	Symbol		Value	Unit	Condition
Capacitance	C		10	μF	1 V / 1 kHz
Tolerance			± 10	%	
Rated voltage	Un DC		1000	VDC	
Rated voltage	Un AC				
RMS current	I RMS max.				
RMS current	I RMS max.				
slope of voltage variation	du/dt max.				
Repetitive surge current	I cr. max				
Tangente delta dielectric	tgδo				
Serie resistance	RS				
Stray inductance	ESL				
Insulation resistance	Ri x C				
Test voltage between terminals	U T1		1500	VDC	10 s
Climatic category			40/105/56		
Estimated operational life (-3%)			> 700	h	Un DC / 105°C Hot spot
Dimension	Symbol			Unit	Conditions
Width	B		36	mm	
Length	L		40	mm	
	L1		18	mm	
Height	H		40	mm	
Terminals tinned wire	ø d		1.2	mm	
RM1			30	mm	
RM2			25	mm	
	M1				
	M0				
	Modification	Date	Visa émetteur		

Condensateurs CH 1401 Yverdon-les-Bains
 Kondensatoren Tel.: ++41 24 445 66 88
 Capacitors Fax: ++41 24 445 66 89

Le lanché
Capacitors
A FISCHER & TAMBACHE COMPANY

HJJ

14.07.2006

faisab5587.XLS