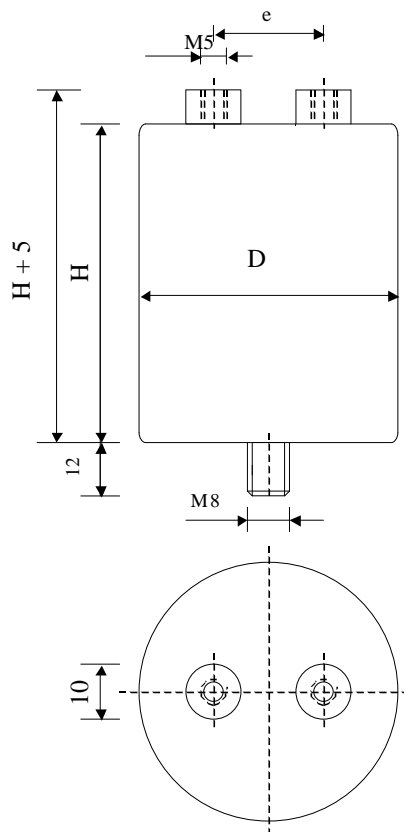


#6217

Discharge capacitors

PPMF 200-050 cv6 K



Dielectric of metallized polypropylene

Threaded outputs

Resin end sealing

Aluminium case

Parameter	Symbol	Value	Unit	Condition
Capacitance	C	0.5	$\mu\text{F}$	1 V / 1 kHz
Tolerance		$\pm 10$	%	
Rated voltage	Un DC	2000	VDC	
Rated voltage	Un AC	660	VAC	50 Hz to 300 Hz
RMS Current permanent	I <sub>eff max.</sub>	8	A <sub>eff</sub>	10 kHz to 100 kHz
Repetitive surge current	I <sub>cr. max</sub>	100	A	
Tangent delta	tg $\delta$	$\leq 5$	$10^{-4}$	1 V / 1 kHz
Equivalent serie resistance	ESR	$< 20.0$	m $\Omega$	1 V / 10 kHz
Stray inductance	ESL	$\leq 90$	nH	
Insulation resistance	Ri x C	$\geq 20'000$	s	500 VDC - 1 min
Test voltage between terminals	U T1	3000	VDC	10 s
Test voltage terminals to case	U T2	3000	VAC	50 Hz / 1 min
Operating temp.		- 25 / + 70 °C		
Estimated operational life		$> 10^7$	Pulses	2000 V / 100 A

Dimension	Symbol	Value	Unit	Conditions
Diameter	D	35	mm	
Height	H	60	mm	
Terminals				
Thread		M5 x 8	mm	
Thread spacing	e	$15 \pm 0.5$	mm	
Fixing stud		M8 x 12	mm	
	M1			
	M0			
	Modification	Date	Visa émetteur	

Condensateurs CH 1400 Yverdon, Switzerland  
 Kondensatoren Tel.: ++41 24 447 22 82  
 Capacitors Fax: ++41 24 447 22 85

**Leclanché**  
**Capacitors**  
A FISCHER & TAUSSCH COMPANY

HJJ

www.Lcap.ch  
 19.09.2013

capinfo@Lcap.ch  
 faisab6217.XLS