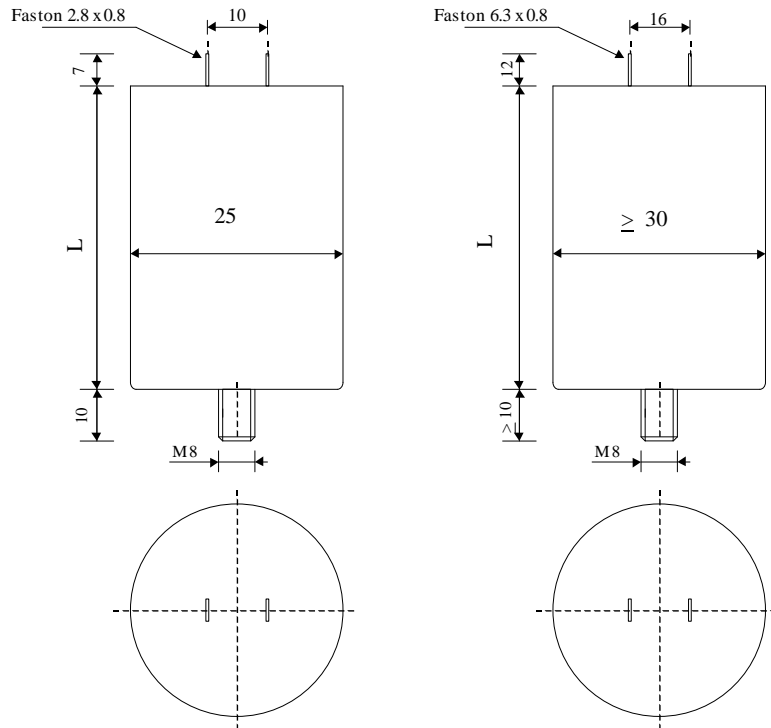


Technical Specifications for PPM cv2 capacitors

- Aluminium case
- Threaded stud at base
- Radial fast-on connectors
- Epoxy-resin end seal



Mechanical / Electrical characteristics:

Type LSA	Cn [μ F] $\pm 10\%$	ϕ [mm]	L [mm]	Un [VDC]	Un [VAC]	Ut1 diel. [VDC]	Ut2 case [VAC]	I RMS 10 kHz [A]	ESR 10kHz m Ω
PPM 50-075 cv2	0.75	35	56	500	330	1260	2500	7.5	10.5
PPM 80-075 cv2	0.75	35	56	800	400	1600	2500	7.5	10.5
PPM 100-047 cv2	0.47	35	56	1000	480	1800	2500	6.5	14.0
PPM 100-075 cv2	0.75	40	56	1000	480	1800	2500	8.0	10.5
PPM 110-010 cv2	0.1	25	53	1100	500	1800	3000	3.0	42.0
PPM 125-025 cv2	0.25	25	53	1250	500	2200	3000	4.0	25.0
PPM 125-050 cv2	0.5	35	56	1250	500	2200	3000	6.5	14.0
PPM 125-1.5 cv2	1.5	45	83	1250	500	2200	3000	11.0	9.0
PPM 225-025 cv2	0.25	30	56	2250	660	3800	3000	5.3	18.0
PPM 225-050 cv2	0.5	40	56	2250	660	3800	3000	7.4	12.0
PPM 225-1.0 cv2	1	45	83	2250	660	3800	3000	11.0	9.0