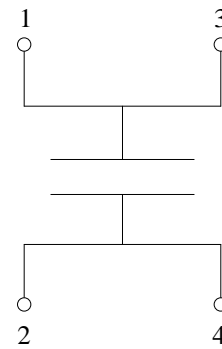
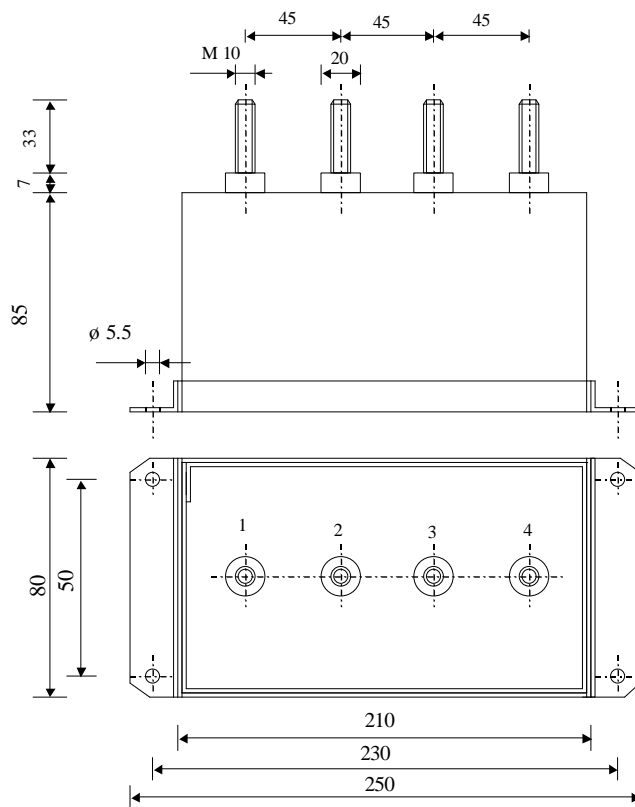


#5737

## Filtering Capacitors

PPM 120-140.0 r



Dielectric of metallized polypropylene

Threaded outputs

Resin end sealing

Aluminium case  
thick 1.2 mm

Parameter	Symbol	Value	Unit	Condition
Capacitance	C	140	$\mu\text{F}$	1 V / 1 kHz
Tolerance		-5 / + 10	%	
Rated voltage	Un DC	1'200	VDC	
Maximum voltage	Us max.	1'700	V	
RMS Current	I <sub>eff</sub> max	135	A <sub>eff</sub>	2.7 to 7.0 kHz
Tangent delta dielectric	tg $\delta_o$	2	$10^{-4}$	
Serie resistance	RS	$\leq 0.8$	m $\Omega$	
Stray inductance	ESL	$\leq 45$	nH	
Insulation resistance	Ri x C	> 20'000	s	500 VDC - 1 min
Test voltage between terminals	U T1	2'100	VDC	10 s
Test voltage between terminals to case	U T2	3'000	VAC	1 min
Dimension	Symbol	Value	Unit	Condition
Width	B	80	mm	
Length	L	210	mm	
Height	H	85	mm	
Thread		4 x M 10 x 33	mm	
Thread spacing		45	mm	
	M1			
	M0			
	Modification	Date	Visa émetteur	

Condensateurs CH 1400 Yverdon-les-Bains  
 Kondensatoren Tel.: ++41 24 445 66 88  
 Capacitors Fax: ++41 24 445 66 89

**Le lanché**  
**Capacitors**  
A FISCHER & TANGHE COMPANY

HJJ

26.06.2008

faisab5737.XLS