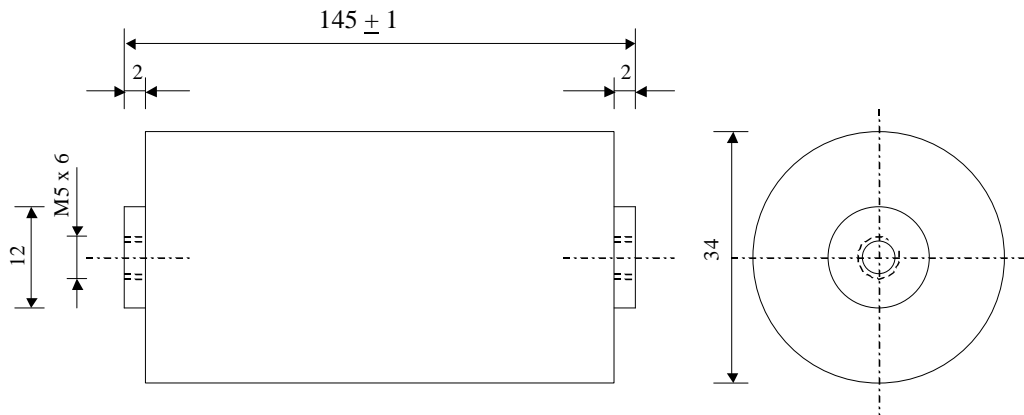


#5593


Power Electronics Capacitors

PAM 300-01250 dv K



Dielectric of metallized polypropylene - Plastic sleeve

Epoxy resin end sealing - Threaded outputs

Parameter	Symbol	Value	Unit	Condition		
Capacitance	C	0.125	μF	1 V / 1 kHz		
Tolerance		± 10	%			
Rated voltage	Un RMS	3000	Veff	50 to 1000 Hz		
Rated voltage	Un DC	7500	VDC			
RMS Current max	I _{eff}	7.5	A	10 kHz to 300 kHz		
slope of voltage variation	du/dt max.	3000	V/μsec	max. repetitive		
Repetitive surge current	I _{cr. max}	375	A			
Tangente delta	tgδ	4	10 ⁻⁴	10 kHz		
Stray inductance	ESL	≤ 60	nH			
Insulation resistance	Ri x C	> 30'000	s	500 VDC - 1 min		
Test voltage between terminals	U T1	12	kVDC	60 s		
Climatic category (IEC68)		40/85/56				
Estimated operational life (-3%)		100'000	h	Un DC - 70°C		
Dimension	Symbol	Value	Unit	Conditions		
Diameter	ø D	34	mm			
Height	H	145	mm			
Terminals						
Thread		M5 x 6	mm			
	D1	12	mm			
	M1					
	M0					
	Modification	Date	Visa émetteur			
Condensateurs	CH 1401 Yverdon-les-Bains			HJJ		
Kondensatoren	Tel.: ++41 24 445 66 88				22.09.2006	faisab5593.XLS
Capacitors	Fax: ++41 24 445 66 89					