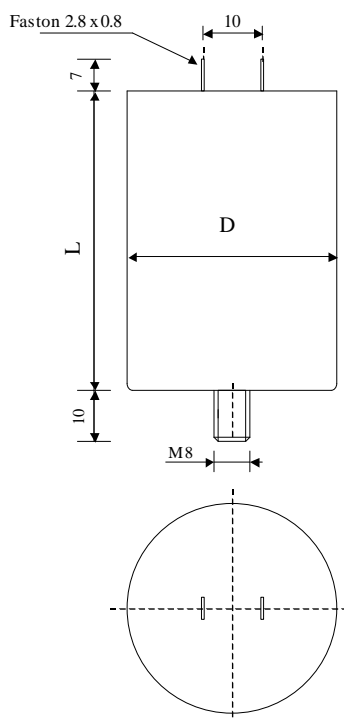


#6240

METALLIZED POLYPROPYLENE CAPACITORS

PAM 16-4.7 cv2 K



Dielectric of metallized polypropylene

FAST-ON 2.8 x 0.8 mm

Epoxy resin end sealing

Aluminium case

Parameter	Symbol	Value	Unit	Condition
Capacitance	C	4.7	μF	1 V / 1 kHz
Tolerance		± 10	%	
Rated voltage	Un AC	160	VAC	50Hz to 100 Hz
slope of voltage variation	du/dt max.	30	V/ μsec	max. repetitive
Repetitive surge current	I cr. max	141	A	
Tangent delta	tg δ	≤ 10	10^{-4}	1 V / 1 kHz
Stray inductance	ESL	≤ 70	nH	
Insulation resistance	Ri	> 4200	M Ω	100 VDC - 1 min
Test voltage between terminals	U T1	256	VAC	50 Hz / 10 s
Test voltage terminals to case	U T2	1500	VAC	50 Hz / 1 min
Operating Temperature		-40 to + 85	$^{\circ}\text{C}$	

Dimension	Symbol	Value	Unit	Conditions
Diameter	D	25	mm	
Height	H	50	mm	
Terminals				
fast-on		2.8 x 0.8	mm	
fixing stud		M8 x 10	mm	
	M1			
	M0			
	Modification	Date	Visa émetteur	

Condensateurs CH 1400 Yverdon, Switzerland
 Kondensatoren Tel.: ++41 24 445 66 88
 Capacitors Fax: ++41 24 445 66 89

Lecaniché
Capacitors
A FISCHER & TASSI SCHNEIDER COMPANY

HJJ

www.Lcap.ch
 13.01.2014

capinfo@Lcap.ch
 faisab6240.XLS