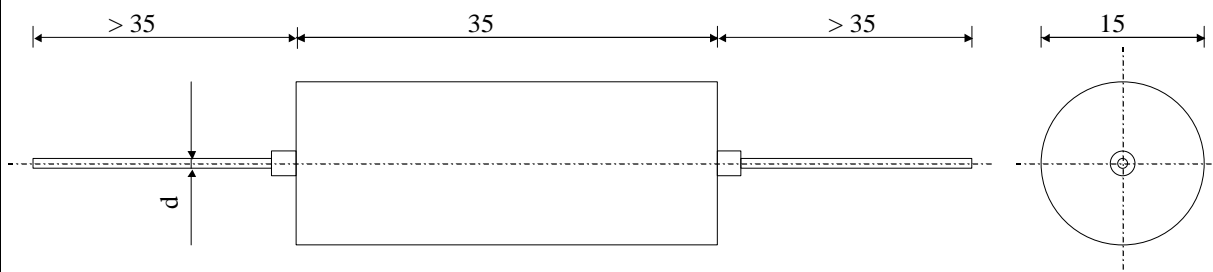


3745

HIGH STABILITY CAPACITORS

TYPE
MKS 6-6.8 v F

Mixed metallized dielectric

Metal case, non magnetic - Glas sealed

Plastic sleeve transparent

Paramètre	Symbol	Value	Unit	Condition
Capacitance	C	6.8	μF	20°C, 1 kHz
Tolérance		± 1	%	
Rated voltage	Un DC	63	VDC	
Rated voltage	Un AC	40	VAC	50 Hz
Tangente delta	tgδ	≤ 20 E-4		1 V / 1 kHz / 25 °C
Stray inductance	ESL	≤ 60	nH	
Insulation resistance	Ri x C	> 5'000	s	10 VDC - 1 min
Test voltage between terminals	U T	100	VDC	10 s.
Climatic category		55/100/56		
Estimated operational life (-3%)		100'000	h	Un DC / 70°C

Dimension	Symbole	Value	Unité	Conditions
Diameter	ø D	15	mm	
Heigth	H	35	mm	
Terminals				
Axial tinned wire	d	1	mm	

	M2			
	M1			
	M0			
	Modification	Date	Visa émetteur	

Condensateurs CH 1401 Yverdon-les-Bains
 Kondensatoren Tel.: ++41 24 445 66 88
 Capacitors Fax: ++41 24 445 66 89

Le lanché
Capacitors
ATFISBURY & HALLS COMPANY

HJJ

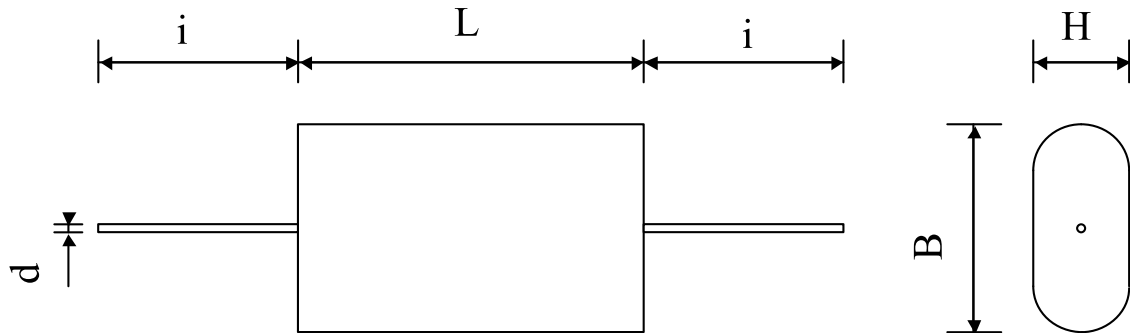
15.07.2005

MKS3745.XLS

#5701

HIGH STABILITY FILM CAPACITORS

MKS 63 IOPK 6470

Replaces the
MKC 63 serie

Dielectric of metallized polyphenylene sulfide

Polyester wrapped, Flammability UL 510 / Epoxy resin sealing UL 94-V0

Parameter	Symbol		Value	Unit	Condition
Capacitance	C		4.7	μF	1 V / 1 kHz
Tolerance			± 10	%	
Rated voltage	Un DC		100	VDC	85° C
Category voltage	Uc		80	VDC	100 °C
Rated voltage	Un AC		40	Veff	50 Hz
slope of voltage variation	du/dt max.		5	V/ μsec	max. repetitive
Repetitive surge current	I cr. max		23.5	A	
Tangent delta	tg δ		≤ 10	10^{-4}	1 V / 1 kHz / 22°C
Stray inductance	ESL		≤ 35	nH	
Insulation resistance	Ri		> 2000	M Ω	100 VDC - 1 min
Test voltage between terminals	U T1		160	VDC	10 s
Operating temperature			- 55 ... + 100	°C	
Dimension	Symbol			Unit	Conditions
Width	B max		20.5	mm	
Height	H max		8	mm	
Length	L max		33.5	mm	
Terminals					
Axial tinned wire	d		$\varnothing 0.8 \times 40$	mm	
	M1				
	M0				
	Modification	Date	Visa émetteur		

Condensateurs CH 1400 Yverdon-les-Bains
 Kondensatoren Tel.: ++41 24 445 66 88
 Capacitors Fax: ++41 24 445 66 89

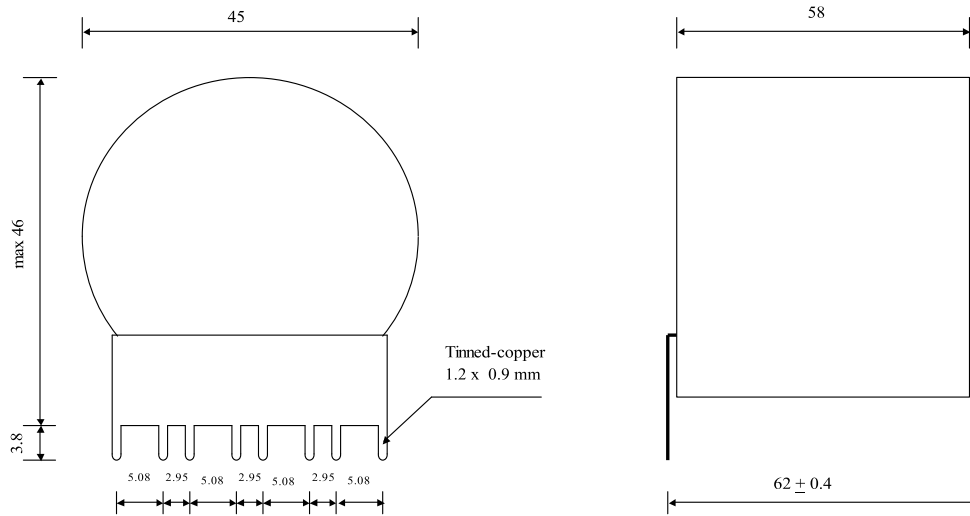
Le laniché
Capacitors
A FISCHER & FANSCHE COMPANY

HJJ

13.12.2007

faisab5701.XLS

Preliminary Data Sheet



Dielectric of metallized PPS

Polyester wrapped / Epoxy resin sealing

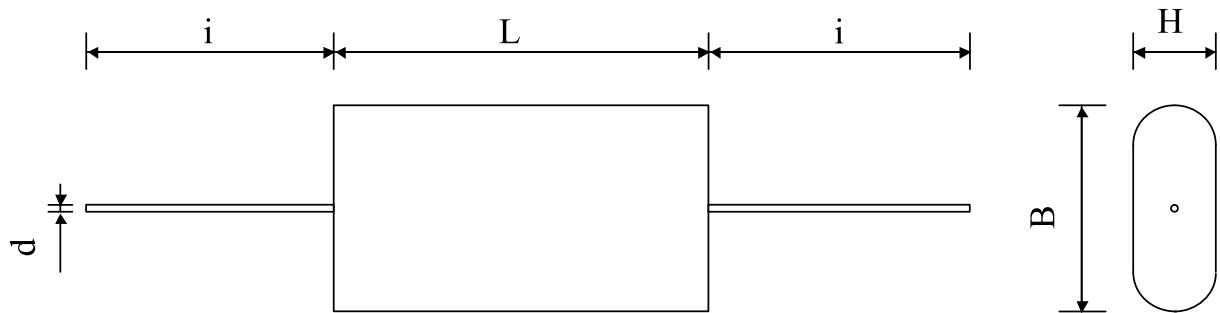
Terminals for connection to Printed Circuit Board

Parameter	Symbol	Value	Unit	Condition
Capacitance	C	15	μF	1 V / 1 kHz
Tolerance		± 10	%	
Rated voltage	Un DC	400	VDC	100°C
RMS current	I RMS max.	14	Aeff	20kHz
slope of voltage variation	du/dt max.	110	V/μsec	max. repetitive
Repetitive surge current	I cr. max		A	
Tangent delta	tgδ		1C ⁴	1 kHz
Equivalent serie resistance	ESR		mΩ	100 kHz
Stray inductance	ESL		nH	
Insulation resistance	Ri		MΩ	100 VDC - 1 min
Test voltage between terminals	U T1		VDC	10 s
Operating temperature		- 55 / + 115 °C		
Dimension	Symbol		Unit	Conditions
Diameter		45	mm	
Height		46	mm	
Length		58	mm	
Terminals				
Tinned-copper	(8 x)	1.2 x 0.9	mm	
	M1			
	M0			
	Modification	Date	Visa émetteur	

#5725

HIGH TEMPERATURE FILM CAPACITORS

MKS 50-090 df K



Dielectric of metallized polyphenylene sulfide

Flame retardant polyester wrapped / Epoxy resin sealing UL 94-V0

Parameter	Symbol		Value	Unit	Condition
Capacitance	C		0.9	μF	1 V / 1 kHz
Tolerance			± 10	%	
Rated voltage	U_n DC		500	VDC	
Rated voltage	U_n AC		250	V_{eff}	50 to 800 Hz
RMS current	I RMS ma		6.7	A_{eff}	10 kHz
slope of voltage variation	du/dt max.		40	V/ μsec	max. repetitive
Repetitive surge current	I cr. max		40	A	
Tangent delta	$\text{tg}\delta$		≤ 6	10^{-4}	1 V / 1 kHz
Tangent delta	$\text{tg}\delta$		≤ 18	10^{-4}	1 V / 10 kHz
Stray inductance	ESL		≤ 50	nH	
Insulation resistance	R_i		$> 10'000$	$M\Omega$	100 VDC - 1 min
Test voltage between terminals	U T1		800	VDC	10 s
Operating temperature			- 55 ... + 125	$^{\circ}\text{C}$	
Dimension	Symbol			Unit	Conditions
Width	B max		25	mm	
Height	H max		14.5	mm	
Length	L max		33	mm	
Terminals					
Axial tinned wire	d		$\emptyset 1.0 \times 30$	mm	
	M1				
	M0				
	Modification	Date	Visa émetteur		

Condensateurs CH 1400 Yverdon-les-Bains
 Kondensatoren Tel.: ++41 24 445 66 88
 Capacitors Fax: ++41 24 445 66 89

Le lanché
Capacitors
A FRODINI & TALDORE COMPANY

HJJ

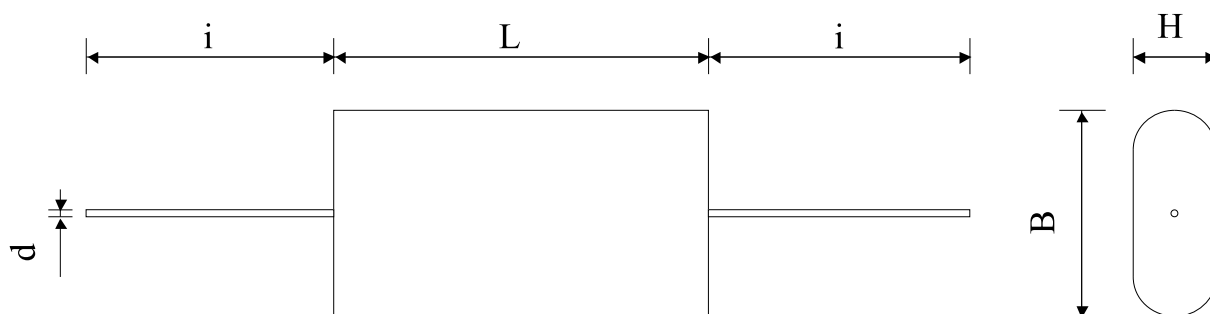
22.05.2008

faisab5725.XLS

#5616

HIGH TEMPERATURE FILM CAPACITORS

MKS 50-1.0 df K



Dielectric of metallized polyphenylene sulfide

Polyester wrapped / Epoxy resin sealing

Parameter	Symbol		Value	Unit	Condition
Capacitance	C		1	μF	1 V / 1 kHz
Tolerance			± 10	%	
Rated voltage	Un DC		500	VDC	
Rated voltage	Un AC		250	Veff	50 to 800 Hz
RMS current	I RMS max.		7	Aeff	10 kHz
slope of voltage variation	du/dt max.		30	V/ μsec	max. repetitive
Repetitive surge current	I cr. max		30	A	
Tangente delta	$\text{tg}\delta$		≤ 6	10^{-4}	1 V / 1 kHz
Tangente delta	$\text{tg}\delta$		≤ 18	10^{-4}	1 V / 10 kHz
Stray inductance	ESL		≤ 50	nH	
Insulation resistance	Ri		$> 10'000$	M Ω	100 VDC - 1 min
Test voltage between terminals	U T1		800	VDC	10 s
Operating temperature			- 55 ... + 125	$^{\circ}\text{C}$	
Dimension	Symbol			Unit	Conditions
Width	B max		23.5	mm	
Height	H max		10.5	mm	
Length	L max		45	mm	
Terminals					
Axial tinned wire	d		$\varnothing 1.0 \times 30$	mm	
	M1				
	M0				
	Modification	Date	Visa émetteur		

Condensateurs CH 1401 Yverdon-les-Bains
 Kondensatoren Tel.: ++41 24 445 66 88
 Capacitors Fax: ++41 24 445 66 89

Le Janché
Capacitors
A FISCHER & TALESCHE COMPANY

HJJ

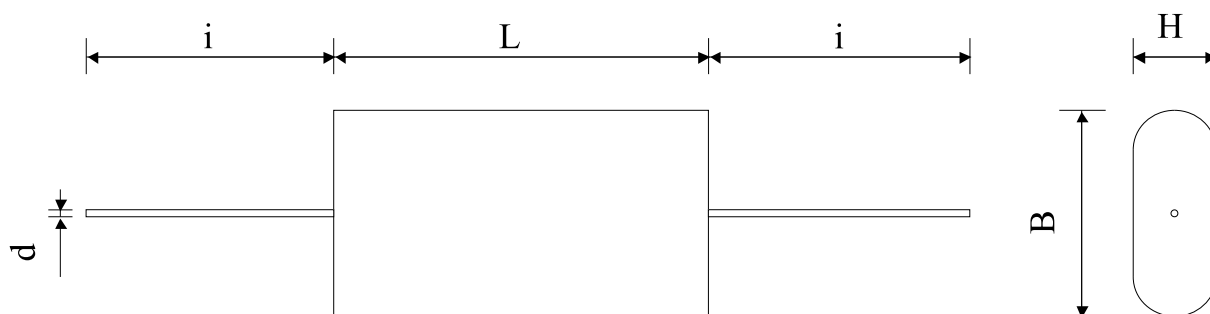
08.12.2006

faisab5616.XLS

#5615

HIGH TEMPERATURE FILM CAPACITORS

MKS 50-2.2 df K



Dielectric of metallized polyphenylene sulfide

Polyester wrapped / Epoxy resin sealing

Parameter	Symbol		Value	Unit	Condition
Capacitance	C		2.2	μF	1 V / 1 kHz
Tolerance			± 10	%	
Rated voltage	Un DC		500	VDC	
Rated voltage	Un AC		250	Veff	50 to 800 Hz
RMS current	I RMS max.		7	Aeff	10 kHz
slope of voltage variation	du/dt max.		30	V/ μsec	max. repetitive
Repetitive surge current	I cr. max		66	A	
Tangente delta	tg δ		≤ 6	10^{-4}	1 V / 1 kHz
Tangente delta	tg δ		≤ 18	10^{-4}	1 V / 10 kHz
Stray inductance	ESL		≤ 50	nH	
Insulation resistance	Ri		> 4500	M Ω	100 VDC - 1 min
Test voltage between terminals	U T1		800	VDC	10 s
Operating temperature			- 55 ... + 125	$^{\circ}\text{C}$	
Dimension	Symbol			Unit	Conditions
Width	B max		31	mm	
Height	H max		18	mm	
Length	L max		45	mm	
Terminals					
Axial tinned wire	d		$\varnothing 1.0 \times 30$	mm	
	M1				
	M0				
	Modification	Date	Visa émetteur		

Condensateurs CH 1401 Yverdon-les-Bains
 Kondensatoren Tel.: ++41 24 445 66 88
 Capacitors Fax: ++41 24 445 66 89

Le Janché
Capacitors
A FISCHER & TALESCHE COMPANY

HJJ

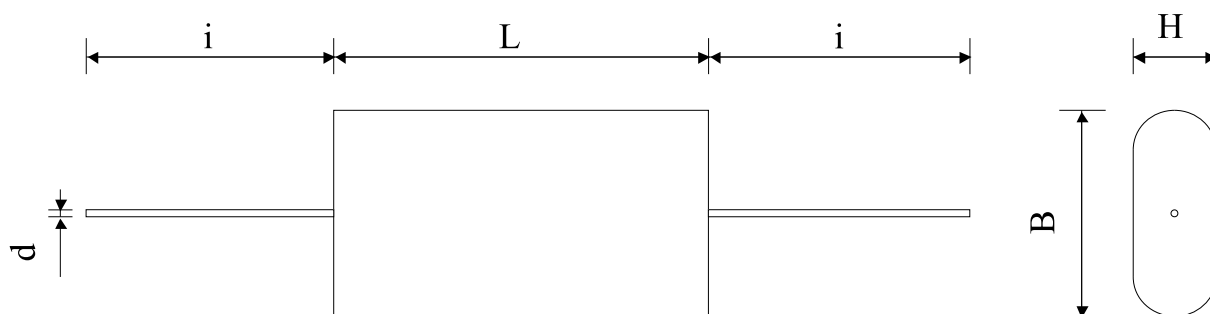
08.12.2006

faisab5615.XLS

#5588

HIGH TEMPERATURE FILM CAPACITORS

MKS 50-4.7 df K



Dielectric of metallized polyphenylene sulfide

Polyester wrapped / Epoxy resin sealing

Parameter	Symbol		Value	Unit	Condition
Capacitance	C		4.7	μF	1 V / 1 kHz
Tolerance			± 10	%	
Rated voltage	Un DC		500	VDC	
Rated voltage	Un AC		250	Veff	50 to 800 Hz
RMS current	I RMS max.		12	Aeff	10 kHz
slope of voltage variation	du/dt max.		30	V/ μsec	max. repetitive
Repetitive surge current	I cr. max		141	A	
Tangente delta	$\text{tg}\delta$		≤ 4	10^{-4}	1 V / 1 kHz
Tangente delta	$\text{tg}\delta$		≤ 22	10^{-4}	1 V / 10 kHz
Stray inductance	ESL		≤ 50	nH	
Insulation resistance	Ri		> 2100	M Ω	100 VDC - 1 min
Test voltage between terminals	U T1		800	VDC	10 s
Operating temperature			- 55 ... + 125	$^{\circ}\text{C}$	
Dimension	Symbol			Unit	Conditions
Width	B max		42	mm	
Height	H max		26	mm	
Length	L max		45	mm	
Terminals					
Axial tinned wire	d		$\varnothing 1.0 \times 30$	mm	
	M1				
	M0				
	Modification	Date	Visa émetteur		

Condensateurs CH 1401 Yverdon-les-Bains
 Kondensatoren Tel.: ++41 24 445 66 88
 Capacitors Fax: ++41 24 445 66 89

Le Janché
Capacitors
A FISCHER & TALESCHE COMPANY

HJJ

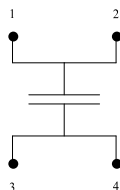
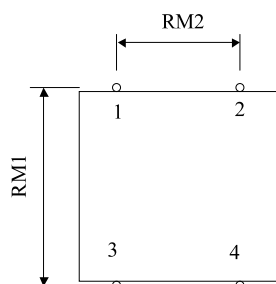
07.08.2006

faisab5588.XLS

#5639

HIGH TEMPERATURE FILM CAPACITORS

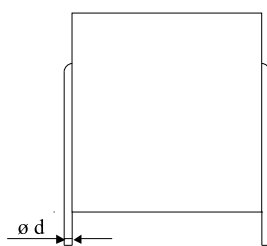
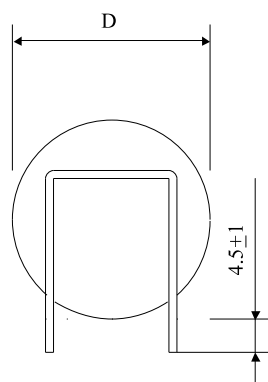
MKS-4 50-5.6 nr K



Printed circuit board mounting

Dielectric of

metallized polyphenylene sulfide



Parameter	Symbol	Value	Unit	Condition
Capacitance	C	5.6	µF	1 V / 1 kHz
Tolerance		± 10	%	
Rated voltage	Un DC	500	VDC	
Rated voltage	Un AC	250	Veff	50 Hz
RMS current	I RMS max.	6.5	Aeff	10 kHz / 110 °C
slope of voltage variation	du/dt max.	40	V/µsec	max. repetitive
Repetitive surge current	I cr. max	224	A	
Tangente delta	tgδ	≤ 6	10 ⁻⁴	1 V / 1 kHz
Tangente delta	tgδ	≤ 18	10 ⁻⁴	1 V / 10 kHz
Stray inductance	ESL	≤ 50	nH	
Insulation resistance	Ri	> 1'000	MΩ	100 VDC - 1 min
Test voltage between terminals	U T1	800	VDC	10 s
Operating temperature		- 55 ... + 125	°C	
Dimension	Symbol	Value	Unit	Conditions
Diameter	D	37	mm	
Terminals tinned wire (4 x)	ø d	1.2	mm	
RM1		40	mm	
RM2		25	mm	
	M1			
	M0			
	Modification	Date	Visa émetteur	

Condensateurs
Kondensatoren
Capacitors

CH 1400 Yverdon-les-Bains
Tel.: ++41 24 445 66 88
Fax: ++41 24 445 66 89

Le lanché
Capacitors
A FISCHER & TAUERCHER COMPANY

HJJ

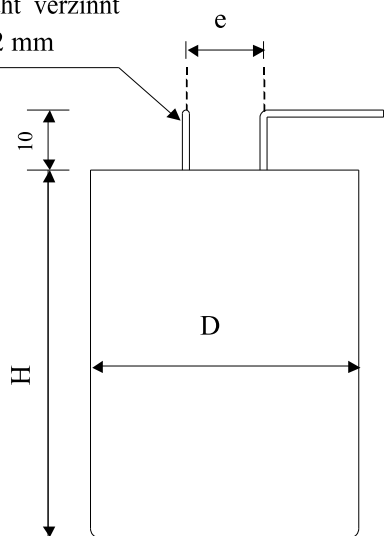
14.02.2007

faisab5639.XLS

#5724

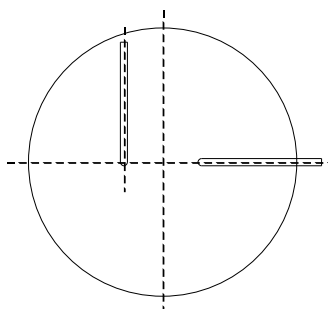
HIGH TEMPERATURE FILM CAPACITORS

MKS 63-071 c3 G

Küpf Draht verzinkt
ø 1.2 mmDielectric of metallized
polyphenylene sulfide

Resin end sealing

Aluminium case



Parameter	Symbol		Value	Unit	Condition
Capacitance	C		0.71	µF	1 V / 1 kHz
Tolerance			± 2	%	
Rated voltage	Un DC		630	VDC	
Rated voltage	Un AC		250	Veff	1 kHz
slope of voltage variation	du/dt max.		150	V/µsec	max. repetitive
Repetitive surge current	I cr. max		107	A	
Tangent delta	tgδ		≤ 10	10 ⁻⁴	1 V / 1 kHz / 22°C
Stray inductance	ESL		≤ 50	nH	
Insulation resistance	Ri		> 8000	MΩ	100 VDC - 1 min
Test voltage between terminals	U T1		625	VAC	50 Hz / 2 sec.
Test voltage terminals to case	U T2		2500	VAC	50 Hz / 2 sec.
Operating temperature			- 40 ... + 85	°C	
Estimated operational life (-3%)			100'000	h	Un AC / 1 kHz

Dimension	Symbol			Unit	Conditions
Diameter	D		30	mm	
Height	H		40	mm	
Terminals					
Lead	ø		1.2	mm	
Thread spacing	e		10.0 ± 2	mm	
	M1				
	M0				
	Modification	Date	Visa émetteur		

Condensateurs CH 1400 Yverdon-les-Bains
 Kondensatoren Tel.: ++41 24 445 66 88
 Capacitors Fax: ++41 24 445 66 89

Le lanché
Capacitors
A FISCHER & TAUSSIG COMPANY

HJJ

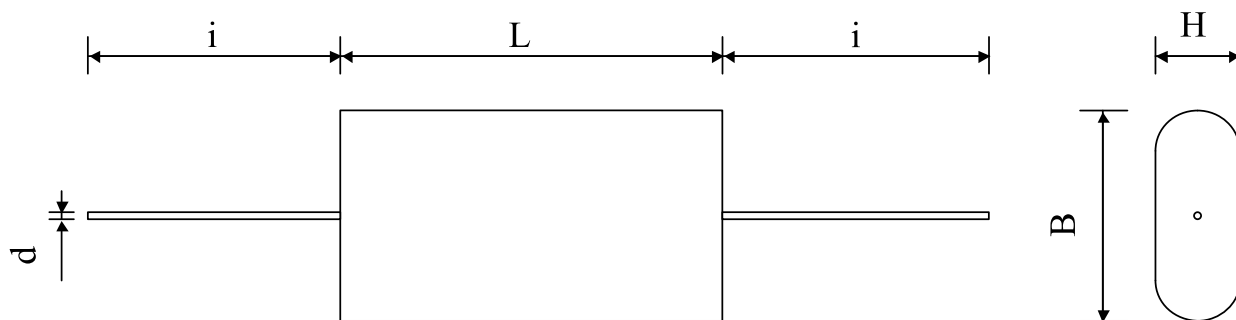
21.05.2008

faisab5724.XLS

#5683

HIGH TEMPERATURE FILM CAPACITORS

MKS 63-2.2 df K



Dielectric of metallized polyphenylene sulfide

Polyester wrapped, Flammibility UL 510 / Epoxy resin sealing UL 94-V0

Parameter	Symbol		Value	Unit	Condition
Capacitance	C		2.2	μF	1 V / 1 kHz
Tolerance			± 10	%	
Rated voltage	U_n DC		630	VDC	
Rated voltage	U_n AC		260	V_{eff}	400 Hz
RMS current	I RMS max.		9	A_{eff}	10 kHz
slope of voltage variation	du/dt max.		100	V/ μsec	max. repetitive
Repetitive surge current	I cr. max		220	A	
Tangente delta	$\text{tg}\delta$		≤ 6	10^{-4}	1 V / 1 kHz
Tangente delta	$\text{tg}\delta$		≤ 18	10^{-4}	1 V / 10 kHz
Stray inductance	ESL		≤ 50	nH	
Insulation resistance	R_i		> 4500	$M\Omega$	100 VDC - 1 min
Test voltage between terminals	U T1		1010	VDC	10 s
Operating temperature			- 55 ... + 125	$^{\circ}\text{C}$	
Dimension	Symbol			Unit	Conditions
Width	B max		36	mm	
Height	H max		24	mm	
Length	L max		33	mm	
Terminals					
Axial tinned wire	d		$\emptyset 1.0 \times 30$	mm	
	M1				
	M0				
	Modification	Date	Visa émetteur		

Condensateurs CH 1401 Yverdon-les-Bains
 Kondensatoren Tel.: ++41 24 445 66 88
 Capacitors Fax: ++41 24 445 66 89

Le Janché
Capacitors
A FISCHER & TALESCHE COMPANY

HJJ

13.08.2007

faisab5683.XLS