

**Application:**

**DC capacitor for general use in power electronics  
also for nonsinusoidal voltages and currents**

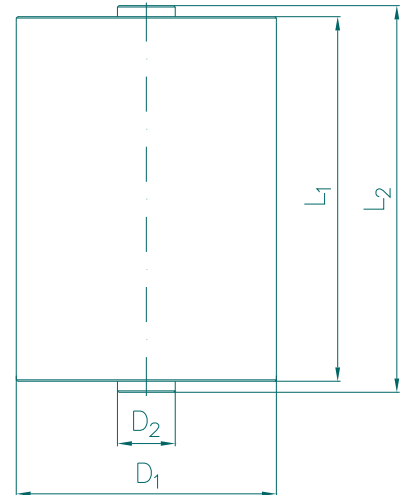
**Standards:**

acc. to IEC 61071:2007

**Characteristics**

Rated capacitance	<b>C<sub>N</sub></b>	1 μF ±10%
Rated d.c. voltage	<b>U<sub>NDC</sub></b>	15000 V
Max. ripple voltage	<b>U<sub>r</sub></b>	3600 V
Non-recurrent surge voltage	<b>u<sub>s</sub></b>	22500 V
Rated energy	<b>W<sub>N</sub></b>	112.5 Ws
Maximum current	<b>I<sub>max</sub></b>	15 A
Maximum peak current	<b>I<sup>^</sup></b>	0.49 kA
Maximum surge current	<b>I<sub>s</sub></b>	1.47 kA
Series resistance	<b>R<sub>s</sub></b>	15.1 mΩ
Tangent of the loss angle	<b>tanδ<sub>o</sub></b>	2 x 10 <sup>-4</sup>
Self discharge time const.	<b>C x R<sub>is</sub></b>	10000 s
Self-inductance	<b>L<sub>e</sub></b>	100 nH

**outline drawing**



**Thermal conditions**

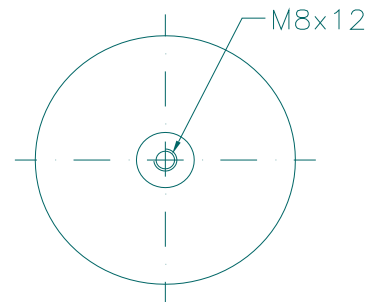
Lowest operating temperature	<b>Θ<sub>min</sub></b>	-25 °C
Maximum operating temperature	<b>Θ<sub>max</sub></b>	70 °C
Thermal resistance	<b>R<sub>th</sub></b>	4.1 kW
Storage temperature	<b>Θ<sub>storage</sub></b>	-40..+85 °C

**Test data**

Voltage test between terminals	<b>U<sub>BB</sub></b>	22500 V DC/10s
--------------------------------	-----------------------	----------------

**failure rate**

reference service life at Θ <sub>hotspot</sub>		50 FIT 100000 h ≤ 70 °C
--	--	-------------------------------



**Dimensions**

Rated diameter	<b>D<sub>1</sub></b>	64 (±1) mm
Diameter of terminals	<b>D<sub>2</sub></b>	20 (±0.5) mm
Length of the case	<b>L<sub>1</sub></b>	285 (±2) mm
Total length	<b>L<sub>2</sub></b>	293 (±2) mm
Terminal		M8x12 mm
Clearance in air	<b>L</b>	329 mm
Creepage distance	<b>K</b>	329 mm

**Approx weight**

<b>m</b>	ca.	1 kg
----------	-----	------

**Mechanical characteristics**

Construction	MKP- metallized polypropylene capacitor, self-healing, plastic case
Fuse	without internal fuse, to be used only in uncritical environment
Terminals	Screw terminals
Impregnant	no liquid impregnants, filled with solidified PUR resin, non PCB
Fire load	38MJ

**Maximum permissible voltage**

(Maximum within one day)

30% of on-load duration	16500V
30min	17250V
5min	18000V
1min	19500V
100ms	22500V