

IAM RoadSmart



Derby Group

AdvancedMotoristsDerby.co.uk





Skill with Responsibility

What you can expect from us



- Supportive and honest comments
- Help to improve your standard of driving
- Advice to enable you to reach the IAM test standard

Remember:

Observers do NOT teach



What we expect of you



- PRACTICE between sessions – essential
- Tell Observer if you have any concerns
- Study Advanced Driving manual and the Highway Code



A typical day on our roads...



Sales Rep

41% - Late for meeting

33% - On phone

26% - Thinking of other

Unlicensed Driver

24% - No driver training

54% - No Insurance

22% - Bad Attitude

Distracted Parent

28% - Rushing to work

33% - Kids playing up

39% - Late for School



Unfit Driver

37% - Poor eyesight

27% - No test taken

36% - Panicking

New Driver

42% - More traffic than usual

25% - Indecisive

33% - Panic

The Fiddler

17% - Eating food

44% - On Phone

13% - Changing CD

26% - Admiring reflection

The Principles of Advanced Driving

1. Concentrate and avoid distractions

2. Read the roads and anticipate hazards

What can be seen?



What cannot be seen?



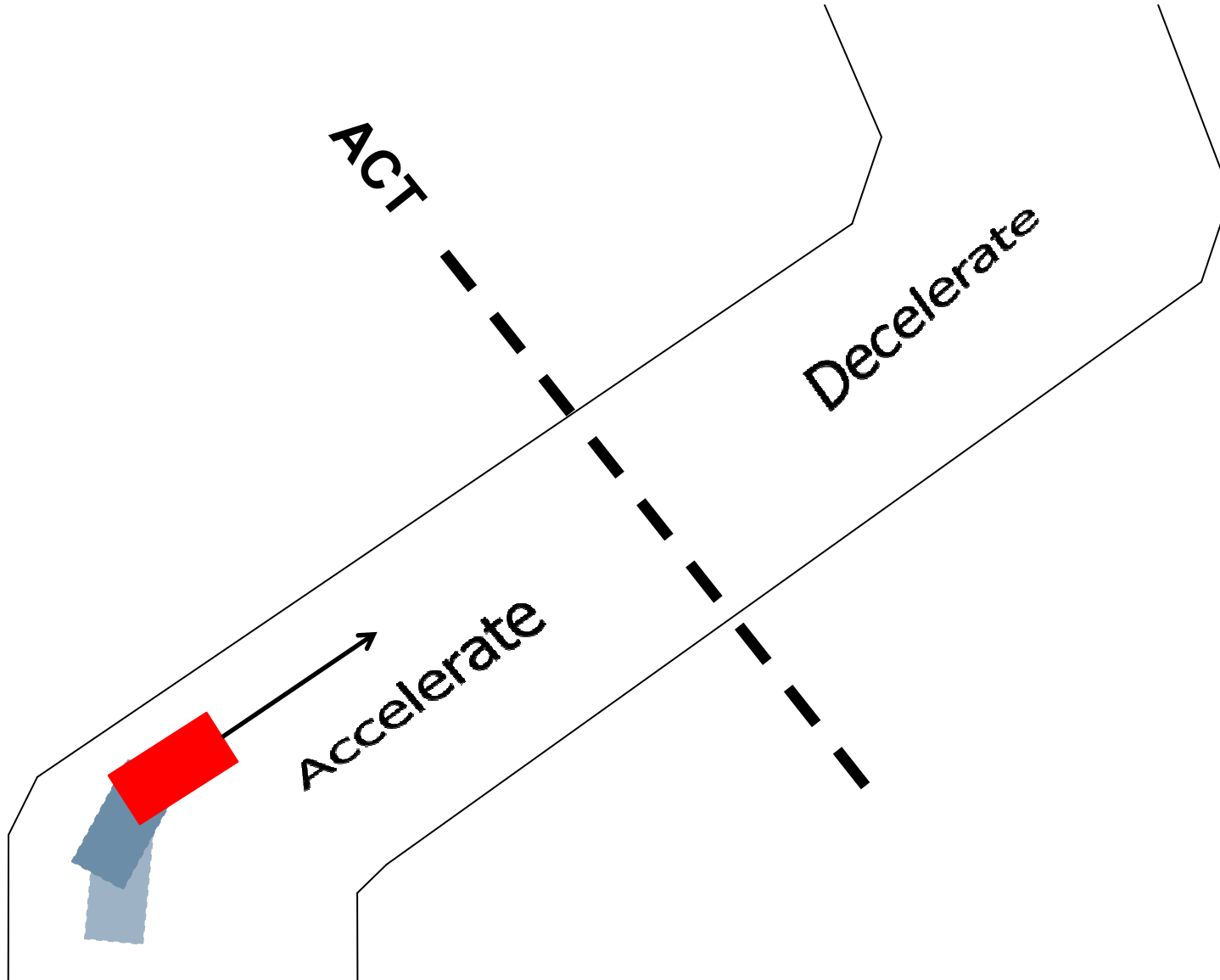
What might reasonably be expected to happen?



Key principles to remember



1. Concentrate and avoid distractions
2. Read the road and anticipate hazards
3. Anticipate how they may affect you
4. Drive in a planned and systematic way
5. Use mirrors and all-round observation
6. Signal only when appropriate
7. Drive with restraint but not indecision
7. Steer the vehicle safely and effectively
8. Brake smoothly and progressively
9. Change gear at the right time and speed
10. Use acceleration sense
11. Use controls with finesse and sensitivity





**Are you a Considerate, Thinking
and Skilful Driver?**

The Advanced System of Car Control

INFORMATION

INFORMATION

POSITION

INFORMATION

POSITION

SPEED

INFORMATION

POSITION

SPEED

GEAR

INFORMATION

POSITION

SPEED

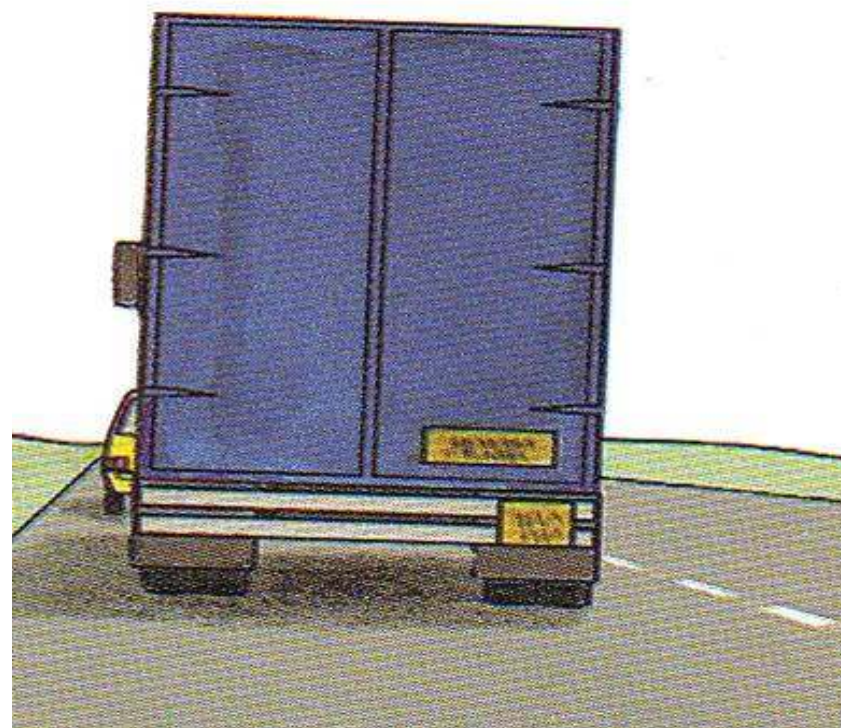
GEAR

ACCELERATION

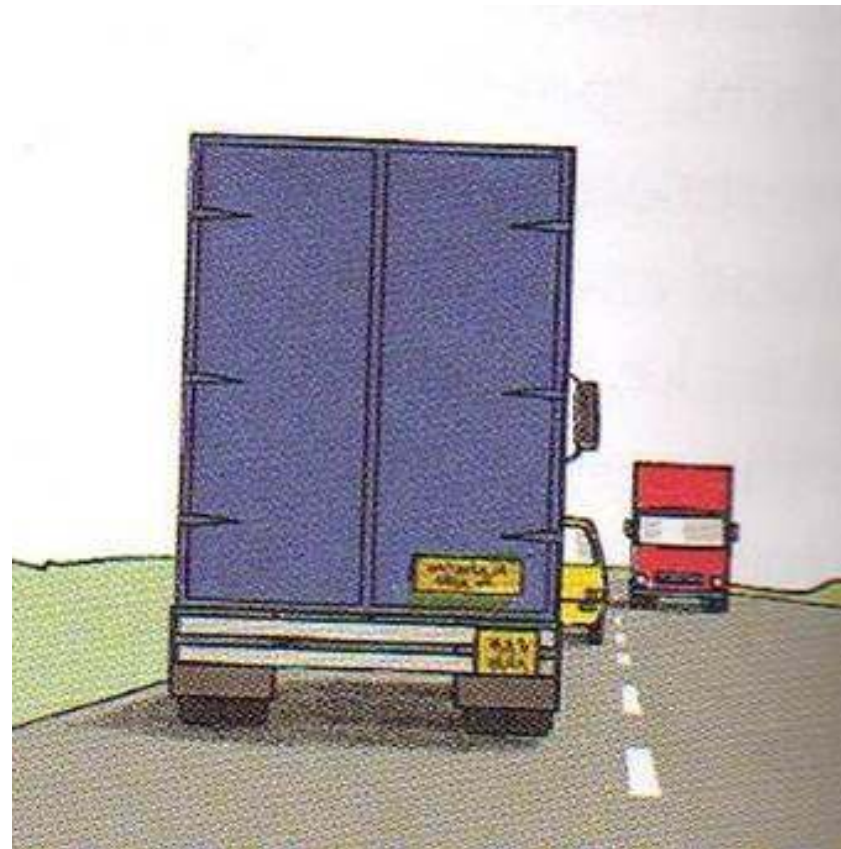
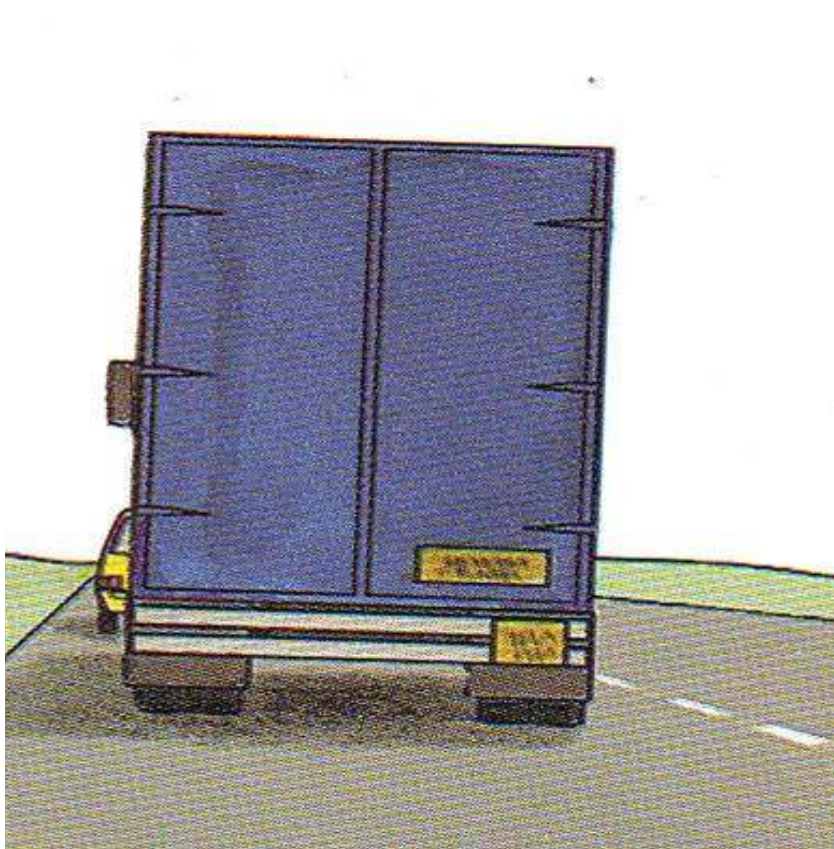
IPSGA in Action



What could be happening?



IPSGA in Action



Be able to **STOP**
in the distance
you can see to be **CLEAR**
on your side of the road

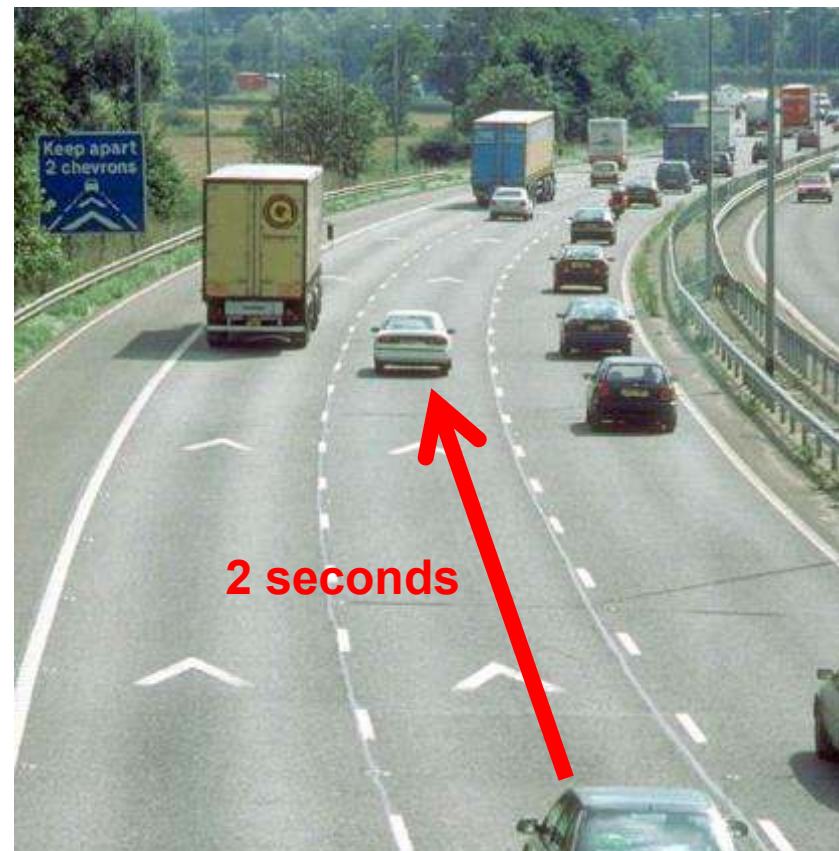


Obey the 2-second rule

Obey the 2-second rule



e.g. 2 chevrons apart on a motorway



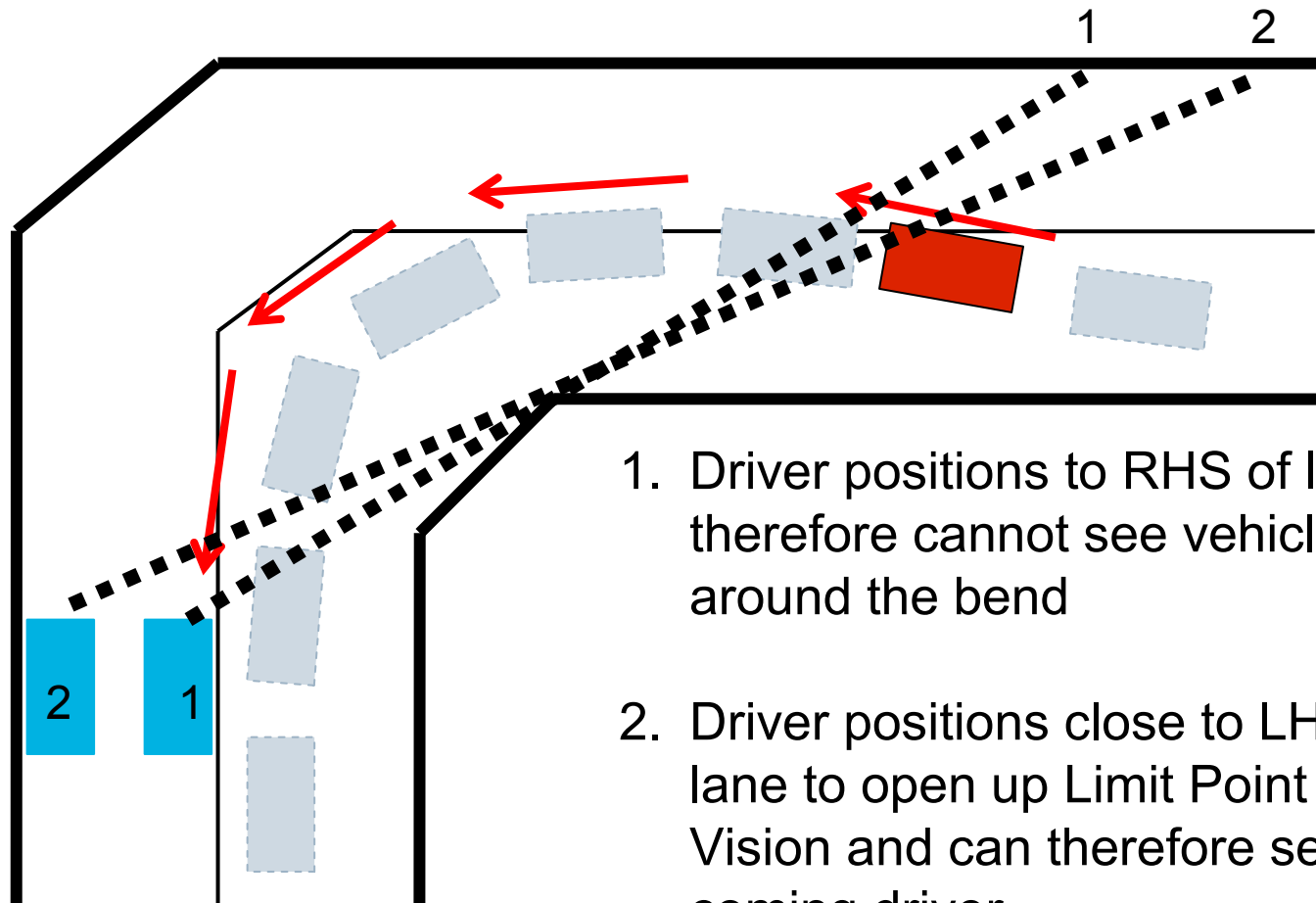
Safe Stopping Distance



“Tyres & Tarmac”

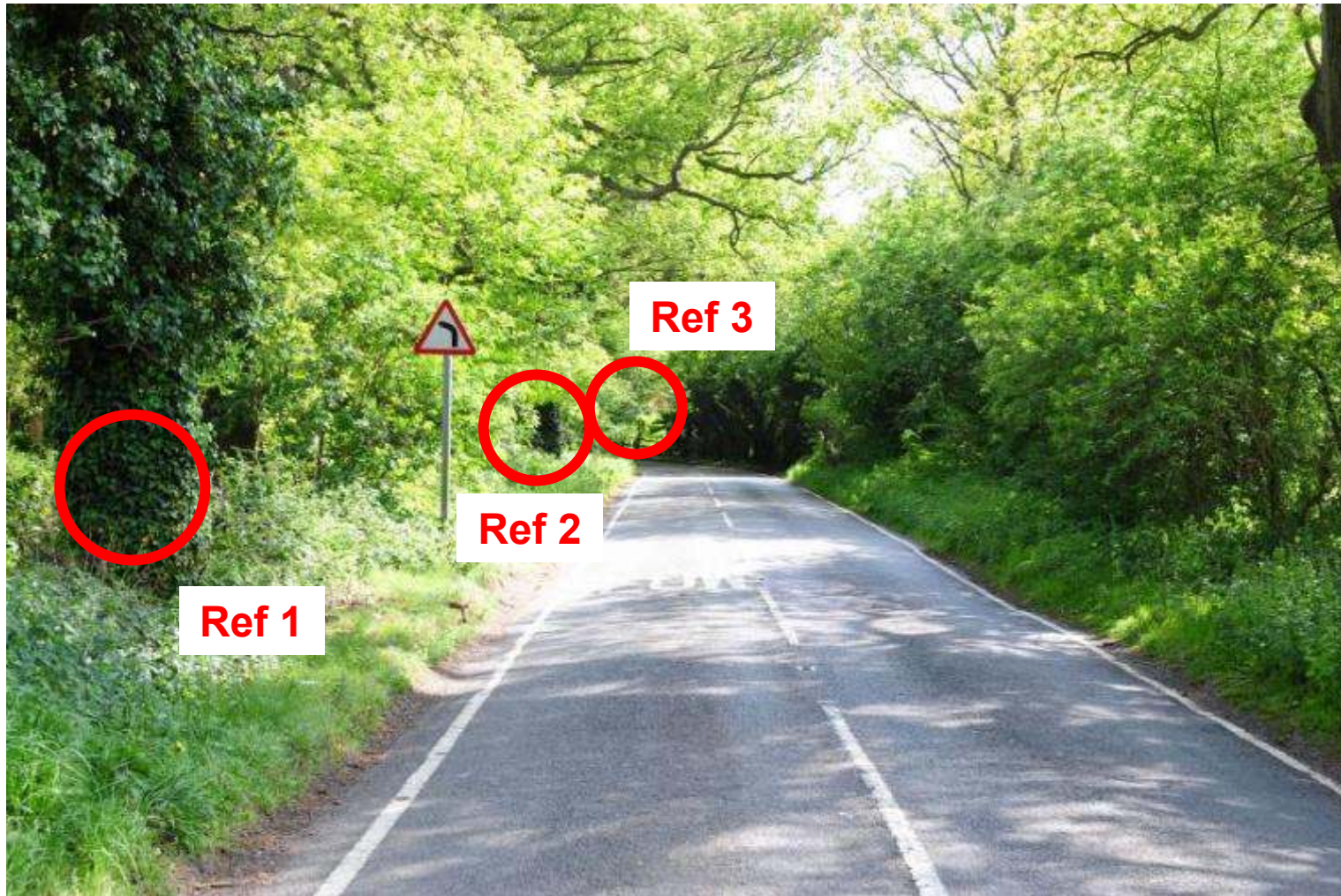


The Limit Point of Vision



1. Driver positions to RHS of lane and therefore cannot see vehicle around the bend
2. Driver positions close to LHS of lane to open up Limit Point of Vision and can therefore see on-coming driver

Limit Points















Pre-Driving Check



- P** Petrol
- O** Oil
- W** Water
- D** Defects
- E** Electrics
- R** Rubber



Pre-Driving Check



- Doors, seat and seat belts
- Headrests
- Mirrors
- Handbrake
- Gear in neutral
- Static/moving brake test
- Switch on ignition – check lights
- Dip clutch and start engine
- Check instruments



Manoeuvres



You will be required to perform an unspecified manoeuvre during your test.

This could be:

- Reversing around a corner
- Parallel Parking; or
- Turn car round in road (3-point turn)



Commentary



- Aids concentration, observation and planning
(Not a formal part of the test)
- Mention anything and everything which is relevant:

Road conditions	Road markings
Other vehicles	Pedestrians/cyclists
Animals	Traffic signs/signals
Weather conditions	Road entrances/exits

- Always ask yourself the question:

How will it affect my driving?

Come and drive with us



Derby Group
AdvancedMotoristsDerby.co.uk

IAM RoadSmart

www.iamroadsmart.com

@IAMRoadSmart

@DriveforWork