



# IndiTreat<sup>®</sup> mCRC Extend

## TARGET PATIENTS

The target for the **IndiTreat<sup>®</sup> mCRC Extend** test is patients with metastatic colorectal cancer showing tumor progression after at least two previous lines of systemic therapy. The aim of drug treatment in these patients is not curative, but palliative, with the intention to extend survival and/or improve quality of life.

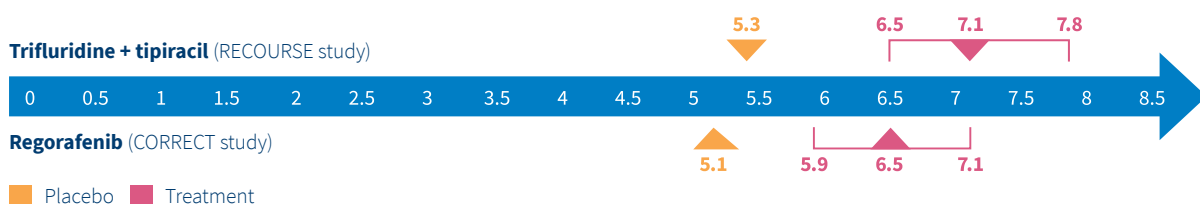
## TREATMENT GUIDELINES

When a patient shows disease progression after having received second line of treatment, the oncologist can “re-challenge” with drugs recommended in first line (**FOLFOX**, **FOLFIRI** and **FOLFOXIRI**) or can treat according to drugs recommended as third line in international guidelines. **ESMO** guidelines recommend two options in third line: The multi-targeted kinase inhibitor **regorafenib** or an oral agent that combines **trifluridine** and **tipiracil**.

## TREATMENT OUTCOME

The treatment outcome for **regorafenib** is modest with an Overall Survival of 6,5 months compared to 5.1 months in the placebo arm (CORRECT study), while for **trifluridine + tipiracil** it is 7.1 months compared to 5.3 months in the placebo arm (RECOURSE study). These outcomes are however median values of the treatment arms, where the response of individual patients will be found within a wide range. The challenge is that there are no biomarkers to predict where in the range a specific patient response will be. Other challenges are that both treatments have considerable adverse effects and are costly.

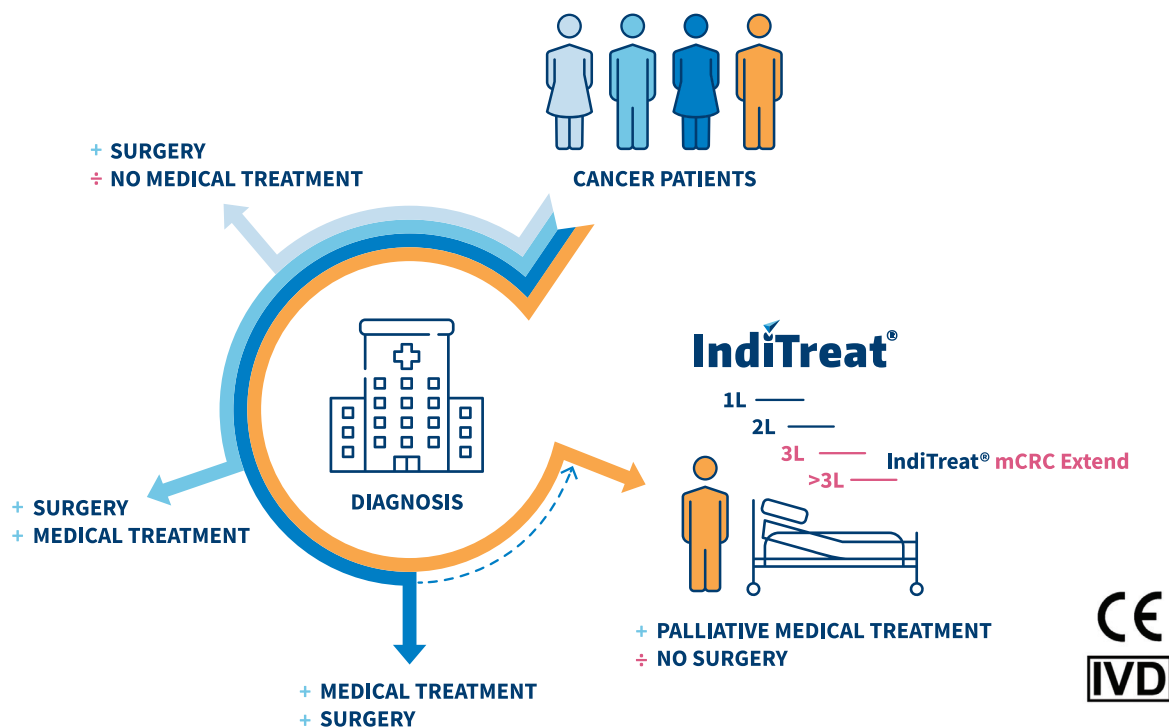
## OVERALL SURVIVAL (MONTHS FROM RANDOMIZATION TO DEATH)



## VALUE OF GUIDED TREATMENT

The unique value of the **IndiTreat®** test is that the individual patient response is predicted based on tumoroids created from the patient's own tumor cells. This is important for clinical practice, as patients not likely to respond to treatment can be spared a therapy with troublesome adverse effects. Conversely, patients likely to respond can benefit from a longer Overall Survival than the average one reported in clinical trials.

IndiTreat® mCRC Extend – DRUG PANEL	
Ordering Code: 2CX-01-CRC-01	
FOLFOX	Regorafenib
FOLFIRI	Trifluridine + tipiracil
FOLFOXIRI	



**IndiTreat®**  
by 2cureX

**2cureX**

Fruebjergvej 3  
2100 Copenhagen  
Denmark

Mail: [support@2curex.com](mailto:support@2curex.com)  
[www.inditreat.com](http://www.inditreat.com)