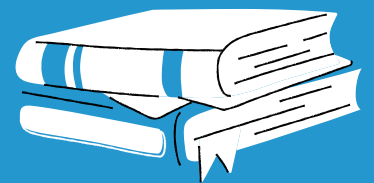



German courses Guidebook

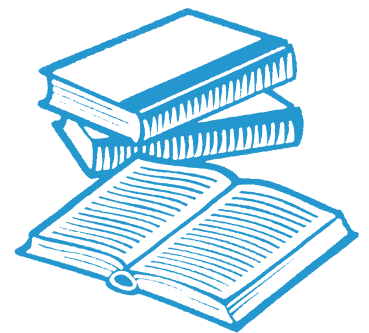


WWW.WTG-ACADEMY.COM

- 
- **WTG Academy offers Intensive German Courses from A1 till C1 based on the Common European Framework of Reference for Languages.**
 - **The courses can be attended online worldwide and in presence in Rüsselsheim.**

MATERIALS

- **Text books:** Begegnungen– Spektrum Deutsch, Erkundungen, we constantly monitor new publications and may employ additional text books that seem appropriate.
- **Hand-outs** like newspaper articles, literature etc. - Multimedia-teaching with online materials...





A1

Intensive German Course



www.wtg-academy.com

The A1 intensive German Course is taught all year around, with different starting dates to fit all student's availabilities and based on the Common European Framework of Reference for Languages.

At the end of each level there is an internal examination that helps the students prove their progress.



INTRODUCTION

A1 COURSE CONTENT

Content

Information about yourself
or others

Activities and hobbies

Geography

Shops/shopping and public
facilities

Daily routines

Transportation and
connections

Food and drink

Grammar

Present verb conjugation

Personal pronoun

Possessive article

Definite and indefinite article

Verbs with vowel change

Propositional sentence,
interrogative sentence,
imperative sentence

Separable verbs / Modal verbs

Accusative / Prepositions

Perfect tense

PRICE LIST

- *A1 German Course: 450 Euros*
- *A1.2: 250 Euros*

Course	Period	Place	Duration	Availability
A1	8 Weeks	Online Rüsselsheim	3 - 4 days per week 4.5 to 5 t.u. a day	Morning and Afternoon
A1.1	4 Weeks	Online Rüsselsheim	3 - 4 days per week 4.5 to 5 t.u. a day	Morning and Afternoon
A1.2	4 Weeks	Online Rüsselsheim	3 - 4 days per week 4.5 to 5 t.u. a day	Morning and Afternoon

AFTER TAKING THE A1 COURSE

- Students will be able to develop a basic knowledge of the German language.
- Understand and use familiar expressions and standard phrases.
- Introduce themselves, express and understand personal details.
- Communicate basic information in a simple and clear way.
- Students finish courses with a WTG certificate (teilnahmebestätigung), documenting course level and course duration.





A2

Intensive German Course



www.wtg-academy.com

The A2 Intensive German course takes place 6 times a year in a two-month rhythm to be taught throughout the year, with different starting dates to fit all student's availabilities and based on the Common European Framework of Reference for Languages.

At the end of each level there is an internal examination that helps the students prove their progress.



INTRODUCTION

A2 COURSE CONTENT

Content

Work and leisure

German cities (location, size, sights, orientation)

Clothing

City and country life

Furniture and fixtures

Orientation in buildings

Quantities and dimensions

Different cultures

Grammar

Perfect: separable, inseparable verbs

Alternate prepositions

Verbs with dative

Comparative, superlative

Prepositions with dative case

Modal verbs in the past tense

Separable verbs / Modal verbs

Subordinate clauses: that, because, if, although

Adjective declension

PRICE LIST

- *A2: 500 Euros*
- *A2.2: 275 Euros*

Course	Period	Place	Duration	Availability
A2	8 Weeks	Online Rüsselsheim	3 - 4 days per week 4.5 to 5 t.u. a day	Morning and Afternoon
A2	4 Weeks	Online Rüsselsheim	3 - 4 days per week 4.5 to 5 t.u. a day	Morning and Afternoon
A2	4 Weeks	Online Rüsselsheim	3 - 4 days per week 4.5 to 5 t.u. a day	Morning and Afternoon

AFTER TAKING THE A2 COURSE

- Level A2 is the keystone in learning German.
- At this level, the student learns most of the German grammar, which enables him to form sentences correctly in the future.
- The student will also be able to communicate simple and routine tasks.
- Moreover, he/she will understand sentences and will recognize the frequently used expressions.





B1

Intensive German Course



www.wtg-academy.com



INTRODUCTION

The B1 Intensive German course will take place 6 times a year in a two-month rhythm to be taught throughout the year, with different starting dates to fit all student's availabilities and based on the Common European Framework of Reference for Languages.

At the end of each level there is an internal examination that helps the students prove their progress.

B1 COURSE CONTENT

CONTENT

- Houses and apartments
- Living styles
- Famous personalities
- Travel and hotels
- Weather
- Relationships
- Parties and invitations
- Eerie/Fantastic
- Diseases

GRAMMAR

- Past tense
- past perfect
- temporal subordinate clauses: as, if, after
- final clauses
- Conjunctive II (would + infinitive)
- personal pronouns in the accusative
- locative and directional clauses
- reflexive verbs
- Reflexive pronouns in the dative and accusative case
- Relative pronouns in the dative and accusative case
- future tense I
- Passive
- Verbs with fixed prepositions

PRICE LIST

- B1 German: 550 Euros
- B1.2 German: 300 Euros

Course	Period	Place	Duration	Availability
B1	8 Weeks	Online Rüsselsheim	3 - 4 days per week 4.5 to 5 t.u. a day	Morning and Afternoon
B1.1	4 Weeks	Online Rüsselsheim	3 - 4 days per week 4.5 to 5 t.u. a day	Morning and Afternoon
B1.2	4 Weeks	Online Rüsselsheim	3 - 4 days per week 4.5 to 5 t.u. a day	Morning and Afternoon





AFTER TAKING THE B1 COURSE

- Level B1 enables the students to understand all the important content when using a standard language, talk about experiences and interests and easily communicate on familiar topics.
- The students are also able to describe dreams, hopes, and events. Moreover, he/she can give brief explanations of plans.
- Students finish courses with a WTG certificate (teilnahmebestätigung), documenting course level and course duration.



B2

Intensive German Course



www.wtg-academy.com



INTRODUCTION

The B2 Intensive German course takes place 4 times a year in a three-month rhythm to be taught throughout the year, with different starting dates to fit all student's availabilities and based on the Common European Framework of Reference for Languages.

At the end of each level there is an internal examination that helps the students prove their progress.

B2 COURSE CONTENT

CONTENT

- Wishes and dreams
- Home/life abroad
- Professions
- Conflicts and solutions
- Complaints
- Public spirit instead of egoism
- Media worlds
- Family
- Festivals
- School
- Film, music, sports

GRAMMAR

- Subjunctive
- Subordinate clauses
- Main clauses
- Pronominal
adverbs/interrogative pronouns
- Adjectives in the genitive case
- N-declension
- To + infinitive
- Conditional passive
- Past tense passive, perfect, past
perfect, future perfect and
future Present participle, past
perfect participle.

PRICE LIST

- **B2: 750 Euro**
- **B2.2 & B2.3**
275 Euros each



Course	Period	Place	Duration	Availability
B2	12 Weeks	Online Rüsselsheim	3 - 4 days per week 4.5 to 5 t.u. a day	Morning and Afternoon
B2.1	4 Weeks	Online Rüsselsheim	3 - 4 days per week 4.5 to 5 t.u. a day	Morning and Afternoon
B2.2	4 Weeks	Online Rüsselsheim	3 - 4 days per week 4.5 to 5 t.u. a day	Morning and Afternoon
B2.3	4 Weeks	Online Rüsselsheim	3 - 4 days per week 4.5 to 5 t.u. a day	Morning and Afternoon



AFTER TAKING THE B2 COURSE

- You can express yourself clearly and in detail as well as argue and negotiate successfully.
- At the B2 level, you will have the vocabulary for university majors and for all general subjects. The rules are well mastered.
- Students are able to issue clear and detailed texts on a wide range of topics, explain a point of view on an objective issue and give the advantages and disadvantages of the various options.
- Students finish courses with a WTG certificate (teilnahmebestätigung), documenting course level and course duration.



C1

Intensive German Course



www.wtg-academy.com

The C1 Intensive German course takes place 4 times a year in a three-month rhythm to be taught throughout the year, with different starting dates to fit all student's availabilities and based on the Common European Framework of Reference for Languages. Students are prepared for the Telc c1 or DSH exam at this level.

At the end of each level there is an internal examination that helps the students prove their progress.



INTRODUCTION

C1 COURSE CONTENT

CONTENT

- Discussing cultural experiences
- Environmental Issues
- Business and Economics
- Media and Entertainment
- Scientific and Academic Texts
- Cultural Studies and History
- Literature Analysis
- Creative writing
- Conversations and interviews
- Presentations and speeches

GRAMMAR

- Advanced usage of pronouns
- Advanced usage of prepositions
- Word Order and Sentence Structure
- Prepositions
- Tenses and Aspects
- Complex Sentence Structures
- Pronouns, including relative, reflexive, and demonstrative pronouns
- Direct and indirect speech

PRICE LIST

- **C1: 750 Euro**
- **C1.2 & C1.3**
275 Euros each



Course	Period	Place	Duration	Availability
C1	12 Weeks	Online Rüsselsheim	3 - 4 days per week 4.5 to 5 t.u. a day	Morning and Afternoon
C1.1	4 Weeks	Online Rüsselsheim	3 - 4 days per week 4.5 to 5 t.u. a day	Morning and Afternoon
C1.2	4 Weeks	Online Rüsselsheim	3 - 4 days per week 4.5 to 5 t.u. a day	Morning and Afternoon
C1.3	4 Weeks	Online Rüsselsheim	3 - 4 days per week 4.5 to 5 t.u. a day	Morning and Afternoon



AFTER TAKING THE C1 COURSE

- German C1 course aims to deepen your understanding of the language and culture while honing your written and spoken skills, at an advanced level.
- The topics in C1 are designed to challenge students and help them achieve a high level of proficiency in the German language, enabling them to communicate effectively in both formal and informal contexts.
- Achieving a C1 level in German opens up a wide range of opportunities for further study, work, and cultural immersion in German-speaking countries. It also enhances your resume and may be a requirement for certain academic programs or job positions.

- Introduction phase
- Development phase
- Practice phase
- Application phase

(speaking, reading, guided and free writing)




TEACHING PHASES



- **If there are up to 8 participants, the course takes place 3 times a week.**
- **If there are up to 15 participants, the course takes place 4 times a week.**



 Old Saida Road, Facing Choueifat Mall
Choueifat - Lebanon


 Martstraße 6, 65428 Rüsselsheim am main,
Hessen - Deutschland


 WTG Consulting

 WTG Aademy

 WTG Aademy

 WTG Academy

 +4917624188968
+961 3085710

 +49 61429206001
+961 3085710

Scan to book a course:

