

Content

1 Roof solar mounting system

1.1 Residential roof solar mounting system

1.1.1 Metal roof solar mounting

1.1.2 Tile roof solar mounting

1.1.3 Asphalt shingle roof solar mounting

1.2 Commercial roof solar mounting system

1.2.1 Concrete slab flat roof solar mounting

1.2.2 Metal flat roof solar mounting

2 Ground solar mounting system

2.1 Base type: Pile

2.2 Base type: Concrete block

3 Solar carport mounting system

3.1 Residential solar carport

3.2 Commercial solar carport

3.3 Single column solar carport

4 Adjustable solar mounting system

4.1 Ground adjustable solar mounting

4.2 Roof adjustable solar mounting

4.3 Led solar mounting

5 Solar mounting accessories

5.1 Aluminum mounting rail & splice

5.2 Mid clamp & End clamp

5.3 Grounding parts & MC4

5.4 PV cable & Fence

5.5 Pile

1. Roof solar mounting system

1.1. Residential roof solar mounting system

Number: YK-PM01

1.1.1. Metal roof solar mounting

Aluminum structure with stainless steel accessories.

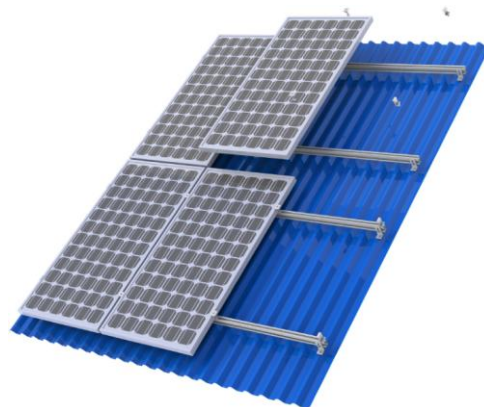
With variety of different tin roof brackets, Yunkai Solar **tin roof mounting system** can meet trapezoid/corrugated metal roof and standing seam roof demand with or without penetrating on the roof. Yunkai Solar has the excellent engineer team and quality management system to provide the perfect service.

Specification:





Wind Speed: < 60m/s Snow load: 1.4 KN/m² Standard: AS1170.2
 Degree: 0° Arrangement: Vertical or Horizontal Warranty: 10 years

Installation Manual:

1. Fix L-feet by tapping screw, ensure waterproof by rubber plate.
2. Installing rail by side of L-feet, L-feet's hole can adjust the height of rail.
3. Two rails supported each panel, fix panels by mid clamp and end clamp kit.



Normal metal roof mounting accessories shown as below:

Rail	L-feet kit	End clamp kit	Mid clamp kit
			

By different section of metal roof, also we can choose other types of brackets:

Trapezoid roof bracket (Normal type):



Part No.	YK-PM02
Material	Stainless steel +Tapping screw+ Socket bolt kit
Finish	N/A
Remark	By short Tapping screw to fix bracket



Corrugated metal roof bracket(Normal type):



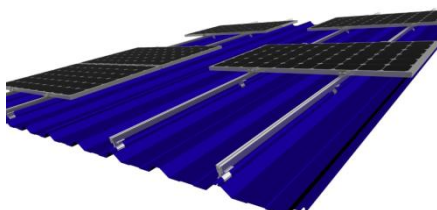
Part No.	YK-PM03
Material	Stainless steel +hanger bolt+ Socket bolt kit
Finish	N/A
Remark	Drilled into purlin of metal roof



Seam Clamp (Normal type):



Part No.	YK-PM04
Material	Aluminum alloy +Socket bolt kit
Finish	N/A
Remark	Seam clamp



1.1.2. Tile roof solar mounting

Number: YK-PT01

Tile roof solar mounting system mainly used for residential roof, and use aluminum alloy rail with stainless steel roof hook to install.

Yunkai Solar has the excellent engineer team and quality management system to provide the perfect service.

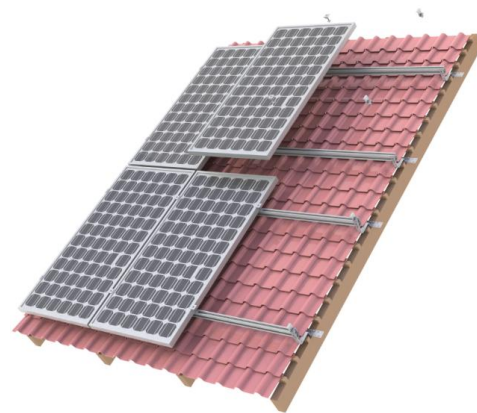
Specification:

Wind Speed: < 60m/s Snow load: 1.4 KN/m² Standard: AS1170.2





Degree: 0° Arrangement: Vertical or Horizontal Warranty: 10 years

Installation manual:

- 1.Installing roof hook by tapping screws;
- 2.Installing rail by side of roof hook, hook's hole can adjust the height of rail.
- 3.Two rails supported each panel, fix panels by mid clamp and end clamp kit.




Normal tile roof mounting accessories shown as below:

Mounting rail	Roof hook kit	End clamp	Mid clamp kit
			


By different section of tile roof, also we can choose other types of brackets:

Roof hook 02 (Normal type):

	Part No.	YK-PT02
	Material	Stainless steel +Tapping screw+ Socket bolt kit
	Finish	N/A
	Remark	The length of tile is long than normal








Roof hook 03 (Normal type):

	Part No.	YK-PT03
	Material	Stainless steel +Tapping screw+Socket bolt kit
	Finish	N/A
	Remark	Used for another type rails



Also we can choose others according to other actual section of tile roof as below:

YK-PT04	YK-PT05	YK-PT06	YK-PT07	YK-PT08
				

1.1.3. Asphalt shingle roof solar mounting

Number: YK-PA01

Use flashing to ensure waterproof

Yunkai Solar provided new type Asphalt shingle roof solar mounting system for our customers.

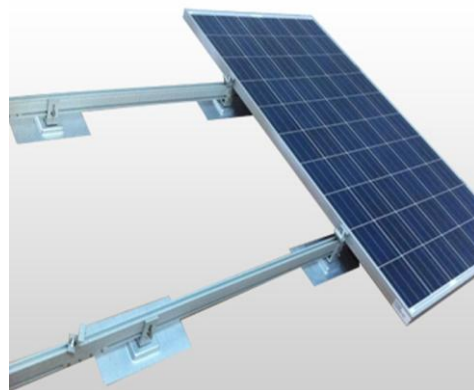
Specification:

Wind Speed: < 60m/s Snow load: 1.4 KN/m2 Standard: AS1170.2

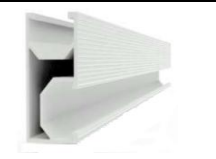



Degree: 0° Arrangement: Vertical or Horizontal Warranty: 10 years

Installation manual:

- 1.Installing flashing kit at first by tapping screws;
- 2.Installing rail by side of L-feet , L-feet's hole can adjust the height of rail.
- 3.Two rails supported each panel, fix panels by mid clamp and end clamp kit.



Asphalt shingle roof mounting accessories shown as bellow:

Mounting rail	Flashing	End clamp	Mid clamp kit
			



Asphalt shingle roof type

Case Shown:



RFQ for all types of pitched roof solar mounting system

For all roof solar mounting inquiry, please let us know necessary information as bellow:

Necessary info. for us to design and quote

- What is your PV panels dimension? ____mm Length x ____mm Width x ____mm Thickness
- How many panel are you going to mount? ____Nos.
- What kind of roof do you have? _____(Tin/metal/tile/slate/shingle roof)
- What is your planned array ? _____(1x4, 1x5, 1x6 etc.)
- How is weather there, such as wind speed and snow load? ____m/s anit-wind speed and ____KN/m2 snow load.

1.2. Commercial roof solar mounting system

1.2.1. Concrete slab flat roof solar mounting

Flat roof with concrete slab installation site

Yunkai Solar usually use concrete block as ballast or concrete foundation to fix solar mounting structure and panels.

Simple triangle solar mounting system (Without lowest side of PV panel height demand)

Number: YK-FC01

Mainly it's triangle structure, by this type, mounting brackets will be very steady, and ensure resist big wind and snow etc.

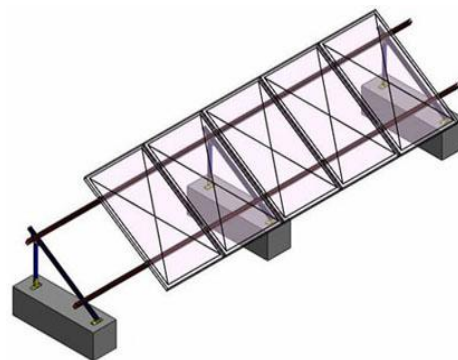
Specification:

Wind Speed: < 42m/s Snow load: 1.4 KN/m² Standard: AS1170.2






Degree: 0°-70 Arrangement: Vertical Warranty: 10 years

Installation Manual:

1. Install front bracket and rear post on concrete block, and then install main beam on the top of post, other terminal connect with front bracket.
2. Install mounting rail upon main beam
3. Install PV panels by mid clamp and end clamps.



Main parts shown as bellow: (if no concrete block, install on roof surface by expansion bolt directly.)

Mounting rail/Main beam	Front bracket/Connection	Rear Post	End clamp	Mid clamp kit
				

By customers' different requirements, also we can provide other types as bellow:

Simple triangle solar mounting system (With lowest side of PV panel height demand)

Number: YK-FC02

Also it's triangle structure, just only we added front post which instead of front bracket.

By this type, mounting brackets will be very steady, and ensure resist big wind and snow etc.

Specification:

Wind Speed: < 42m/s Snow load: 1.4 KN/m² Standard: AS1170.2






Degree: 0°-70 Arrangement: Vertical Warranty: 10 years

Installation Manual:

1. Install front post and rear post on concrete block by hex bolt, and then install main beam on the top of posts by connection parts.
2. Install mounting rail upon main beam
3. Install PV panels by mid clamp and end clamps.



Main parts shown as bellow: (According to the distance between 2 front/rear posts, we need consider to add back support or not)

Mounting rail、Main beam	Connection	Front Post、Rear Post	End clamp kit	Mid clamp kit
				

C-channel structure triangle solar mounting system (No height demand, lowest side of PV panel from GL)

This type solar mounting brackets is very steady and no need to destroy rooftop.

Number: YK-FC03

When installed, use concrete blocks as ballast to fix all solar mounting structure, easy to install and save cost.

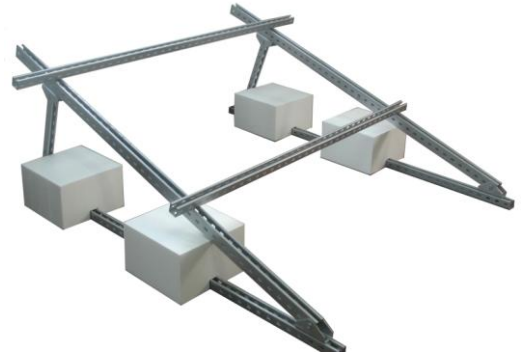
Specification:

Wind Speed: < 42m/s Snow load: 1.4 KN/m² Standard: AS1170.2



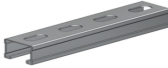


Degree: 0°-70 Arrangement: Vertical Warranty: 10 years

Installation Manual:

- 1.Install front bracket and rear post on ballast beam by connection, and then install main beam on top of post, another end connect with front bracket.
- 2.Install mounting rail upon main beam by hex bolt and square nut.
- 3.Install PV panels by mid clamp and end clamps.



Main parts shown as bellow:

Mounting rail、 Main beam、 Rear Post	Front bracket、 Connection	Down Beam	End clamp	Mid clamp kit
				

C-channel structure triangle solar mounting system (With height demand, lowest side of PV panel from GL)

For this type solar mounting structure, we need to install ballast beam with vertical at first, and when all triangle brackets installed completely, we need to install secondary ballast beam again.

Number: YK-FC04

Specification:

Wind Speed: < 42m/s Snow load: 1.4 KN/m² Standard: AS1170.2






Degree: 0°-70 Arrangement: Vertical Warranty: 10 years

Installation Manual:

- 1.Install ballast beam first, and then install front post and rear post on beam, and then install main beam on top of posts.
- 2.Install mounting rail upon main beam by hex bolts and square nuts.
- 3.Install PV panels by mid clamp and end clamps.
4. Install secondary beam with landscape, and then use concrete block as ballast to fix all structure.



Main parts shown as bellow:

Front Post、 Rear Post	Mounting rail、 Main beam	Ballast Beam	End clamp kit	Mid clamp kit
				

Simple aluminum alloy triangle structure solar mounting system

Number: YK-FC05

Mainly this type solar mounting system used for flat roof which area nearby sea.

When installed, use concrete blocks as ballast to fix all solar mounting structure, no need to drill roof surface.

Specification:

Wind Speed: < 42m/s Snow load: 1.4 KN/m² Standard: AS1170.2






Degree: 0°-70 Arrangement: Vertical Warranty: 10 years

Installation Manual:

1. Install triangle mount kit, which include bottom beam, main beam and rear post. All parts connected by bolts group.
2. Install mounting rail upon main beam by L-connection or bolts group directly.
3. Install PV panels by mid clamp and end clamps.



Main parts shown as bellow (Splice used for each 2 rails connected)

Triangle mount kit	Mounting rail	Splice	End clamp kit	Mid clamp kit
				

As bellow, Yunkai Solar provide some other types of flat roof solar mounting system

Two rows with landscape solar mounting system

Number: YK-FC06

Specification:

Wind Speed: < 42m/s Snow load: 1.4 KN/m² Standard: AS1170.2






Degree: 10°-70 Arrangement: Vertical Warranty: 10 years

Installation Manual:

1. Install ballast beam, and then install front bracket and rear post on this beam, and then install main beam on top of post, another end connect front bracket.
2. Install mounting rail upon main beam, and then install secondary ballast beam on last ballast beams. 3. Install PV panels by mid clamp and end clamps.



Main parts shown as bellow:

Main beam、Rear Post	Front bracket、Connection	Ballast beam	End clamp kit	Mid clamp kit
				

Some area with big wind, Yunkai Solar will provide one solution as bellow:

One row with landscape solar mounting system- ballast type

By this type, make all mounting structure steady and avoid big wind speed.

Number: YK-FC07

Specification:






Wind Speed: < 42m/s Snow load: 1.4 KN/m2 Standard: AS1170.2
 Degree: 0°-70 Arrangement: Horizontal Warranty: 10 years

Installation Manual:

- 1.Install bottom beam first, and then install front bracket and rear post on beam;
- 2.Install ballast beam upon bottom beam, and then use block as ballast
- 3.And then install PV panels on top of rear post and front bracket directly. Install windshield back of PV panels finally. (Here no need to use mounting rail)



Main parts shown as bellow:

Ballast beam、Bottom Beam、Rear Post	Front bracket	Deflector	Connection part	End clamp/Mid clamp kit
				

1.2.2. Metal flat roof solar mounting

Steel structure metal roof solar mounting system

This type used for big power station, and the load of rooftop is very strong. Save cost and easy to install

Number: YK-FM01

Specification:

Wind Speed: < 60m/s Snow load: 1.4 KN/m2 Standard: AS1170.2
 Degree: 0° Arrangement: Vertical or Horizontal Warranty: 10 years






Installation Manual:

- 1.Fix L-feet by tapping screw, ensure waterproof.
- 2.Installing rail by side of L-feet, L-feet's hole can adjust the height of rail.
- 3.Two rails supported each panel, fix panels by mid clamp and end clamp kit.

Notice, here we can use L feet or seam clamp, etc. By actual factors.



Main parts shown as bellow:

Mounting rail	L-FEET (Refer)	Seam clamp (Refer)	End clamp kit	Mid clamp kit
				

Aluminum alloy solar mounting system with triangle structure on metal Roof

Mainly used for South America area, Australia, and so on, for this structure, easy to install and save labor cost.

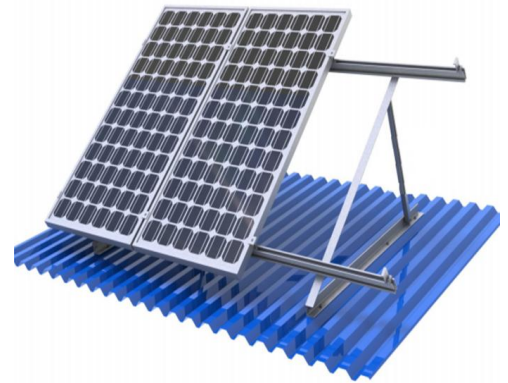
Number: YK-FM02

Specification:


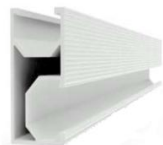



Wind Speed: < 42m/s Snow load: 1.4 KN/m2 Standard: AS1170.2
 Degree: 10°-70 Arrangement: Vertical or Horizontal Warranty: 10 years

Installation Manual:

- 1.Install triangle bracket at first, here triangle bracket contains bottom L-profile, rear post and main beam.
- 2.Install mounting rail upon main beam, 2 rails per row
- 3.Install PV panels by mid clamp and end clamps.



Main parts shown as below:

Triangle bracket profile	Mounting rail	Rail splice	End clamp kit	Mid clamp kit
				

2 Ground solar mounting system

2.1 Base type: Pile

Ground screw solar mounting system is one normal type solar mounting system, used for ground open field.

Ground screw 1 row with portrait solar mounting system

Number: YK-GP01

Specification:






Wind Speed: < 42m/s Snow load: 1.4 KN/m2 Standard: AS1170.2
 Degree: 0°-70 Arrangement: Vertical Warranty: 10 years

Installation Manual:

- 1.Install Pile first, and then install column upon pile. And then install main beam and diagonal brace on this column.
- 2.Install mounting rail upon main beam
- 3.Install PV panels by mid clamp and end clamps.



Ground screw 1 row with vertical solar mounting system

Mounting rail、Main beam、 Diagonal brace、Back support	Ground screw	Single Post	End clamp kit	Mid clamp kit
				

Two rows panels with vertical, this is normal type solar mounting system for ground.

Ground screw 2 rows panels with vertical solar mounting system

Number: YK-GP02

Specification:

Wind Speed: < 42m/s Snow load: 1.4 KN/m2 Standard: AS1170.2

Degree: 0°-70 Arrangement: Vertical Warranty: 10 years

Installation Manual:

- 1.Install Piles first, and then install column upon pile. And then install main beam and diagonal brace. Diagonal brace from rear post to main beam.
- 2.Install mounting rail upon main beam
- 3.Install PV panels by mid clamp and end clamps.



Main parts shown as bellow:

Mounting rail、 Main beam、 Diagonal brace、 Back support	Ground screw	Front、 Rear Post	End clamp kit	Mid clamp kit

Ground screw 3 rows with landscape solar mounting system

According to actual factors and requirements, sometimes 3 panels with landscape type will be used.

Number: YK-GP03

Specification:

Wind Speed: < 42m/s Snow load: 1.4 KN/m2 Standard: AS1170.2

Degree: 0°-70 Arrangement: Horizontal Warranty: 10 years

Installation Manual:

- 1.Install Piles first, and then install column upon pile. And then install main beam(horizontal) and back support on 2 rear columns. Here Diagonal brace will be connected from rear post to front post.
- 2.Install mounting rail upon main beam.
- 3.Install PV panels by mid clamp and end clamps.



Main parts shown as bellow:

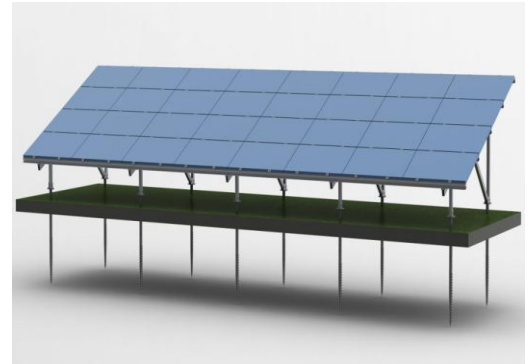
Main beam	Ground screw	Front and Rear Post	Mounting rail	Mid clamp kit、 End clamp

Ground screw 4 rows with landscape solar mounting system

Number: YK-GP04

This 4 panels with landscape will be used usually on open filed and big power station.

Specification:
 Wind Speed: < 42m/s Snow load: 1.4 KN/m2 Standard: AS1170.2
 Degree: 0°-70 Arrangement: Horizontal Warranty: 10 years
 Installation Manual:
 1.Install Piles first, and then install posts upon pile. Install main beam and diagonal brace. Here Diagonal brace will be connected from rear post to main beam.
 2.Install mounting rail upon main beam, here notice there are 5 mounting rails.
 3.Install PV panels by mid clamp and end clamps.



Main parts shown as below:

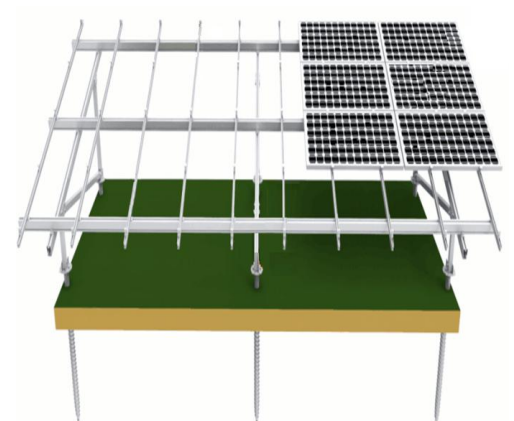
Main beam、Mounting rail	Ground screw	Front、Rear Post	Connection	Mid clamp and end clamp

Ground screw 4-5 rows with vertical solar mounting system

Number: YK-GP05

Yunkai Solar also provide aluminum alloy structure 4-5 rows of panels with landscape array.

Specification:
 Wind Speed: < 42m/s Snow load: 1.4 KN/m2 Standard: AS1170.2
 Degree: 0°-70 Arrangement: Horizontal Warranty: 10 years
 Installation Manual:
 1.Install Piles first, and then install column upon pile. And then install main beam, and then install secondary beam with landscape.
 2.Install mounting rail upon secondary beam.
 3.Install PV panels by mid clamp and end clamps.



Main parts shown as below:

Main beam、secondary beam	Ground screw	Front、Rear Post	Base bracket	Mid clamp kit、End clamp

E-pile solar mounting system with 2 rows

Number: YK-GP06

This type of solar mounting system usually used for Europe market big power station. Easy to install and save labor cost.

Specification:

Wind Speed: < 42m/s Snow load: 1.4 KN/m2 Standard: AS1170.2

Degree: 0°-70 Arrangement: Vertical Warranty: 10 years

Installation Manual:

- 1.Install Pile first, And then install main beam and diagonal brace on this column.
- 2.Install mounting rail upon main beam
- 3.Install PV panels by mid clamp and end clamps.
- 4.Here for pile, we can use “Σ” or “几” type



Main parts shown as bellow:

Mounting rail	Pile (“Σ” “几”)	Main beam、Post	Connection	Mid clamp kit、End clamp

Concrete pile solar mounting system

Number: YK-GP07

This type solar mounting system mainly use for some area which is hard to use normal pile or concrete foundation as base.

Also its structure usually used for lake or low-lever ground area.

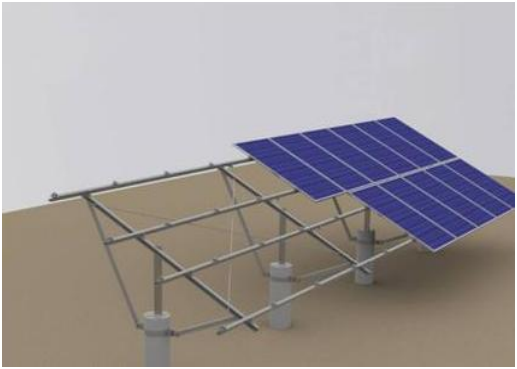
Specification:

Wind Speed: < 42m/s Snow load: 1.4 KN/m2 Standard: AS1170.2

Degree: 0°-70 Arrangement: Vertical Warranty: 10 years

Installation Manual:

- 1.Install Concrete and Pile first, make concrete pile and take steel pile in it. and then install column upon pile. And then install main beam and diagonal braces on this column. 2.Install mounting rail upon main beam
- 3.Install PV panels by mid clamp and end clamps.



Main parts shown as bellow:

Mounting rail	Concrete and pile	Main beam、Post	Diagonal brace	Mid clamp kit、End clamp

2.2 Base type: Concrete block

Most of power station use concrete block as concrete foundation to fix solar panels

Concrete foundation 1 row of panel with vertical solar mounting system

Aluminum structure, mainly used for some area nearby sea. It's very easy to install, strong structure, and save labor cost.

Number: YK-GC01

Specification:

Wind Speed: < 42m/s Snow load: 1.4 KN/m² Standard: AS1170.2


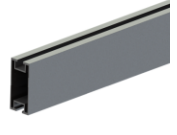

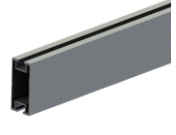

Degree: 0°-70 Arrangement: Portrait Warranty: 10 years

Installation Manual:

1. Install down beam, and then install main beam and rear post on this down beam.
2. Install mounting rail upon main beam
3. Install PV panels by mid clamp and end clamps.



Main parts shown as below:

Mounting rail	Main beam	Down Beam	Rear Post	Mid clamp、End clamp
				

Concrete foundation 2 rows of panels with portrait solar mounting system

Aluminum structure, strong structure, easy to install and save your labor cost, mainly used for ground area which nearby sea.

Number: YK-GC02

Specification:

Wind Speed: < 42m/s Snow load: 1.4 KN/m² Standard: AS1170.2




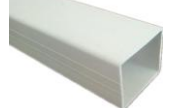

Degree: 0°-70 Arrangement: Vertical Warranty: 10 years

Installation Manual:

1. Install base brackets first, and then install column upon brackets. And then install main beam and diagonal brace on 2 columns.
2. Install mounting rail upon main beam.
3. Install PV panels by mid clamp and end clamps.



Main parts shown as below:

Mounting rail	Main beam	Base bracket	Front、Rear Post、 Diagonal brace	Mid clamp、End clamp
				

Single column 2 rows of panels with portrait solar mounting system

Number: YK-GC03

Aluminum structure, used for some area which low wind speed and nearby sea.

Specification:

Wind Speed: < 42m/s Snow load: 1.4 KN/m2 Standard: AS1170.2

Degree: 0°-70° Arrangement: Vertical Warranty: 10 years

Installation Manual:

- 1.Install base brackets first, and then install post upon brackets. And then install main beam and diagonal brace on single column.
- 2.Install mounting rail upon main beam
- 3.Install PV panels by mid clamp and end clamps.



Main parts shown as bellow:

Single Post	Main beam	Base bracket	Diagonal brace	Mid clamp、End clamp kit

Normally 4 rows of panels with landscape solar mounting system

Number: YK-GC04

Aluminum structure

Specification:

Wind Speed: < 42m/s Snow load: 1.4 KN/m2 Standard: AS1170.2

Degree: 10°-70° Arrangement: Horizontal Warranty: 10 years

Installation Manual:

- 1.Install base brackets first, and then install column upon brackets. And then install main beam on top of columns. And then install diagonal brace from rear post to main beam.
- 2.Install mounting rail upon main beam
- 3.Install PV panels by mid clamp and end clamps.



Main parts shown as bellow:

Front、Rear Post、 Diagonal brace	Main beam	Base bracket	Mounting rail	End clamp、Mid clamp

Concrete foundation 2 rows with vertical solar mounting system

Number: YK-GC05

Steel structure 2 rows of panels with portrait, which is very popular for big power station.

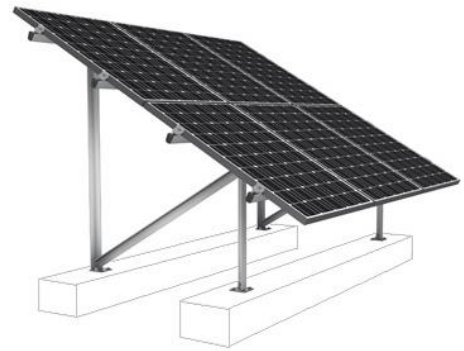
Specification:

Wind Speed: < 42m/s Snow load: 1.4 KN/m² Standard: AS1170.2

Degree: 10°-70 Arrangement: Vertical Warranty: 10 years

Installation Manual:

- 1.Install posts first, and then install main beam and diagonal brace on 2 columns.
- 2.Install mounting rail upon main beam
- 3.Install PV panels by mid clamp and end clamps.



Main parts shown as below:

Mounting rail、 Main beam、 Diagonal brace、 back support	Splice	Front、 Rear Post	Connection	End clamp、 Mid clamp kit

Concrete foundation 3-4 rows of panels with landscape solar mounting system

Number: YK-GC06

Steel structure, and use pole as front post and rear post, main beam. Just only mounting rail will use U-channel steel.

Also it's very popular in Europe market, which build big solar power station.

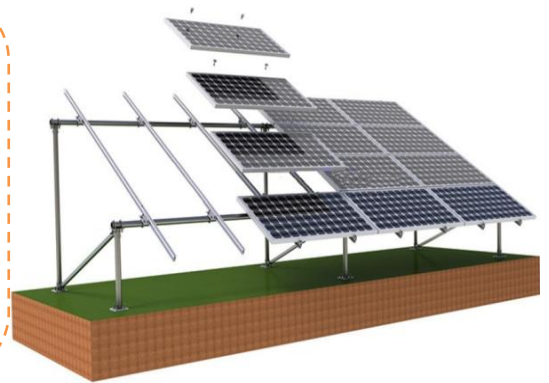
Specification:

Wind Speed: < 42m/s Snow load: 1.4 KN/m² Standard: AS1170.2

Degree: 0°-70 Arrangement: Horizontal Warranty: 10 years

Installation Manual:

- 1.Install posts first, and then install main beam and diagonal brace on 2 columns. Here main beam will be installed from left to right, no from front to rear.
- 2.Install mounting rail upon main beam
- 3.Install PV panels by mid clamp and end clamps.



Main parts shown as below:

Mounting rail	Main beam	Front/Rear Post	Hoop	End clamp、 Mid clamp kit

Single Post steel structure solar mounting system

According to customers' different requirements, also sometimes Yunkai Solar need to provide Single post type solar mounting system.

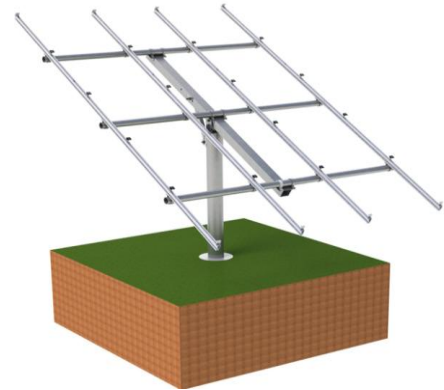
Number: YK-GC06

Specification:

Wind Speed: < 42m/s Snow load: 1.4 KN/m² Standard: AS1170.2
 Degree: 0°-70 Arrangement: Vertical or Horizontal Warranty: 10 years

Installation Manual:

1. Install single post at first, and then install main beam and secondary beam.
2. Install mounting rail upon secondary beam
3. Install PV panels by mid clamp and end clamps on rails.



Main parts shown as bellow::

Mounting rail	Main beam (Welding)	Single Post	Hoop	End clamp、Mid clamp kit

3 Solar carport mounting system

3.1 Residential solar carport

Specification:

Wind Speed: < 42m/s Snow load: 1.4 KN/m² Standard: AS1170.2
 Degree: 10°-70 Arrangement: Vertical or Horizontal Warranty: 10 years

Installation Manual:

Universal steel structure carport solution.

Here, Fix N-bracket kit on concrete foundation, and fix main beam on N-bracket, fix mounting rail upon main beam, fix mounting rail upon main beam, and then fix panels by clamps. Used for 1-2 cars' parking.

Number: YK-CP01



Main parts shown as bellow::

Mounting rail	N-bracket	Base bracket	Main beam	Mid clamp、End clamp kit

Commercial

For commercial solar carport, Yunkai Solar provide one solution which can be parked double side.

Number: YK-CP02

Use "W"-bracket as main structure to fix all solar carport structure, steady and easy to install.

Specification:

Wind Speed: < 42m/s Snow load: 1.4 KN/m² Standard: AS1170.2

Degree: 0°-70 Arrangement: Vertical or Horizontal Warranty: 10 years



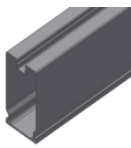


Installation Manual:

Universal aluminum structure carport solution.

Here, Fix W-bracket kit on concrete foundation, and fix main beam on W-bracket, fix mounting rail upon main beam,, fix mounting rail upon main beam, and then fix panels by clamps.



Main parts shown as below:

Mounting rail	W-bracket	Main beam	Base bracket	Mid clamp、End clamp kit
				

3.3 Single column solar carport

For some area which just only allow to build one single column structure solar carport,

Number: YK-CP03

Yunkai solar provide one normal solution, easy to install, steady and save labor cost.

Specification:

Wind Speed: < 42m/s Snow load: 1.4 KN/m² Standard: AS1170.2

Degree: 0°-30 Arrangement: Vertical or Horizontal Warranty: 10 years




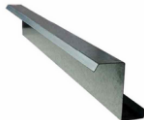

Installation Manual:

Universal steel structure carport solution.

Here, Fix T-bracket kit on concrete foundation, and fix main beam on T-bracket, fix mounting rail upon main beam,, fix mounting rail upon main beam, and then fix panels by clamps.



Main parts shown as below:

Mounting rail	Post Structure	Main beam	Secondary beam	Mid clamp、End clamp kit
				

4.1 Ground adjustable solar mounting

For ground adjustable solar mounting system, Yunkai Solar provide one type with Semi-circle structure.

Number: YK-AD01

Semi-circle structure which is easy to adjust from 0 degree to 60 degree, and 5 degrees adjusted each space.

Specification:

Wind Speed: < 42m/s Snow load: 1.4 KN/m² Standard: AS1170.2

Degree: 0°-70 Arrangement: Vertical or Horizontal Warranty: 10 years

Installation Manual:





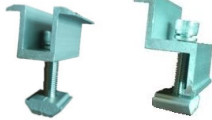
Universal adjustable type solution.

Here, Semi kit: Post, Semi-circle bracket with main beam.

Fix Semi-circle kit on concrete foundation, and fix mounting rail upon main beam, and then fix panels by clamps.



Main parts shown as bellow:

Mounting rail	Post kit	Main beam	Semi-circle	Mid clamp、End clamp kit
				

Adjustable triangle solar mounting system

Here, Yunkai Solar also provide another type with triangle structure to show our customer.

And it's easy to adjust from 0 degree to 60 degree, just only move diagonal brace, we can do adjust easily.

Number: YK-AD02

Specification:

Wind Speed: < 42m/s Snow load: 1.4 KN/m² Standard: AS1170.2

Degree: 0°-70 Arrangement: Vertical or Horizontal Warranty: 10 years






Installation Manual:

Universal adjustable type solution.

1. Install Post structure at first;
2. Install main beam and diagonal brace
3. Install mounting rail and back support



Main parts shown as bellow:

Mounting rail	Post	Main beam	Connection	Mid clamp、End clamp kit
				

Semi-circle triangle structure adjustable solar mounting system

From Semi-circle structure to design, Yunkai Solar also provide one structure which has much more strong than other adjustable structures.

Number: YK-AD03

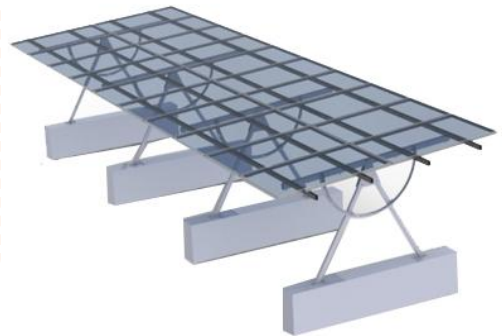
Specification:

Wind Speed: < 42m/s Snow load: 1.4 KN/m² Standard: AS1170.2
 Degree: 0°-70 Arrangement: Vertical or Horizontal Warranty: 10 years






Installation Manual:

Universal adjustable type solution.

Here, Semi kit: 2 Posts, Semi-circle bracket with main beam. Fix Semi-circle kit on concrete foundation, and fix mounting rail upon main beam, and then fix panels by clamps.



Main parts shown as bellow:

Mounting rail	Post	Main beam	Semi-circle	Mid clamp、End clamp
				

4.2 Roof adjustable solar mounting

Roof adjustable solar mounting system, which is popular for Australia and South America market.

Number: YK-ADR01

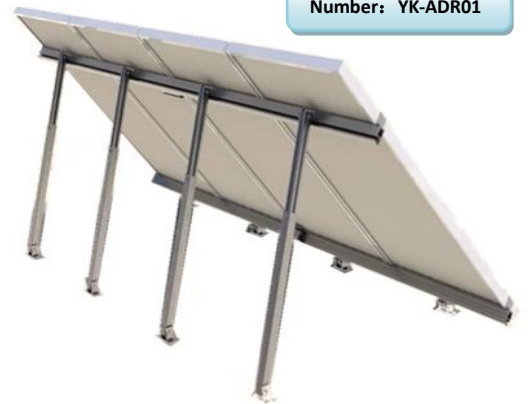
Specification:

Wind Speed: < 42m/s Snow load: 1.4 KN/m² Standard: AS1170.2
 Degree: 0°-70 Arrangement: Vertical Warranty: 10 years






Installation Manual:

Universal adjustable type metal roof solution.

Installing front bracket and rear bracket upon metal roof by tapping screw, fix adjustable rear post kit into bracket, install rail on the top of post for rear row, install rail upon front bracket, install panels by clamps.



Main parts shown as bellow:

Mounting rail	Front bracket	Rear Post	Mid clamp kit	End clamp
				

Flat roof triangle structure adjustable solar mounting system

This type solar mounting system can be adjusted by rear adjustable post.

Steady, and easy to install, save your labor cost.

Number: YK-ADR02

Specification:

Wind Speed: < 42m/s Snow load: 1.4 KN/m2 Standard: AS1170.2

Degree: 0°-70 Arrangement: Vertical Warranty: 10 years

Installation Manual:

Universal adjustable type flat roof solution.

Installing front bracket and rear bracket upon down beam by tapping screw, fix adjustable rear post kit into bracket, install rail on the top of post for rear row, install rail upon front bracket, install panels by clamps.



Main parts shown as bellow:

Mounting rail	Main beam	Rear Post	Down Beam	End clamp

4.3 Led solar mounting

Led solar mounting system, which install easily, save labor cost, and steady.

Number: YK-LED01

Specification:

Wind Speed: < 42m/s Snow load: 1.4 KN/m2 Standard: AS1170.2

Degree: 10°-70 Arrangement: Vertical or Horizontal Warranty: 10 years

Installation Manual:

Universal steel structure solution.

Installing circle brackets kit around the lamp post, and then install triangle brackets on the side of circle brackets, fix panels upon mounting rail by installing holes.







Main parts shown as bellow:



Main beam	Diagonal brace	Hoop	Mounting rail	Bolts group



5 Solar mounting accessories


5.1 Aluminum mounting rail & splice



Mounting rail	Part No.	YKR-01	Attached Splice	List	
	Material	6063-T5 / 6005-T5		Inside Connection	1
	Finish	Anodizing		Outside Connection	1
	Size	28x55mm		Bolts group	2
	Remark			Remark	

Mounting rail	Part No.	YKR-02	Attached Splice	List	
	Material	6063-T5 / 6005-T5		Inside Connection	0
	Finish	Anodizing		Outside Connection	1
	Size	31x38mm		Bolts group	2
	Remark			Remark	

Mounting rail	Part No.	YKR-03	Attached Splice	List	
	Material	6063-T5 / 6005-T5		Inside Connection	1
	Finish	Anodizing		Outside Connection	0
	Size	40x40mm		Hex Bolts group	2
	Remark			Remark	

Mounting rail	Part No.	YKR-04	Attached Splice	List	
	Material	6063-T5 / 6005-T5		InsideConnection	1
	Finish	Anodizing		OutsideConnection	0
	Size	40x40mm		Hex Bolts group	2
	Remark			Remark	

Mounting rail	Part No.	YKR-05	Attached Splice	List	
	Material	6063-T5 / 6005-T5	No need attached Splice	Inside Connection	0
	Finish	Anodizing		Outside Connection	0
	Size	29x40mm		Bolts group	0
	Remark			Remark	

Mounting rail	Part No.	YKR-06	Attached Splice	List	
	Material	6063-T5 / 6005-T5		Inside Connection	1
	Finish	Anodizing		Outside Connection	0
	Size	40x70mm		Tapping screw kit	2
	Remark			Remark	

For mounting rail, roof hook kits and other accessories, also it's accepted to order separately, and we will consider all angles for you, whatever you order whole mounting kits or just only purchase any accessories from us. We're factory, also we can accept OEM according to your requirements.



5.2 Mid clamp & End clamp

	Part No.	YK-MC-01		Part No.	YK-EC-01
	Material	6063-T5 / 6005-T5		Material	6063-T5 / 6005-T5
	Finish	Anodizing		Finish	Anodizing
	Size	mm		Size	mm
Remark			Remark		
Mid clamp kit	Part No.	YK-MC-02	End clamp	Part No.	YK-EC-02
	Material	6063-T5 / 6005-T5		Material	6063-T5 / 6005-T5
	Finish	Anodizing		Finish	Anodizing
	Size	mm		Size	mm
	Remark			Remark	
Adjustable End clamp1	Part No.	YK-EC-03	Adjustable End clamp-2	Part No.	YK-EC-04
	Material	6063-T5 / 6005-T5		Material	6063-T5 / 6005-T5
	Finish	Anodizing		Finish	Anodizing
	Size	mm		Size	mm
	Remark			Remark	
Thin film Mid clamp	Part No.	YK-MC-03	Thin film End clamp	Part No.	YK-EC-05
	Material	6063-T5 / 6005-T5		Material	6063-T5 / 6005-T5
	Finish	Anodizing		Finish	Anodizing
	Size	mm		Size	mm
	Remark			Remark	
Square Nut	Part No.	YK-IS01	Insert Nut	Part No.	YK-IS02
	Material	6063-T5 / 6005-T5		Material	6063-T5 / 6005-T5
	Finish	Anodizing		Finish	Anodizing
	Size	mm		Size	mm
	Remark			Remark	

5.3 Grounding parts & MC4










	Part No.	YK-GLK-01		Part No.	YK-GLK-02
	Material	6063-T5 / SUS304		Material	SUS304
	Finish	Anodizing & N/A		Finish	N/A
	Size	mm		Size	mm
Remark			Remark		
Bonding jumper kit	Part No.	YK-BJK-01	MC4 Kit	Part No.	YK-MC4-01
	Material	6063-T5 / SUS304		Material	铜
	Finish	Anodizing & N/A		Finish	N/A
	Size	mm		Size	mm
	Remark			Remark	

5.4 PV Cable & Fence

PV cable	Part No.	YK-CAB-01	Fence	Part No.	YK-FEN-01
	Material	Cu		Material	Q235b
	Finish	N/A		Finish	N/A
	Size	PV1-F1*4		Size	Customers' demand
	Remark			Remark	

PV solar Cable Tray			Part No.	YK-BRI-01	Introduction
			Material	Steel	Cable Support Systems are designed and manufactured with a structural integrity normally only associated with steel and aluminium, but without their corrosion, weight and electrical conductivity problems.
			Finish	Coating	
			Size	200*50*2000mm	
			Remark		

5.5 Pile

Part No.	YKP-001	YKP-002	YKP-003	YKP-004	YKP-005	YKP-006	YKP-007	YKP-008	YKP-009
Images									
Size	Ground screw we choose according to actual soil factors or customers' requirements.								
Finish	HDG	HDG	HDG	HDG	HDG	HDG	HDG	HDG	HDG
Price									
Remark	Normal size:Φ76*3*1600mm/1800mm/2000mm; Big blades or small blades; With flange or without flange.								