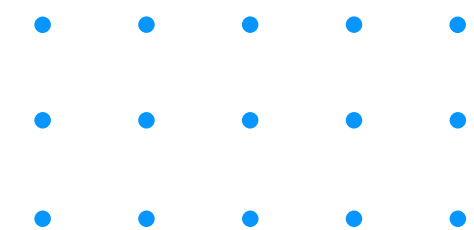
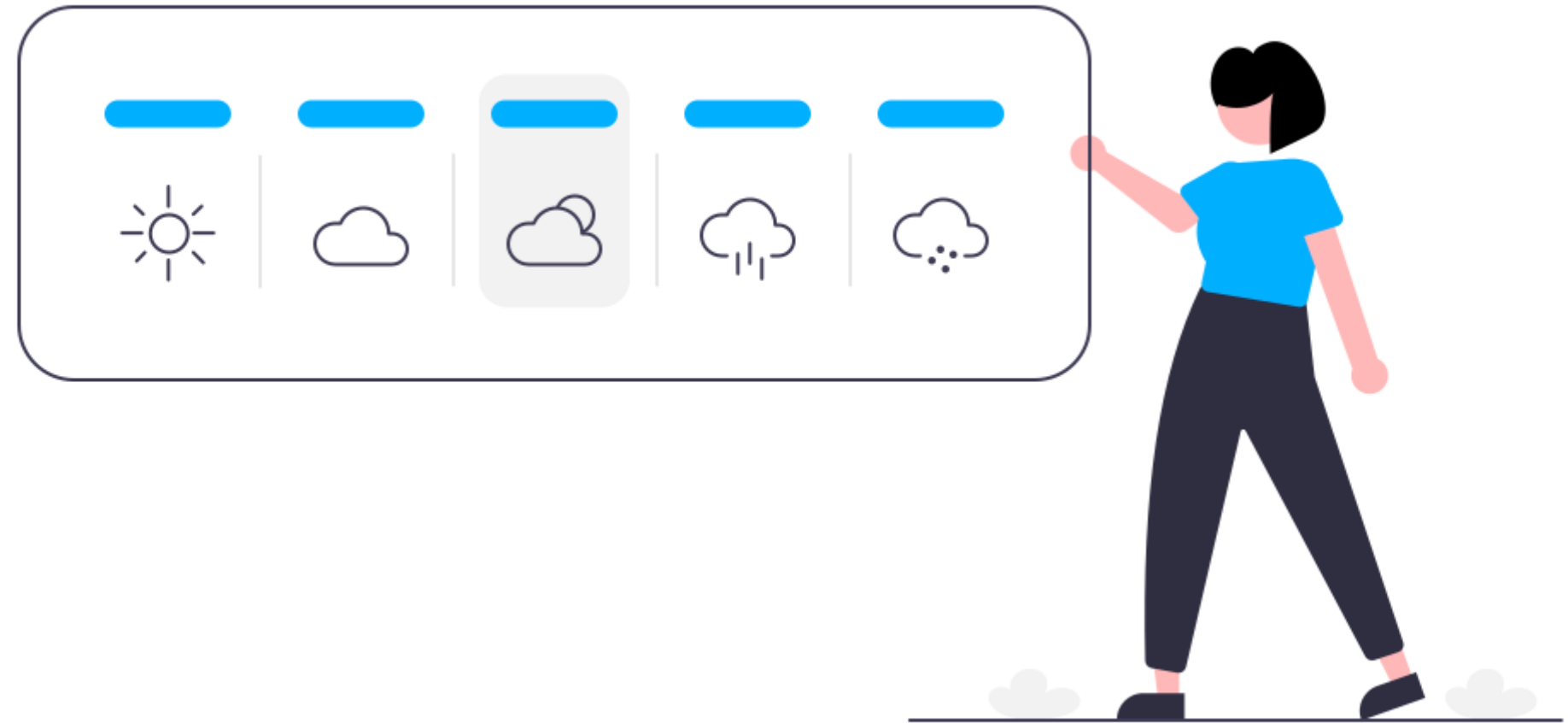
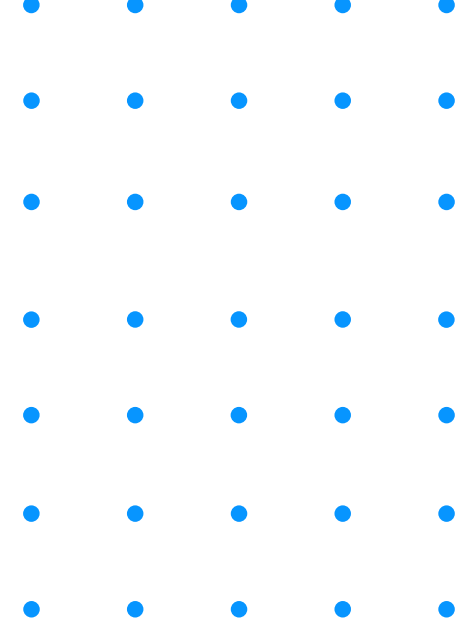


# Your Local & Timely Weather Forecast

Localized weather forecast,  
ranging from 10 days to near real  
time.



# The Problem

Weather has always presented problems for farmers. With climate change, it's often less predictable, and some challenges are getting worse.

## SOME EFFECTS OF UNPREDICTABLE WEATHER ON FARM AND PRODUCTS



DROUGHT



FARM FLOODS



INCREASED PEST ATTACKS



FIRES CAUSED BY INCREASED HEAT & TEMPERATURES



TWIGA



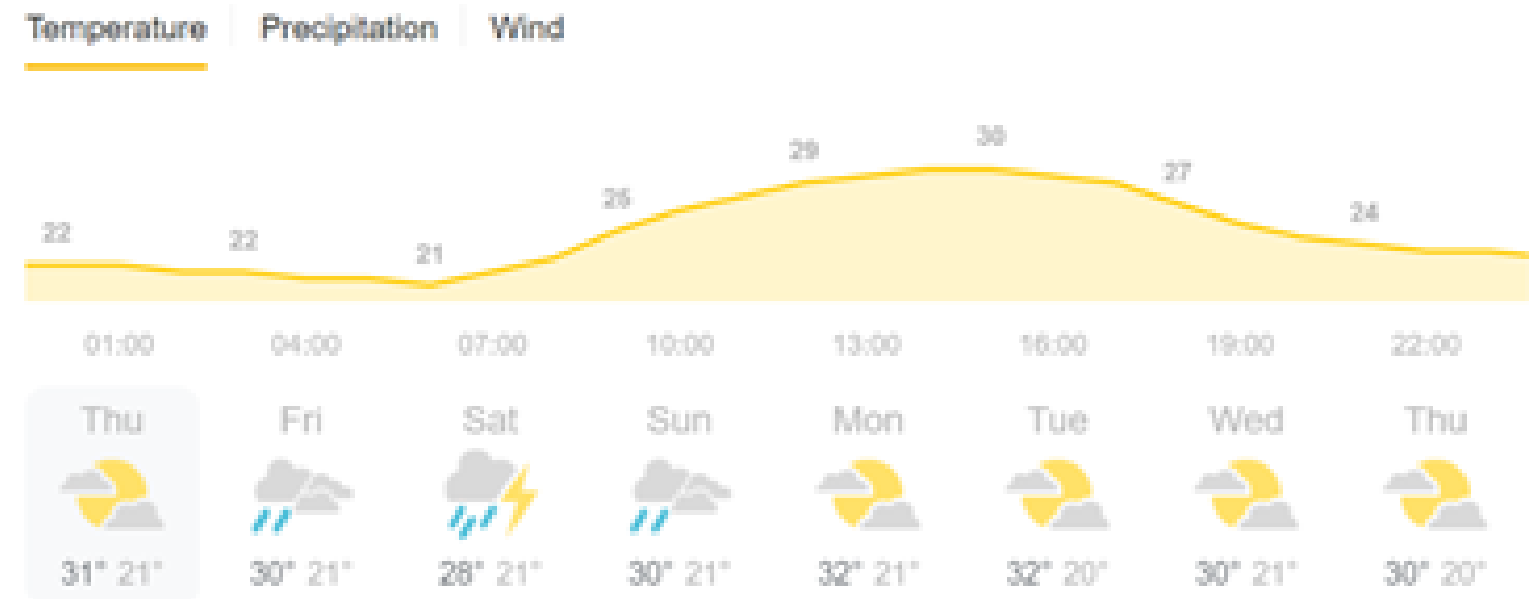
# OUR SOLUTION

This service provides localised weather forecasts, ranging from 10-day to near real-time, to improve (the timing of) agricultural practices.

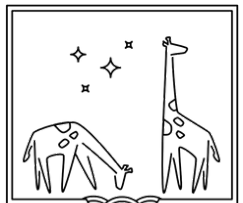
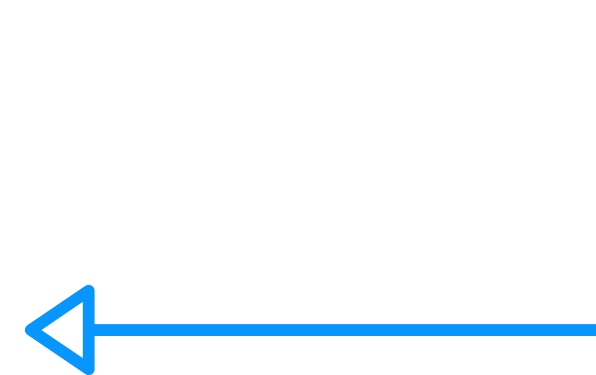
The aim is to send alerts (e-mail, SMS, voice message, app notification) to individuals when the forecasted weather conditions urge for action.

 **31** °C | °F  
Precipitation: 20%  
Humidity: 68%  
Wind: 11 km/h

Farmerline HQ, 10 Prof Sir  
Acheampong Street, Kumasi,  
Ghana  
Thursday  
Partly cloudy



The  
Weather  
Channel



TWIGA



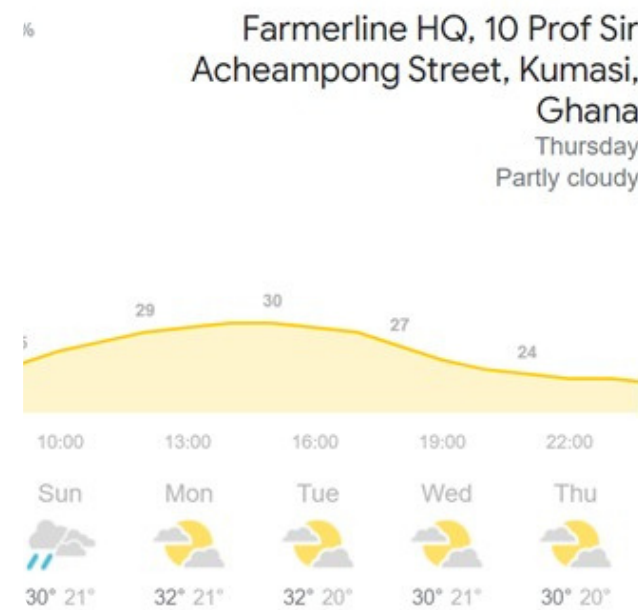
# How it works



Kwabena is a farmer who recently planted on his farmland and has currently started using our weather update service



He recently planted on his farm land



We monitor weather updates and possible conditions that might affect his farm



We then transmit these informations as sms / email alerts to his phone. These alerts make him prepare for possible weather threats to his farm



This leads to little or no loss in yield on his farmland and farm products because he was forewarned and made adequate preparations.

