

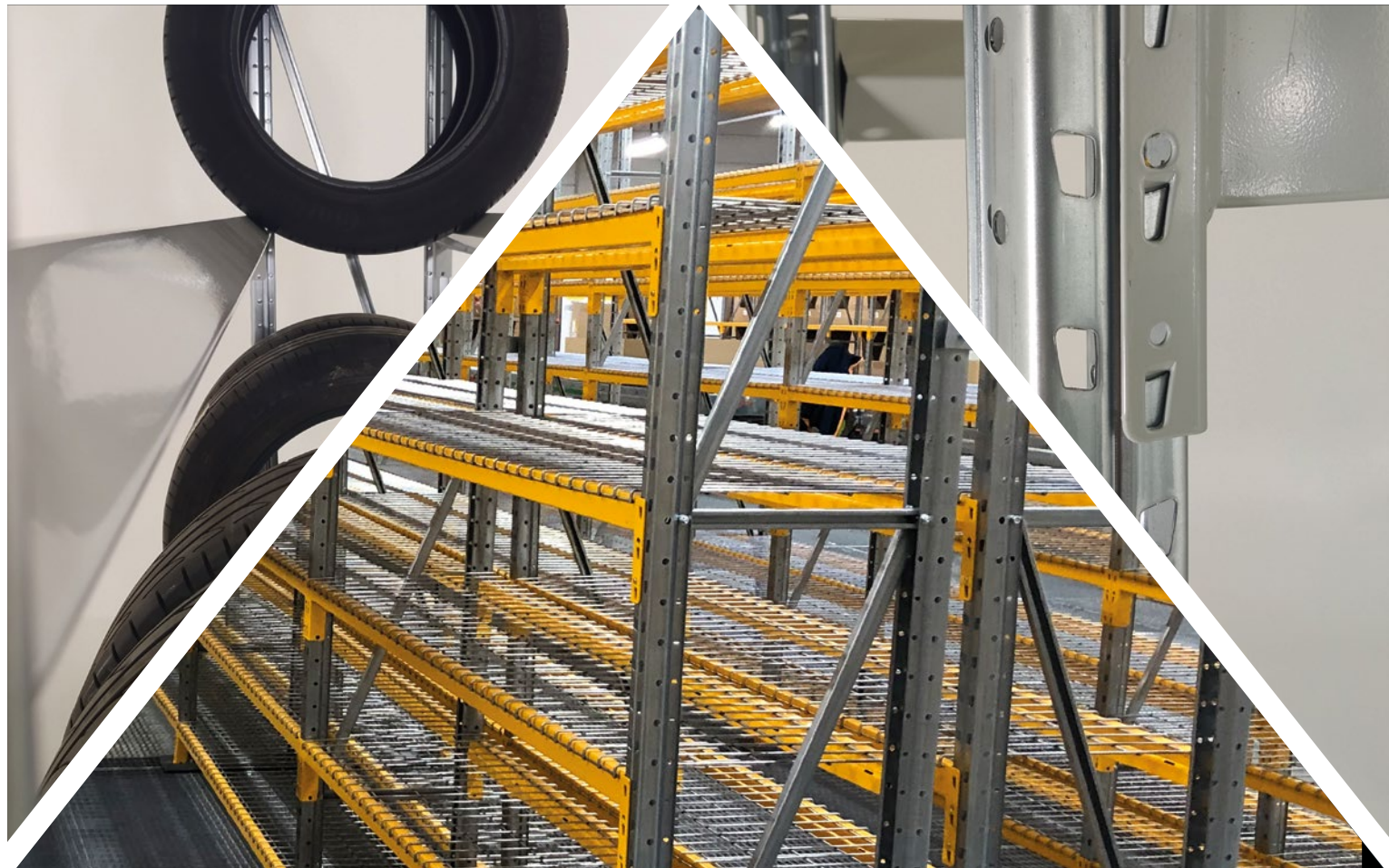
**NEW!**

# EPSIVOL *ONE*

LONGSPAN STORAGE SOLUTION  
UP TO 3M HIGH



**MANORGA**  
THE PERMANENT INNOVATION



## WHY EPSIVOL ONE ?

In addition to the existing Epsivol range, we now offer a ONE version, allowing you to meet the needs of widespan storage with limited load and on heights up to 3 meters.

## ITS ADVANTAGES

### **AN EPSIVOL FULLY-COMPATIBLE SYSTEM**

As Epsivol One is a variant of Epsivol, you keep the overall aesthetics of the original shelving. The storage levels are compatible between the two variants.

### **A LIGHTER FRAME, FASTER TO ASSEMBLE**

As a result of our research, here we offer you a lighter ladder system to transport, handle and install. Reduced diagonalization allows you to improve your assembly times (-20% to -33%)!

### **LOADING CAPACITIES IN LINE WITH YOUR EXPECTATIONS**

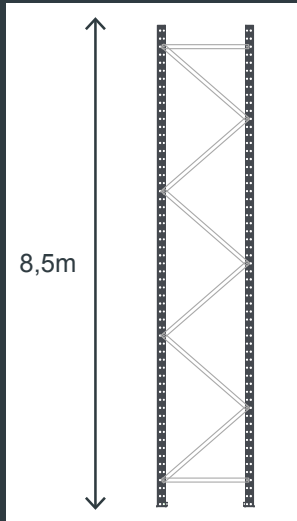
Perfectly suited for the storage of tires or clothing, the maximum loads up to 2500 kg per bay\* also allows you to meet all of your requests for storage levels up to 500 kg per level\*.

Our range of 45 and 65 step beams, complete with a wide range of available deckings (wood, metal, wire mesh, ...) allows you all possible configurations.

# EPSIVOL

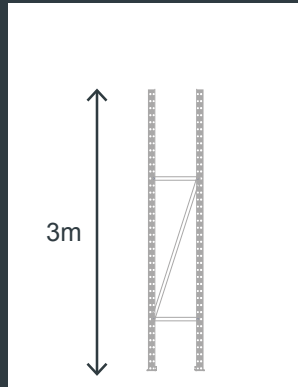
## A COMPLETE WIDESPAN RANGE DEDICATED TO YOUR NEEDS

### EPSIVOL



4500 kg\*  
Painted frames

### EPSIVOL ONE

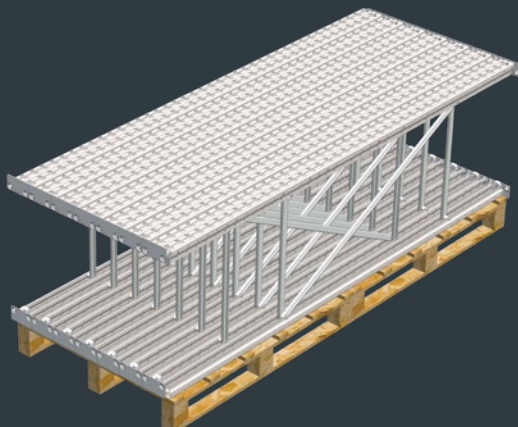


2500 kg\*  
Galvanised frames

■ A load per level and bay\* fitted to your needs



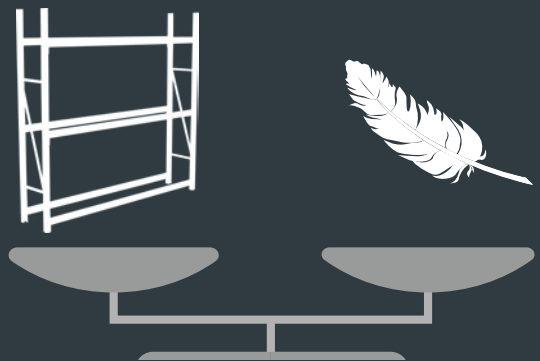
■ Pre-assembled frames can be factory-made, for even faster assembly



■ A reduced diagonalization, lighter and faster to assemble

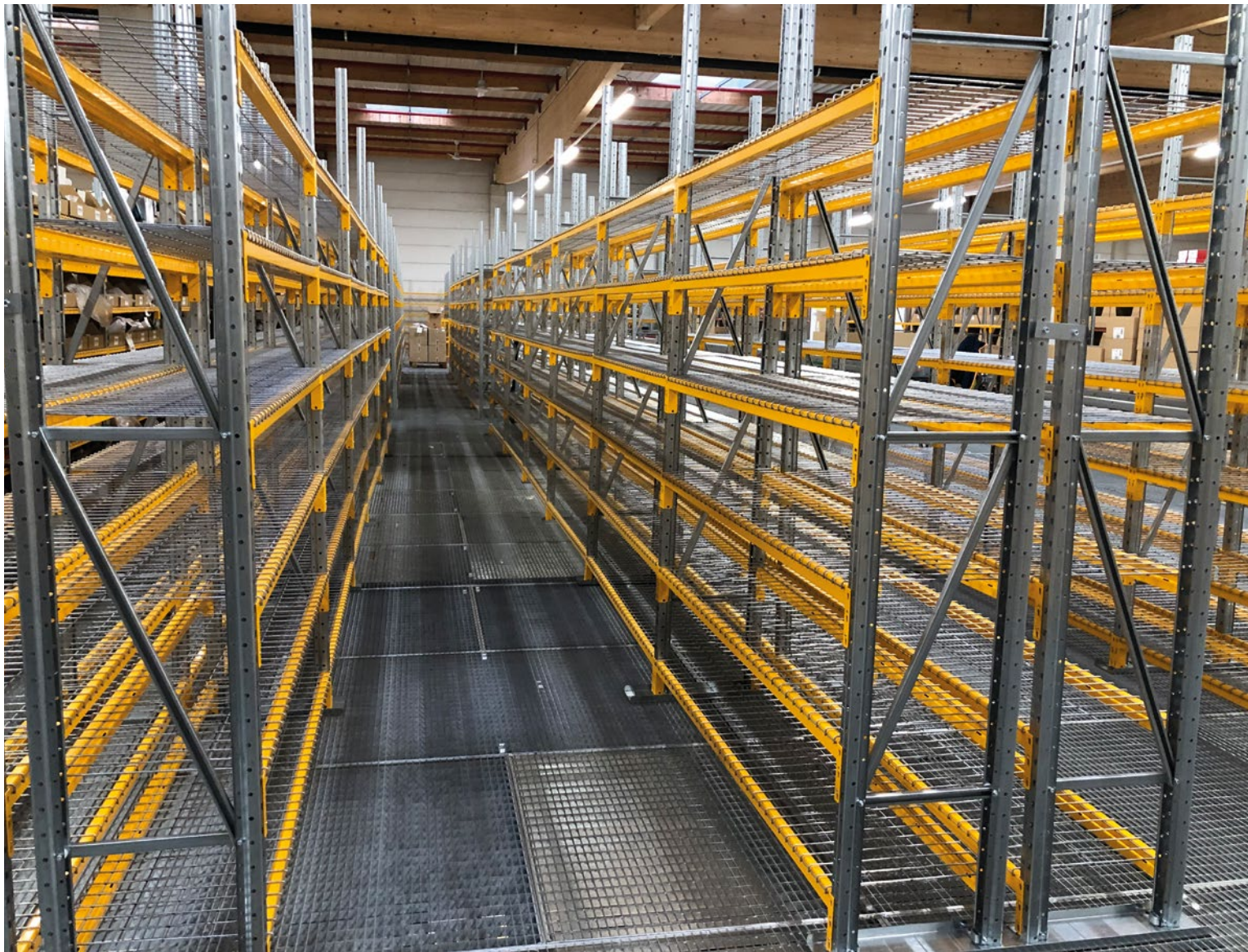


■ A 20% lighter frame, easy to deliver and to handle



■ 100% Galvanised Frames





# MANORGA

THE PERMANENT INNOVATION

## CONTACT



[contact@manorga.com](mailto:contact@manorga.com)



[www.manorga.com](http://www.manorga.com)

Find us on :



@manorga



@manorga

