

Contents

Technical specifications.....	02
Safety measures.....	03
Multimedia system package.....	04
Connection diagram of the device.....	04
Introduction to the device.....	05
Front panel control for M-S.....	05
Turning on/off the device.....	05
Touch screen operation.....	05
Features.....	06
Set the position of the main interface icon.....	06
Change wallpaper of main menu interface.....	06
FM/AM Radio.....	07
DSP Processor.....	07
Music/Video.....	08
BT.....	08
Car Link (CarPlay/Auto).....	09
Split Screen.....	10
MAP Navigation.....	10
How to start cooling fan?.....	11
4G LTE.....	11
Language settings.....	11
Main menu interface settings.....	12
Launcher App Setting.....	12
Additional Features.....	13
DAB+ / OBD II / TPMS.....	13
AV OUTPUT.....	13
360°Camera.....	13
ADAS DVR.....	14
AHD HD reversing.....	14
Rear camera connection method.....	15
CANBus Box.....	16
Possible malfunctions and methods of their elimination.....	18

Technical specifications

Mounting size	9" / 10"
Screen resolution	1280x720 IPS
Screen size	9" and 10"
CPU	UIS7862 1.8GHz 8-core (2 cores ARM cortex A75 + 6 cores ARM cortex A55)
RAM	DDR3 2GB / 3GB / 4GB / 6GB/ 8GB
ROM	32GB / 64GB / 128GB
Operating system	Android 11
Maximum output power	4 x 45 W
Sound amplifier	TDA 7388/Toshiba 001 (M200S M300S) TDA7851 / 7850/ 7838 (M400S M500S M600S M700S)
Chip FM tuner	NXP TEF6686
Features of the equalizer	Low Pass Filter, Tone Compensation, Balance Mode Balance mode, surround sound mode, extended Equalizer settings (32 bands)
CarPlay / Android Auto	Supported (add-on Car Link)
Video format	RMVB, MKV, MOV, WMV, AVI, MPG, TS, H.264 codec and others.
Audio format	MP3, WMA, WAV, OGG, FLAC
GPS	Built-in receiver with external antenna
Software for navigation	Support
Wi-Fi	Support
360°Camera	Support
BT	A2DP and BT address book transfer
Control of the steering wheel buttons	Support
ADAS DVR	Activation in the settings menu
AHD HD reversing	Automatic activation of video input
4G Internet / 4G LTE	Support
DSP	Support
Start	16 c ~ 20 c
Voltage during operation	DC12V
Voltage at operating range	9V ~ 16V
Electric current	15A
Operating temperature	-20°C - +70°C
Main menu language	Support for multiple national languages
Guarantee	One year

Dear Customer:

Thank you for trusting and purchasing our car multimedia system. To ensure effective and safe use of your device, please read these instructions carefully before use.

Note: Due to the continuous improvement of our products, some descriptions in this manual may differ from the actual equipment. Specifications are subject to change without notice.

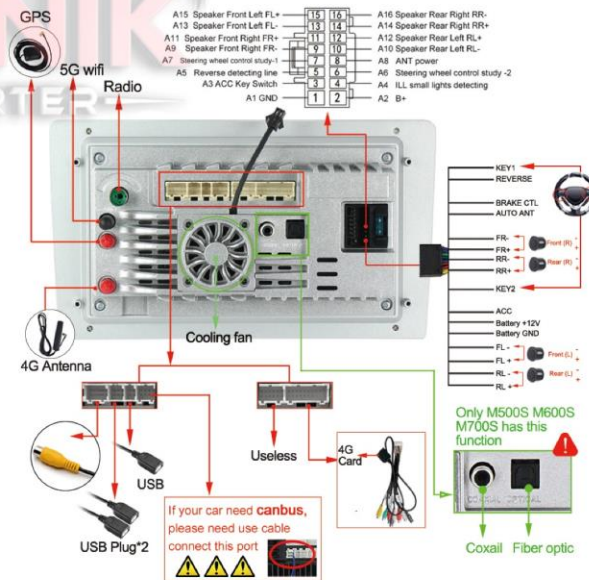
【 Safety measures 】

1. It is forbidden to watch videos or other visual accessories while driving! Active use of the system during driving is not recommended because it can reduce attention and may result in violation of DA and road accidents.
2. The unit is designed for use in cars with a 12V power supply and a minus ground. Do not install the system in a bus or truck with an on-board voltage of 24V. This may cause damage to the device.
3. Use a special cleaning device to take care of the screen.
4. To avoid overheating of the device, do not allow direct exposure to sunlight and do not install near the heating system. Operating temperature is between 0°C and 35°C. If the temperature inside the vehicle is too high, it is necessary to cool the interior before switching on the system. It is also not recommended to operate the unit at very low temperatures. It is necessary to wait until the temperature of the interior and the vehicle returns to normal. When the temperature is low, the image on the screen may change with a delay. This is not a malfunction. Wait until the multimedia system reaches the operating temperature.
5. Only use the fasteners provided (screws, mounting frames, etc.) for installation. The use of other fasteners may result in damage to the system, and this is not covered by the warranty.
6. Installation and connection of the device shall be performed by a qualified specialist, or specially trained staff of the service center.
7. Do not reset to factory settings on your own unless in extreme cases, as this will cause loss of your settings, which may result in incorrect operation of the system.
8. Violation of the above items and improper use may cause the system to malfunction. In this case the warranty service will not be performed.

Multimedia system package



Connection diagram of the device



Introduction to the device

Front panel control for M200S M300S M400S M500S M600S M700S



1. microphone
2. Emergency reassembly of equipment
3. input/output switch/live switch/- sound switch
4. return to main menu
5. Switching back to the previous menu
6. Increase volume
7. Lower the volume

Switching the appliance on/off

Switching on: After switching off the ignition and starting the engine, the multimedia system is automatically switched on. The display shows the initial screen.

Exception: The unit activates automatically after the engine is switched off.

Touch Screen operation

This unit is equipped with an interactive touchscreen display. Before using it for the first time, the sealed plastic membrane must be removed. Otherwise the touch screen may not function properly.

- Touch

Click the necessary item with your finger to start the plugin (signal source) or select the menu item (option).

- Double Tap

A quick double touch allows you to resize when viewing images.

- Touch & Hold

Click and hold the item for 2 seconds to trigger an additional action available for that item.

- Dragging

Touch and hold the selected item, then drag it onto the screen.

- Moving

Rotate the screen with your finger and keep your finger touched, move your finger in the right direction throughout the screen.

- Scroll through

Move your finger on the screen in the direction you need to and let go. Rotation can be stopped by touching the screen, or wait until the motion stops itself.

Attention! Do not use metal or sharply sealed objects to control sensory interactive display. Also don't apply excessive force when touching the screen.

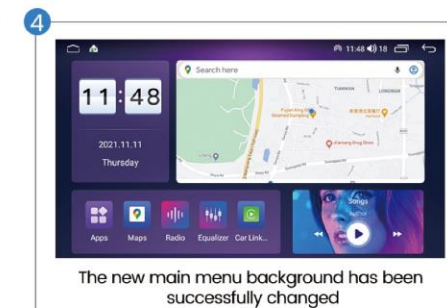
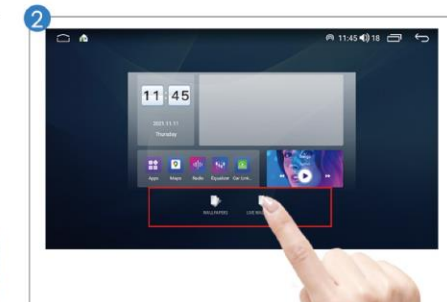
Features

Customize the position of icons in the main interface, and all applications can be freely edited according to the position of the quick menu bar for easy operation.



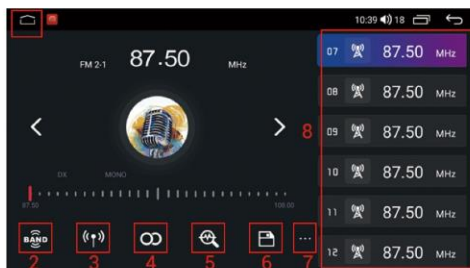
【 Change wallpaper of main menu interface 】

You can set a picture or a photo as a background for the main screen. You can choose from the previously installed Live Spreadsheets (Live wallpaper) and Spreadsheets (wallpaper) or you can choose from images or photos stored on a USB memory device or SD memory card.



【FM/AM Radio】

To access the Radio, click the appropriate icon (Radio) on the main menu.



1. Main menu
2. The FM switching group
3. LOC mode or DX mode. "LOC", the radio will only receive stations with a strong signal. "DX", the radio will receive all the stations in the current range.
4. MONO mode
5. Automatic scanning of the stations
6. Save the station
7. Additional adjustments
8. List of saved stations

Note: By tapping on the scale bar, you can quickly select the desired frequency.

【DSP Processor/Equalizer】

To access the equaliser (EQ) option, press the (Radio) or (Equalizer) icon on the menu. We are equipped with a DSP chip that allows you to use advanced sound settings in your car.



Equalizer mode

The equalizer menu allows you to adjust the sound depending on your needs and preferences, using different frequency settings. You can adjust the volume by decreasing or increasing the volume of each of the 32 bands. Available values: Rock/ Soft/ Jazz / Pop / Classical / Rock / Hall). To reset all settings to zeros, press the button "Standard"



Automatic volume mode

In the EQ menu you can choose one of the recommended settings for the listener position. Available settings are: Driver Mode / Passenger Mode / Rear / Center. Or independently turn the position by indicating on the diagram of the car.

Balance mode

The equalizer menu adjusts the volume ratio of the speakers to achieve a comfortable sound. The tuning is done by moving the point behind the layout of the car interior. This equalizer function also supports parametric bass tuning. You can change the center frequency and the gain at this frequency.



Bass Enhancement

In the equalizer menu you can reverse the high and low frequency tones. You can change the boost factor for high and low frequencies.

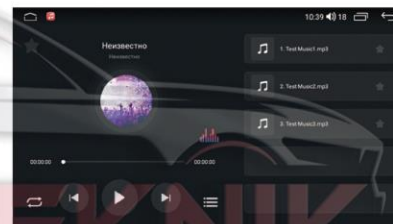


Bass filter

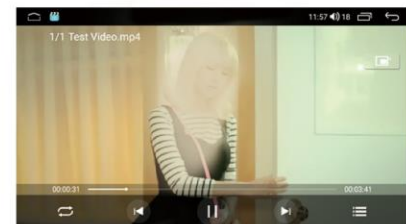
In the equalizer menu you can set the desired frequency for each speaker in your car. Available values: Front Dynamics / Rear Dynamics.

【Music / Video】

Connect a USB storage device or insert an SD memory card and press (music) for music playback, press (video) for video playback.



Music



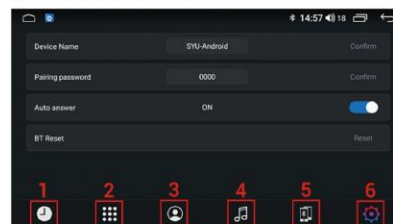
Video

The format supported by the video player is as follows: MP4 / AVIMMV / MOV / MKV / MPEG / RMVB etc.

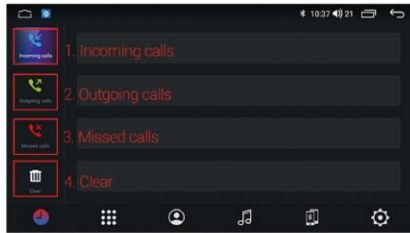
Attention! Given the security of the video, you cannot view it while the car is in motion. To view the video, stop in a safe place and apply the handbrake.

【BT】

In the main menu click the "BT" icon, enter the BT hands-free interface, and at the same time open the phone BT "search for new devices" function, when the system and the phone to get a signal contact, will prompt the phone "whether to connect with the device", the phone select "yes" and enter the password (0000) to confirm, the system and the phone link, the system screen shows "connected", indicating a successful connection.

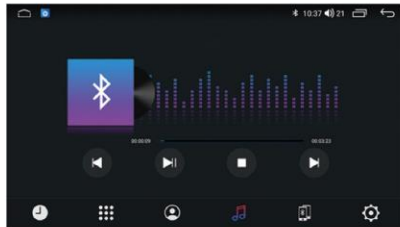


1. Call log
2. Dialing interface
3. Telephone book
4. BT music
5. Check connection
6. BT settings



Call log

In this section you can view the last outgoing calls, incoming calls or missed calls.



BT music

This menu is for listening to music from a mobile phone via BT connection.

To use the program, you need to connect your mobile phone to the multimedia device via BT.

You can start the add-on in the list of all add-ons. You can listen to music from any add-on.

【Car Link】

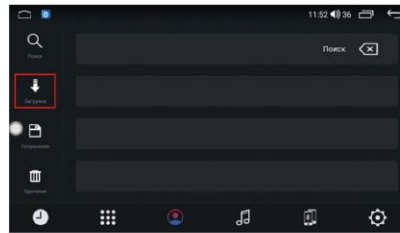
Car Link is an add-on that allows you to use your iPhone and Android in the car without being distracted from the road. By connecting your iPhone / Android to Car Link you can use the satellite navigation system, make calls, send and receive messages, listen to music and do many other things.

Wireless CarPlay (IOS System)



Connection steps:

1. Connect your phone via BT
2. Tap on "Car Link", the phone will ask for authorization to connect, authorize the connection and wait for the connection.



Telephone book

In this menu, you can synchronize your phone book with your device and call the selected contacts. Press (download) to synchronize the contact with the BT device.

Depending on the car, you can run CarPlay with Siri in two ways.

1. Press and hold the voice command button on the drive. Ask Siri a question or ask for any action.
2. Press and hold the CarPlay Dashboard toolbar button or the CarPlay main screen button on the sensor screen. Ask Siri a question or ask for any action.
3. CarPlay will feature Siri's suggestions for further actions such as a scheduled meeting trip. Thanks to the perfect integration of the Siri and CarPlay offers, your favorite applications will always be in hand.

Android Auto

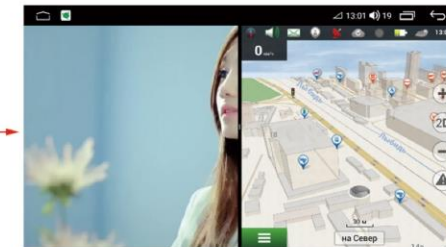


Connection steps:

1. Connect the mobile phone and car DVD player with USB cable
2. Tap on "Car Link", the phone will ask for authorization to connect, authorize the connection and wait for the connection to complete.

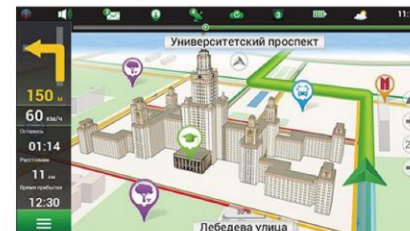
【Split screen】

On the screen of the main device, you can display two additional devices. For example, the navigation program and music.



To exit the split screen mode, pull to the right the icon between the two screens.

【MAP Navigation】



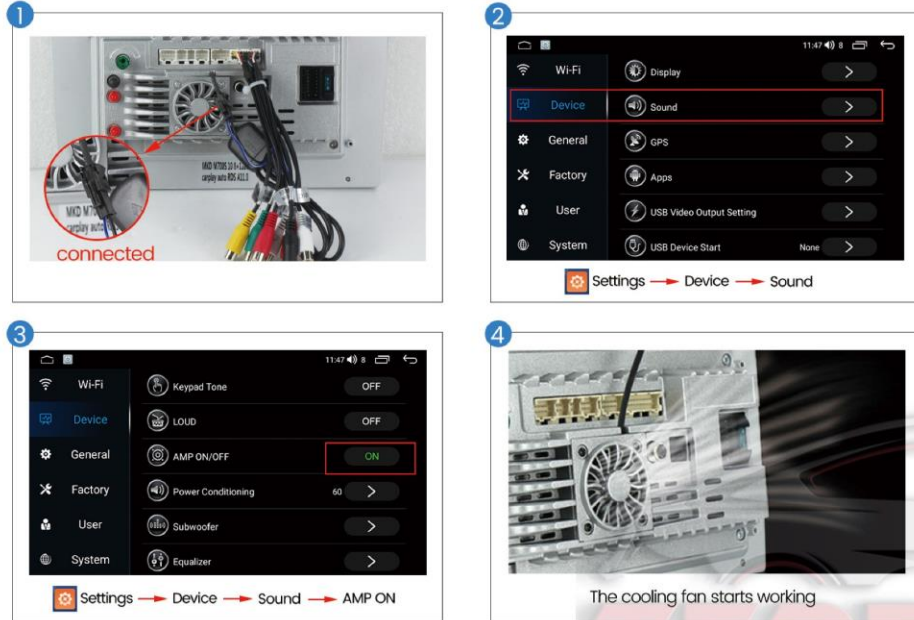
Built-in global positioning system, omnidirectional map display, synchronous real time traffic display, fast and accurate positioning.

The following navigation APPs are supported :

1. For Navitel
2. For iGO
3. For Yandex
4. For Google

【 How to start cooling fan? 】

Setup steps:



【 4G LTE 】

Connected to 4G, you can watch live video, listen to music online, play games, watch movies and make your car seamlessly connected to the Internet at any time.



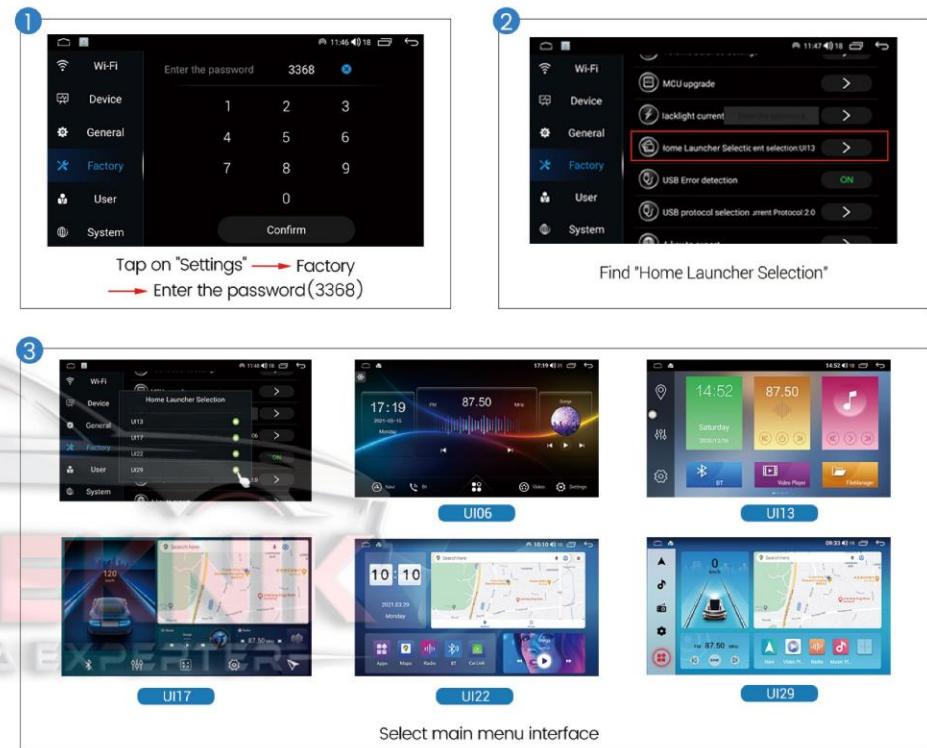
【 language Settings 】



【 Main menu interface settings 】

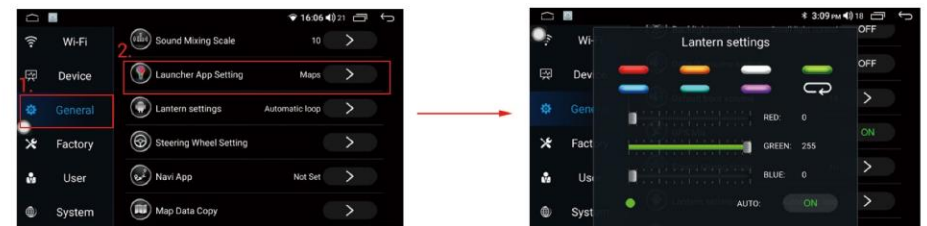
Our products have 5 different main menu screens that you can choose to display according to your preferences

Setup steps:



【 Launcher App Setting 】

The device has a multicolor illumination and can be set to different modes of light, for this you need:



Select the light you want or set it to automatic color change.

【 Additional Features 】

Note: additional accessories must be purchased to use the following features.

DAB+



EU DAB+ radio universal for all android radio, make you get better sound quality and stronger signal, only for buyers from EU countries.

OBDII



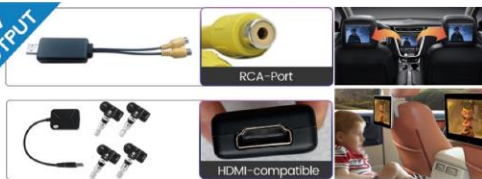
With the OBDII function available on this unit, you can monitor real-time data and the fault code received from the on-board computer.

TPMS



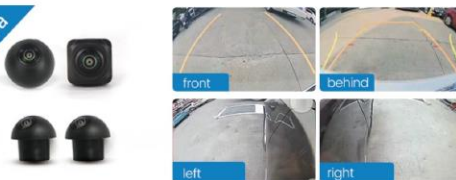
Once you have properly installed a TPMS on your vehicle, the sensors will automatically monitor the tire pressure and temperature and transmit real-time statistics to the receiver.

AV OUTPUT



The video output can output the displayed content, and the rear passengers can watch HD video and HD audio through the video cable from the navigation console on the headrest display screen.

360° Camera



If you want to add a 360 camera must order along with your car radio, because we need a built-in 360 Camera Chip to the motherboard radio.

ADAS DVR



Driving recorder with collision warning
Predicting the distance to the vehicle in front, warning of collision with the vehicle in front, and lane departure warning make driving safer.

Installation steps:

- Connect via USB cable
- FileManager
- Install the software
- The software is installed successfully

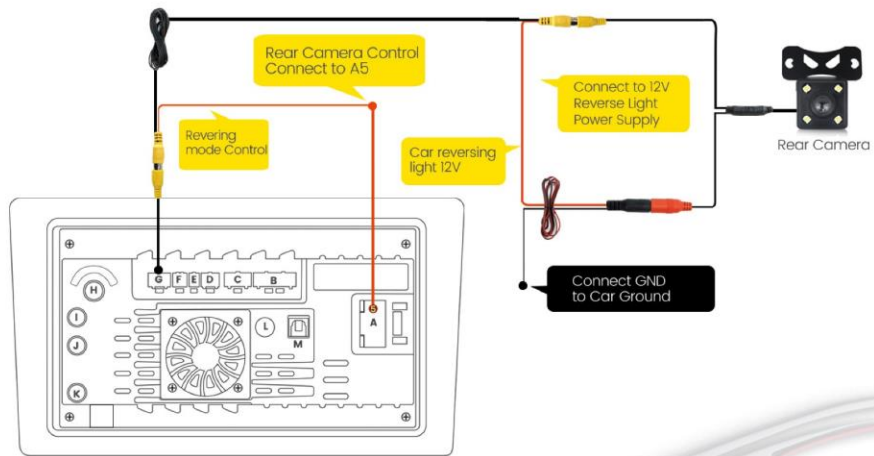
AHD HD Reversing



The image quality of AHD rear view video is sharper than conventional cameras.

REAR CAMERA CONNECTION METHOD

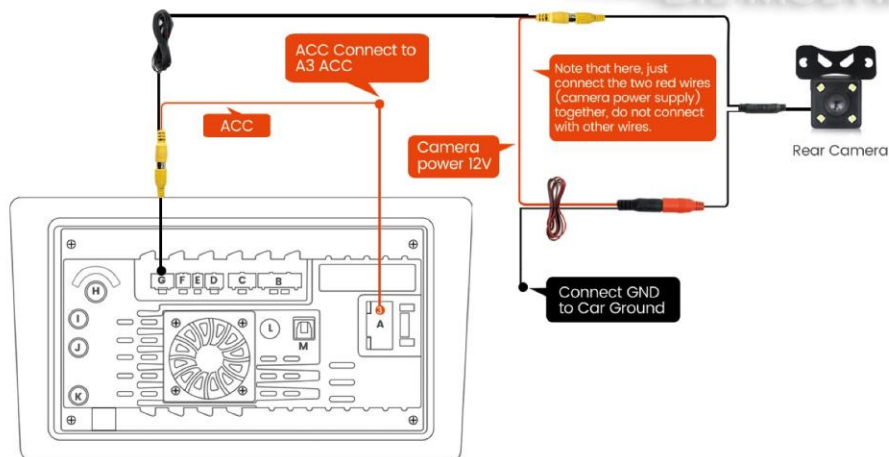
1 Without CANBus Box



2 With CANBus Box

Note:

Connection of the yellow line will not be needed, if you already have a canbus box and the reverse control line (A3 area) has been connected to the canbus box.



CANBus Box

Please note!

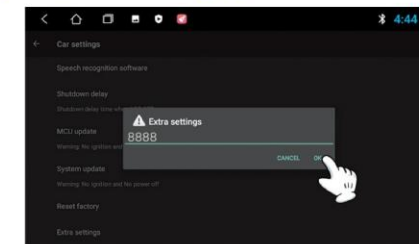
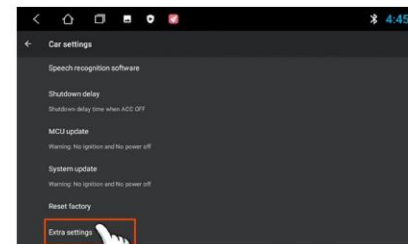
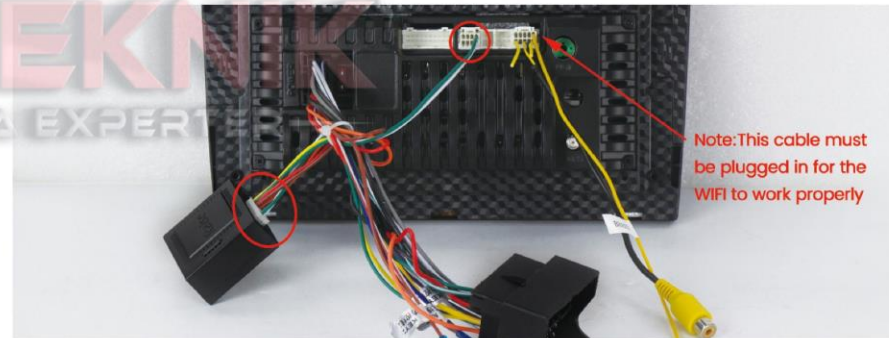
If the original functions of your car cannot be used (steering wheel control AC,...), this CANBus type needs to be set.

Before setting up CANBus please check your canbus photo. Then select the corresponding CANBus type!

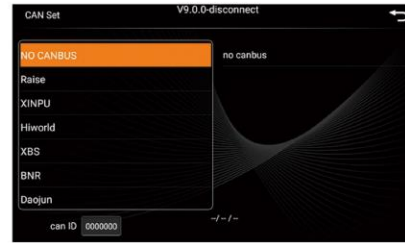


【 For TS7 T3L TS18 TS10 M100 M150 and Y1 Y2 TS100 TS150 TS200 】

Setup steps: 1. Connect as shown in the picture



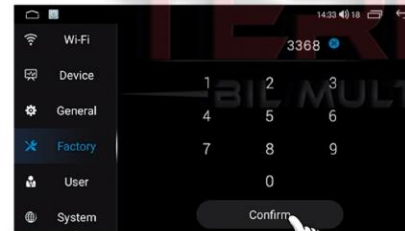
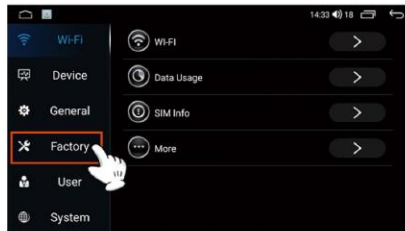
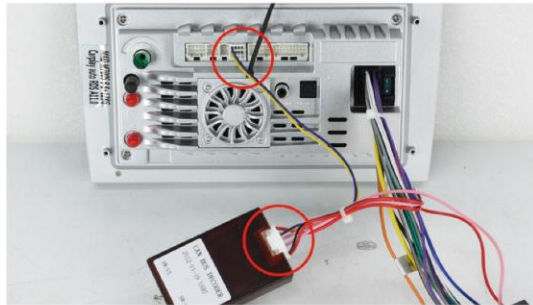
Settings > 2.Car Settings > 3.Factory (Password:8888)



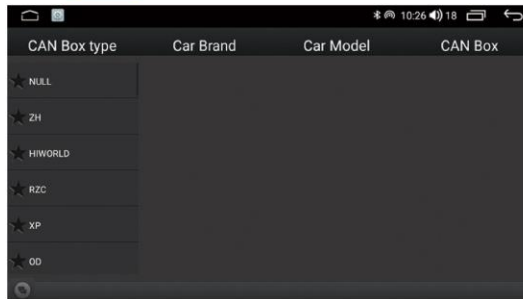
4. Car Model

【 For 9863 7862 M200 M300 M400 M500 M600 M700 】

Setup steps: 1. Connect as shown in the picture



2. Setting > 3. Factory (Password:3368) > 4. Car Model



5.

Possible malfunctions and methods of their elimination

If you have a problem, try disconnecting and then reconnecting your device.

Use the special key to press the Reset button.

If this does not solve the problem, please refer to the sections in the list below.

These instructions will help you to solve the problem if the device does not work properly.

Otherwise, check that the device is properly connected or consult your authorized dealer.

Symptoms	Probable cause	Solution
General problems		
	The ignition key is not in the "On" position.	Turn the key to the "On" position.
It doesn't get in the way.	Overheated fuses 15 A.	Check the presence of the circuit breaker in the device, if it is not working, replace it with a good one of the same nominal size.
	Incorrect connection of the electrical supply droplets (black and yellow).	Check the connection of the electrical supply.
BT		
Phonebook contacts are not transferred.	No rights on the phone.	After connecting the phone to the device, go to the BT setting on the phone, and authorize the transfer of the phone book.