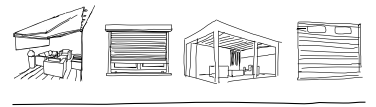


**HAROL®**



**Keep comfort  
and privacy in  
and noise out**



# *Roller shutters that meet all your requirements*

Looking for the most attractive, reliable way to lock up the windows in your home or business? Harol roller shutters are the ideal solution. Without exception they are strong, user-friendly and have a contemporary design. They will help to reduce your energy bills and shield you from noise, heat and cold. So if you are looking for a higher level of comfort, an increased sense of security and a design that suits the style of your home or business, then look no further, because Harol roller shutters are always the best!

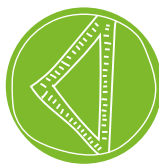
*Harol is pure enjoyment!*



INSTALLATION BY  
PROFESSIONALS



REQUIRES LITTLE  
MAINTENANCE



MADE TO  
MEASURE



CONTEMPORARY  
DESIGN



TOP-QUALITY  
BELGIAN  
PRODUCT



ROBUST  
WARRANTY



HEALTHY INDOOR  
CLIMATE

*You choose  
the weather*



P6 **Silensio™, ultrasilent  
roller shutter**

The latest generation of  
roller shutters

P8 **ALU42 THERMO**  
The super-insulating slat

P10 **Make the switch!**  
Discover the many benefits of  
electric roller shutters

P12 **Surface-mounted  
roller shutters**

Maximum comfort with  
minimal adjustments

P22 **Built-in roller shutters**  
Sleek look, huge advantages

P26 **Built-on roller shutters**  
One solid, robust unit integrated  
in the window frame

P32 **Accessories**  
A world of options  
and accessories

# Outstanding enjoyment with Harol

New build or renovation? Classic or modern? Our solutions are outstandingly versatile and perfectly adaptable to suit your family, architectural style and type of building. Moreover, they effortlessly meet the increasingly stringent requirements in terms of comfort, safety and energy efficiency. For three generations we have been building on our experience in sun protection, garage doors, roller shutters and outdoor solutions, and it shows!

In addition to creating a lasting value, Harol is also a real trendsetter. We are continuously innovating and perfecting. This is the only way we can succeed in our mission: by ensuring you can enjoy a customized solution that offers you everything. And only the best is good enough!

*Annick Draelants*  
*CEO Harol*





*Whichever solution you choose,  
you benefit fully from these advantages:*



## Comfort

The motorized Harol solutions guarantee ultimate user comfort. Using a remote control, smartphone or tablet; one command operates all our products. Are you looking for 100% trouble-free operation? Opt for automatic controls. This solution will take care of all the controls. You can relax, as the settings are always optimal.



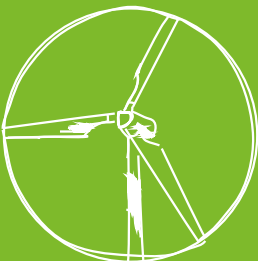
## Security

Harol products not only add character to your home, they also protect your family from unwanted visitors. Our specially-developed security packages go even one step further. Smart solutions, robust equipment and automatic control systems provide even more barriers. And during extended absences these will give the impression you are still at home. This way no one can jeopardize your sense of security.



## Design

Our extensive range of roller shutters, sun protection, garage doors and outdoor living products complements the most diverse architectural styles, from classic to ultramodern. We customize every solution. Choose from more than 300 RAL colours, scratch-resistant textured coatings and colour foils (only for our gates). We know how to harmonize our solutions with your living style.



## Energy efficiency

Save resolutely on your energy bills with Harol's energy-efficient solutions. Our solutions keep abreast of the increasingly stringent requirements regarding energy consumption. Thus, the innovative elements we incorporate, are the optimal solution for shutting out sun and cold. For maximum efficiency, our solutions can be programmed to respond to the many diverse weather conditions.

**These features - along with the largest selection on the market - make our solutions the ultimate reference...**

*Genuine must-haves!*

*Revolutionary!*



# The latest generation of roller shutters: Silensio™

## World-class innovation

The Silensio™ roller shutters combine the new generation Somfy motor with the innovative roller shutter technology by Harol, resulting in a focus on ease-of-use, durability, energy-savings and security. These new roller shutters are smarter, but above all quieter. Much quieter. And with a 40% longer lifespan, they are also the most reliable on the market. Who can resist these benefits?

## Superior living comfort

The Silensio™ roller shutter represents a new generation of roller shutters that is almost imperceptibly present in your home. The ultra-quiet tubular motor is quieter than any other household appliance! With an almost inaudible 'soft start & stop' function, the typical sound of slats clattering together is eliminated. Also, there are two speed settings, depending on the home owner's requirements. The obstacle detection function is extremely sensitive and will take effect immediately when needed.

two speed  
options

ultra  
silent

soft start  
& stop

lift security  
system

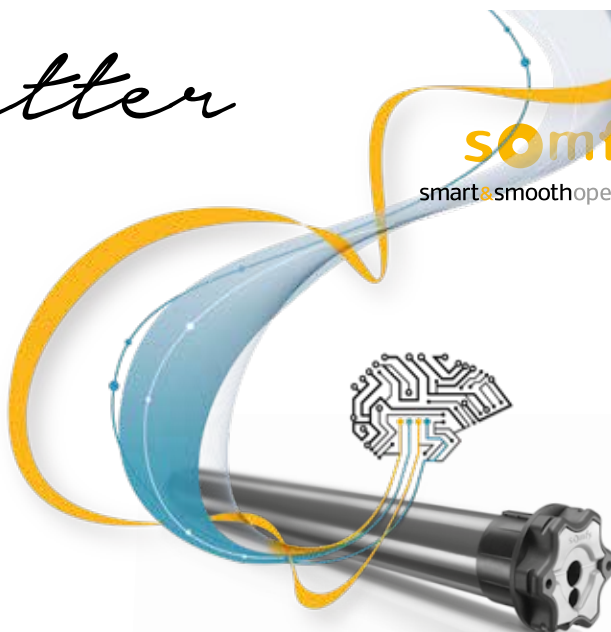
frost  
protection

superior  
obstacle  
detection

→ *Ultimate comfort with a  
Silensio™ roller  
shutter*

**somfy**  
smart&smoothoperator®

**HAROL®**



**QUIETER.  
SUSTAINABLE.  
MORE SECURE.**



*More info:  
→ [www.harol.com](http://www.harol.com)*

**HAROL®**

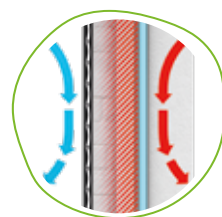
*Super-insulating!*

# ALU42 THERMO



The **1st** aluminium slat with a higher insulation value than a standard PVC slat

Because of a special coating containing a high number of reflective aluminium particles, ALU42 THERMO slats reflect the heat from the house. The static layer of air between the window and roller shutter is further heated, resulting in a higher insulation value. The aluminium coating is either on the concave or convex side of the slat, depending on the roll-up (surface-mounted roller shutter or built-in/built-on roller shutter construction), but it is always directed towards the external joinery. Foamed slats provide extra strength and more durability.



AVAILABLE IN  
FOUR POPULAR  
COLOURS!



**R-value\* of ALU42 THERMO slats:**

**0.25 m<sup>2</sup> K/W**

- Standard aluminium slat has a value of 0.14 m<sup>2</sup> K/W
- Standard PVC slat has a value of 0.21 m<sup>2</sup> K/W

\*The higher the R-value, the higher the insulation value





More info:  
→ [www.harol.com](http://www.harol.com) **HAROL®**

# Ultimate comfort

## Make the switch!



### Discover the many benefits of electric roller shutters

You can opt for manual operation using a tape or crank, but nothing is as easy, comfortable and efficient as an electric motor. One press of the button, and your electric shutter opens or closes, quickly without applying any muscle power.

For even greater convenience, security and energy-savings, we recommend the io-homecontrol® system. This genuinely offers the ultimate in comfort!



somfy

### Why is io-homecontrol®\* a must-have?

- Thanks to io-homecontrol® technology by Somfy, you can control and monitor the position of your roller shutters remotely.
- One instruction on your smartphone is sufficient to roll down your shutters.
- Rolling down your roller shutters becomes an easy reflex, making your home more secure in an instant.
- You can set up scenarios before leaving your home, for example for bedtime etc.



Timer



Hand-held transmitter



Wall transmitter



Smartphone or tablet

### You can choose between four types of motors, each with numerous benefits:

Standard electric	RTS	IO*	Silensio™
<ul style="list-style-type: none"><li>✓ No tape or crank required</li><li>✓ More ease of operation</li><li>✓ One push of a button is sufficient</li></ul>	<ul style="list-style-type: none"><li>✓ Radio-controlled</li><li>✓ Wireless transmitter (wall transmitter, manual operation)</li><li>✓ Timer options</li><li>✓ Obstacle detection</li><li>✓ Frost protection</li><li>✓ Intruder-proof</li><li>✓ TaHoma box available</li><li>✓ + All the benefits of a standard motor</li></ul>	<ul style="list-style-type: none"><li>✓ Extra security due to feedback to the transmitter</li><li>✓ Option to set scenarios</li><li>✓ Detailed automation options</li><li>✓ Worldwide operation with status update**</li><li>✓ + All the benefits of an RTS motor</li></ul>	<ul style="list-style-type: none"><li>✓ Ultra-silent</li><li>✓ 40% longer lifespan</li><li>✓ Optional 2 speeds</li><li>✓ Soft start &amp; stop</li><li>✓ Superior obstacle detection</li><li>✓ + All the benefits of an IO motor</li></ul>

\* To control the roller shutters with io-homecontrol® you need a TaHoma box.

\*\* Operation from a smartphone and/or tablet with a status update of all connected products.



*More info:  
[www.harol.com](http://www.harol.com)*

**HAROL®**



# Surface-mounted roller shutters

Are your windows not ready to be replaced yet? Then surface-mounted roller shutters could be the answer. Even if you did not have shutters fitted when your new home was built, there is no need to worry! Harol surface-mounted roller shutters can be fitted at any time, without the need for elaborate reconstruction or demolition work.

Why not install roller shutters? They will provide extra comfort all year round! In winter they keep in the heat, and on hot days your house is kept comfortable and cool. Roller shutters not only shut out the outside light, they also reduce street noise. And best of all: this investment pays for itself. Your house is more insulated, so you spend less on heating or cooling. Add to that the additional privacy factor, and an increased sense of safety, which means you will never want to be without your shutters again!

→ *Suitable for small  
and large areas*

*Surface-mounted  
roller shutters*  
**HAROL®**





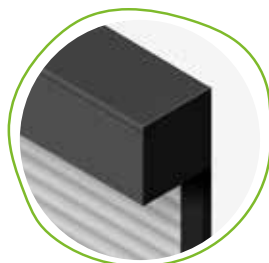
More info:  
↳ [www.harol.com](http://www.harol.com)

**HAROL®**

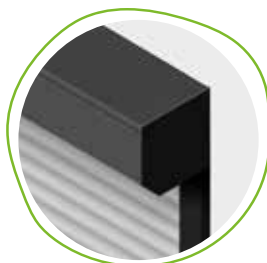
# VR150, VR200 and VR150 Silensio™



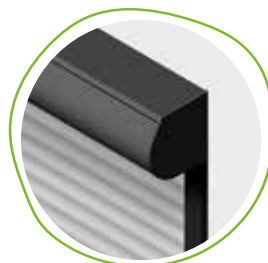
## Opt for either a modern or classic look



Straight-edge box  
VR150



Bevelled box  
VR150, VR200



Rounded box  
VR150

### Benefits

- Sleek design
- Standard in aluminium
- Extruded aluminium option for VR150 (only applies to the bevelled box)

### Benefits

- Classic look
- Standard in aluminium
- More light



## Impressive colour palette

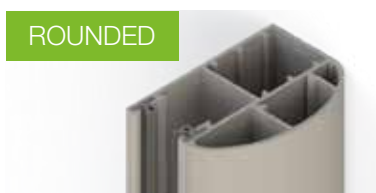
Coordinate your colours and match the shutters to your exterior joinery. Box, guide rails and bottom lath are standard available in all RAL colours (K-250 RAL range) together with a wide range of contemporary colours in textured coating. Imitation wood look also available for the VR150.

## Choice of 6 different guide rail types

Your home situation, the type of box and your personal preferences determine the type of guide rail you require. Below is our wide range of guide rails, with an explanation of the best guide rail for a particular situation.



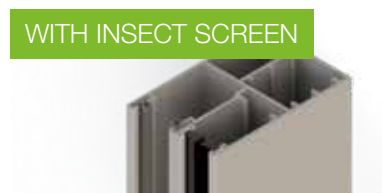
Flat rail



Perfectly matches the rounded box



Ideal to place on the window frame



For added comfort



For peace of mind



For installation in the window opening

Surface-mounted  
roller shutters  
**HAROL®**



**TIP!**

The roller shutter curtain is available with or without light and ventilation slots.  
This allows you to determine your personal atmosphere for the room.  
Please note: a roller shutter does not shut out 100% of the light.

## Slats provide an attractive look, with additional security and insulation

Concave or convex side to be outward-facing? You can choose whichever you prefer.



VR150  
PVC SLAT PVC37



VR150  
PVC SLAT MIDI



VR150  
ALU SLAT ALU35



VR150  
ALU SLAT ALU37



VR150  
ALU SLAT ALU42



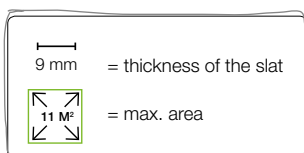
VR150  
ALU SLAT ALU42S



VR150  
ALU SLAT ALU42TH



VR200  
ALU SLAT ALU55



### Slat colours

Available in a variety of fashionable colours.  
See page 33.



### VR150 Silensio™

- Ultra silent
- 40% longer lifespan
- Superior obstacle detection
- 'Soft start & stop' function
- Motor with frost protection
- Two speeds

# VR150 Solar

*Energy-  
saving*



## Use free energy

A Harol Solar roller shutter operates completely independently on solar energy and has an excellent performance, even in less than ideal weather circumstances.

Other strengths are:

- Ready to use: the charged battery runs immediately after installation
- Greater ease of use with the wireless, radio-controlled motor
- Heat and cold resistant: battery operates in temperatures from -20 °C to +70 °C
- Custom: choose from three types, depending on the desired motor strength
- Wireless: perfect for renovations, ideal for skylights
- Extra energy-savings: the roller shutter does not use any electricity



## Standard scratch protection

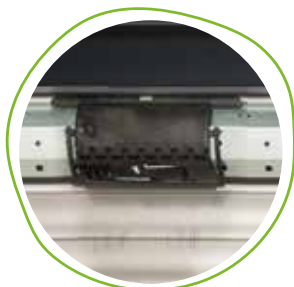
*Exclusively  
at Harol*

### Years of pleasure without any extra charges

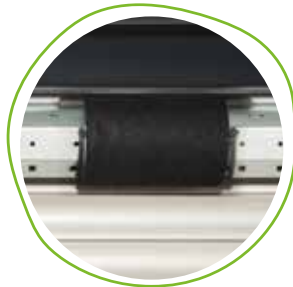
Harol does not require you to pay extra for scratch protection. All our roller shutters with flocked suspending springs\* now have standard protection against scratches. This is done by applying durable protective padding.

Why do we do this? The protective padding reduces the likelihood of scratches to a minimum. Result: your roller shutter will remain lustrous for longer. Continuous improvement is very important to Harol!

\* Padding applies to VR150, VR150 Silensio™; OB440, OB440 Silensio™; OB450, OB450 Silensio™.



Without protective  
padding



With protective  
padding

*Surface-mounted  
roller shutters*  
**HAROL®**



# Safety first!

## Security package

---

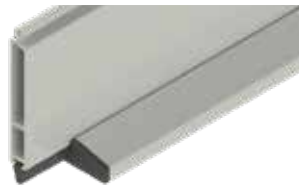
### Opt for additional security

Roller shutters are an additional deterrent to intruders attempting to break into your home. They contribute significantly towards the increased security of your property. Nowadays you can go one step further; certain components can be additionally safeguarded. A number of options are:

- **Lift security system:** the curtain is attached to the rod with shackles. These completely lock the shutter curtain, making it much harder to lift.
- **Extrusion box from extruded aluminium:** makes the shutter more rigid, thicker, stronger and more stable.
- **Safety guide rail:** thicker than a standard guide rail, making it harder to pull open the curtain.
- **Safety bottom lath:** fitted with an extra wide lip to make it difficult to grip.
- **Safety slat:** filled with an extremely hard foam to make the slat even more rigid.



EXTRUSION BOX



BOTTOM LATH + SAFETY FOOT



SAFETY GUIDE RAIL



ALU SLAT ALU42S



SUSPENDING SPRING  
WITH PADDING





*Surface-mounted  
roller shutters*  
**HAROL®**







Rosaly Bettens, Business Manager at Naturelle,  
opted for Harol roller shutters

“We can now  
turn down our  
heating in winter”







Women go to beauty salon Naturelle in the quiet town of Houthalen-Helchteren for skin beauty treatments, and now friendly business manager Rosaly talks at length about the many benefits of her roller shutters.

## Cosy in winter

“When we moved here, approximately eight years ago, we noticed that the temperature upstairs could become uncomfortably hot. Since we've had roller shutters installed, this is no longer the case.” After renovating the kitchen and the living room, we also had roller shutters installed at the back of the house. “In winter, we can now turn down our heating. This has resulted in significant savings, just by having roller shutters installed. Another pleasant fact: with the shutters down, we can now snuggle up, warm and cosy in the evenings. They shut out the light and give us our privacy.”

## One press of a button

Rosaly also finds it very convenient that the shutters can be operated using a tablet or smartphone. “We regularly leave our sash windows open. If I want to go and fetch the children, I don't need to close all the windows. By simply pressing a button I can roll down all the shutters. In no time at all the house is locked up and passers-by cannot peep inside.” Also for indoors this simple way of operating the blinds is extremely handy. “If the sun is shining on my TV screen, it's so simple to quickly do something about it.”

## Handy timer function

Rosaly has frequently experienced how her roller blinds have provided her with better sound insulation. “For example, I really do not like thunder and lightning, so when I roll down my shutters, I hardly notice anything. Also, every day jet planes pass by over our house. It always happens at three o'clock, just when my daughter Verolien is having a nap. It is a huge advantage that I can now do something about the noise. And in the evening, the shutters in her room roll down automatically, thanks to the timer function.”

*Rosaly XXX*

# Built-in roller shutters

Thinking of building or renovating? Tip: have built-in roller shutters fitted during the building work. This will immediately enhance the comfort in your home or office. It gives us the opportunity to integrate your built-in shutters seamlessly into the exterior wall: invisible when open, sleek-fitting when lowered. To fit the built-in shutters, space for the roller barrel is required above the window. An additional lift security system can be purchased for optimum protection.

→ *Sleek look,  
huge advantages*





More info:  
↳ [www.harol.com](http://www.harol.com)

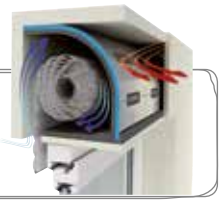
**HAROL®**



# IB and IB Silensio™

**TIP!**

Save energy through additional insulation.



## Exceptionally strong

Each component of this highly reliable roller shutter is designed for durability and smooth operation.

### Benefits

- Double-walled slats in PVC or aluminium
- Bottom lath made from extruded aluminium with seal
- Guide rails made from extruded aluminium
- Special side clamps to prevent the slats from sliding together



## Impressive colour palette

For the bottom lath and guide rails you can choose from all RAL colours (K-250 RAL range) for the standard price, with a wide range of contemporary colours in textured coating.



*Built-in roller shutters*  
**HAROL®**



**TIP!**

The roller shutter curtain is available with or without light and ventilation slots.  
This allows you to determine your personal atmosphere for the room.  
Please note: a roller shutter does not shut out 100% of the light.

## Slats provide an attractive look, with additional security and insulation

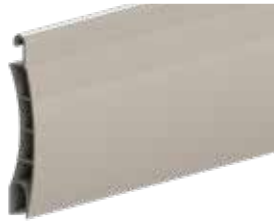
Concave or convex side to be outward-facing? You can choose whichever you prefer.

7.8 mm



PVC SLAT PVC37

9 mm



PVC SLAT MIDI

14.5 mm



PVC SLAT ISIROLL

8.85 mm



ALU SLAT ALU35

8.5 mm



ALU SLAT ALU37

9 mm



ALU SLAT ALU42

*Super secure!*

9 mm



ALU SLAT ALU42S

*Super-insulating!*

8.5 mm



ALU SLAT ALU42TH

*Super large!*

14 mm



ALU SLAT ALU55

9 mm = thickness of the slat



= max. area



### Slat colours

Available in a variety of fashionable colours.  
See page 33.

### IB Silensio™

- Ultra silent
  - 40% longer lifespan
  - Superior obstacle detection
  - 'Soft start & stop' function
  - Motor with frost protection
  - Two speeds
- See page 6.

# Built-on roller shutters

Are you planning on replacing your windows? Why not choose built-on roller shutters! Built-on roller shutters are fitted in the window frame and installed as a unit. A practical built-on system that guarantees a trouble-free installation for both renovations and new properties. But you won't discover the real benefits until after the installation. Built-on roller shutters are extremely windproof, for maximum comfort and insulation. Saving you hundreds of Euros per year! And thanks to the contemporary design and robust construction, built-on roller shutters go perfectly with wooden, PVC and aluminium windows. The special finishing profiles ensure the box is flush with the wall and the window frame.

→ *Highest insulation  
on the market!*

*Built-on roller shutters*  
**HAROL®**



More info:  
↳ [www.harol.com](http://www.harol.com)

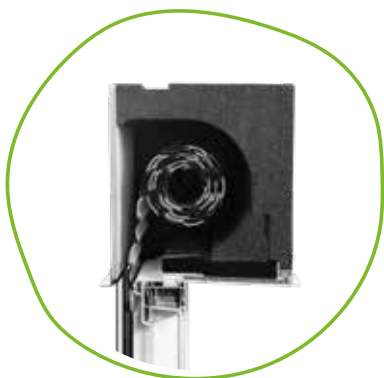
**HAROL®**

# OB900 Thermo, OB440, OB450 and OB900 Thermo, OB440, 450 Silensio™

## A box of the very best quality

The box of a Harol built-on roller shutter is a marvel of technical ingenuity. All components are perfectly matched and specially designed for a long life and maximum comfort. The box design is modern and can easily be customized to suit the style of your home. And because the box is composed of tightly clipped double-walled plastic profiles, it is extremely robust and offers excellent insulation.

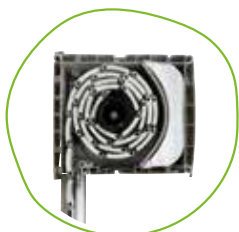
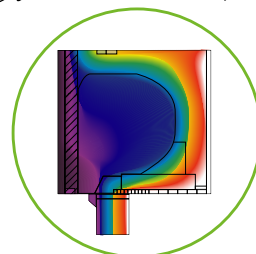
*Super-insulating!*



OB900 Thermo

### Benefits

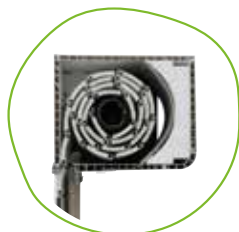
- Ideal for large renovations and new builds
- Suitable for low energy houses
- Easy to maintain
  - IR = Maintenance from the inside
  - ER = Maintenance from the outside
- Superior thermal insulation ( $U=0.43 \text{ W/m}^2\text{K}$ ) acoustic insulation: (45(0; -3)dB)
- Aesthetic solution: No visible box from within the home



OB440

### Benefits

- Double-walled plastic profiles
- Spherical cover
- Cover lip for easy opening of the box
- Thermally insulated
- Acoustic insulation available
- Finishing profile (also available for the sides) to seamlessly fit against the wall and window frame



OB450

### Benefits

- Double-walled plastic profiles
- Rounded cover, contemporary design
- Angled profile with adhesive strip for easy assembly



## Impressive colour palette

The box comes in a wide choice of colour foils to perfectly match your external joinery. The bottom lath and guide rails are available in all RAL colours (K-250 RAL range) for the standard price, with a wide range of contemporary colours in textured coating.

*Built-on roller shutters*  
**HAROL®**



**TIP!**

The roller shutter curtain is available with or without light and ventilation slots.  
This allows you to determine your personal atmosphere for the room.  
Please note: a roller shutter does not shut out 100% of the light.

## Slats provide an attractive look, with additional security and insulation

Concave or convex side to be outward-facing? You can choose whichever you prefer.



PVC SLAT PVC37



PVC SLAT MIDI



ALU SLAT ALU35

Suitable for OB900-Thermo



ALU SLAT ALU37

Suitable for OB900-Thermo



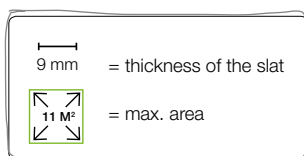
ALU SLAT ALU42

Suitable for OB900-Thermo

*Super-insulating!*



ALU SLAT ALU42TH



### Slat colours

Available in a variety of fashionable colours.  
See page 33.

### Additional scratch protection

See page 16.

*Exclusively at Harol!*



### OB440, OB450 Silensio™

- Ultra silent
  - 40% longer lifespan
  - Superior obstacle detection
  - 'Soft start & stop' function
  - Motor with frost protection
  - Two speeds
- See page 6.





*Built-in and built-on  
roller shutters*  
**HAROL®**







# A world of options and accessories

Your taste is very personal, which means your home or office has its own chosen style. Fortunately, Harol roller shutters can be fitted to reflect your personality and your property, thanks to the many accompanying options and accessories:

## *Opt for additional security*

- **Bolt:** placed in the bottom lath and only operable from the inside.
- **Cylinder lock:** placed in the bottom lath or intermediate slat and operated from the inside and outside.
- **Automatic lift security system:** located on the rod, locking the curtain automatically when fully lowered.

## *Opt for extra ease of use*



Bottom lath stops



Handgrips in the intermediate slat



Handgrips on the bottom lath



Orbits



# Slat colours

		PVC			ALUMINIUM					
		PVC37	MIDI	ISIROLL	ALU35	ALU37	ALU42	ALU42S	ALU42TH	ALU55
White		S	S	S	S	S	S	S	S	S
Grey		S	S	S	-	-	-	-	-	-
Light grey		-	-	-	S	S	S	S	-	S
Beige		S	S	S	-	O	O	-	-	O
Brown		-	-	-	S	S	S	S	S	S
Chestnut		S	S	S	-	-	-	-	-	-
Cream white		-	-	-	-	-	O	-	-	-
Alu-metallic		S	S	S	S	S	O	-	-	S
Bronze		-	-	-	S	S	S	S	-	S
Light beige		-	-	-	-	O	O	-	-	O
Moss green		-	-	-	S	S	S	S	-	S
Purple red		-	-	-	-	S	O	-	-	S
Terracotta		-	-	-	-	S	-	-	-	-
Terracotta		-	-	-	-	O	-	-	-	-
Black		-	-	-	-	-	O	-	-	O
Pine green		-	-	-	-	-	O	-	-	-
Grey aluminium		-	-	-	S	S	S	-	-	-
Soft grey		-	-	-	S	S	S	-	-	-
Grey metallic		-	-	-	-	-	-	-	-	-
Quartz gray		-	-	-	-	-	O	-	-	-
Steel blue		-	-	-	-	-	O	-	-	-
Black metallic		-	-	-	-	-	-	-	-	-
Black grey		-	-	-	-	-	O	-	-	-
Charcoal grey		-	-	-	S	S	S	-	S	S
Metallic charcoal grey		-	-	-	-	O	-	-	-	-
charcoal grey sablé		-	-	-	-	O	S	-	-	-
Black sablé		-	-	-	-	O	O	-	-	-
Grey sablé		-	-	-	-	O	O	-	-	-
Golden oak		-	-	-	O	O	O	O	-	O
Cream		-	-	-	S	S	S	-	S	S

Key O = optional / S = standard

# Harol: Your partner for perfect roller shutters

---

## 1. FITTED BY SPECIALISTS

All our solutions are installed by experts with many years of experience in the industry. Moreover, our dealers regularly attend courses at Harol to stay up-to-date with the latest installation techniques, maintenance and advice.

## 2. 100% GUARANTEED QUALITY

As a Belgian manufacturer with over 60 years of experience in the field, we ensure that our solutions meet the strictest quality requirements. Moreover, we offer a 5-year quality guarantee on all products.

## 3. CUSTOMIZED SOLUTIONS

All our solutions can be perfectly tailored to meet your needs:

- > You can choose from over 300 RAL colours and scratch-resistant textured coatings
- > Our products are suitable for new build and improvements/renovation

- > Extensive range of options to increase your comfort to a maximum

## 4. EASY TO OPERATE

All our solutions are available with motor and remote control. The roller shutters can be operated using different methods (manually or electrically) and they can be linked to an automatic control.

## 5. FULL SERVICE FROM START TO FINISH

Our dealers will assist you with advice and support:

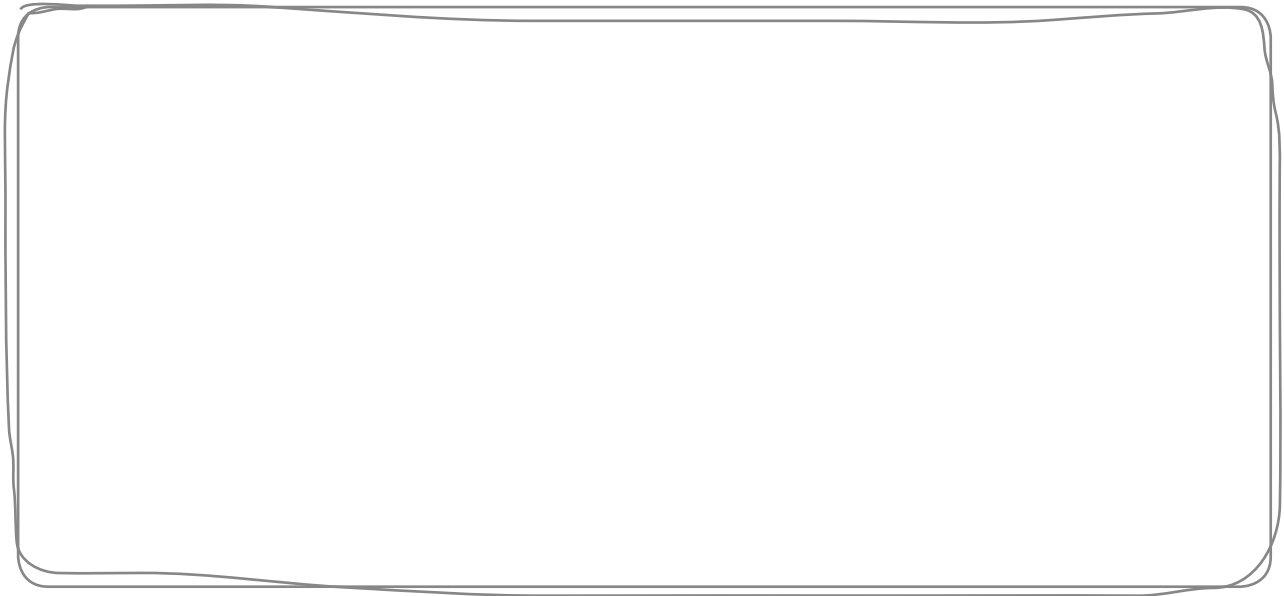
- > You can call on them for the correct advice, based on your needs and requirements
- > For questions about colours, materials and maintenance
- > After-sales service

*More info:*  
↳ [www.harol.com](http://www.harol.com)





*Your Harol Dealer:*



**HAROL®**



[www.harol.com](http://www.harol.com)