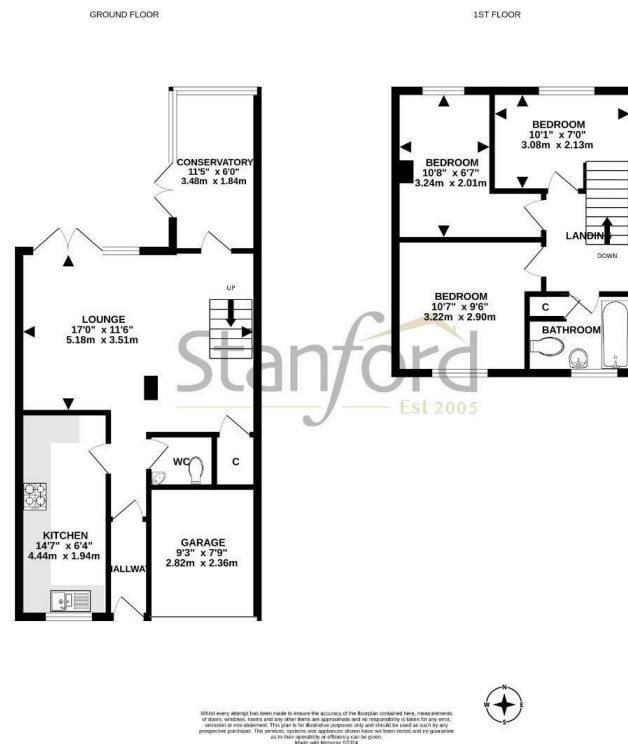




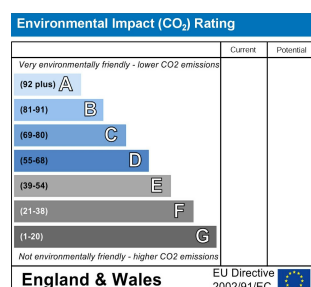
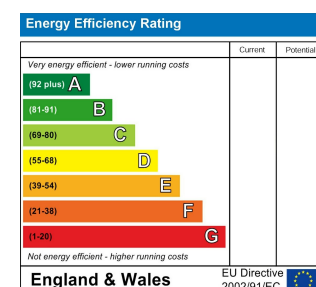
2 Olympic Way, Bishopstoke, SO50 8PP

Offers In Excess Of
£300,000

Stanford Estate Agents bring to the market with no forward chain this ideally located, three bedroom, end of terrace family home in a conveniently situated road in Bishopstoke. Benefitting from ample off road parking, ground floor WC facilities, conservatory and walking distance to Stoke Park Woods.



Tel: 023 8064 7272
Email: eastleigh@stanfordestateagents.co.uk
Address: 23High Street, Eastleigh, SO50 5LF



While we endeavour to make our sales particulars fair, accurate and reliable, they are only a general guide to the property and, accordingly, if there is any point which is of particular importance to you please contact the office and we will be pleased to check it for you, especially if you are contemplating travelling some distance to view the property. These approximate room sizes are only intended as general guidance. You must verify the dimensions carefully before ordering carpets or any built in furniture. Please note that we have not tested the services or any of the equipment or appliances in this property, accordingly we strongly advise prospective buyers to commission their own survey or service report before finalising their offer to purchase. These particulars are issued in good faith but do not constitute representations of fact or form part of any offer or contract. The matters referred to in these particulars should be independently verified by prospective buyers or tenants. Neither Stanfords nor any of its employees or agents has the authority to make or give any representation or warranty whatever in relation to this property. Your home is at risk if you do not keep up repayments on your mortgage or other loans secured on it. Written quotation are available on

